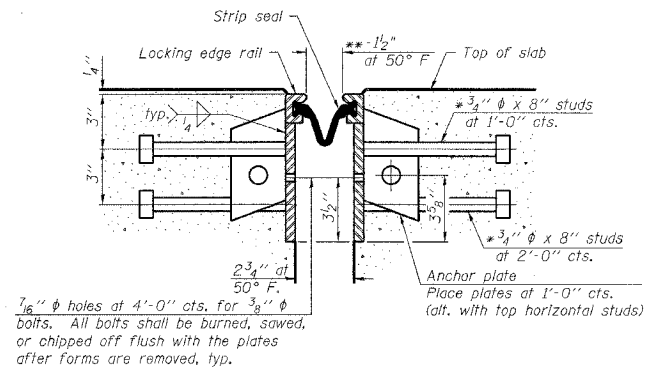
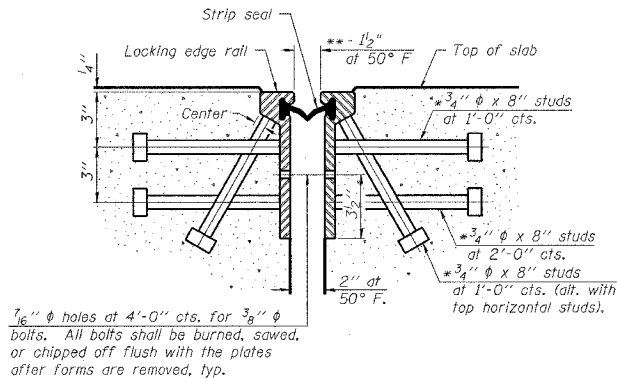


\* Granular or solid flux filled headed studs conforming to Article 1006.32 of the Std. Specs., automatically and welded.

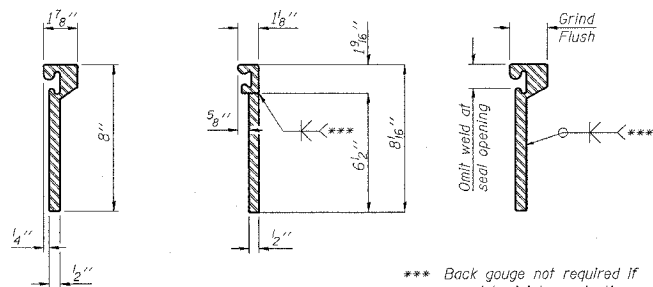
\*\* When joint is fixed, dimension is set at 1 1/2".



Notes:  
 The strip seal shall be made continuous and shall have a minimum thickness of 1/4". The configuration of the strip seal shall match the configuration of the Locking Edge Rails. Open or "webbed" strip seal gland configurations are not permitted. The gland shall be sized for a maximum rated movement of 4 inches. The height and thickness of the Locking Edge Rails shown are minimum dimensions. The actual configuration of the Locking Edge Rails and matching strip seal may vary from manufacturer to manufacturer. Flanged edge rails will not be allowed. Locking Edge Rails may be spliced at slope discontinuities and stage construction joints. The manufacturer's recommended installation methods shall be followed. The joint opening and deck dimensions detailed on the superstructure are based on a rolled rail expansion joint. If the Contractor elects to use the welded rail expansion joint, the opening and deck dimensions shall be modified according to the dimensions detailed on this sheet. Required modifications shall be made at no additional cost to the State. All steel components shall be galvanized after fabrication according to Article 520.03 of the Standard Specifications.

SECTION THRU ROLLED RAIL JOINT

SECTION THRU WELDED RAIL JOINT



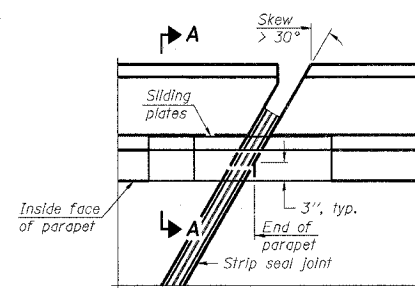
ROLLED (EXTRUDED) RAIL WELDED RAIL

\*\*\* Back gauge not required if complete joint penetration is verified by mock-up.

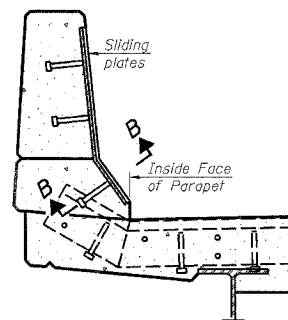
LOCKING EDGE RAIL SPLICE

The inside of the locking edge rail groove shall be free of weld residue.

LOCKING EDGE RAILS

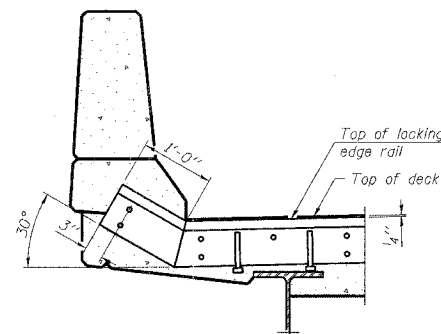


PLAN

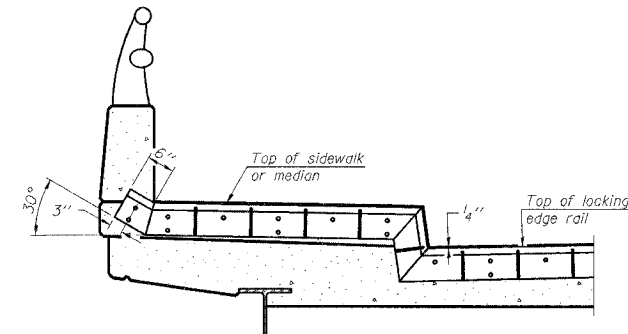


SECTION A-A

POINT BLOCK DETAILS (for skews > 30°)



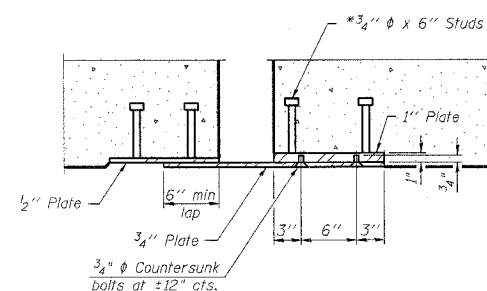
AT PARAPET



AT SIDEWALK OR MEDIAN

Shorter plates with a single row of studs at 12" cts. may be necessary on medians which are shallower than 9". See manufacturer's recommendation.

TYPICAL END TREATMENTS



SECTION B-B

BILL OF MATERIAL

SN	Item	Unit	Total
025-0030	Preformed Joint Strip Seal	Foot	72'

PREFORMED JOINT STRIP SEAL

EJ-SSJ

11-1-06

FILE NAME =	USER NAME = thoelek1	DESIGNED -	REVISED -	<b>STATE OF ILLINOIS DEPARTMENT OF TRANSPORTATION</b>	<b>PREFORMED JOINT STRIP SEAL SN 025-0030</b>	F.A.P. RTE.	SECTION	COUNTY	TOTAL SHEET NO.	
ci:\projects\74251d\karen\bridge.74251.dgn		DRAWN -	REVISED -			774	.	EFFINGHAM	33	116
PLOT SCALE = 20.0000' / IN.		CHECKED -	REVISED -			CONTRACT NO. 74251				
PLOT DATE = 3/27/2008		DATE -	REVISED -			SCALE:	SHEET NO. OF SHEETS	STA.	TO STA.	FED. ROAD DIST. NO.

SHEET NO. 6  
7 SHEETS