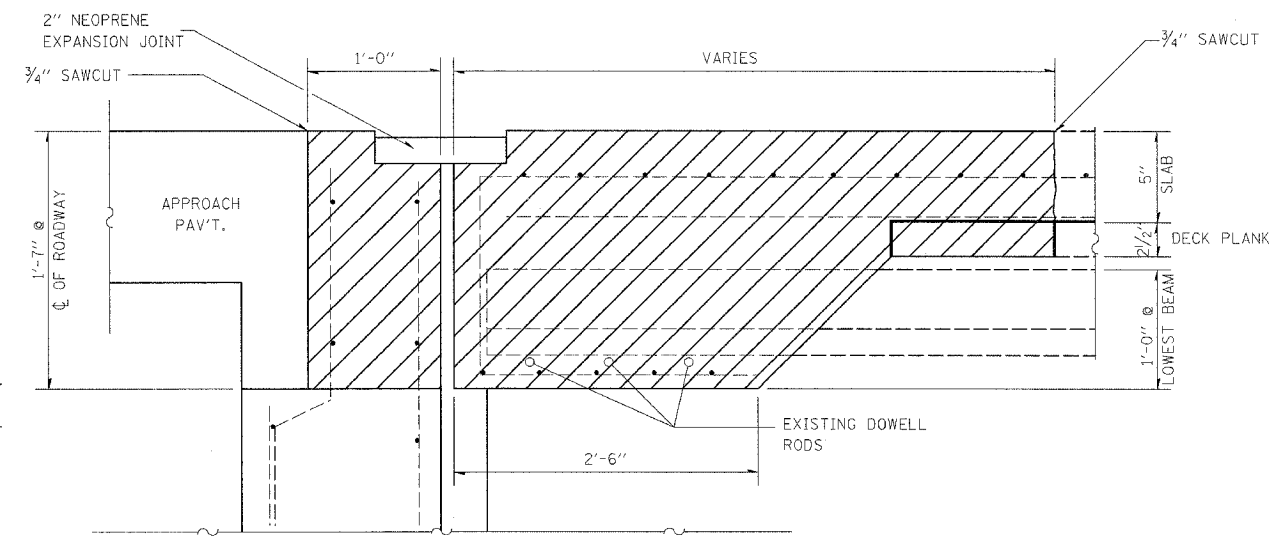
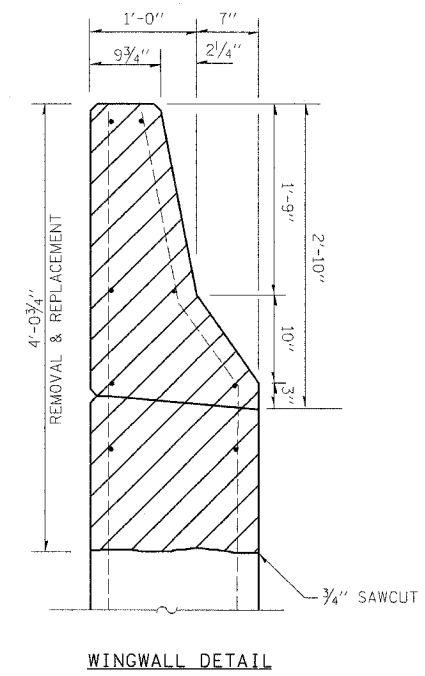


CONCRETE REMOVAL (LIMITS ARE FROM OUT TO OUT OF DECK)

Existing Precast Prestressed Plank (4'-0" x 6'-9")



NOTE: THE CONTRACTOR SHALL USE EXTREME CARE DURING CONCRETE REMOVAL SO AS NOT TO DAMAGE THE PPC I-BEAMS.

EXISTING EXPANSION JOINTS AT ABUTMENTS

FILE NAME = c:\projects\74275\ah\details_74275.dgn	USER NAME = seeslegk	DESIGNED -	REVISED -	STATE OF ILLINOIS DEPARTMENT OF TRANSPORTATION	058-0118 REMOVAL SOUTH EXPANSION JOINT	F.A.P. RTE.	SECTION	COUNTY	TOTAL SHEETS	SHEET NO.
	PLT SCALE = 28.0000 1 / IN.	DRAWN -	REVISED -			322 DT BRIDGE REPAIRS 2009-1	MACON	14	10	
	PLT DATE = 3/13/2008	CHECKED -	REVISED -			CONTRACT NO. 74275				
		DATE -	REVISED -			FED. ROAD DIST. NO.	ILLINOIS FED. AID PROJECT			