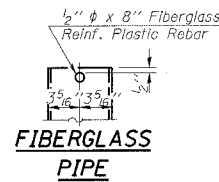
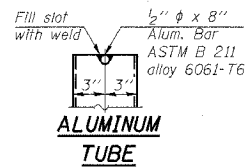


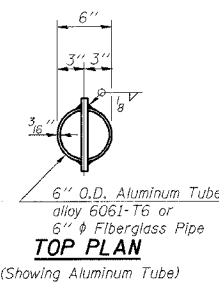
**SECTION B-B**  
\* Dimension as required by Pipe Clamp



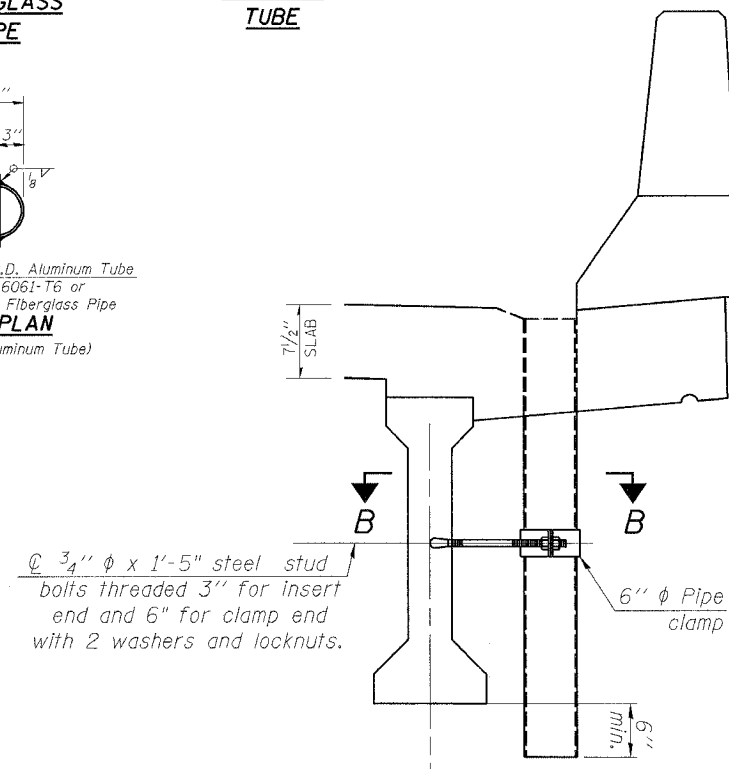
**FIBERGLASS PIPE**



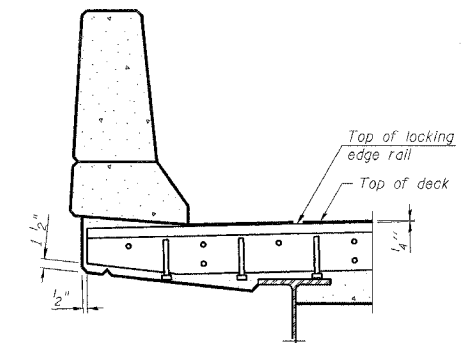
**ALUMINUM TUBE**



6" O.D. Aluminum Tube alloy 6061-T6 or 6"  $\phi$  Fiberglass Pipe  
**TOP PLAN**  
(Showing Aluminum Tube)



**DRAIN DETAIL AT PARAPET**



**STRIP SEAL JOINT ASSEMBLY AT SOFFIT**

Note: Extend Rubber Strip Seal 6" past outside edge of parapet.

FILE NAME = c:\projects\74275d\shdeta\is_74275.dgn	USER NAME = teasleyk	DESIGNED - DRAWN -	REVISED - REVISED -	<b>STATE OF ILLINOIS DEPARTMENT OF TRANSPORTATION</b>	<b>ADDITIONAL BRIDGE DETAILS</b>				F.A.P. RTE.	SECTION	COUNTY	TOTAL SHEETS	SHEET NO.	
PLOT SCALE = 20,000 <sup>00</sup> / IN.	CHECKED -	REVISED -	REVISED -		SCALE:	SHEET NO.	OF	SHEETS	STA.	TO STA.	322 DT BRIDGE REPAIRS 2009-1	MACON	14	12
PLOT DATE = 3/13/2009	DATE -	REVISED -	REVISED -								CONTRACT NO. 74275			
											FED. ROAD DIST. NO.	ILLINOIS FED. AID PROJECT		