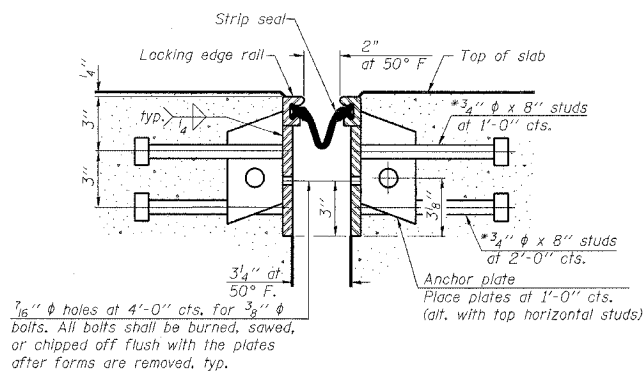
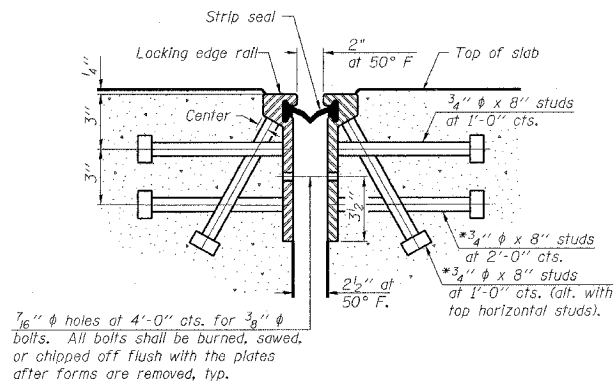


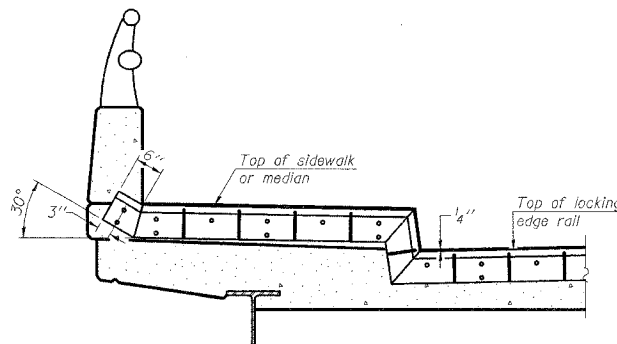
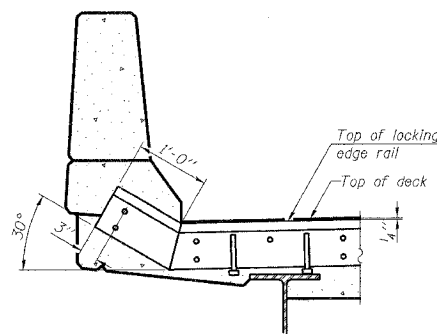
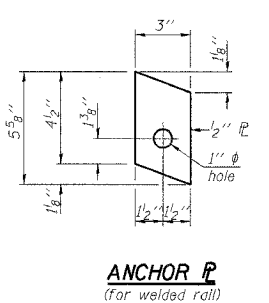
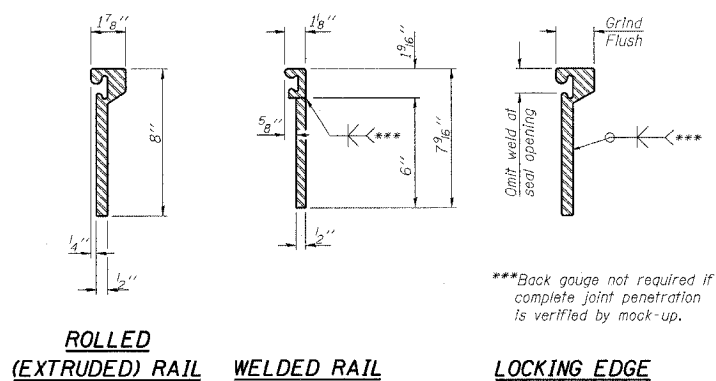
*Granular or solid flux filled headed studs conforming to Article 1006.32 of the Std. Specs., automatically end welded.



Notes:
 The strip seal shall be made continuous and shall have a minimum thickness of 1/4". The configuration of the strip seal shall match the configuration of the Locking Edge Rails. Open or "webbed" strip seal gland configurations are not permitted. The gland shall be sized for a maximum rated movement of 4 inches.
 The height and thickness of the Locking Edge Rails shown are minimum dimensions. The actual configuration of the Locking Edge Rails and matching strip seal may vary from manufacturer to manufacturer. Flanged edge rails will not be allowed. Locking Edge Rails may be spliced at slope discontinuities and stage construction joints.
 The manufacturer's recommended installation methods shall be followed.
 The joint opening and deck dimensions detailed on the superstructure are based on a rolled rail expansion joint. If the Contractor elects to use the welded rail expansion joint, the opening and deck dimensions shall be modified according to the dimensions detailed on this sheet. Required modifications shall be made at no additional cost to the State.
 All steel components shall be galvanized after fabrication according to Article 520.03 of the Standard Specifications.

SECTION THRU ROLLED RAIL JOINT

SECTION THRU WELDED RAIL JOINT

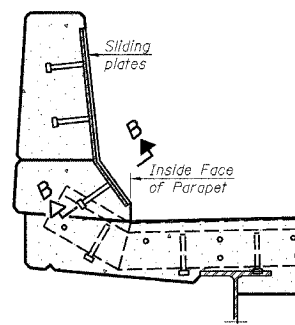
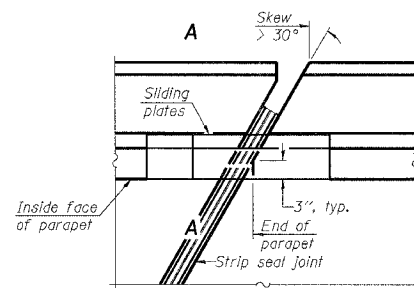


AT PARAPET
 FOR END TREATMENT SEE
 DETAIL ON SHEET 12 OF 14

AT SIDEWALK OR MEDIAN
 Shorter plates with a single row of studs at 12" cts. may be necessary on medians which are shallower than 9". See manufacturer's recommendation.

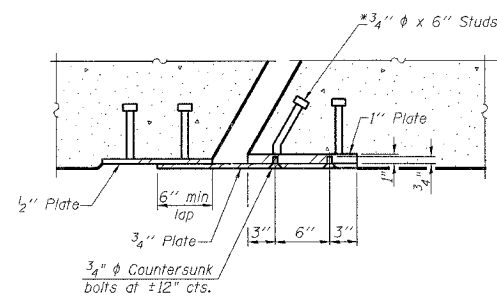
LOCKING EDGE RAIL SPLICE
 The inside of the locking edge rail groove shall be free of weld residue.

LOCKING EDGE RAILS



SECTION A-A
 POINT BLOCK DETAILS
 (for skews > 30°)

TYPICAL END TREATMENTS



BILL OF MATERIAL

Item	Unit	Total	
Preformed Joint Strip Seal	Foot	45	STR# 058-0117
Preformed Joint Strip Seal	Foot	45	STR# 058-0118

PREFORMED JOINT STRIP SEAL

EJ-SSJ 9-3-07

FILE NAME =	USER NAME = teasleyck	DESIGNED -	REVISED -	STATE OF ILLINOIS DEPARTMENT OF TRANSPORTATION	PREFORMED JOINT STRIP SEAL	F.A.P. RTE.	SECTION	COUNTY	TOTAL SHEETS	SHEET NO.
ca:\projects\74275\shhdetails.74275.dgn		DRAWN -	REVISED -			322 DT BRIDGE REPAIRS 2009-1	MACON	14	13	
PLOT SCALE = 20,0000' / IN.		CHECKED -	REVISED -			CONTRACT NO. 74275				
PLOT DATE = 3/13/2008		DATE -	REVISED -			FED. ROAD DIST. NO.	ILLINOIS FED. AID PROJECT			
SCALE:						SHEET NO.	OF SHEETS	STA.	TO STA.	