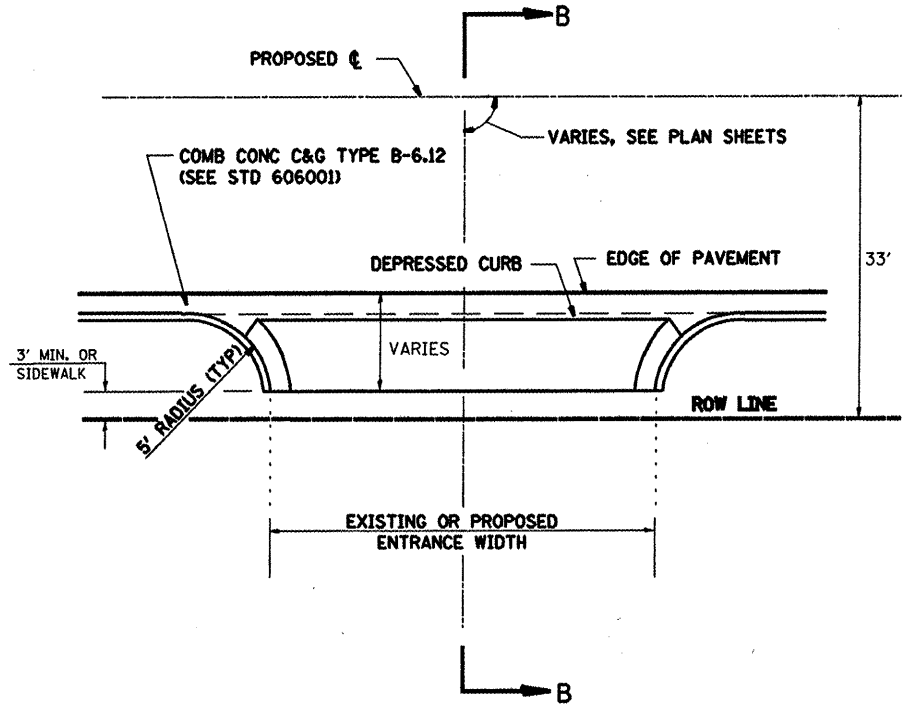


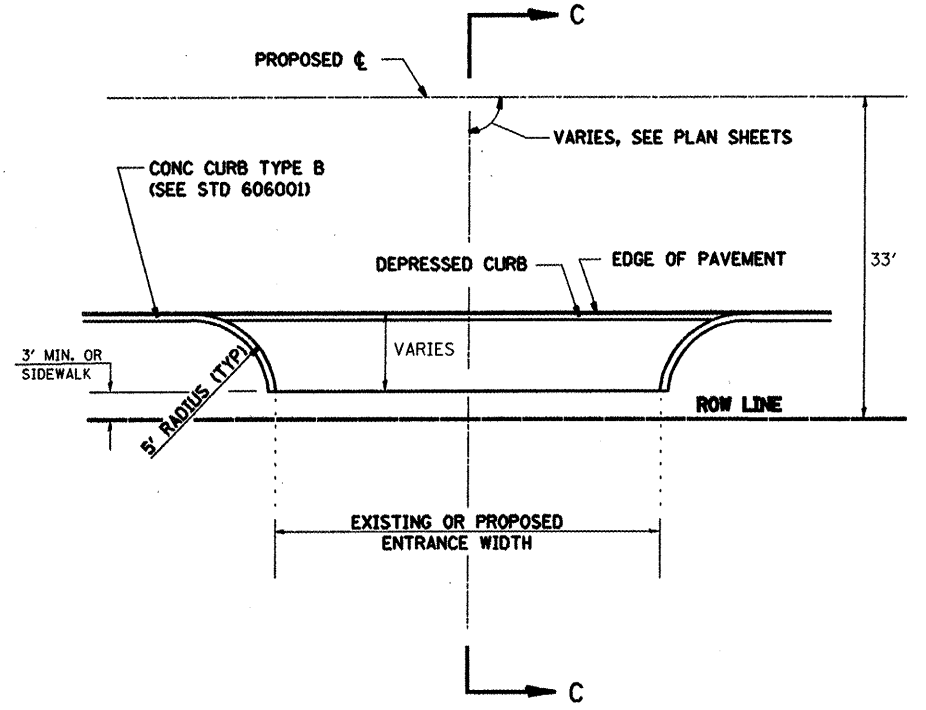
ENTRANCE DETAIL A

PCC ENTRANCE ADJACENT TO ROADWAY PAVEMENT WITH COMBINATION CONCRETE CURB & GUTTER TYPE B-6.12



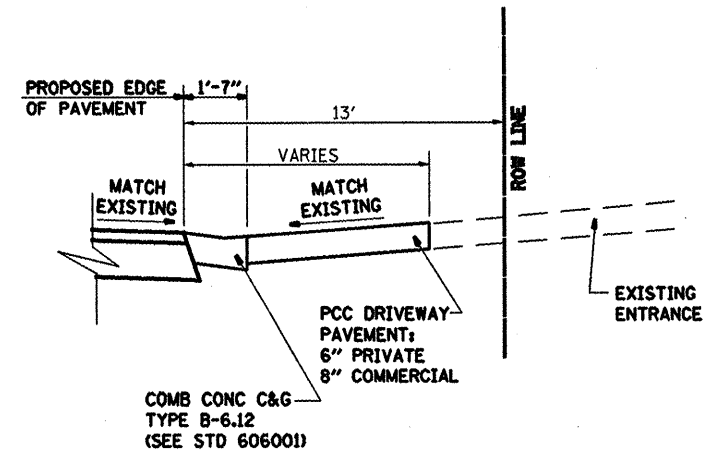
ENTRANCE DETAIL B

HMA ENTRANCE ADJACENT TO ROADWAY PAVEMENT WITH COMBINATION CONCRETE CURB & GUTTER TYPE B-6.12

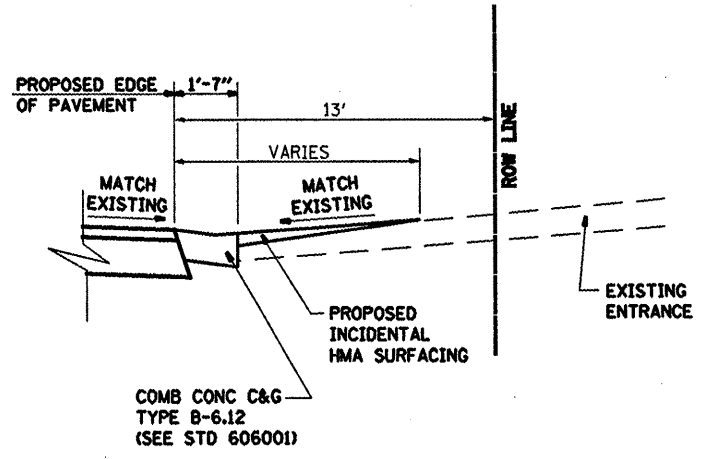


ENTRANCE DETAIL C

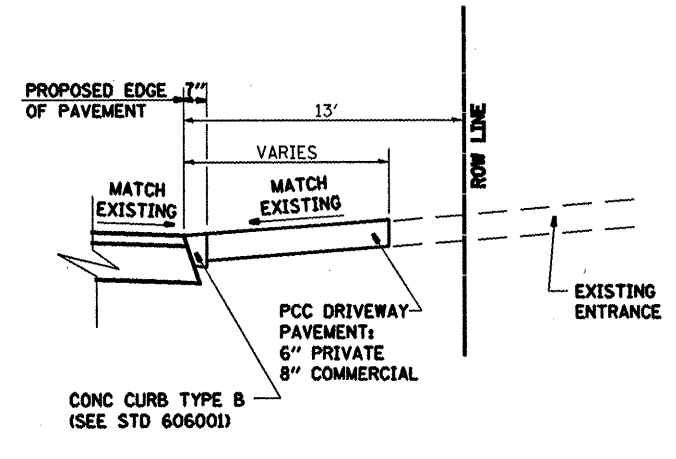
PCC ENTRANCE ADJACENT TO ROADWAY PAVEMENT WITH CONCRETE CURB TYPE B



SECTION A-A



SECTION B-B



SECTION C-C

FILE NAME = #FILE#	USER NAME = #USER#	DESIGNED -	REVISED -
		DRAWN -	REVISED -
	PLOT SCALE = #SCALE#	CHECKED -	REVISED -
	PLOT DATE = #DATE#	DATE -	REVISED -

STATE OF ILLINOIS
DEPARTMENT OF TRANSPORTATION

RESURFACING, ENTRANCE & SIDEROAD DETAILS

SCALE: SHEET NO. OF SHEETS STA. TO STA.

F.A.U. RTE. 9128	SECTION 38-IRS-3	COUNTY MADISON	TOTAL SHEETS 33	SHEET NO. 9
FED. ROAD DIST. NO. (ILLINOIS) FED. AID PROJECT			CONTRACT NO. 76A85	