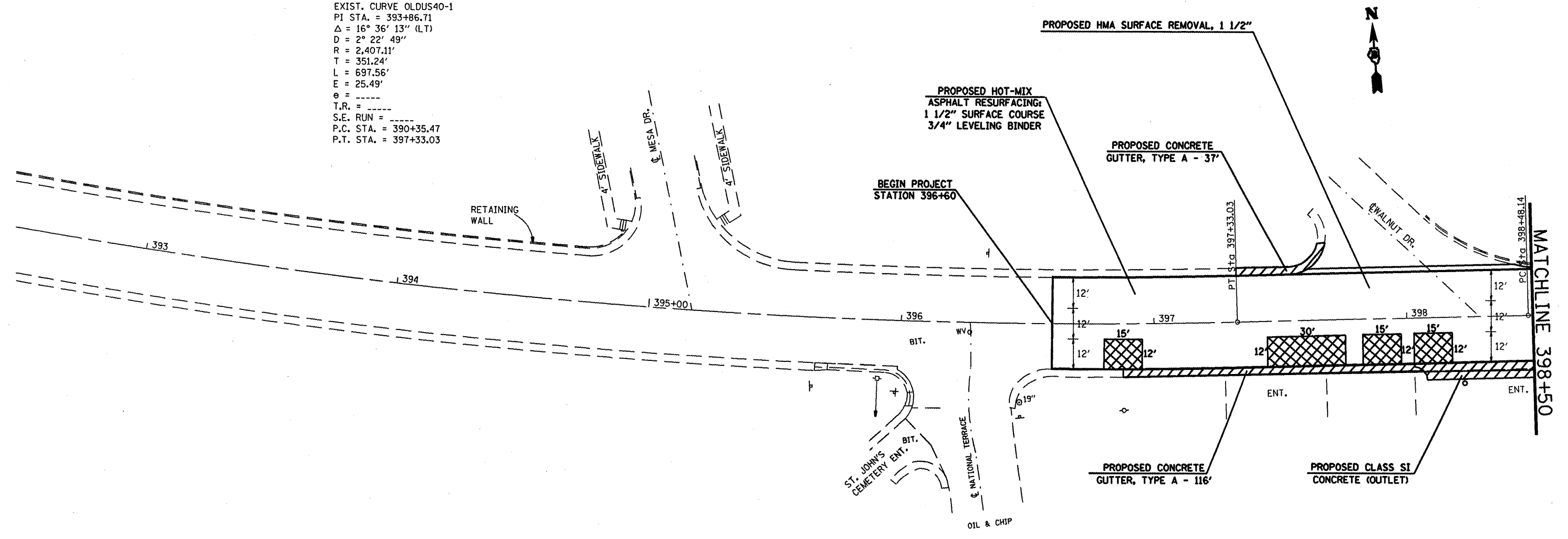


EXIST. CURVE OLDUS40-1  
 PI STA. = 393+86.71  
 $\Delta = 16^\circ 36' 13''$  (LT)  
 $D = 2^\circ 22' 49''$   
 $R = 2,407.11'$   
 $T = 351.24'$   
 $L = 697.56'$   
 $E = 25.49'$   
 $\theta = \text{-----}$   
 $T.R. = \text{-----}$   
 $S.E. \text{ RUN} = \text{-----}$   
 $P.C. \text{ STA.} = 390+35.47$   
 $P.T. \text{ STA.} = 397+33.03$





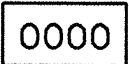
**NOTES:**

THE PROPOSED CONCRETE CURB AND/OR GUTTER REPLACEMENT QUANTITIES AND LOCATIONS SHOWN IN THE PLANS ARE FOR ESTIMATING PURPOSES ONLY. THE RESIDENT ENGINEER SHALL DETERMINE THE EXACT LOCATIONS AND LENGTHS OF IMPROVEMENT.

THE PROPOSED CURBS ARE SHOWN WIDER THAN ACTUAL SCALE.

THE MAXIMUM THICKNESS OF AGGREGATE SURFACE COURSE, TYPE B, AND INCIDENTAL HOT-MIX ASPHALT SURFACING, IF NOT SHOWN OTHERWISE, SHALL BE 2" WITH VARIATIONS AS DETERMINED NECESSARY BY THE RESIDENT ENGINEER.

ALL CONSTRUCTION ACTIVITIES SHALL BE CONFINED TO WITHIN 10' FROM THE BACK OF THE CURB FROM STATION 396+60 TO STATION 420+27 AND TO WITHIN 13' FROM THE BACK OF THE CURB FROM STATION 420+27 TO STATION 454+60.

-  PROPOSED CONCRETE CURB AND/OR GUTTER REMOVAL AND REPLACEMENT, DRIVEWAY PAVEMENT REMOVAL, OR SIDEWALK REMOVAL
-  PROPOSED PAVEMENT PATCHING, 12"
-  PROPERTY STREET NUMBER - APPROXIMATE LOCATION

FILE NAME =	USER NAME = #USER#	DESIGNED -	REVISED -
#FILE#		DRAWN -	REVISED -
	PLOT SCALE = #SCALE#	CHECKED -	REVISED -
	PLOT DATE = #DATE#	DATE -	REVISED -

STATE OF ILLINOIS  
 DEPARTMENT OF TRANSPORTATION

PLAN VIEW

SCALE: SHEET NO. OF SHEETS STA. 396+60 TO STA. 398+50

F.A.I. RTE.	SECTION	COUNTY	TOTAL SHEETS	SHEET NO.
9128	38-IRS-3	MADISON	33	10
FED. ROAD DIST. NO. ILLINOIS FED. AID PROJECT			CONTRACT NO. 76A85	