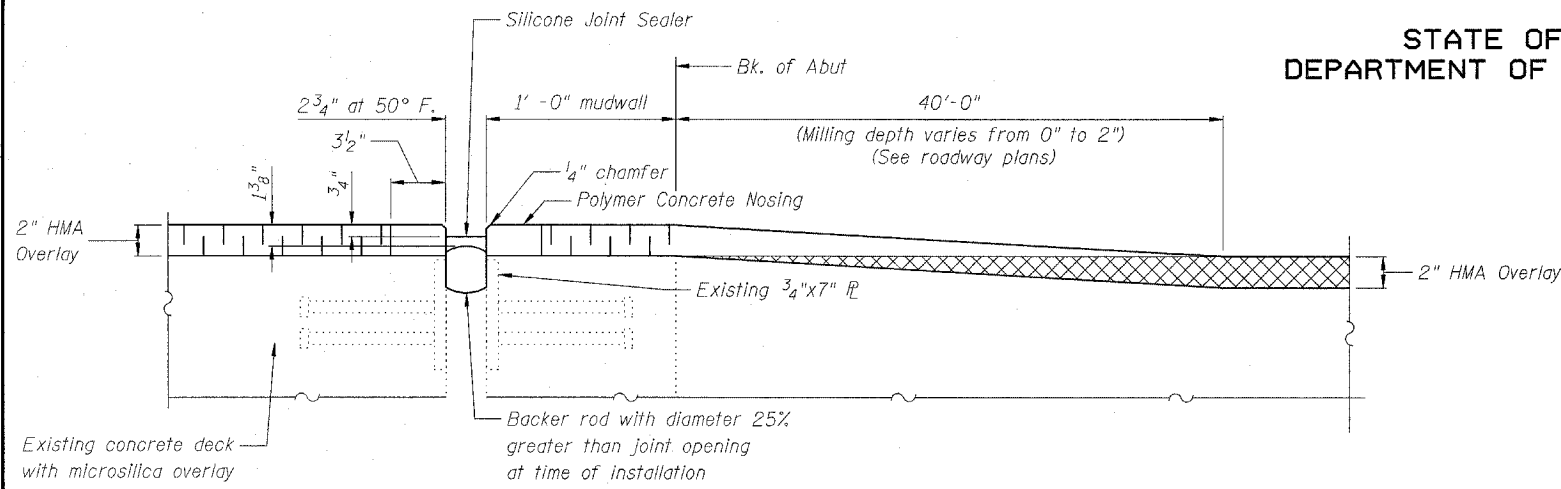


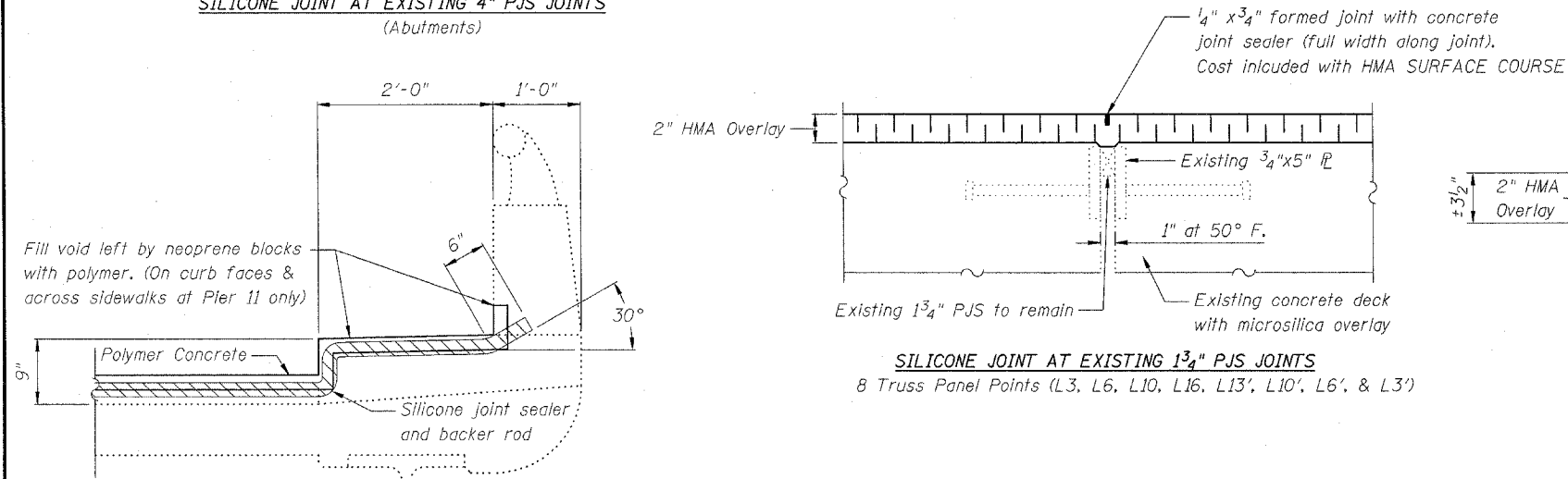
STATE OF ILLINOIS
DEPARTMENT OF TRANSPORTATION

ROUTE NO.	SECTION	COUNTY	TOTAL SHEETS	SHEET NO.
FAI 270	*	MADISON		193A
FED. ROAD DIST. NO. 7	ILLINOIS	FED. AID PROJECT		193 SHEETS

* 60-(1,2,3,4)RS-2
Contract # 76A90

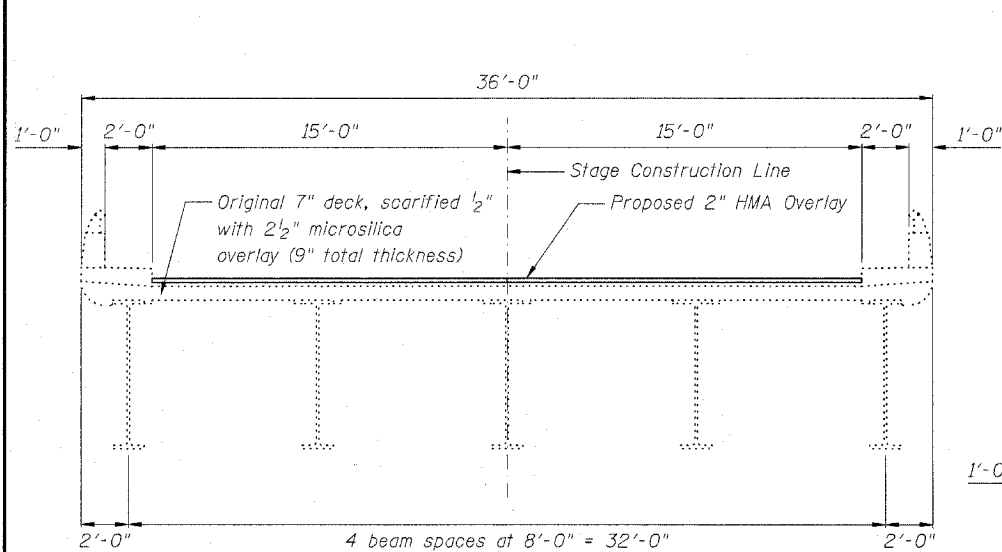


SILICONE JOINT AT EXISTING 4" PJS JOINTS
(Abutments)



SILICONE JOINT AT EXISTING 1 3/4" PJS JOINTS
8 Truss Panel Points (L3, L6, L10, L16, L13', L10', L6', & L3')

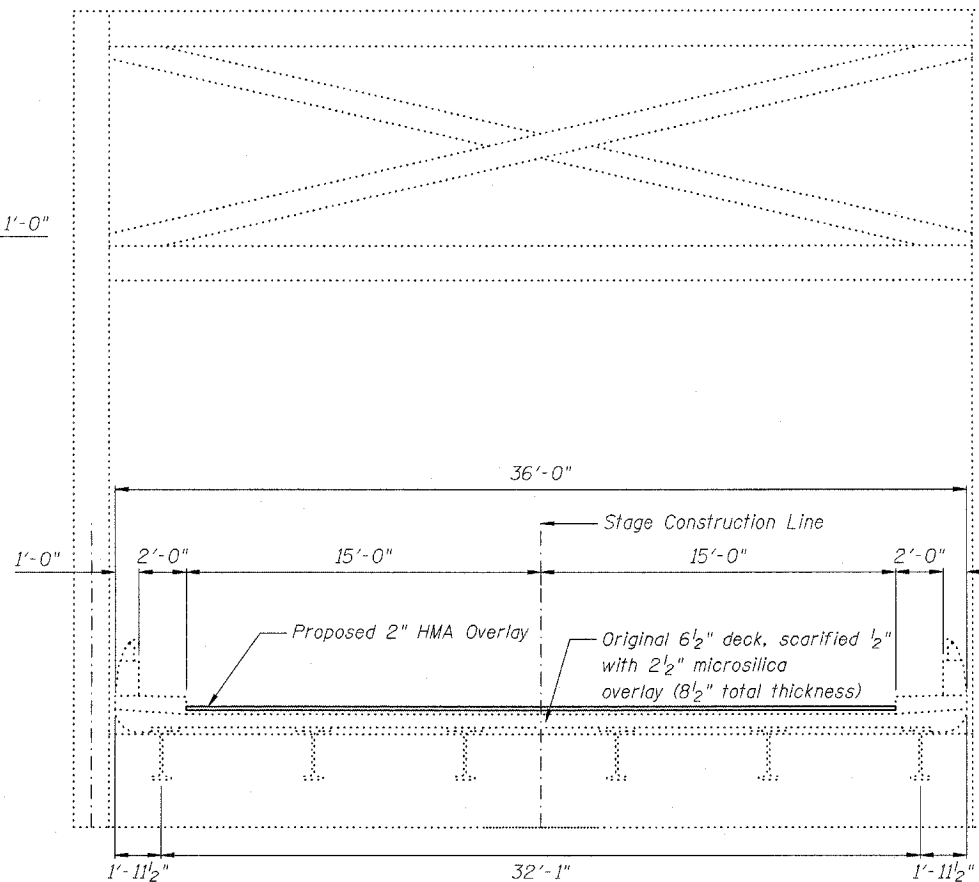
SILICONE END TREATMENT AT CURBS



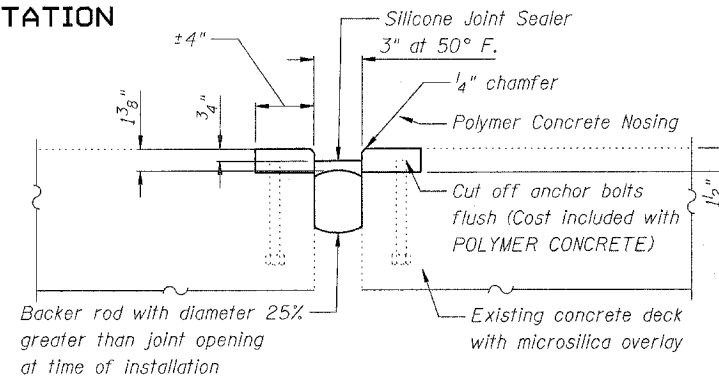
Cross Section (Spans 1-4 & 8-12)

DESIGNED	JAU
CHECKED	BJW
DRAWN	JAU
CHECKED	BJW

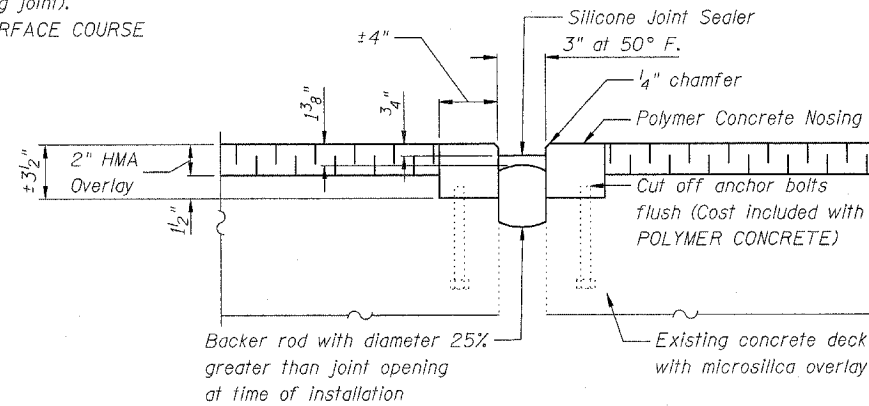
EXAMINED	200
PASSED	ENGINEER OF BRIDGE DESIGN
	ENGINEER OF BRIDGES AND STRUCTURES



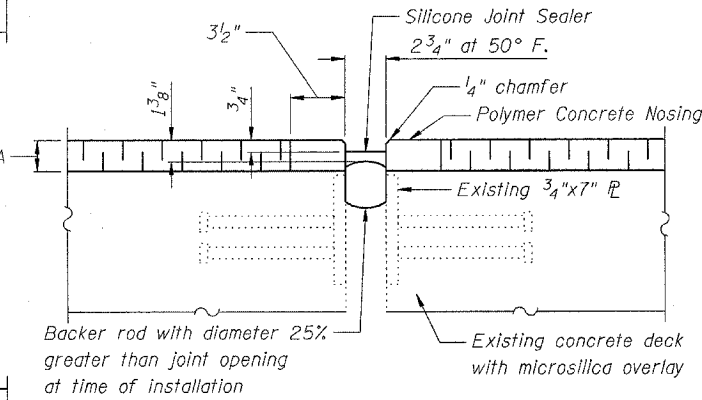
Cross Section (Truss Spans 5-7)



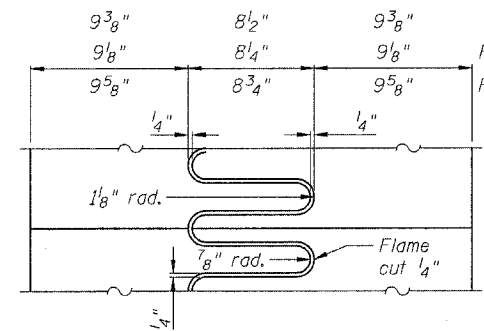
SILICONE JOINT AT EXISTING NEOPRENE JOINTS
(Pier 11 - on curb faces & across 2' sidewalk)



SILICONE JOINT AT EXISTING NEOPRENE JOINTS
(Pier 11 - along 30' deck)



SILICONE JOINT AT EXISTING 4" PJS JOINTS
(Pier 1)



FLAME CUTTING DIAGRAM

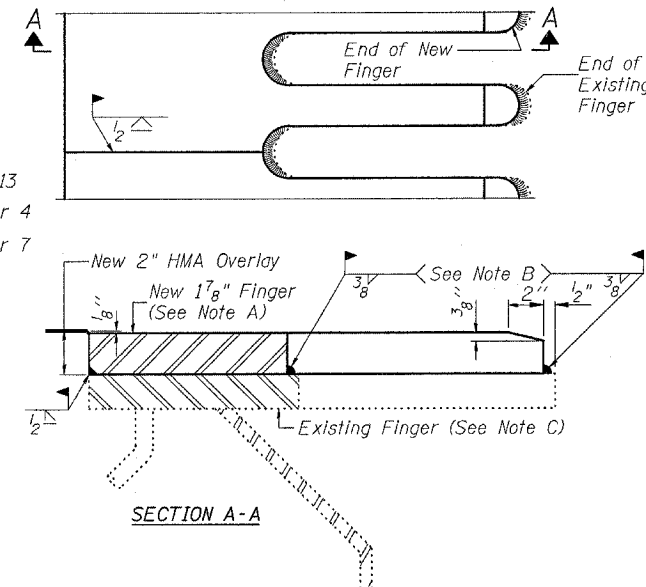
Cut from 1 7/8" x 27 1/4" x 29'-11 1/2" PL (L13)
Cut from 1 7/8" x 26 1/2" x 29'-11 1/2" PL (Pier 4)
Cut from 1 7/8" x 28" x 29'-11 1/2" PL (Pier 7)

See sheet 7 for existing finger plate dimensions.

Note A: New Finger shall be blast cleaned to SSPC SP 10 & shop painted with the inorganic zinc rich primer.

Note B: Fillet weld sizes at ends (tips) and crotches of fingers shall vary from 3/8" near centers to 3/16" minimum near edges as new and existing plates converge.

Note C: Existing Finger widths and exact locations must be field verified. A template shall be made to insure alignment. Remove foreign material that would prevent uniform contact between new and existing plates by method approved by the Engineer.



SECTION A-A

7/8" FINGER FILL PLATE DETAIL
(Pier 4, Pier 7, Panel Point L13)

DECK CROSS SECTION & DETAILS
I-270 OVER CHAIN OF ROCKS CANAL
FAI 270 SEC 60-(1,2,3,4)RS-2
MADISON COUNTY
STATION 200+46.53
STRUCTURE NO. 060-0036 & 0037