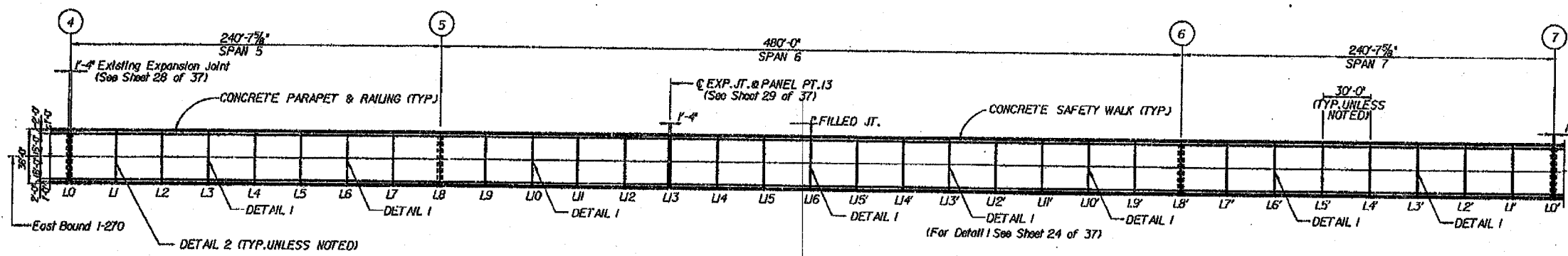


ROUTE No.	SECTION	COUNTY	TOTAL SHEETS	SHEET NO.
FA-270		MADISON	443	193
STA.	TO STA.			
F.H.W.A. REGION	ALANDS	PROJECT		
60-1B-1-3		SHT. 23 OF 37		

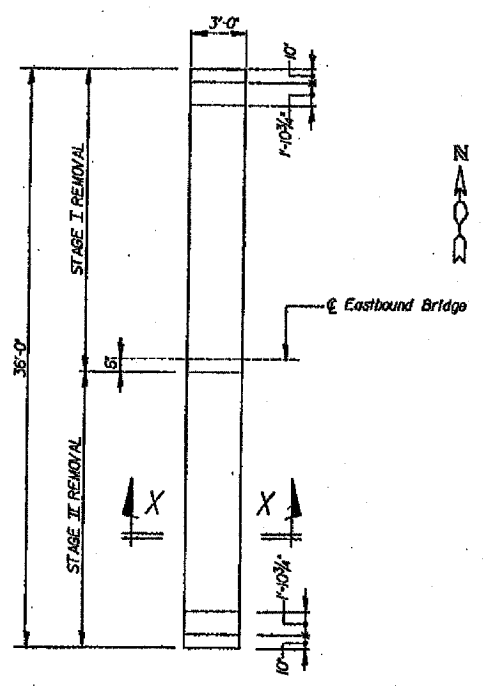
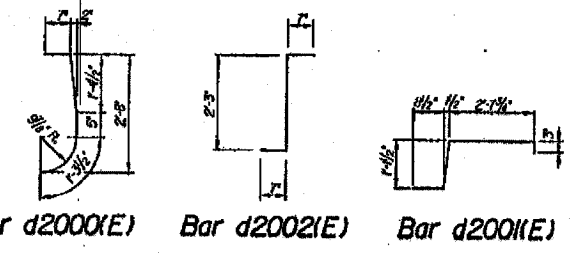


DECK PLAN: SPANS 5, 6 & 7
SCALE: 1"=40'-0"

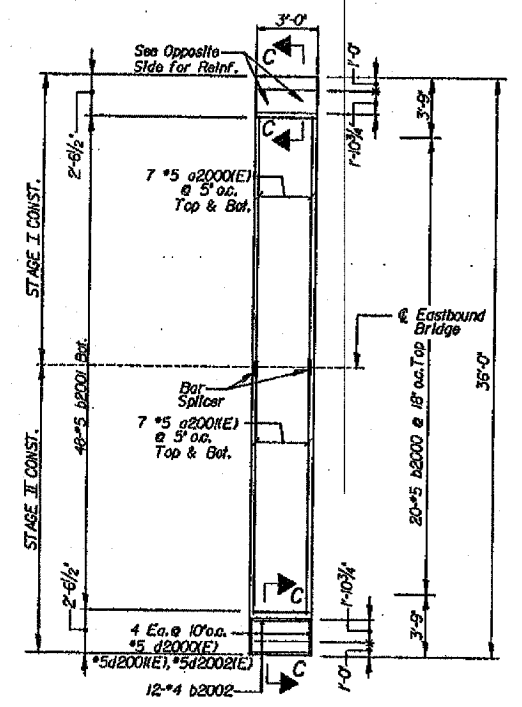
BILL OF MATERIAL

BAR	NO.	SIZE	LENGTH	SHAPE
d2000(E)	308	#5	1'-0"	—
d2001(E)	308	#5	1'-0"	—
b2000	440	#5	2'-10"	—
b2001	1056	#5	2'-10"	—
b2002	528	#4	2'-10"	—
d2000(E)	176	#5	3'-8"	⌋
d2001(E)	176	#5	4'-8"	⌋
d2002(E)	176	#5	3'-5"	⌋
REINFORCEMENT BARS, EPOXY COATED	LBS	13,100		
REINFORCEMENT BARS	LBS	5,420		
CONCRETE SUPERSTRUCTURE	CU YDS	69		
BAR SPLICERS	EACH	308		
CONCRETE REMOVAL	CU YDS	69		
MECHANICAL SPLICE	EACH	4,048		

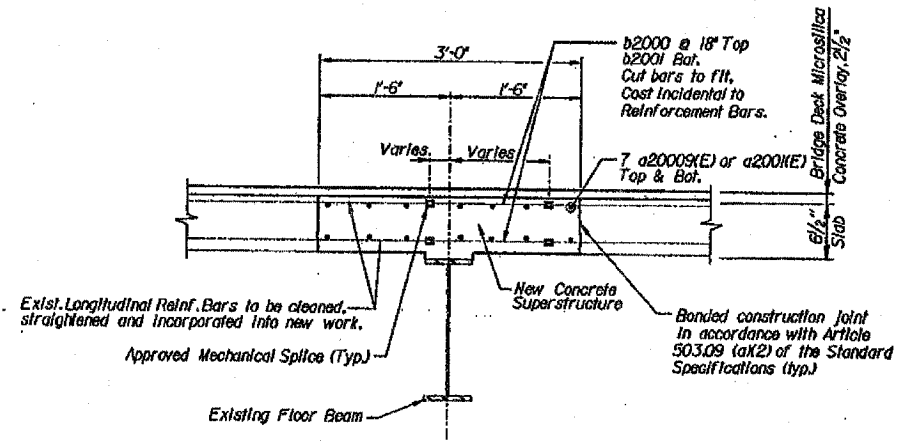
NOTE:
Contractor shall verify existing dimensions in field and make necessary adjustments prior to construction or ordering materials.



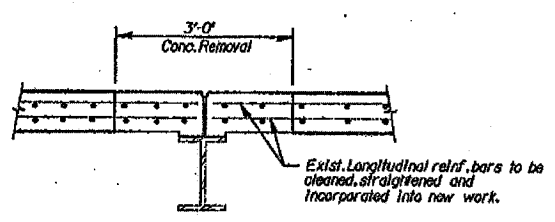
PLAN - CONCRETE REMOVAL



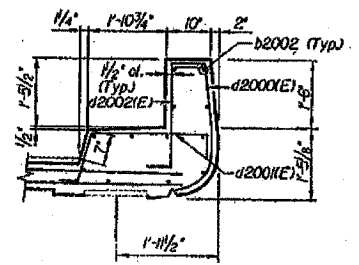
CONCRETE DECK REINFORCEMENT



DETAIL 2
(Spans 5 to 7)
22 Locations



SECTION X-X



SECTION C-C

FOR INFORMATION ONLY

ILLINOIS DEPARTMENT OF TRANSPORTATION
EXPANSION JOINTS: CANAL BRIDGE SPANS 5 THRU 7
FA-270 OVER THE CHAIN OF ROCKS CANAL
EASTBOUND BRIDGE REPAIR
SECTION 60-1B-1-3
MADISON COUNTY
STRUCTURE NUMBER 060-0036

DESIGNED	JN
CHECKED	DM
DRAWN	CD
CHECKED	JN

alfred benesch & company
CONSULTING ENGINEERS
265 NORTH MICHIGAN AVENUE, CHICAGO, ILLINOIS 60601
JOB NO. 3011

DATE 1995