

F.A.U. RTE.	SECTION	COUNTY	TOTAL SHEETS	SHEET NO.
9111	73-15TS	MADISON	64	1
FED. ROAD DIST. NO.	ILLINOIS	CONTRACT NO. 76B22		

64+4=68

D-98-097-07

STATE OF ILLINOIS
DEPARTMENT OF TRANSPORTATION
DIVISION OF HIGHWAYS

**PROPOSED
HIGHWAY PLANS**

FAU ROUTE 9111
(HORSESHOE LAKE RD)
SECTION 73-15TS
PROJECT: *ACHSIP-ACM-9111(001)*
MADISON COUNTY
C-98-101-07



STATE OF ILLINOIS
DEPARTMENT OF TRANSPORTATION
DIVISION OF HIGHWAYS

SUBMITTED *March 18, 2008*

Man C. Janni
DEPUTY DIRECTOR OF HIGHWAYS, REGION ENGINEER

May 9, 2008
Eric E. Horn
ENGINEER OF DESIGN AND ENVIRONMENT

May 9, 2008
Christie M. Reed
DIRECTOR OF HIGHWAYS, CHIEF ENGINEER

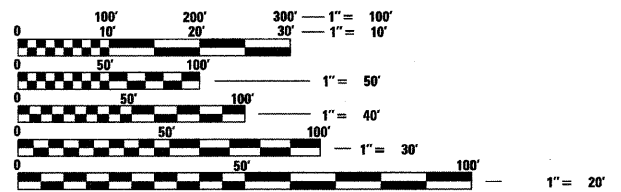
**PRINTED BY THE AUTHORITY
OF THE STATE OF ILLINOIS**

INDEX OF SHEETS

- 1 COVER SHEET
- 2 GENERAL NOTES AND COMMITMENTS
- 3 SUMMARY OF QUANTITIES
- 4-9 TYPICAL SECTIONS
- 10-11 SCHEDULES
- 12 ALIGNMENT AND TIES
- 13-16 PLAN AND PROFILE SHEETS
- 17-20 SUGGESTED STAGING SHEETS
- 21-25 STORM WATER POLLUTION PREVENTION PLAN SHEETS
- 26-28 DRAINAGE PLAN SHEETS
- 29-30 INTERSECTION DETAIL SHEETS
- 31-34 PAVEMENT MARKING PLANS & DETAILS
- 35-43 TRAFFIC SIGNALS SHEETS
- 44-46 SIGNING SHEETS
- 47 DETAILS
- 48 CULVERT SECTION FOURNE LANE
- 49 CULVERT SECTION EASTPORT PLAZA DRIVE
- 50-54 STORM SEWER SECTIONS HORSESHOE LAKE ROAD
- 55-64 CROSS SECTION HORSESHOE LAKE ROAD

HIGHWAY STANDARDS:

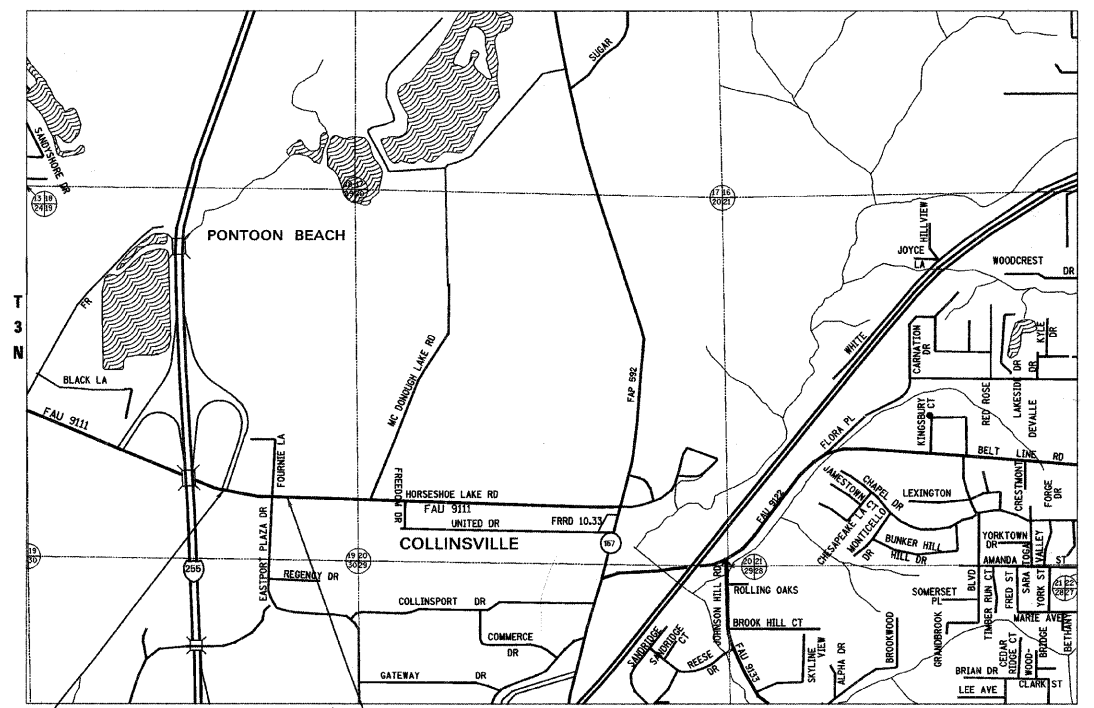
- 000001-05 STANDARDS SYMBOLS, ABBREVIATIONS AND PATTERNS
- 280001-04 TEMPORARY EROSION CONTROL SYSTEMS
- 442201-03 CLASS C AND D PATCHES
- 482006-03 HMA SHOULDER ADJACENT TO RIGID PAVEMENT
- 542301-01 PRECAST REINFORCED CONCRETE FLARED END SECTION
- 542401 METAL END SECTION FOR PIPE CULVERTS
- 542406 METAL END SECTIONS FOR PIPE ARCHES
- 601001-02 SUBSURFACE DRAINS
- 601101 CONCRETE HEADWALL FOR PIPE DRAIN
- 602301-01 INLET, TYPE A
- 604061-01 FRAME AND GRATE, TYPE 12
- 606001-03 CONCRETE CURB, TYPE B AND COMBINATION CONCRETE CURB AND GUTTER
- 606301-03 PC CONCRETE ISLANDS AND MEDIANS
- 665001-01 WOVEN WIRE FENCE
- 701001-01 OFF ROAD OPERATIONS, 2L, 2W, MORE THAN 4.5 m (15') AWAY > 45 MPH
- 701006-02 OFF ROAD OPERATIONS, 2L, 2W, 4.5 m (15') TO 600 mm (24") FROM PAVEMENT EDGE > 45 MPH
- 701011-01 OFF ROAD MOVING OPERATIONS, 2L, 2W, DAY ONLY > 45MPH
- 701201-02 LANE CLOSURE, 2L, 2W - DAY ONLY FOR SPEEDS > 45 MPH
- 701301-02 LANE CLOSURE, 2L, 2W - SHORT TIME OPERATIONS
- 701306-01 LANE CLOSURE, 2L, 2W - SLOW MOVING OPERATIONS DAY ONLY, FOR SPEEDS > 45 MPH
- 701311-02 LANE CLOSURE, 2L, 2W - MOVING OPERATIONS DAY ONLY
- 701326-02 LANE CLOSURE, 2L, 2W - PAVEMENT WIDENING FOR SPEEDS > 45 MPH
- 701336-04 LANE CLOSURE, 2L, 2W, WORK AREAS IN SERIES FOR SPEEDS > 45 MPH
- 701701-05 URBAN LANE CLOSURE, MULTILANE INTERSECTION
- 701901 TRAFFIC CONTROL DEVICES
- 720001 SIGN PANEL MOUNTING DETAILS
- 720006-01 SIGN PANEL ERECTION DETAILS
- 720011 METAL POSTS FOR SIGNS, MARKERS, & DELINEATORS
- 720021-01 SIGN PANELS EXTRUDED ALUMINUM TYPE
- 780001-01 TYPICAL PAVEMENT MARKINGS
- 781001-02 TYPICAL APPLICATIONS RAISED REFLECTIVE PAVEMENT MARKERS
- 805001 ELECTRIC SERVICE INSTALLATION DETAILS
- 814001-01 HANDHOLES
- 814006-01 DOUBLE HANDHOLES
- 857001-06 STANDARD PHASE DESIGNATION DIAGRAMS AND PHASE SEQUENCES
- 873001-01 TRAFFIC SIGNAL GROUNDING & BONDING
- 877001-03 STEEL MAST ARM ASSEMBLY AND POLE 16" THROUGH 55"
- 878001-06 CONCRETE FOUNDATION DETAILS
- 880006 TRAFFIC SIGNAL MOUNTING DETAILS
- 886001 DETECTOR LOOP INSTALLATIONS
- 886006 TYPICAL LAYOUT FOR DETECTION LOOPS



FULL SIZE PLANS HAVE BEEN PREPARED USING STANDARD ENGINEERING SCALES. REDUCED SIZED PLANS WILL NOT CONFORM TO STANDARD SCALES. IN MAKING MEASUREMENTS ON REDUCED PLANS, THE ABOVE SCALES MAY BE USED.

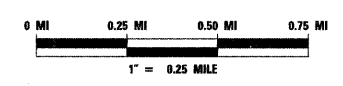
J.U.L.I.E.
JOINT UTILITY LOCATION INFORMATION FOR EXCAVATION
1-800-892-0123
OR 811

PROJECT ENGINEER - PATTI LEBEAU
PROJECT MANAGER - CHERYL KEPLAR
CONTRACT NO. 76B22



BEGIN SECTION 73-15TS STA. 225+06.5
END SECTION 73-15TS STA. 242+85
R 8 W

LOCATION MAP



SECTION GROSS LENGTH = 1,778.5' = 0.337 MILES
SECTION NET LENGTH = 1,778.5' = 0.337 MILES

DESIGN DESIGNATION
(TO BE PROVIDED BY IDOT)



Philip A. Murphy
PHILIP A. MURPHY, P.E.

DATE: *3/18/08*

