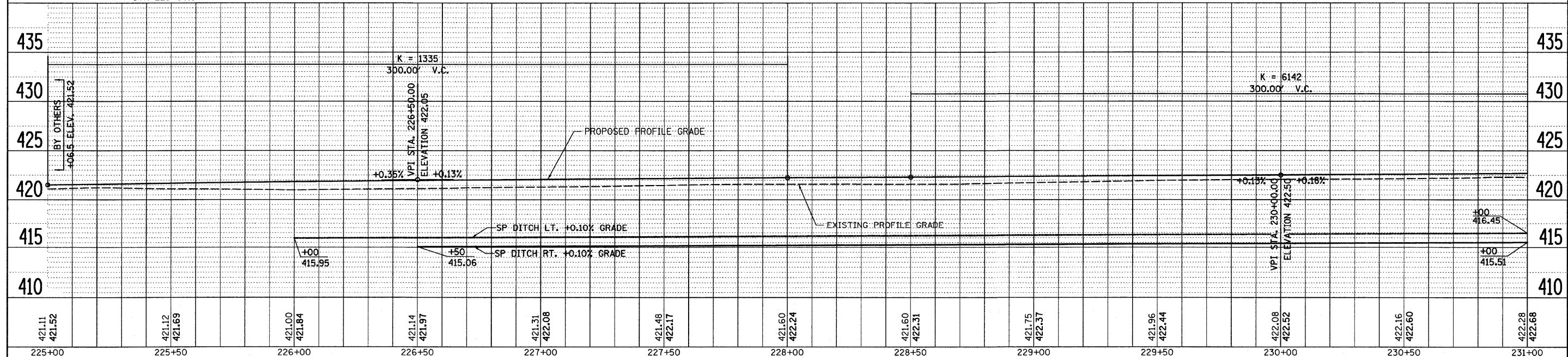
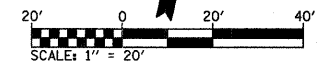


HORSESHOE LAKE ROAD- CURVE DATA
 PI STA. = 229+45.48
 $\Delta = 19^\circ 21' 29''$ (LT)
 $D = 1^\circ 15' 54''$
 $R = 4,529.34'$
 $T = 772.51'$
 $L = 1,530.29'$
 $E = 65.41'$
 $\theta = 3.3\%$
 $T.R. = 44.5'$
 $S.E. RUN = 98'$
 P.C. STA = 221+72.97
 P.T. STA = 237+03.27

2 CENTERED CURVE
 50' - 250'
 10' OFFSET



PLAN	DATE
SURVEYED	BY
PLOTTED	DATE
CHECKED	BY
NO. OF WAY CHECKED	
NO.	CADD FILE NAME

PROFILE	DATE
SURVEYED	BY
PLOTTED	DATE
CHECKED	BY
NO. OF WAY CHECKED	
NO.	STRUCTURE NOTATIONS CHRD

FILE NAME = H:\N\26084\Technical Production\Civil\W017	USER NAME = #USER*	DESIGNED -	REVISED -	STATE OF ILLINOIS DEPARTMENT OF TRANSPORTATION	HORSESHOE LAKE ROAD PLAN & PROFILE SHEETS			F.A.U. RTE. 9111	SECTION 73-15TS	COUNTY MADISON	TOTAL SHEETS 64	SHEET NO. 13
PLT SCALE = 20.0000' / IN.	PLDT DATE = 3/14/2008	DRAWN -	REVISED -		SCALE: 1" = 20'	SHEET NO. 1 OF 3 SHEETS	STA. 225+00.00 TO STA. 231+00.00	CONTRACT NO. 76B22		FED. ROAD DIST. NO. ILLINOIS FED. AID PROJECT		
		CHECKED -	REVISED -									
		DATE -	REVISED -									