

NW RADIUS RETURN				
PT. NO.	STATION	OFFSET		ELEVATION
1	11+03.12	(F) 10.49'	LT	420.31
2	10+98.98	(F) 10.66'	LT	420.36
3	10+89.16	(F) 12.48'	LT	420.47
4	10+79.90	(F) 16.21'	LT	420.59
5	10+71.57	(F) 21.71'	LT	420.70
6	10+64.33	(F) 28.94'	LT	420.82
7	10+58.86	(F) 37.22'	LT	420.94
8	10+55.12	(F) 46.48'	LT	421.05
9	231+82.39	(H) 46.99'	LT	421.16
10	231+72.32	(H) 46.00'	LT	421.28

(F) - FOURNIE LANE
(H) - HORSESHOE LAKE ROAD

NE RADIUS RETURN				
PT. NO.	STATION	OFFSET		ELEVATION
1	11+11.62	(F) 25.51'	RT	420.24
2	11+05.62	(F) 25.63'	RT	420.33
3	10+95.65	(F) 26.36'	RT	420.48
4	10+85.75	(F) 27.75'	RT	420.62
5	10+75.96	(F) 29.81'	RT	420.77
6	10+66.34	(F) 32.51'	RT	420.92
7	10+56.91	(F) 35.84'	RT	421.06
8	10+47.73	(F) 39.79'	RT	421.21
9	10+41.55	(F) 43.33'	LT	421.31
10	232+90.92	(H) 38.55'	LT	421.46
11	232+99.50	(H) 33.33'	LT	421.61
12	233+09.01	(H) 30.10'	LT	421.75
13	233+18.99	(H) 29.00'	LT	421.90

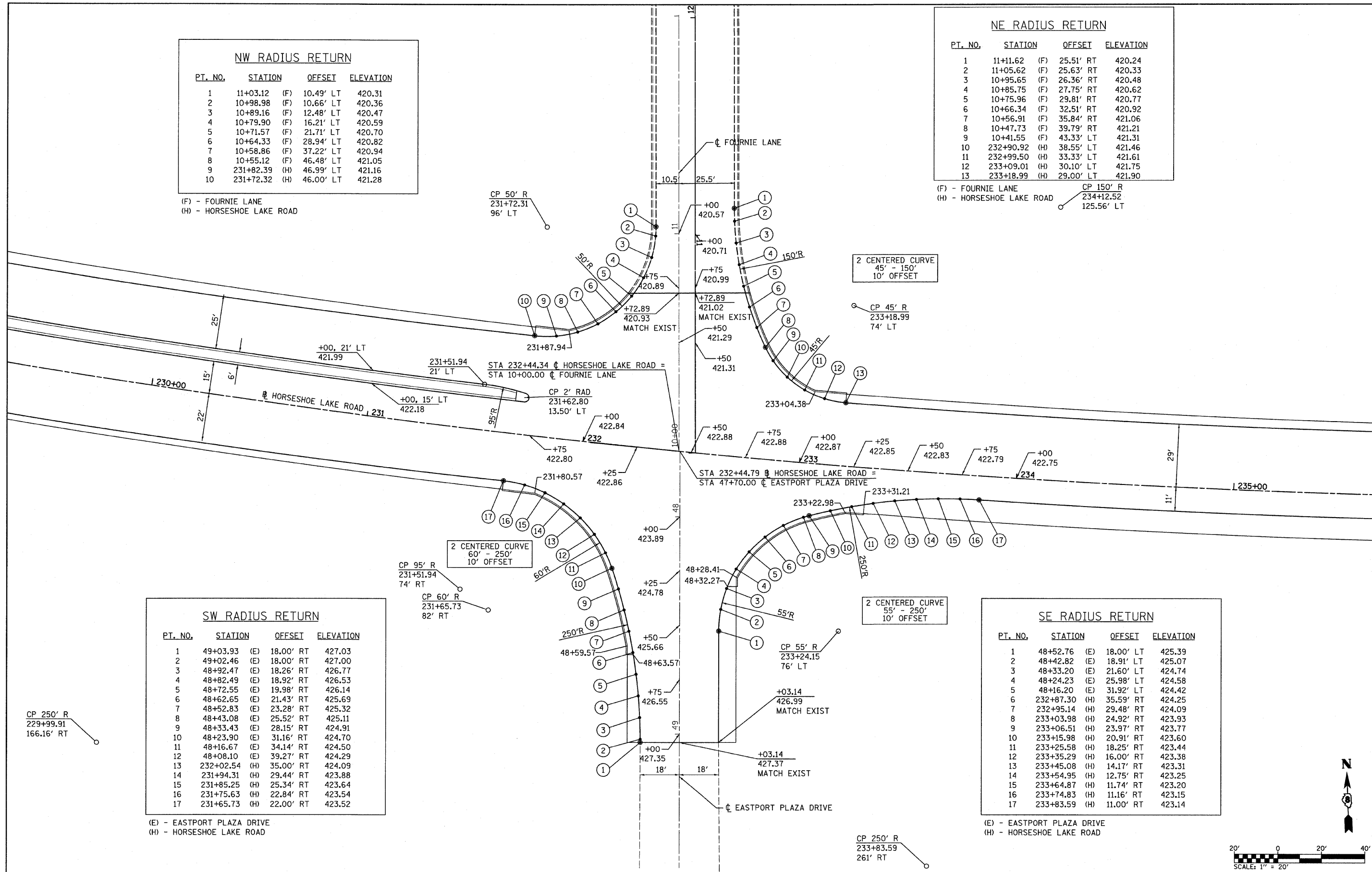
(F) - FOURNIE LANE
(H) - HORSESHOE LAKE ROAD

SW RADIUS RETURN				
PT. NO.	STATION	OFFSET		ELEVATION
1	49+03.93	(E) 18.00'	RT	427.03
2	49+02.46	(E) 18.00'	RT	427.00
3	48+92.47	(E) 18.26'	RT	426.77
4	48+82.49	(E) 18.92'	RT	426.53
5	48+72.55	(E) 19.98'	RT	426.14
6	48+62.65	(E) 21.43'	RT	425.69
7	48+52.83	(E) 23.28'	RT	425.32
8	48+43.08	(E) 25.52'	RT	425.11
9	48+33.43	(E) 28.15'	RT	424.91
10	48+23.90	(E) 31.16'	RT	424.70
11	48+16.67	(E) 34.14'	RT	424.50
12	48+08.10	(E) 39.27'	RT	424.29
13	232+02.54	(H) 35.00'	RT	424.09
14	231+94.31	(H) 29.44'	RT	423.88
15	231+85.25	(H) 25.34'	RT	423.64
16	231+75.63	(H) 22.84'	RT	423.54
17	231+65.73	(H) 22.00'	RT	423.52

(E) - EASTPORT PLAZA DRIVE
(H) - HORSESHOE LAKE ROAD

SE RADIUS RETURN				
PT. NO.	STATION	OFFSET		ELEVATION
1	48+52.76	(E) 18.00'	LT	425.39
2	48+42.82	(E) 18.91'	LT	425.07
3	48+33.20	(E) 21.60'	LT	424.74
4	48+24.23	(E) 25.98'	LT	424.58
5	48+16.20	(E) 31.92'	LT	424.42
6	232+87.30	(H) 35.59'	RT	424.25
7	232+95.14	(H) 29.48'	RT	424.09
8	233+03.98	(H) 24.92'	RT	423.93
9	233+06.51	(H) 23.97'	RT	423.77
10	233+15.98	(H) 20.91'	RT	423.60
11	233+25.58	(H) 18.25'	RT	423.44
12	233+35.29	(H) 16.00'	RT	423.38
13	233+45.08	(H) 14.17'	RT	423.31
14	233+54.95	(H) 12.75'	RT	423.25
15	233+64.87	(H) 11.74'	RT	423.20
16	233+74.83	(H) 11.16'	RT	423.15
17	233+83.59	(H) 11.00'	RT	423.14

(E) - EASTPORT PLAZA DRIVE
(H) - HORSESHOE LAKE ROAD



FILE NAME = H:\P\25004\Technical Production\Civil\W\0
USER NAME = #USER*
DRAWN -
CHECKED -
PLOT DATE = 3/14/2008

DESIGNED -
DRAWN -
CHECKED -
DATE -

REVISED -
REVISED -
REVISED -
REVISED -

STATE OF ILLINOIS
DEPARTMENT OF TRANSPORTATION

INTERSECTION DETAIL
HORSESHOE LAKE RD/FOURNIE LANE/EASTPORT PLAZA DRIVE
SCALE: 1"=20' SHEET NO. 2 OF 2 SHEETS STA. TO STA.

F.A.U. RTE. SECTION COUNTY TOTAL SHEETS SHEET NO.
9111 73-15TS MADISON 64 30
CONTRACT NO. 76B22
FED. ROAD DIST. NO. ILLINOIS FED. AID PROJECT

