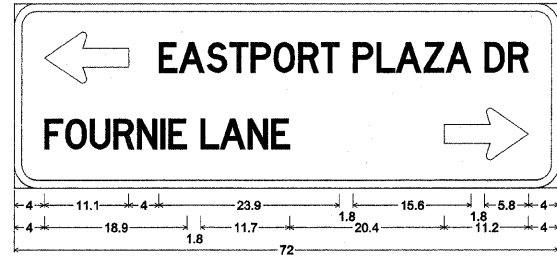
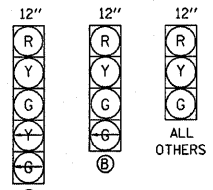


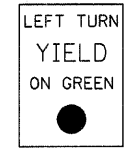
STREET NAME SIGN
DETAIL E
NOT TO SCALE



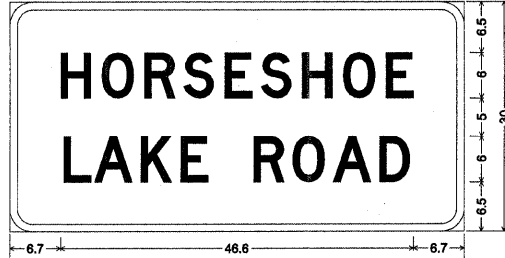
STREET NAME SIGN
DETAIL F
NOT TO SCALE



PROPOSED TRAFFIC SIGNAL FACES



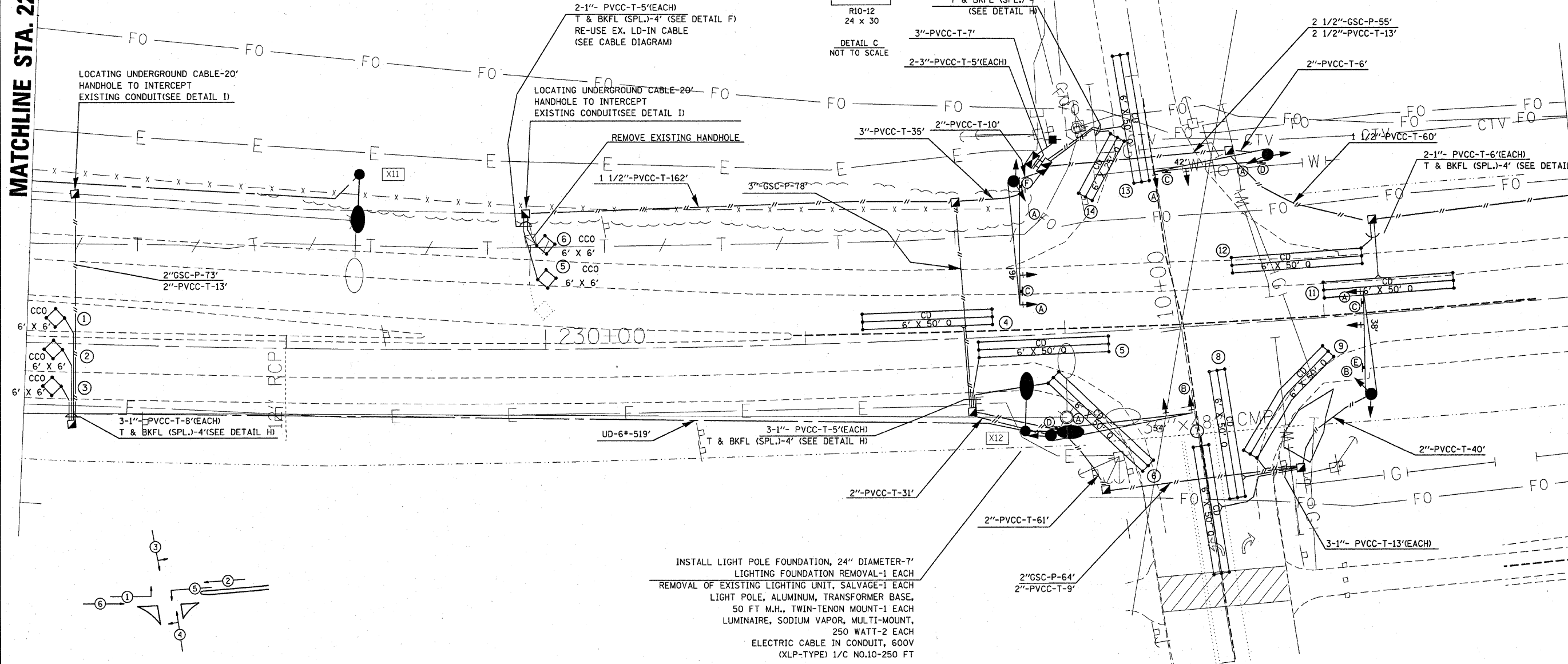
LEFT TURN YIELD ON GREEN
DETAIL C
NOT TO SCALE



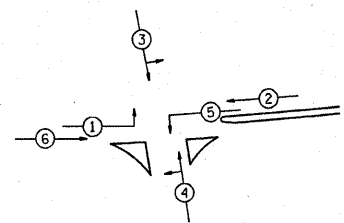
STREET NAME SIGN
DETAIL D
NOT TO SCALE

MATCHLINE STA. 228 + 00

MATCHLINE STA. 234 + 00



INSTALL LIGHT POLE FOUNDATION, 24" DIAMETER-7'
LIGHTING FOUNDATION REMOVAL-1 EACH
REMOVAL OF EXISTING LIGHTING UNIT, SALVAGE-1 EACH
LIGHT POLE, ALUMINUM, TRANSFORMER BASE,
50 FT M.H., TWIN-TENON MOUNT-1 EACH
LUMINAIRE, SODIUM VAPOR, MULTI-MOUNT,
250 WATT-2 EACH
ELECTRIC CABLE IN CONDUIT, 600V
(XLP-TYPE) 1/C NO.10-250 FT



PHASE DESIGNATION DIAGRAM

FULL-ACTUATED CONTROLLER TYPE IV CABINET W/ TRANSCEIVER

PROPOSED SEQUENCE OF OPERATION								
PHASE	1	2	3	4	5	6	7	8
MOVEMENT	→	←	↔	↔	→	→	NOT	NOT
CONCURRENT MOVEMENT PERMITTED	5 OR 6	5 OR 6	NONE	NONE	1 OR 2	1 OR 2	USED	USED

FILE NAME =	USER NAME = keplarc1	DESIGNED -	REVISED -
et\projects\view\ed09707\electrical\tep109707.dgn		DRAWN -	REVISED -
PLOT SCALE = 28.0000' / IN.		CHECKED -	REVISED -
PLOT DATE = 3/17/2008		DATE -	REVISED -

STATE OF ILLINOIS
DEPARTMENT OF TRANSPORTATION

EASTPORT PLAZA DRIVE /FOURNIE LANE LIGHTING AND TRAFFIC SIGNAL PLAN			
SCALE:	SHEET NO. 6 OF 9 SHEETS	STA. _____ TO STA. _____	

F.A.I. RTE.	SECTION	COUNTY	TOTAL SHEETS	SHEET NO.
9111	73-15TS	MADISON	64	40
CONTRACT NO. 76B22				
FED. ROAD DIST. NO. - ILLINOIS FED. AID PROJECT				