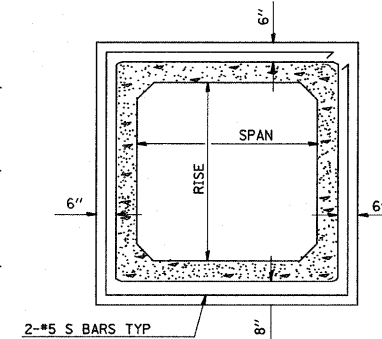
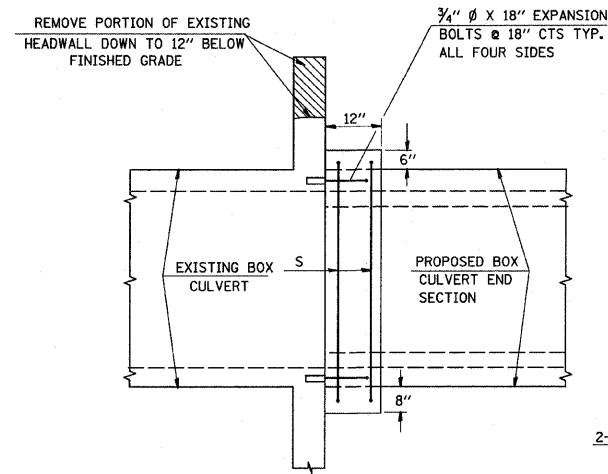


BUTT JOINT DETAIL

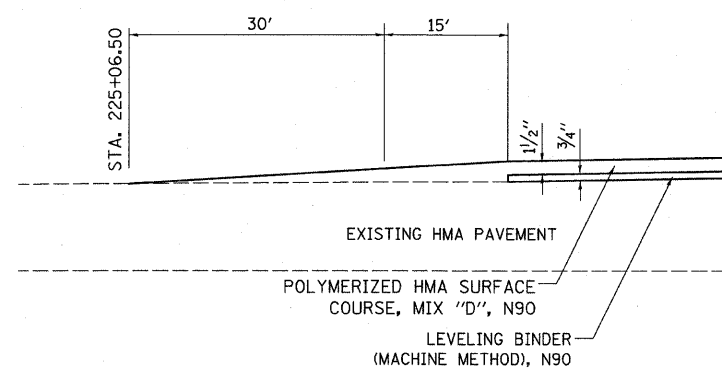
DETAILS OF CONCRETE COLLAR FOR BOX CULVERT



SPAN X RISE	CL. SI CONC. CU. YD. (EST.)
2' X 2'	0.26
3' X 2'	0.30
3' X 3'	0.34
4' X 2'	0.36
4' X 3'	0.39
4' X 4'	0.43
5' X 2'	0.41
5' X 3'	0.45
5' X 4'	0.49
6' X 2'	0.47
6' X 3'	0.51
6' X 4'	0.54

GENERAL NOTES:

- CLASS SI CONCRETE SHALL BE USED THROUGHOUT.
- CONCRETE COLLARS WILL BE PAID FOR AT THE CONTRACT UNIT PRICE, EACH, FOR CONCRETE COLLARS INCLUDING ALL MATERIAL AND LABOR SPECIFIED TO COMPLETE THE WORK IN PLACE.



TEMPORARY TAPER DETAIL

FILE NAME =	USER NAME = #USER#	DESIGNED -	REVISED -
H:\NP\25004\Technical Production\Civil\W07	7\Microstation\Detoe2.dgn	DRAWN -	REVISED -
		CHECKED -	REVISED -
		DATE -	REVISED -

**STATE OF ILLINOIS
DEPARTMENT OF TRANSPORTATION**

DETAILS

SCALE: SHEET NO. OF SHEETS STA. TO STA.

F.A.U. RTE.	SECTION	COUNTY	TOTAL SHEETS	SHEET NO.
9111	73-15TS	MADISON	64	47
CONTRACT NO. 76B22				
FED. ROAD DIST. NO. [ILLINOIS] FED. AID PROJECT				