

F.A.P. RTE.	SECTION	COUNTY	TOTAL SHEETS	SHEET NO.
329	(125,126)RS-2	RANDOLPH	34	3
FED. ROAD DIST. NO.	ILLINOIS	CONTRACT NO. 76B38		

STATE OF ILLINOIS
DEPARTMENT OF TRANSPORTATION
DIVISION OF HIGHWAYS

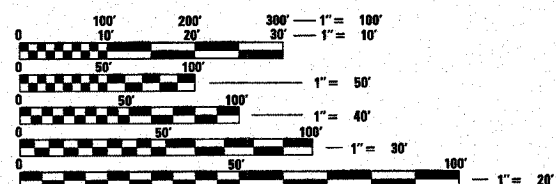
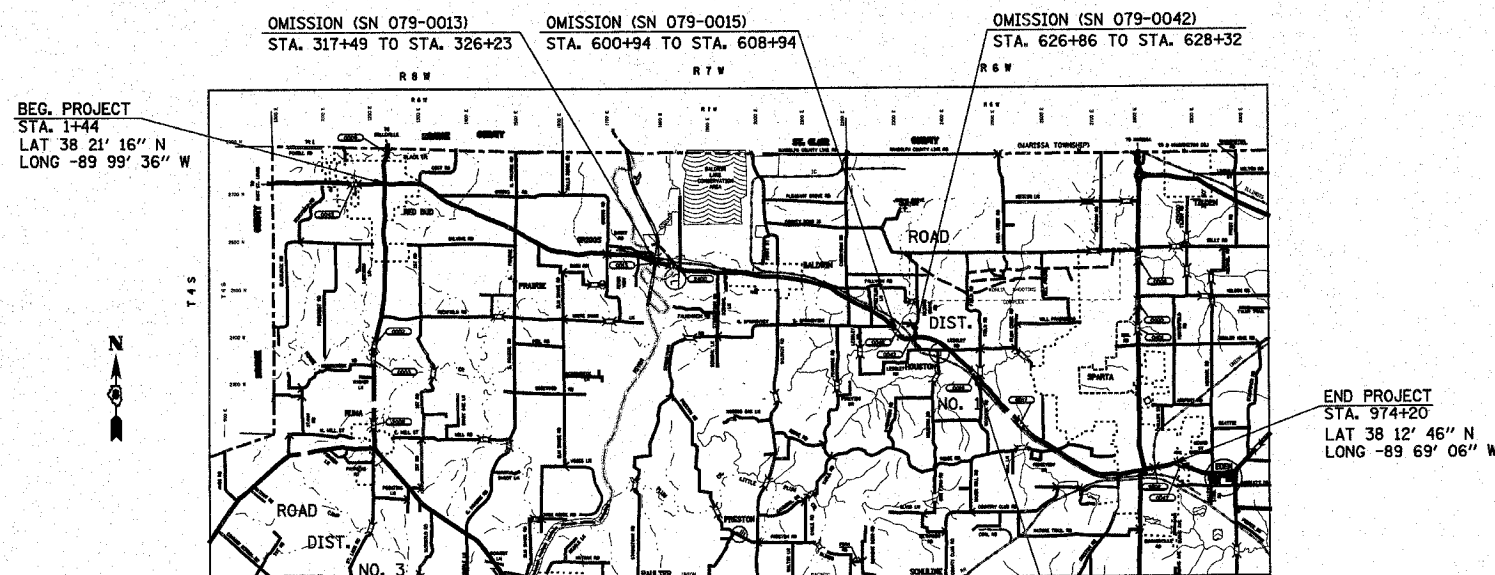
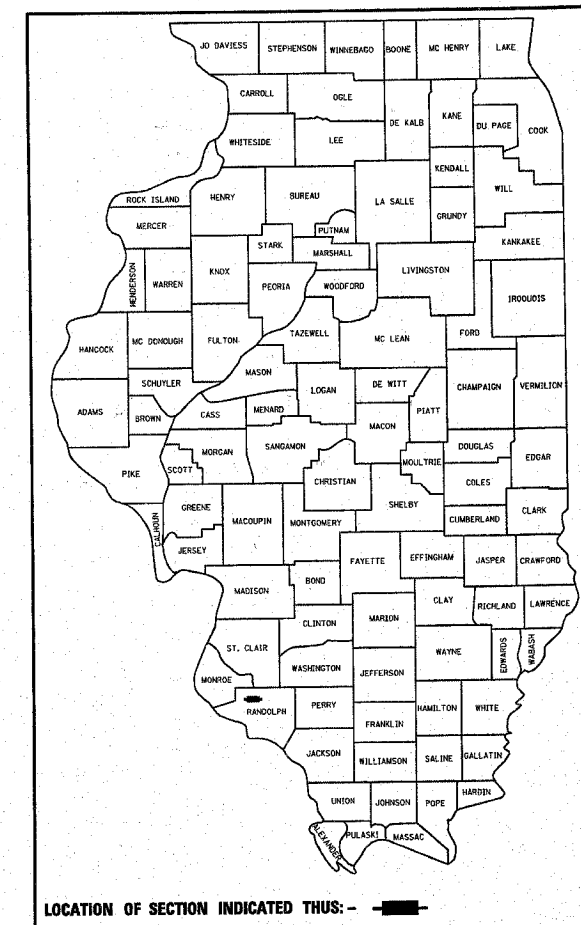
**PROPOSED
HIGHWAY PLANS**

FAP ROUTE 329 (IL 154)
SECTION (125,126)RS-2

RANDOLPH COUNTY
C-98-008-08
RESURFACING

FOR INDEX OF SHEETS, SEE SHEET NO. 2

D-89-015-08



FULL SIZE PLANS HAVE BEEN PREPARED USING STANDARD ENGINEERING SCALES. REDUCED SIZED PLANS WILL NOT CONFORM TO STANDARD SCALES. IN MAKING MEASUREMENTS ON REDUCED PLANS, THE ABOVE SCALES MAY BE USED.

J.U.L.I.E.
JOINT UTILITY LOCATION INFORMATION FOR EXCAVATION
1-800-892-0123
OR 811

PROJECT ENGINEER: PATTI LEBEAU: (618) 346-3179
PROJECT MANAGER: CHERYL KEPLAR (618) 346-3186

CONTRACT NO. 76B38

2007 ADT = 7100 (ACTUAL)
2008 ADT = 7200 (ESTIMATED)
2028 ADT = 9100 (ESTIMATED)
SU = 5.3% MU = 3.2%

PROJECT LENGTH
GROSS LENGTH = 18.42 MI = 97,276 FT
NET LENGTH = 18.03 MI = 95,191 FT

STATE OF ILLINOIS
DEPARTMENT OF TRANSPORTATION
DIVISION OF HIGHWAYS

SUBMITTED March 27, 2008

Mary C. Jamel
DEPUTY DIRECTOR OF HIGHWAYS, REGION 5 ENGINEER

May 9, 2008
Eric E. Haran
ENGINEER OF DESIGN AND ENVIRONMENT

May 9, 2008
Christina M. Reed
DIRECTOR OF HIGHWAYS, CHIEF ENGINEER

**PRINTED BY THE AUTHORITY
OF THE STATE OF ILLINOIS**