

STATE OF ILLINOIS
DEPARTMENT OF TRANSPORTATION
DIVISION OF HIGHWAYS
**PROPOSED
HIGHWAY PLANS**

FOR INDEX OF SHEETS, SEE SHEET NO. 2

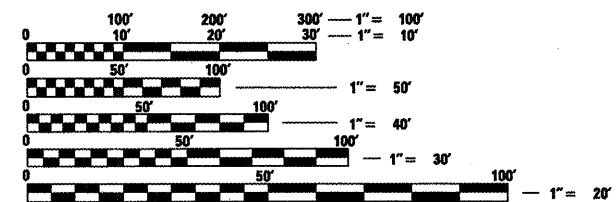
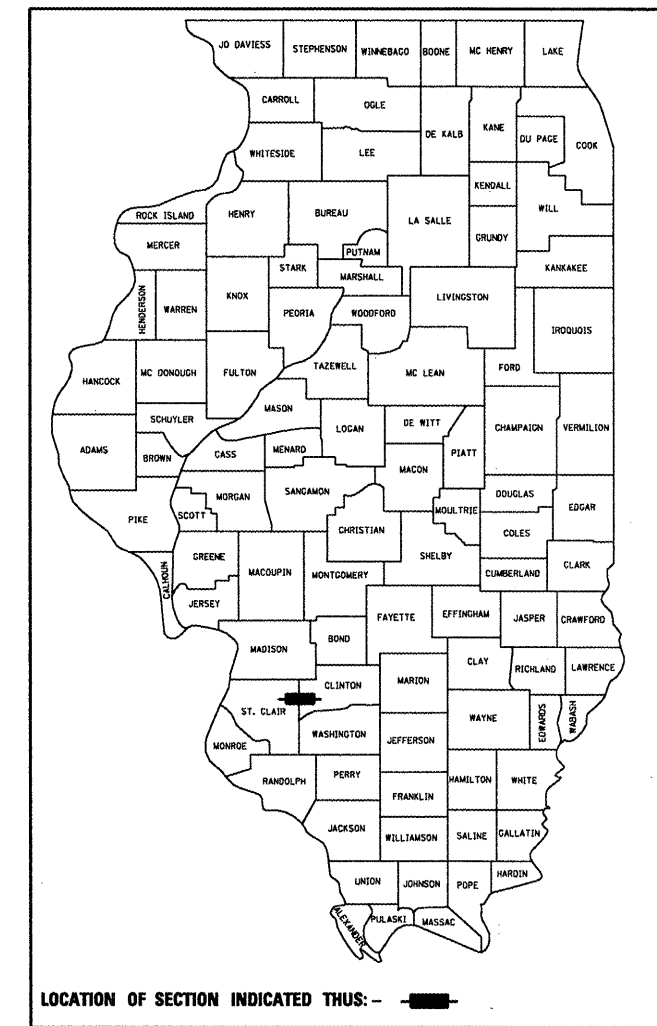
FAI ROUTE 64
SECTION 82-(8,9,10)
PROJECT C-98-016-08
ST. CLAIR AND CLINTON COUNTIES

PATCHING

TRAFFIC DATA

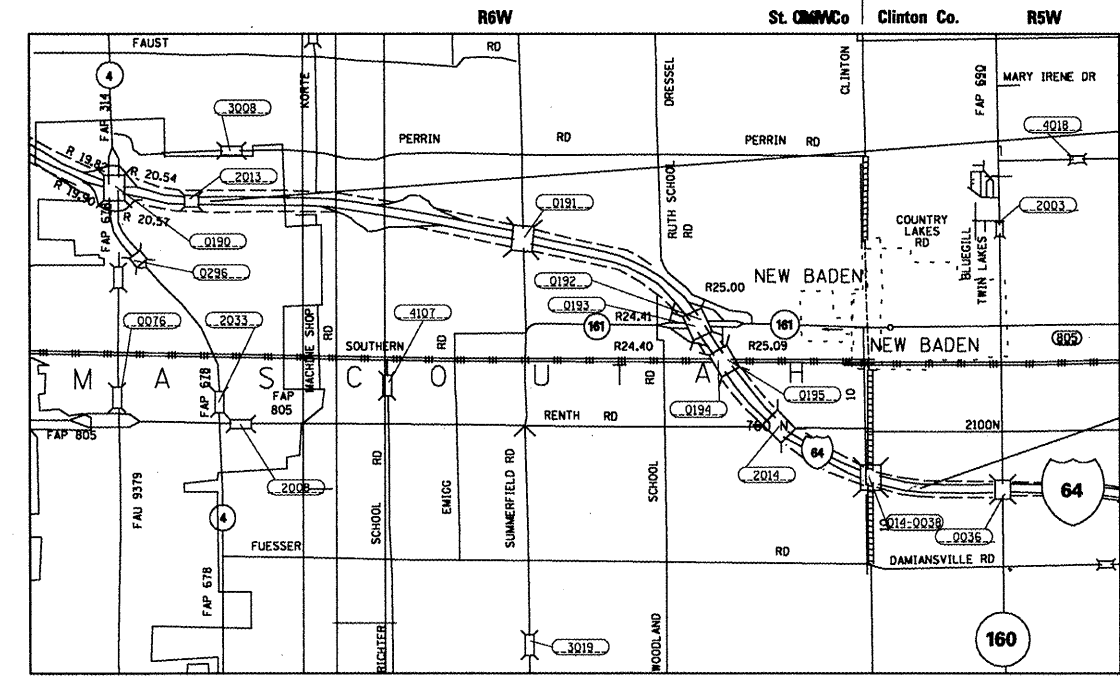
ADT	Begin Project to IL 4	IL 4 to IL 161	IL 161 to End Project
Current (2005):	32,600	28,600	23,700
20-Year (2025):	45,600	38,500	31,900
SU %:	3.8%	4.7%	6.5%
MU %:	19.4%	21.3%	26.5%

F.A.I. RTE.	SECTION	COUNTY	TOTAL SHEETS	SHEET NO.
64	82-(8,9,10)BS-3	ST. CLAIR AND CLINTON	1	1
FED. ROAD DIST. NO.	ILLINOIS	CONTRACT NO. 76B46		



FULL SIZE PLANS HAVE BEEN PREPARED USING STANDARD ENGINEERING SCALES. REDUCED SIZED PLANS WILL NOT CONFORM TO STANDARD SCALES. IN MAKING MEASUREMENTS ON REDUCED PLANS, THE ABOVE SCALES MAY BE USED.

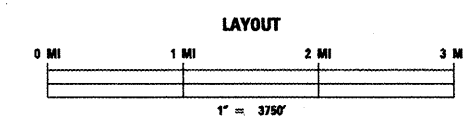
J.U.L.I.E.
JOINT UTILITY LOCATION INFORMATION FOR EXCAVATION
1-800-892-0123
OR 811



BEGIN
STA. 1101+99.78
38° 33' 16" N
89° 48' 58" W

END
STA. 1475+80.00
28° 31' 03" N
89° 41' 52" W

LOCATION MAP
MASCOUTAH & LOOKING GLASS TOWNSHIPS



GROSS LENGTH = 37,380.22 Feet OR 7.08 Miles
NET LENGTH = 37,380.22 Feet OR 7.08 Miles

PROJECT ENGINEER: PATTI LeBEAU 618 346-3179
PROJECT MANAGER: CHERYL KEPLAR 618 346-3186

CONTRACT NO. 76B46

STATE OF ILLINOIS
DEPARTMENT OF TRANSPORTATION
DIVISION OF HIGHWAYS

SUBMITTED *March 28 20 08*

Mary C. Jamie
DEPUTY DIRECTOR OF HIGHWAYS, REGION ENGINEER

May 9 20 08
Eric E. Hanson
ENGINEER OF DESIGN AND ENVIRONMENT

May 9 20 08
Christine M. Reed
DIRECTOR OF HIGHWAYS, CHIEF ENGINEER

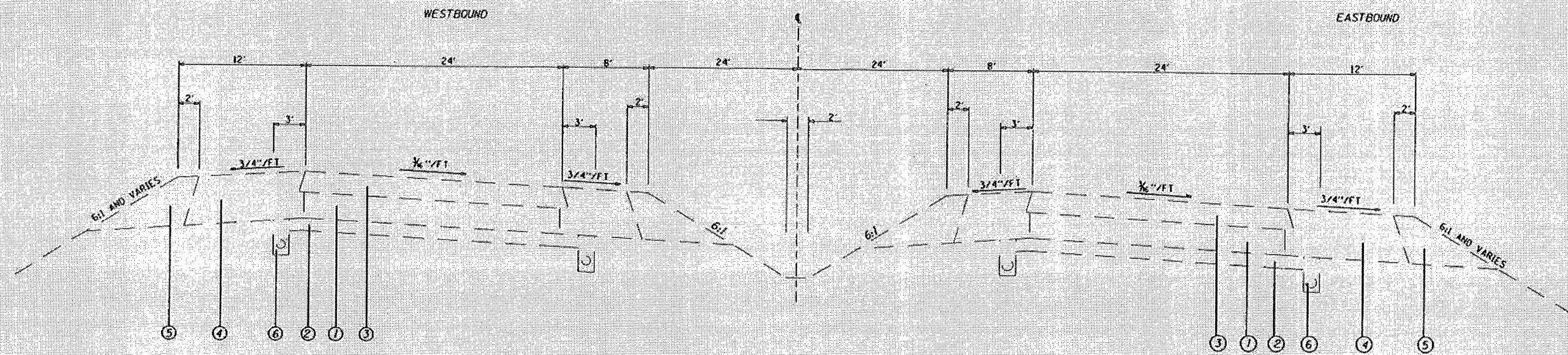
**PRINTED BY THE AUTHORITY
OF THE STATE OF ILLINOIS**

SUMMARY OF QUANTITIES

SUMMARY OF QUANTITIES			CONSTRUCTION TYPE CODE		
CODE NO	ITEM	UNIT	TOTAL QUANTITIES	100% STATE ST. CLAIR CO. 1000	100% STATE CLINTON CO. 1000
40800020	BITUMINOUS MATERIALS (PRIME COAT)	TON	1.2	1.2	
40800030	AGGREGATE (PRIME COAT)	TON	5.8	5.7	0.1
44200629	CLASS A PATCHES, TYPE I, 15 INCH	SQ YD	5	5	
44200630	CLASS A PATCHES, TYPE II, 15 INCH	SQ YD	15	15	
44200631	CLASS A PATCHES, TYPE III, 15 INCH	SQ YD	62	62	
44200632	CLASS A PATCHES, TYPE IV, 15 INCH	SQ YD	80	80	
44201027	CLASS B PATCHES, TYPE I, 15 INCH	SQ YD	5	5	
44201031	CLASS B PATCHES, TYPE II, 15 INCH	SQ YD	67	67	
44201035	CLASS B PATCHES, TYPE III, 15 INCH	SQ YD	25	25	
44201037	CLASS B PATCHES, TYPE IV, 15 INCH	SQ YD	30	30	
44213000	PATCHING REINFORCEMENT	SQ YD	162	162	
44213100	PAVEMENT FABRIC	SQ YD	55	55	
44213200	SAW CUTS	FOOT	1448	1448	
67000400	ENGINEER'S FIELD OFFICE, TYPE A	CAL MO	3	3	
67100100	MOBILIZATION	L SUM	1	1	
70100420	TRAFFIC CONTROL AND PROTECTION, STANDARD 701411	EACH	8	8	
70100800	TRAFFIC CONTROL AND PROTECTION, STANDARD 701401	L SUM	1	1	
70101805	TRAFFIC CONTROL AND PROTECTION, (SPECIAL)	EACH	8	8	
70106800	CHANGEABLE MESSAGE SIGN	CAL MO	4	4	
70300100	SHORT-TERM PAVEMENT MARKING	FOOT	600	600	
70301000	WORK ZONE PAVEMENT MARKING REMOVAL	SQ FT	200	167	33
*76001110	PAINT PAVEMENT MARKING - LINE 4"	FOOT	4743	4743	
X4421000	PARTIAL DEPTH PATCHING	TON	543	536	7
X4422027	PARTIAL DEPTH REMOVAL 2.5	SQ YD	3875	3828	47
20016200	DECK SLAB REPAIR (PARTIAL)	SQ YD	27.5	27.5	
20017202	DOWEL BARS 1 1/2"	EACH	248	248	
20075310	TIE BARS 3/4"	EACH	194	194	

*SPECIALTY ITEMS

FILE NAME: c:\projects\ad02408\plan\p1n2408b.dgn	USER NAME: a1fa-ub	DESIGNED: ---	REVISED: ---	STATE OF ILLINOIS DEPARTMENT OF TRANSPORTATION	SUMMARY OF QUANTITIES	SCALE: 1:64	SECTION: 82:08.910H	COUNT: 11	TOTAL SHEETS: 3	SHEET NO. 3
PLDT SCALE: 1/8" = 1'-0"	CHECKED: ---	DATE: ---	REVISED: ---	CONTRACT NO. 76B46		FED. ROAD DIST. NO. ILLINOIS FED. AID PROJECT				

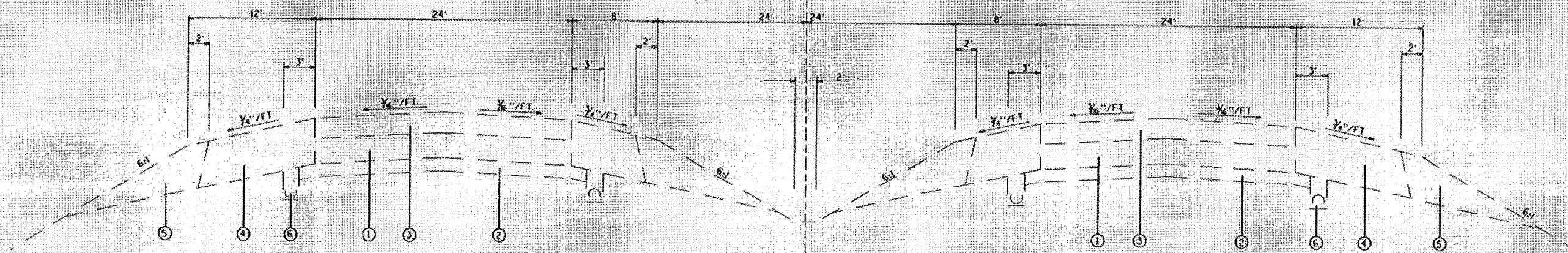


WB - SUPERELEVATION

STA. 1192+36.95 TO STA. 1217+33.44
 STA. 1311+77.57 TO STA. 1345+12.21
 STA. 1356+65.00 TO STA. 1358+17.01

EB - SUPERELEVATION

STA. 1192+36.95 TO STA. 1207+95.63
 STA. 1214+30.24 TO STA. 1217+33.44
 STA. 1311+77.57 TO STA. 1345+79.31
 STA. 1351+74.80 TO STA. 1358+17.01



WB - TANGENT SECTION

STA. 1153+80.85 TO STA. 1192+36.95
 STA. 1217+33.44 TO STA. 1228+96.44
 STA. 1243+07.48 TO STA. 1267+62.94
 STA. 1268+31.60 TO STA. 1311+77.57
 STA. 1358+17.01 TO STA. 1364+26.26
 STA. 1367+29.00 TO STA. 1376+42.69

EB - TANGENT SECTION

STA. 1153+80.85 TO STA. 1192+36.95
 STA. 1217+33.44 TO STA. 1233+37.00
 STA. 1247+48.74 TO STA. 1311+77.57
 STA. 1358+17.01 TO STA. 1363+71.57
 STA. 1366+74.31 TO STA. 1374+17.20

LEGEND

- ① EXISTING C.R.P.C.C. PAVEMENT 8"
- ② EXISTING SUB-BASE 4"
- ③ EXISTING RESURFACING 6-1/2" OR 8-1/4"
- ④ EXISTING BITUMINOUS SHOULDER
- ⑤ EXISTING AGGREGATE SHOULDER, TYPE B
- ⑥ EXISTING PIPE UNDERDRAINS
- ⑦ EXISTING JR PCC Pavement 9 1/2"
- ⑧ EXISTING CONCRETE CURB & GUTTER COMB., B 6.24

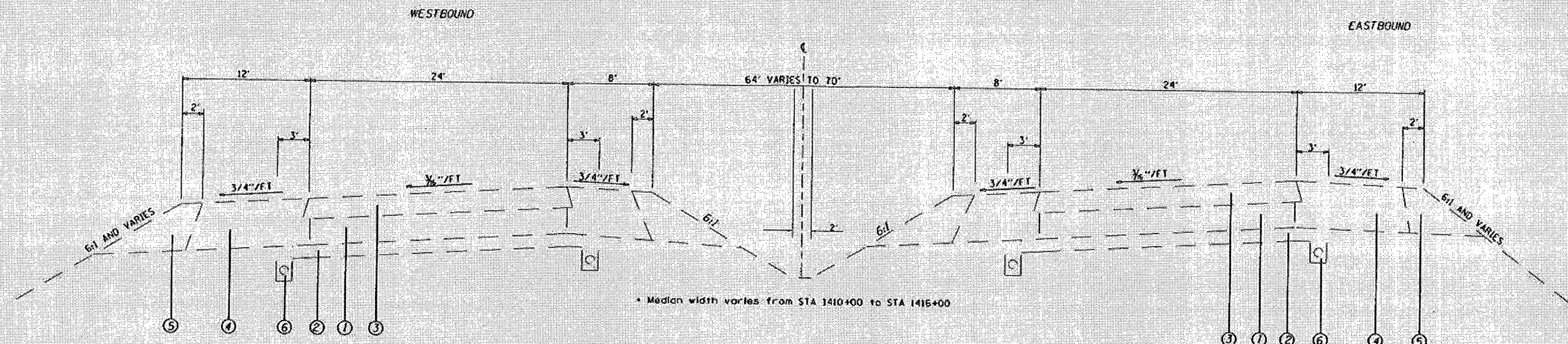
FILE NAME =	USER NAME = RUSBYN	DESIGNED -	REVISED -
IFIELD4		DRAWN -	REVISED -
	PLOT SCALE = #SCALER	CHECKED -	REVISED -
	PLOT DATE = #DATEX	DATE -	REVISED -

STATE OF ILLINOIS
 DEPARTMENT OF TRANSPORTATION

TYPICALS
 SCALE: 30' = 1" SHEET NO. OF SHEETS STA. TO STA.

ST. CLAIR & CLINTON COUNTIES			
F.A. RTE.	SECTION	COUNTY	TOTAL SHEET NO.
1-64	82-10.3.1011	IL	4
FED. ROAD DIST. NO. ILLINOIS FED. AID PROJECT			CONTRACT NO. 76848

ST. CLAIR & CLINTON



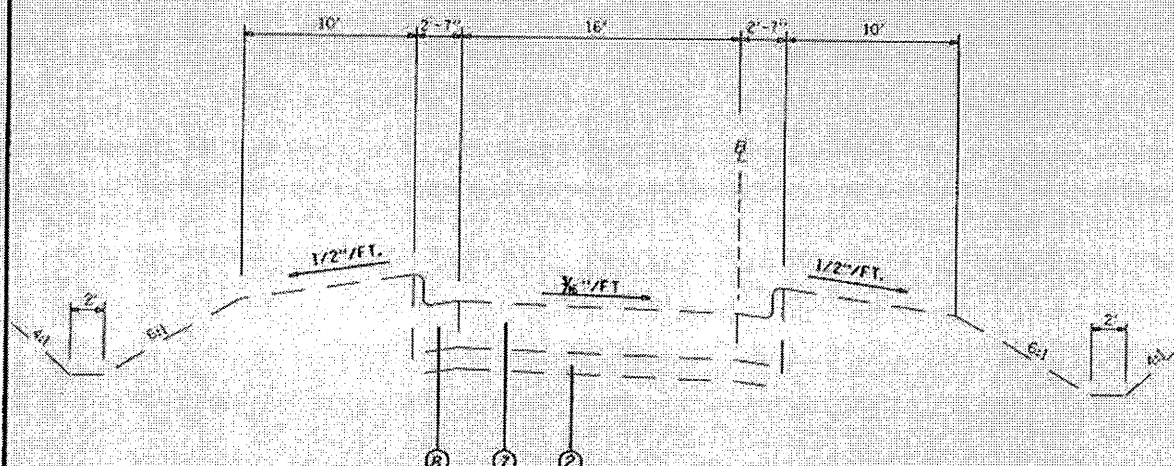
WB - SUPERELEVATION

STA. 1113+67.50 TO STA. 1138+22.60
 STA. 1144+59.17 TO STA. 1153+80.85
 STA. 1376+42.69 TO STA. 1378+55.50
 STA. 1384+40.77 TO STA. 1475+80.00

EB - SUPERELEVATION

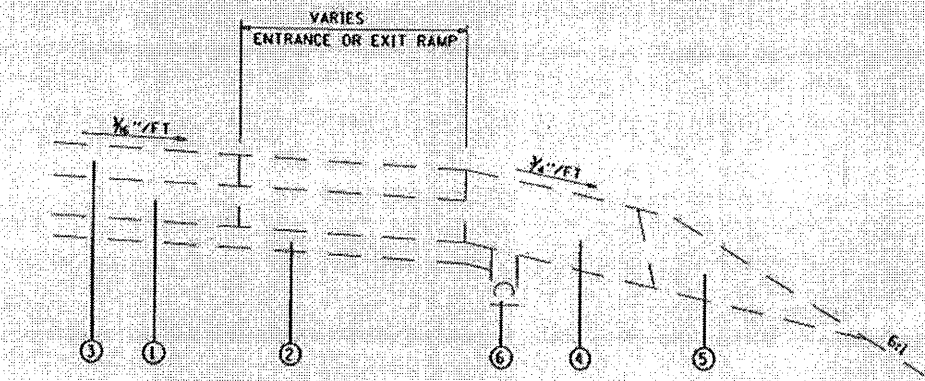
STA. 1101+99.78 TO STA. 1108+30.33
 STA. 1114+62.10 TO STA. 1136+87.50
 STA. 1248+45.54 TO STA. 1153+80.85
 STA. 1386+32.37 TO STA. 1475+80.00

* Median width varies from STA 1410+00 to STA 1415+00



REST AREA RAMPS

EASTBOUND	WESTBOUND
STA. 15+87.78 TO STA. 25+60.73	STA. 15+83.86 TO STA. 25+42.02
STA. 31+44.69 TO STA. 39+73.11	STA. 30+95.98 TO STA. 38+97.43



ENTRANCE AND EXIT RAMPS

EASTBOUND	WESTBOUND
STA. 1108+30.33 TO STA. 1114+62.10	STA. 1101+99.78 TO STA. 1113+67.50
STA. 1136+87.50 TO STA. 1148+45.54	STA. 1138+22.60 TO STA. 1144+59.17
STA. 1207+75.63 TO STA. 1214+30.24	STA. 1228+96.44 TO STA. 1243+07.48
STA. 1233+37.75 TO STA. 1247+48.74	STA. 1261+67.94 TO STA. 1268+31.60
STA. 1345+79.31 TO STA. 1351+74.80	STA. 1345+12.21 TO STA. 1356+56.00
STA. 1374+77.20 TO STA. 1379+59.33	STA. 1378+55.50 TO STA. 1380+27.93
STA. 1382+34.40 TO STA. 1386+32.37	STA. 1383+02.78 TO STA. 1384+40.77

- LEGEND**
- ① EXISTING C.R.P.C.C. PAVEMENT 8"
 - ② EXISTING SUB-BASE 4"
 - ③ EXISTING RESURFACING 6-1/2" OR 8-1/4"
 - ④ EXISTING BITUMINOUS SHOULDER
 - ⑤ EXISTING AGGREGATE SHOULDER, TYPE B
 - ⑥ EXISTING PIPE UNDERDRAINS
 - ⑦ EXISTING JR PCC Pavement 9 1/2"
 - ⑧ EXISTING CONCRETE CURB & GUTTER COMB., B 6.24

FILE NAME =	USER NAME = ROSEK	DESIGNED -	REVISED -
PROJECT		DRAWN -	REVISED -
		CHECKED -	REVISED -
		DATE -	REVISED -

STATE OF ILLINOIS
DEPARTMENT OF TRANSPORTATION

TYPICALS

SCALE: 50' = 1" SHEET NO. OF SHEETS STA. TO STA.

* ST. CLAIR & CLINTON COUNTIES				
P.A. DATE	SECTION	COUNTY	TOTAL SHEETS	SHEET NO.
1:59	82-10-3-10H		11	5
CONTRACT NO. 76B46				
FED. ROAD DIST. NO. ILLINOIS FED. AID PROJECT				

CLASS A PATCH LOCATION SCHEDULE

STATION	LANE TO BE PATCHED	PATCH LENGTH (FT.)	PATCH WIDTH (FT.)	TYPE 1 (S.Y.)	TYPE 2 (S.Y.)	TYPE 3 (S.Y.)	TYPE 4 (S.Y.)	SAW CUTS (FT.)	PAVEMENT REINFORCEMENT (S.Y.)	TIE BARS # & 24" LONG (EA.)
I-64 EAST BOUND										
1252+70	R	25	6			16.7		95.5	16.7	24
1315+93	R	40	6				26.7	140.5	26.7	38
1367+29	R	15	12			20.0		89.5	20.0	
1457+22	R	40	6				26.7	140.5	26.7	38
ANTICIPATED				4.9	14.9	24.9	26.7	418.0	71.4	94
TOTALS				4.9	14.9	61.6	80.0	884.0	161.4	194

CLASS B PATCH LOCATION SCHEDULE

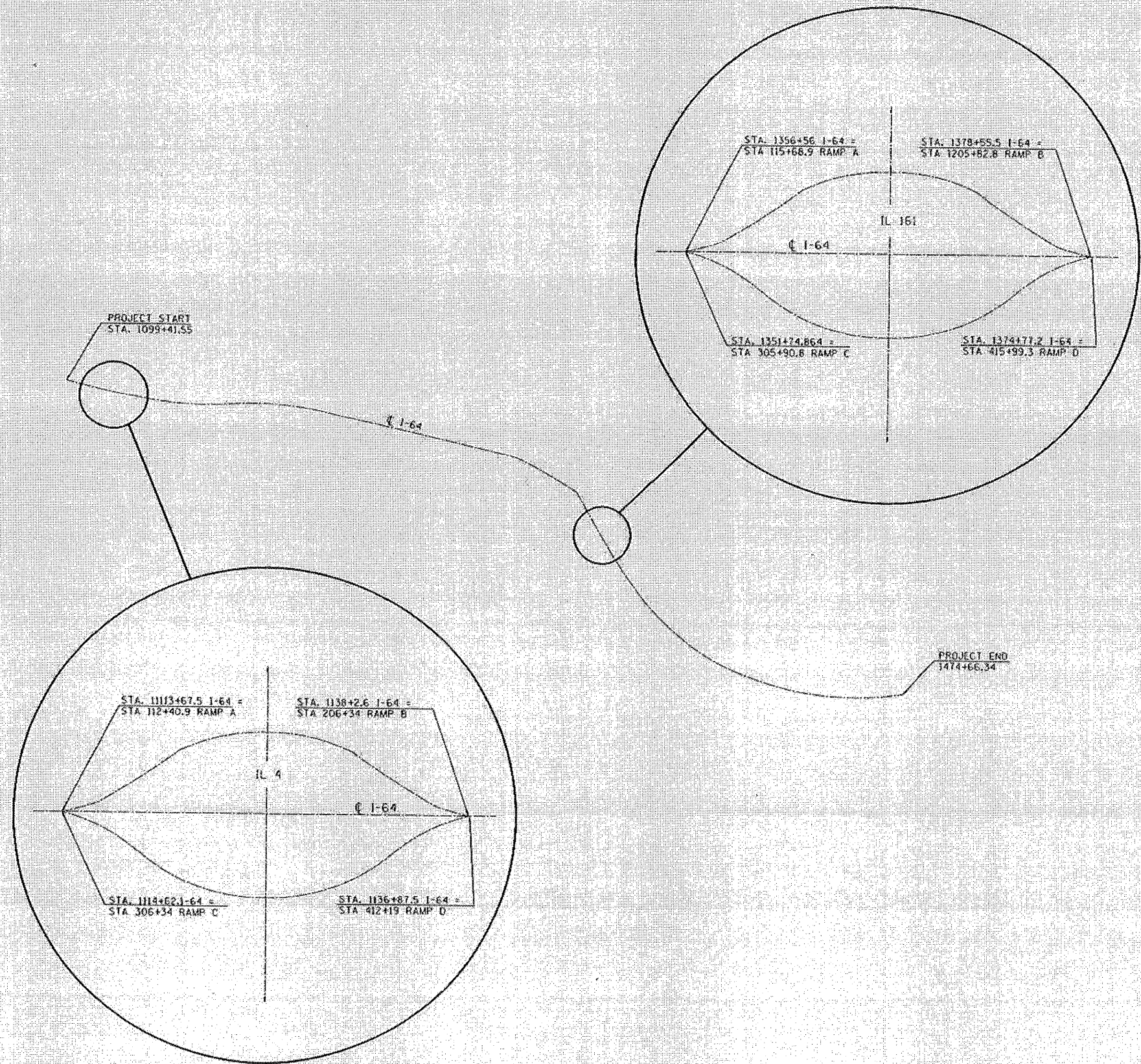
DIRECTION OF TRAVEL	STATION	LANE TO BE PATCHED	PATCH LENGTH (FT.)	PATCH WIDTH (FT.)	TYPE 1 (S.Y.)	TYPE 2 (S.Y.)	TYPE 3 (S.Y.)	TYPE 4 (S.Y.)	SAW CUTS (FT.)	PAVEMENT FABRIC (S.Y.)	DOBEL BARS (EA.)
RAMPS AT IL-4											
EB	116+70	OFF RAMP	6	16		10.7			60.0	0.0	28
WB	107+47	ON RAMP	6	16		10.7			60.0	0.0	28
RAMPS AT IL-161											
EB	310+24	OFF RAMP	6	16		10.7			60.0	0.0	28
EB	311+26	OFF RAMP	6	16		10.7			60.0	0.0	28
EB	311+59	OFF RAMP	6	16		10.7			60.0	0.0	28
ANTICIPATED				4.9	13.3	24.9	30.0	264.2	54.9	108.00	
TOTALS				4.9	66.7	24.9	30.0	564.2	54.9	248	

BRIDGE DECK PARTIAL PATCH SCHEDULE

LAYOUT ** START STATION	LAYOUT ** END STATION	START STATION	END STATION	FROM OFFSET (FT.)	TO OFFSET (FT.)	LENGTH	WIDTH	PATCH AREA (S.Y.)
I-64 STRUCTURE OVER NORFOLK SOUTHERN R.R. (WEST BOUND) (SN 082-0195) - START STATION- 1382+47.97 (SOUTH ABUTMENT AT								
0+51	0+54	1382+98.97	1383+01.97	2' RT	4' RT	3	2	0.67
0+74	0+77	1383+21.97	1383+24.97	1' RT	4' RT	3	3	1.00
0+91	1+37	1383+38.97	1383+84.97	2' RT	4' RT	46	2	10.22
1+59	1+64	1384+06.97	1384+11.97	2' RT	4' RT	5	2	1.11
SUBTOTAL								13.00
I-64 STRUCTURE OVER IL-161 (EAST BOUND) (SN 082-0192) - START STATION- 1364+18.44 (WEST END ABUTMENT AT CENTERLINE								
0+40	0+44	1364+58.44	1364+62.44	2' RT	4' RT	4	2	0.89
1+65	1+69	1365+83.44	1365+87.44	2' RT	4' RT	4	2	0.89
1+84	2+09	1366+02.44	1366+27.44	2' RT	4' RT	25	2	5.56
SUBTOTAL								7.34
I-64 STRUCTURE OVER IL-161 (WEST BOUND) (SN 082-0192) - START STATION- 1366+82.13 (EAST END ABUTMENT AT CENTERLINE								
0+25	0+30	1366+57	1366+52	6' RT	9' RT	5	3	1.67
SUBTOTAL								1.67
TOTAL								22.01
ANTICIPATED								5.50
GRAND TOTALS								27.51

PARTIAL DEPTH PATCHING SCHEDULE

STATION	LANE	LENGTH (FT.)	WIDTH (FT.)	PARTIAL DEPTH REMOVAL 2 1/2" (SQ. YD.)	BITUMINOUS PRIME COAT (TONS)	AGGREGATE PRIME COAT (TONS)	PARTIAL DEPTH PATCHING (TONS)
I-64 EASTBOUND							
1118 + 43	RT	12	6	8.0	0.003	0.012	1.1
1124 + 04	RT	50	6	33.3	0.010	0.050	4.7
1126 + 83	RT	125	6	83.3	0.026	0.125	11.7
1133 + 16	RT	10	6	6.7	0.002	0.010	0.9
1150 + 52	RT	30	6	20.0	0.006	0.030	2.8
1176 + 69	RT	50	6	33.3	0.010	0.050	4.7
1258 + 67	RT	16	6	10.7	0.003	0.016	1.5
1284 + 71	LT	20	6	13.3	0.004	0.020	1.9
1293 + 10	RT	10	6	6.7	0.002	0.010	0.9
1313 + 19	RT	10	6	6.7	0.002	0.010	0.9
1321 + 38	RT	10	6	6.7	0.002	0.010	0.9
1331 + 19	RT	10	6	6.7	0.002	0.010	0.9
1332 + 47	RT	10	6	6.7	0.002	0.010	0.9
1364 + 22	RT	30	12	40.0	0.013	0.060	5.6
1377 + 44	RT	6	12	8.0	0.003	0.012	1.1
1377 + 44	LT	6	12	8.0	0.003	0.012	1.1
1388 + 00	RT	15	6	10.0	0.003	0.015	1.4
1388 + 56	RT	30	6	20.0	0.006	0.030	2.8
1389 + 75	RT	30	6	20.0	0.006	0.030	2.8
1393 + 69	RT	40	6	26.7	0.008	0.040	3.7
1404 + 74	RT	20	6	13.3	0.004	0.020	1.9
1456 + 67	RT	20	6	13.3	0.004	0.020	1.9
1458 + 03	RT	20	6	13.3	0.004	0.020	1.9
1458 + 30	RT	30	6	20.0	0.006	0.030	2.8
I-64 WESTBOUND							
1125 + 03	RT	10	6	6.7	0.002	0.010	0.9
1126 + 03	RT	10	6	6.7	0.002	0.010	0.9
1151 + 11	RT	50	6	33.3	0.010	0.050	4.7
1159 + 84	RT	120	6	80.0	0.025	0.120	11.2
1265 + 66	RT	25	6	16.7	0.005	0.025	2.3
1367 + 26	RT	30	6	20.0	0.006	0.030	2.8
1383 + 57	RT	60	6	40.0	0.013	0.060	5.6
1387 + 34	RT	10	6	6.7	0.002	0.010	0.9
1395 + 19	RT	25	6	16.7	0.005	0.025	2.3
1396 + 49	RT	40	6	26.7	0.008	0.040	3.7
1406 + 16	RT	40	6	26.7	0.008	0.040	3.7
1407 + 84	RT	20	6	13.3	0.004	0.020	1.9
1440 + 18	RT	10	6	6.7	0.002	0.010	0.9
1447 + 32	RT	40	6	26.7	0.008	0.040	3.7
1455 + 91	RT	30	6	20.0	0.006	0.030	2.8
1458 + 73	RT	70	6	46.7	0.015	0.070	6.5
1462 + 87	RT	35	6	23.3	0.007	0.035	3.3
1471 + 02	RT	25	6	16.7	0.005	0.025	2.3
ANTICIPATED				217.0	0.068	0.326	30.4
MAINLINE SUBTOTAL				1085.0	0.339	1.628	151.9
RAMPS @ REST AREA							
WB 36 + 48.7	OFF RAMP	313	10	125.6	0.039	0.188	17.6
RAMPS @ IL-161							
EB 310 + 05	RAMP C - 1/5 SHOULDER	196	8	174.2	0.055	0.261	24.4
EB 310 + 05	RAMP C - O/S SHOULDER	196	8	174.2	0.055	0.261	24.4
EB 313 + 67	RAMP C - 1/5 SHOULDER	117	10	130.0	0.041	0.195	18.2
EB 405 + 45	RAMP D	357	10	396.7	0.124	0.595	55.5
WB 105 + 03	RAMP A - O/S SHOULDER	503	8	447.1	0.140	0.671	62.6
WB 111 + 97	RAMP A - O/S SHOULDER	219	8	194.7	0.061	0.292	27.3
WB 205 + 89	RAMP B - O/S SHOULDER	578	8	513.8	0.161	0.771	71.9
ANTICIPATED				633.2	0.198	0.950	86.7
RAMP AREA SUBTOTAL				2789.4	0.873	4.164	390.5
GRAND TOTALS				3874.4	1.2	5.8	542.4



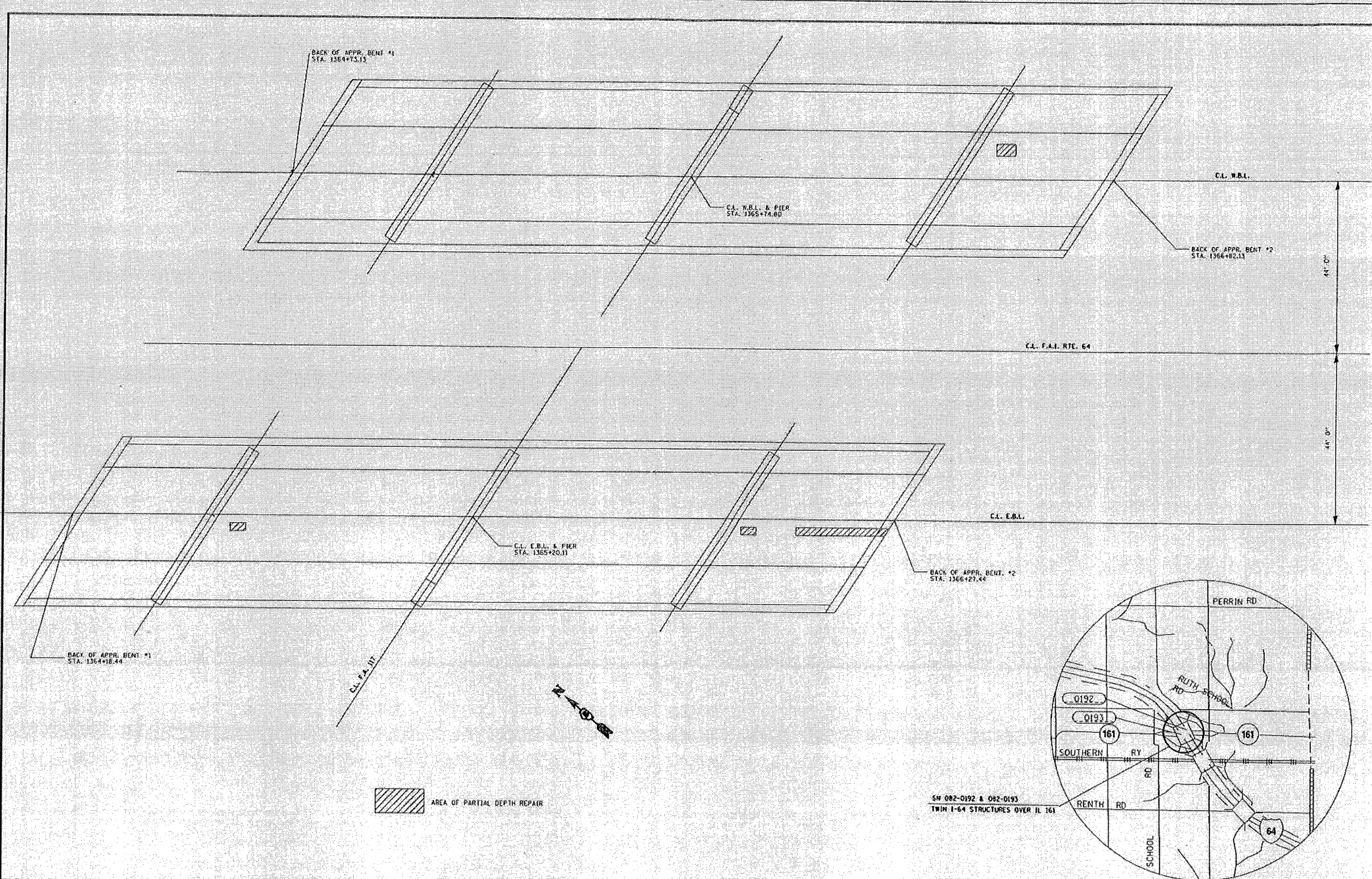
FILE NAME	USER NAME	DESIGNED	REVISED
#FILE#	#USER#	---	---
		DRAWN	REVISED
		---	---
		CHECKED	REVISED
		---	---
		DATE	REVISED
		---	---

**STATE OF ILLINOIS
DEPARTMENT OF TRANSPORTATION**

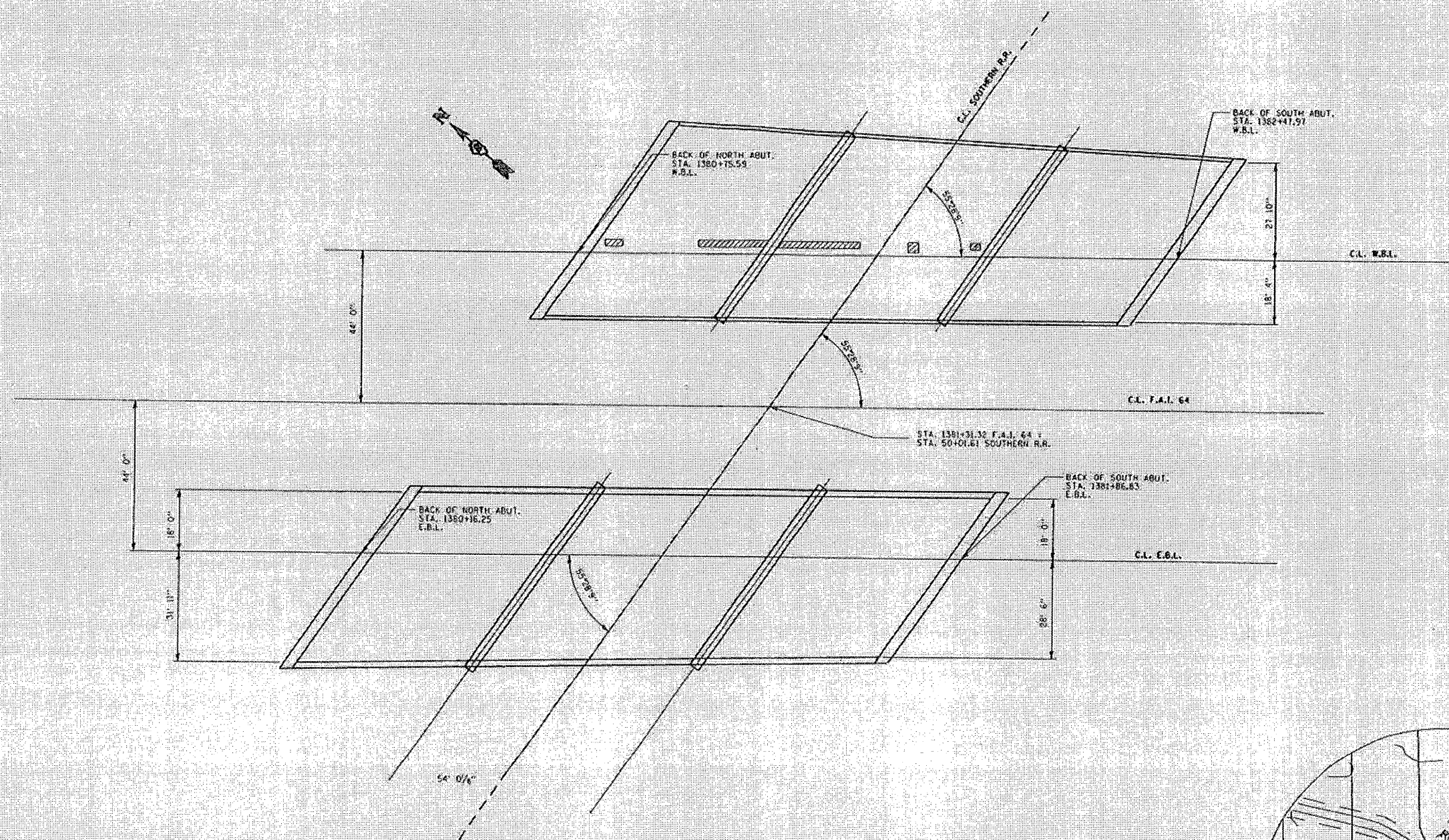
DETAIL LOCATION MAP


SCALE: 50' = 1" SHEET NO. OF SHEETS STA. TO STA.

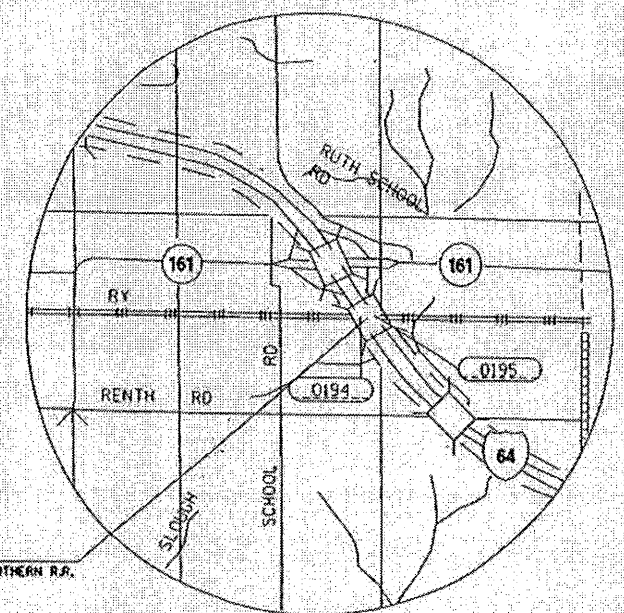
* ST. CLAIR & CLINTON COUNTIES			
F.A. RITE	SECTION	COUNTY	TOTAL SHEET NO.
1:64	82-18.9.1011	IL	1
FED. ROAD DIST. NO. ILLINOIS FED. AID PROJECT			CONTRACT NO. 16846



FILE NAME	USER NAME	DESIGNED	REVISED	STATE OF ILLINOIS DEPARTMENT OF TRANSPORTATION	BRIDGE PATCHING SN 082-192 & SN 082-0193	F.A.I. RTE.	SECTION	COUNTY	TOTAL SHEETS	SHEET NO.
PROJECT	DATE	DRAWN	REVISED			1-69	82-16.3.1011		71	8
PLAT SCALE	DATE	CHECKED	REVISED			CONTRACT NO. 76R46		ILLINOIS FED. AID PROJECT		
PLAT DATE	DATE	DATE	DATE	SCALE: 50' = 1"		SHEET NO. OF SHEETS		STA. TO STA.		



 AREA OF PARTIAL DEPTH REPAIR



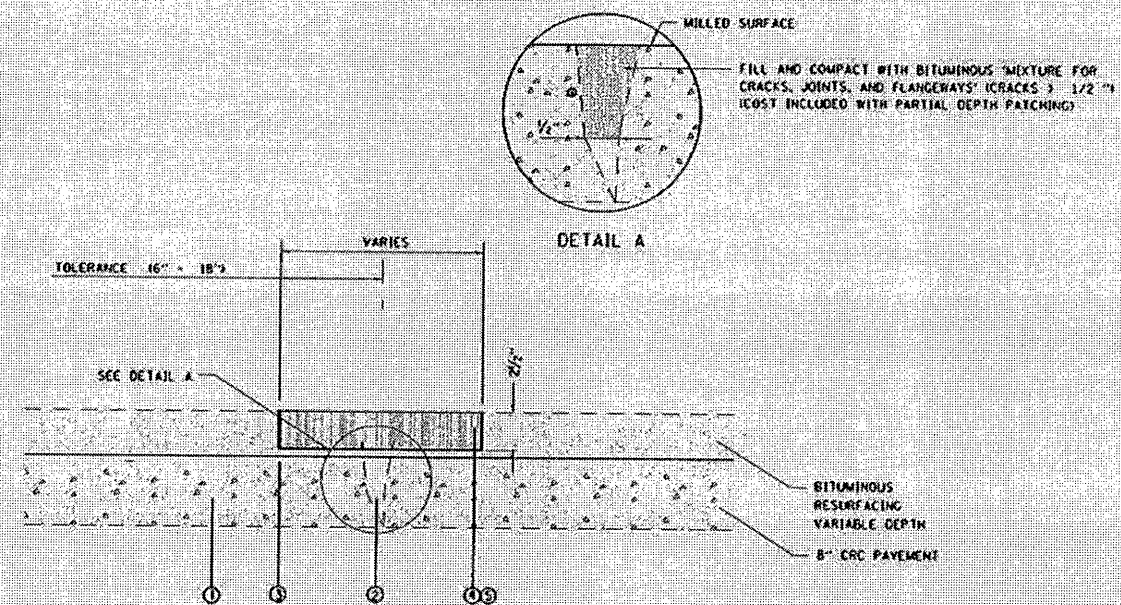
SN 082-0194 & 082-0195
1-64 STRUCTURES OVER NORFOLK SOUTHERN R.R.

FILE NAME =	USER NAME = AUSER1	DESIGNED -	REVISED -
FILE# =		DRAWN -	REVISED -
		CHECKED -	REVISED -
		DATE -	REVISED -

STATE OF ILLINOIS
DEPARTMENT OF TRANSPORTATION

BRIDGE PATCHING SN 082-192 & SN 082-0193







F.A. RTE:	SECTION	COUNTY	TOTAL SHEETS	SHEET NO.
1-64	02-18-2-101		31	3
SCALE: 50' = 1"			SHEET NO. OF SHEETS STA. TO STA.	
FED. ROAD DIST. NO. ILLINOIS FED. AID PROJECT			CONTRACT NO. 16846	

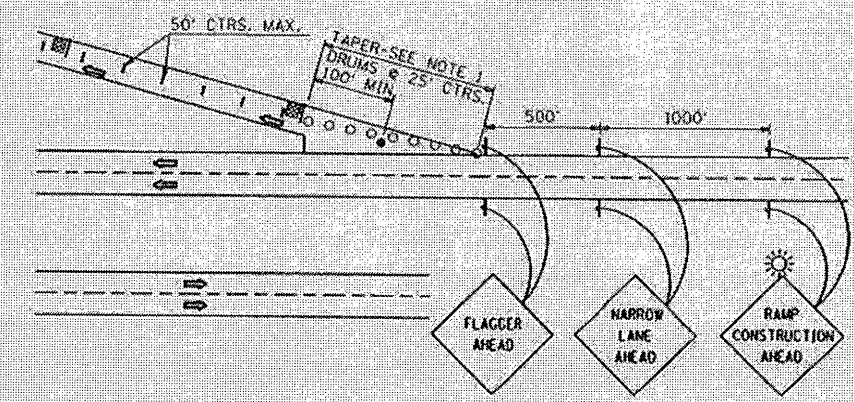


- LEGEND**
- ① EXISTING CRCP PAVEMENT, 8"
 - ② EXISTING LONGITUDINAL PAVEMENT CRACK
 - ③ EXISTING PAVEMENT REINFORCEMENT
 - ④ PROPOSED PARTIAL DEPTH REMOVAL, 2 1/2"
 - ⑤ PROPOSED PARTIAL DEPTH PATCHING





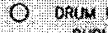

PARTIAL DEPTH PATCHING DETAIL

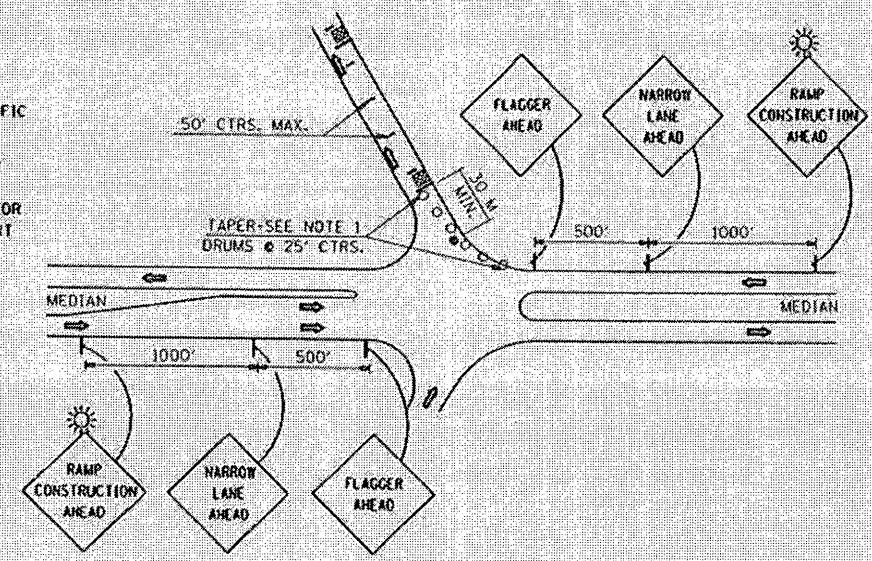
FILE NAME #	USER NAME = #USER#	DESIGNED -	REVISED -	STATE OF ILLINOIS DEPARTMENT OF TRANSPORTATION	PATCHING DETAIL	F.A. RTE.	SECTION	COUNTY	TOTAL SHEETS	SHEET NO.
FILE#	PLDT SCALE = #SCALE#	DRAWN -	REVISED -			1-64	82-18.9.1011		31	10
	PLDT DATE = #DATE#	CHECKED -	REVISED -			SCALE: 50:1:1	SHEET NO. OF SHEETS	STA. TO STA.	CONTRACT NO. 16846	
						* ST. CLAIR & CLINTON COUNTIES FED. ROAD DIST. NO. ILLINOIS FED. AID PROJECT				

- LEGEND**
-  PATCH
 -  FLAGGER WITH TRAFFIC CONTROL SIGN
 -  BARRICADE OR DRUM
 -  SIGN ON PORTABLE OR PERMANENT SUPPORT
 -  DRUM WITH STEADY BURNING LIGHT
 -  FLASHING LIGHTS

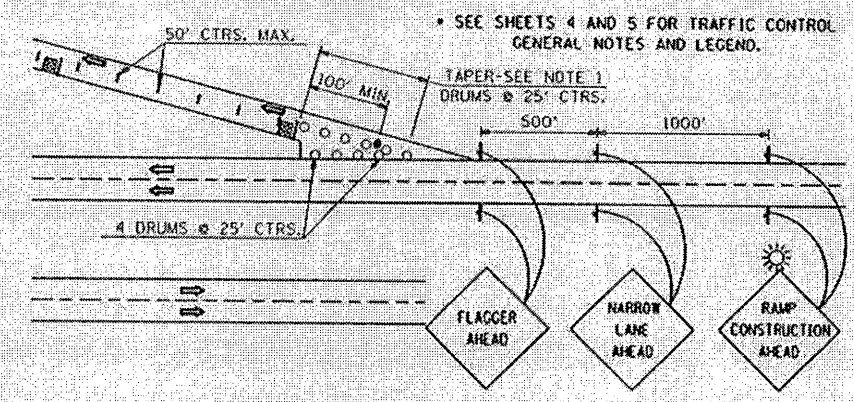


TYPICAL EXIT RAMP APPLICATION #1




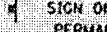


- LEGEND**
-  PATCH
 -  FLAGGER WITH TRAFFIC CONTROL SIGN
 -  BARRICADE OR DRUM
 -  SIGN ON PORTABLE OR PERMANENT SUPPORT
 -  DRUM WITH STEADY BURNING LIGHT
 -  FLASHING LIGHTS

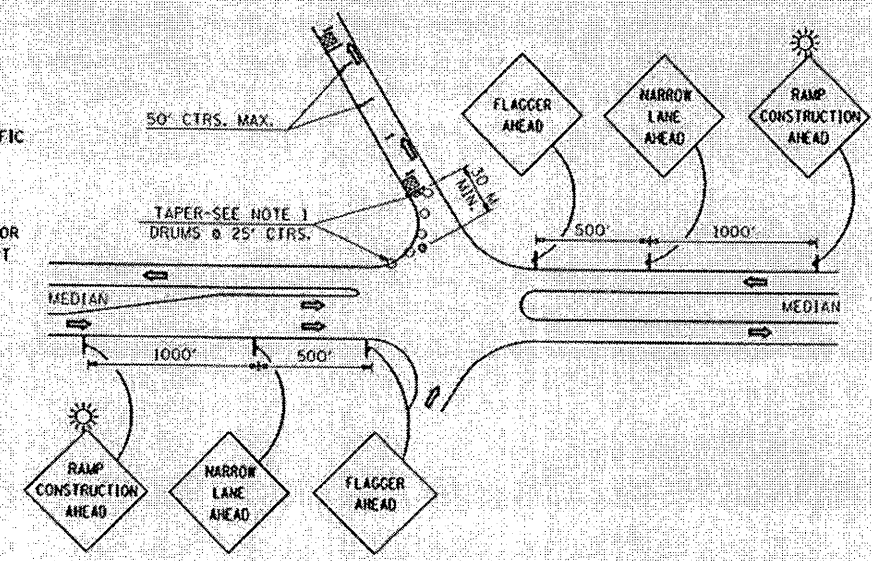


TYPICAL ENTRANCE RAMP APPLICATION #3
SEE SHEETS 4 AND 5 FOR TRAFFIC CONTROL GENERAL NOTES AND LEGEND



TYPICAL EXIT RAMP APPLICATION #2

- LEGEND**
-  PATCH
 -  FLAGGER WITH TRAFFIC CONTROL SIGN
 -  BARRICADE OR DRUM
 -  SIGN ON PORTABLE OR PERMANENT SUPPORT
 -  DRUM WITH STEADY BURNING LIGHT
 -  FLASHING LIGHTS



TYPICAL ENTRANCE RAMP APPLICATION #4
SEE SHEETS 4 AND 5 FOR TRAFFIC CONTROL GENERAL NOTES AND LEGEND

DESIGNED	---	REVISED	---
DRAWN	---	REVISED	---
CHECKED	---	REVISED	---
DATE	---	REVISED	---

STATE OF ILLINOIS
DEPARTMENT OF TRANSPORTATION

TRAFFIC CONTROL AND
PROTECTION SPECIAL

ST. CLAIR & CLINTON COUNTIES

F.A. RTE.	SECTION	COUNTY	TOTAL SHEETS	SHEET NO.
1:69	82-18.3.10H	IL	31	11
SCALE: 50.0' = 1" SHEET NO. OF SHEETS STA. TO STA.			CONTRACT NO. T6B46	
FED. ROAD DIST. NO. ILLINOIS FED. AID PROJECT				