

F.A.P. RTE.	SECTION	COUNTY	TOTAL SHEETS	SHEET NO.
788	27T-7	MADISON	9	1
FED. ROAD DIST. NO.		ILLINOIS	CONTRACT NO. 76B51	

INDEX OF SHEETS

- 1 COVER SHEET
- 2 GENERAL NOTES AND COMMITMENTS
- 3 SUMMARY OF QUANTITIES
- 4 SITE PLAN
- 5 WELL ENCLOSURE BOX AND WELL HEAD EXTENSION
- 6 DETAILS - PIEZOMETER & CONCRETE BOLLARD
- 7 ELECTRICAL PLAN SHEET
- 8 WELL ENCLOSURE ELECTRICAL DETAILS
- 9 DETAILS FOR EXISTING WELL ENCLOSURE BOXES

STANDARDS

- 000001-05
- 280001-04
- 602701-01
- 701101-01
- 701106-01
- 701601-05
- 701901

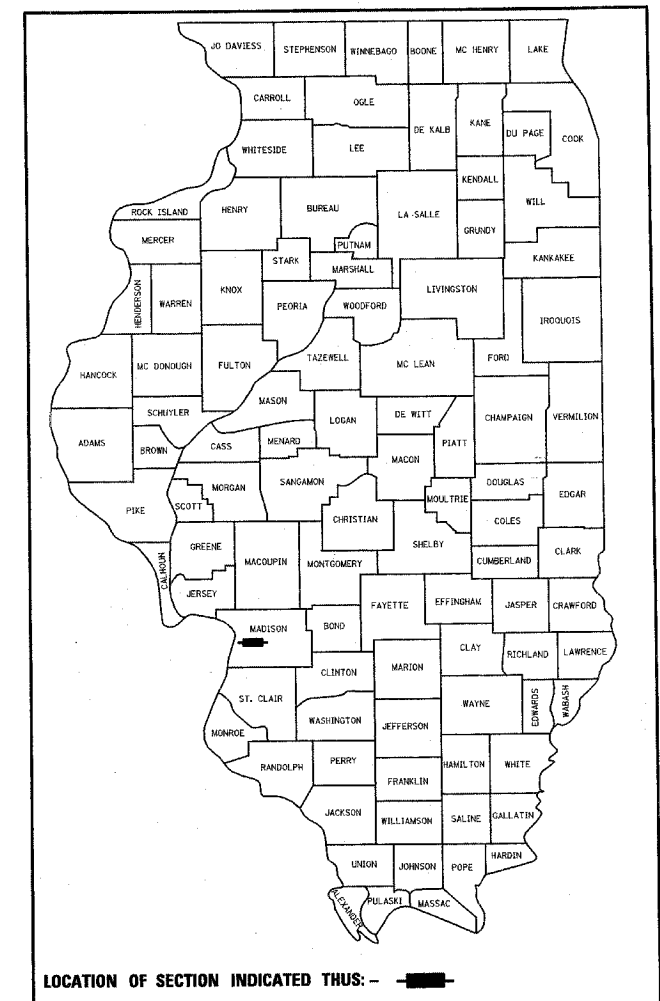
STATE OF ILLINOIS
DEPARTMENT OF TRANSPORTATION
DIVISION OF HIGHWAYS
PROPOSED
HIGHWAY PLANS

FAP ROUTE 788 (IL 003)
SECTION 27T-7

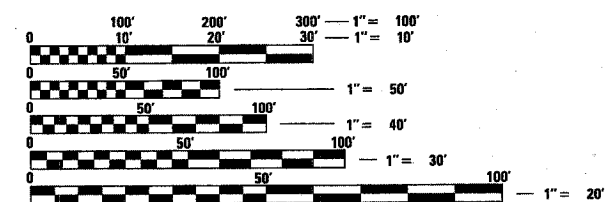
MADISON COUNTY

PUMP REPLACEMENT IN VENICE, ILLINOIS
C-98-015-08

D-98-023-08

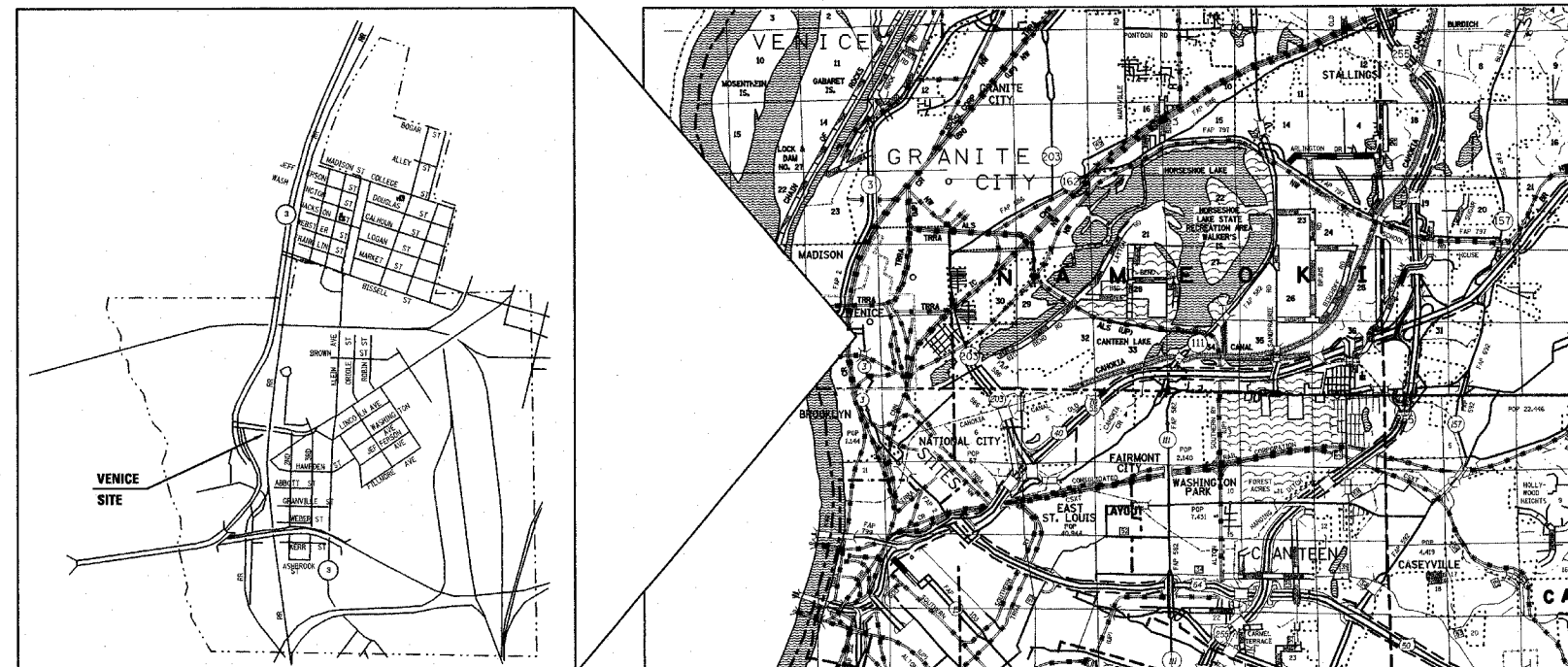


ADT	
2007	6000 (ACTUAL)
2008	6100 (ESTIMATED)
SU	9.2%
MU	7.5%

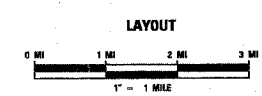


FULL SIZE PLANS HAVE BEEN PREPARED USING STANDARD ENGINEERING SCALES. REDUCED SIZED PLANS WILL NOT CONFORM TO STANDARD SCALES. IN MAKING MEASUREMENTS ON REDUCED PLANS, THE ABOVE SCALES MAY BE USED.

J.U.L.I.E.
 JOINT UTILITY LOCATION INFORMATION FOR EXCAVATION
 1-800-892-0123
 OR 811



GROSS LENGTH = 500'
 NET LENGTH = 500'



PROJECT ENGINEER: PATTI LEBEAU (346) 346-3179
 PROJECT MANAGER: BHARAT PATEL (618) 346-3190

CONTRACT NO. 76B51

STATE OF ILLINOIS
 DEPARTMENT OF TRANSPORTATION
 DIVISION OF HIGHWAYS

SUBMITTED March 21 2008

Mary C. Janie
 DEPUTY DIRECTOR OF HIGHWAYS, REGION ENGINEER

May 9, 2008
Eric E. Harn
 INTERIM ENGINEER OF DESIGN AND ENVIRONMENT

May 9, 2008
Christine M. Reed
 DIRECTOR OF HIGHWAYS, CHIEF ENGINEER

**PRINTED BY THE AUTHORITY
 OF THE STATE OF ILLINOIS**

GENERAL NOTES

1. PRIOR TO EXCAVATING AND/OR TRENCHING THE CONTRACTOR SHALL LOCATE ALL EXISTING DEPARTMENT OWNED UNDERGROUND FACILITIES INCLUDING ELECTRICAL CABLES AND WELL DISCHARGE PIPES. ANY DAMAGE TO THE FACILITIES BY THE CONTRACTOR'S OPERATIONS SHALL BE IMMEDIATELY REPAIRED BY THE CONTRACTOR TO THE SATISFACTION OF THE ENGINEER AT THE CONTRACTOR'S EXPENSE. A PAY ITEM HAS BEEN INCLUDED TO LOCATE UNDERGROUND CABLE, IT SHALL BE THE CONTRACTORS RESPONSIBILITY TO LOCATE THE DISCHARGE LINE.
2. COORDINATION WITH THE DEPARTMENT'S BUREAU OF OPERATIONS IS REQUIRED BEFORE ANY TRENCHING SHALL BE DONE TO LOCATE HIGHWAY LIGHTING / PUMP STATION / INTELLIGENT TRANSPORTATION SYSTEM FACILITIES AND TO COORDINATE OTHER FIELD ACTIVITIES. THE CONTRACTOR SHALL CONTACT (IDOT) PETE SAWYER AT (618) 304-2082 BEFORE COMMENCING WORK.
3. ILLINOIS STATE LAW REQUIRES A 48-HOUR NOTICE TO BE GIVEN TO UTILITIES BEFORE DIGGING. FIELD MARKING OF FACILITIES MAY BE OBTAINED BY CONTACTING J.U.L.I.E. OR FOR NON-MEMBERS, THE UTILITY COMPANY DIRECTLY. AGENCIES KNOWN TO HAVE FACILITIES WITHIN THE PROJECT AREA ARE AS FOLLOWS:

- AMEREN IP - GAS & ELECTRIC
- AT&T ILLINOIS - COMMUNICATIONS
- CENTER POINT ENERGY - GAS TRANSMISSION
- CHARTER COMMUNICATIONS, INC. - CABLE TV
- CITY OF VENICE - SANITARY SEWER
- CONSOLIDATED COMMUNICATION- COMMUNICATIONS
- ILLINOIS AMERICAN WATER CO. - WATER
- LEVEL 3 COMMUNICATIONS, LLC - COMMUNICATIONS
- QWEST COMMUNICATIONS- COMMUNICATIONS
- SPRINT/NEXTEL COMMUNICATIONS CO. - COMMUNICATIONS
- VERIZON BUSINESS - COMMUNIATIONS
- 360 NETWORKS (USA) INC. - COMMUNICATIONS

(MEMBERS OF J.U.L.I.E. (800) 892-0123 ARE INDICATED BY *. NON- J.U.L.I.E. MEMBERS MUST BE NOTIFIED DIRECTLY.)

4. ALL 7 PUMPS SHALL BE AVAILABLE FOR USE DURING HIGH WATER. THE ENGINEER WILL DETERMINE NUMBER OF PUMPS REQUIRED TO DEWATER. A TYPICAL DATE FOR LOW WATER IS JULY, 1, HOWEVER, THE CONTRACTOR SHALL TAKE INTO ACCOUNT THE UNPREDICTABILITY OF THE WEATHER, AND NO ADDITIONAL COMPENSATION WILL BE ALLOWED. THE ENGINEER WILL DETERMINE WHEN LOW WATER HAS BEEN OBTAINED.
5. A MINIMUM OF 4 PUMPS SHALL BE AVAILABLE FOR USE AT ALL TIMES. THE ENGINEER WILL DETERMINE THE NUMBER OF PUMPS REQUIRED TO DEWATER. SEE SPECIAL PROVISION MINIMUM DEWATERING REQUIREMENTS.
6. THE EXISTING PUMPS AND MOTORS SHALL BE SALVAGED AND WILL BECOME THE PROPERTY OF THE STATE. THE CONTRACTOR SHALL DELIVER THEM TO THE VENICE PUMP STATION. REMOVAL OF THE EXISTING PUMPS/MOTORS SHALL BE INCLUDED IN THE PAY ITEM SUBMERSIBLE TURBINE PUMP TYPE 1.
7. ALL MANHOLE LIDS AND RISERS SHALL REMAIN THE PROPERTY OF THE STATE. THE CONTRACTOR SHALL DELIVER THESE TO THE TRAFFIC MAINTENANCE BUILDING AT 9601 ST. CLAIR AVE., FAIRVIEW HEIGHTS. PLEASE CONTACT PETE SAWYER FOR A TIME AND DATE (618-304-2082).
8. TRAFFIC CONTROL STANDARD 701601 IS TO BE USED TO TRENCH NEW CONDUIT TO PUMPS 3, 4, 5, AND 6A, DUE TO THE LIMITED AREA BETWEEN THE RAILROAD ABUTMENT AND EDGE OF PAVEMENT. THIS PAY ITEM WILL BE DEDUCTED FROM THE CONTRACT IF NOT NEEDED.
9. RAILROAD FLAGMEN WILL BE REQUIRED AND SHALL BE PAID FOR IN ACCORDANCE WITH ARTICLE 107.12.
10. B.M. AT RAILROAD SPIKE IN P.P. EAST OF PUMP STATION ELEV. 411.36.
11. THE CONTRACTOR SHALL CHECK AND VERIFY ALL DIMENSIONS THAT ARE ON THE PLANS PRIOR TO ORDERING ANY MATERIAL.

COMMITMENTS

THE CONTRACTOR SHALL REMOVE AND DISPOSE REGULATED SUBSTANCES UNDER THE OTHER PROVISIONS OF THIS CONTRACT. SEE SPECIAL PROVISION "NON-SPECIAL WASTE WORKING CONDITION" FOR THE LIMITS OF NON-SPECIAL WASTE LOCATIONS.

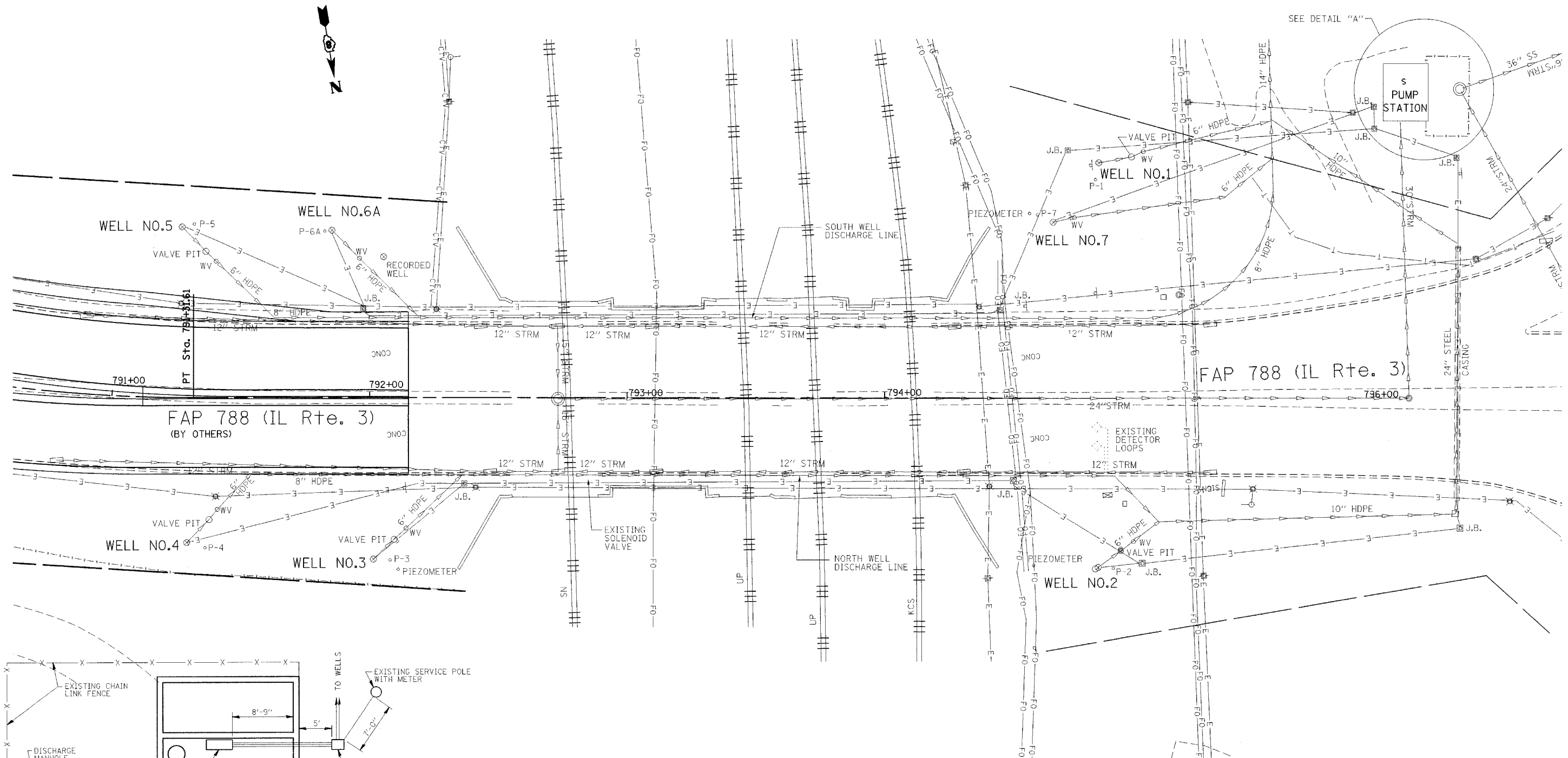
FILE NAME =	USER NAME = #USER#	DESIGNED -	REVISED -	STATE OF ILLINOIS DEPARTMENT OF TRANSPORTATION	GENERAL NOTES AND COMMITMENTS	F.A.P. RTE.	SECTION	COUNTY	TOTAL SHEETS	SHEET NO.	
*FILEL#		DRAWN -	REVISED -			788	27T-7	MADISON	9	2	
	PLOT SCALE = #SCALE#	CHECKED -	REVISED -			CONTRACT NO. 76B51					
	PLOT DATE = #DATE#	DATE -	REVISED -			SCALE:	SHEET NO. 2 OF	SHEETS	STA.	TO STA.	FED. ROAD DIST. NO.

SUMMARY OF QUANTITIES

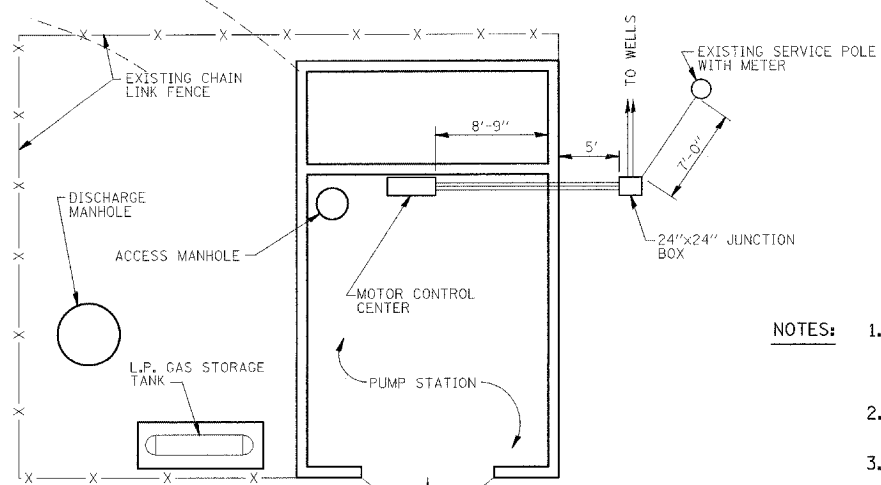
SUMMARY OF QUANTITIES			CONSTRUCTION TYPE CODE			
CODE NO	ITEM	UNIT	TOTAL QUANTITIES	Y007 STATE-100%		
25000200	SEEDING, CLASS 2	ACRE	0.25	0.25		
25100105	MULCH, METHOD 1	ACRE	0.25	0.25		
28000250	TEMPORARY EROSION CONTROL SEEDING	POUND	50	50		
60266500	VALVE VAULTS TO BE REMOVED	EACH	7	7		
*66900200	NON-SPECIAL WASTE DISPOSAL	CU YD	54	54		
*66900450	SPECIAL WASTE PLANS AND REPORT	L SUM	1	1		
*66900530	SOIL DISPOSAL ANALYSIS	EACH	1	1		
67000400	ENGINEER'S FIELD OFFICE, TYPE A	CAL MO	6	6		
67100100	MOBILIZATION	L SUM	1	1		
70102630	TRAFFIC CONTROL AND PROTECTION, STANDARD 701601	L SUM	1	1		
80300100	LOCATING UNDERGROUND CABLE	FOOT	1000	1000		
81019000	CONDUIT PUSHED, 5" DIA., GALVANIZED STEEL	FOOT	250	250		
81306200	DRILL EXISTING JUNCTION BOX	EACH	7	7		
81603075	UNIT DUCT, 600V, 3-1C NO.2, 1/C NO.2 GROUND, (XLP-TYPE USE), 1 1/4" DIA. POLYETHYLENE	FOOT	770	770		
81603115	UNIT DUCT, 600V, 3-1C NO.1, 1/C NO.1 GROUND, (XLP-TYPE USE), 2" DIA. POLYETHYLENE	FOOT	3015	3015		
81900200	TRENCH AND BACKFILL FOR ELECTRICAL WORK	FOOT	1050	1050		
X0320903	CIRCUIT BREAKER AND ENCLOSURE	EACH	7	7		
X0322618	SUBMERSIBLE TURBINE PUMP TYPE 1	EACH	7	7		
X0322628	FILL EXISTING PIEZOMETER	EACH	7	7		
X0322629	WELL ENCLOSURE BOX	EACH	7	7		
X0322631	WELL HEAD EXTENSION	EACH	7	7		
XX001290	CONCRETE BOLLARDS	EACH	42	42		
Z0040000	PIEZOMETERS	EACH	7	7		
Z0048665	RAILROAD PROTECTIVE LIABILITY INSURANCE	L SUM	1	1		

* SPECIALTY ITEMS

FILE NAME =	USER NAME = #USER#	DESIGNED -	REVISED -	STATE OF ILLINOIS DEPARTMENT OF TRANSPORTATION	SUMMARY OF QUANTITIES			F.A.P. RTE. 788	SECTION 27T-7	COUNTY MADISON	TOTAL SHEETS 9	SHEET NO. 3		
#FILEL#		DRAWN -	REVISED -					CONTRACT NO. 76B51						
		CHECKED -	REVISED -											
		DATE -	REVISED -											
							SCALE: 1/50		SHEET NO. 3 OF		SHEETS STA. TO STA.		FED. ROAD DIST. NO. ILLINOIS FED. AID PROJECT	

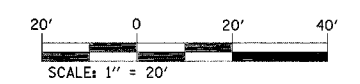


SEE DETAIL "A"

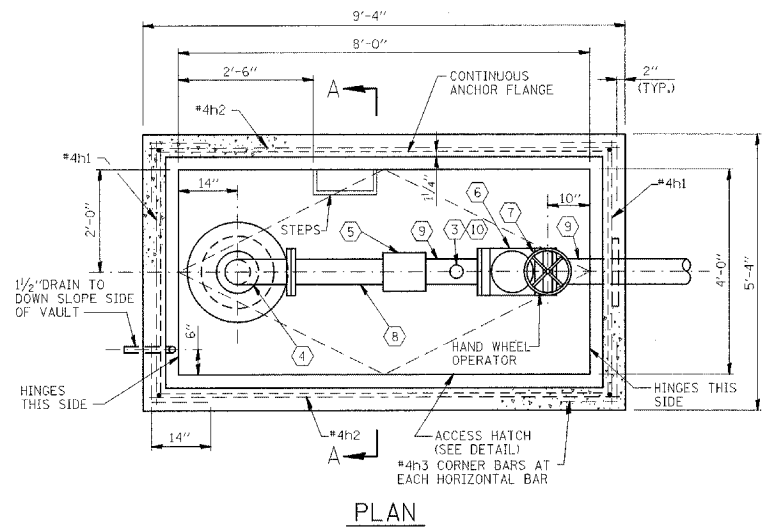


DETAIL "A"
N.T.S.

- NOTES:**
1. ALL (7) EXISTING WELLS ARE TO BE REMOVED, INCLUDING EXTENDED WELL CASING AND RISER PIPES, REMOVAL OF EXISTING VAULT TOPS AND SIDES, FILLING EXISTING VAULTS, NEW PUMPS/MOTORS, AND NEW CONDUITS/WIRES TO ALL (7) WELLS.
 2. NEW PIEZOMETERS SHALL BE CONSTRUCTED WITHIN 5 FOOT RADIUS FROM EACH WELL.
 3. ALL (7) EXISTING PIEZOMETERS SHALL BE SEALED. EXISTING VALVE PITS AND GATE VALVES (WV) SHALL BE REMOVED



FILE NAME =	USER NAME = potelbw	DESIGNED -	REVISED -	STATE OF ILLINOIS DEPARTMENT OF TRANSPORTATION	SITE PLAN			F.A.P. RTE. 788	SECTION 27T-7	COUNTY MADISON	TOTAL SHEETS 9	SHEET NO. 4
c:\projects\ed02308\electrical\sp\in\023083test.dgn	3test.dgn	DRAWN -	REVISED -		SCALE:	SHEET NO.	OF SHEETS	STA.	TO STA.	FED. ROAD DIST. NO.	ILLINOIS FED. AID PROJECT	CONTRACT NO. 76B51
	PLOT SCALE = 20,0000' / IN.	CHECKED -	REVISED -									
	PLOT DATE = 3/19/2008	DATE -	REVISED -									



LEGEND

- ① 16" 304L SS CASING EXTENSION, FLANGED (SEE NOTE 2)
- ② 6" 304L SS PIPE EXTENSION, FLANGED
- ③ AIR/VAC VALVE WITH ISOLATING BALL VALVE
- ④ REUSE EXISTING WELL HEAD
- ⑤ 6" SS COUPLING 10" LENGTH
- ⑥ 6" SWINGFLEX CHECK VALVE
- ⑦ 6" KNIFE GATE VALVE (TILT AS REQUIRED)
- ⑧ 6" SS PIPE & FLANGE x PE
- ⑨ 6" 304L SS PIPE & FLANGES
- ⑩ 1" 304L SS NIPPLE WELDED TO 6" SS PIPE
- ⑪ 6" 304L SS 45° ELBOW
- ⑫ EXISTING 6" HDPE FORCE MAIN BRANCH PIPE
- ⑬ 6" SS REPAIR CLAMP, 24" LENGTH

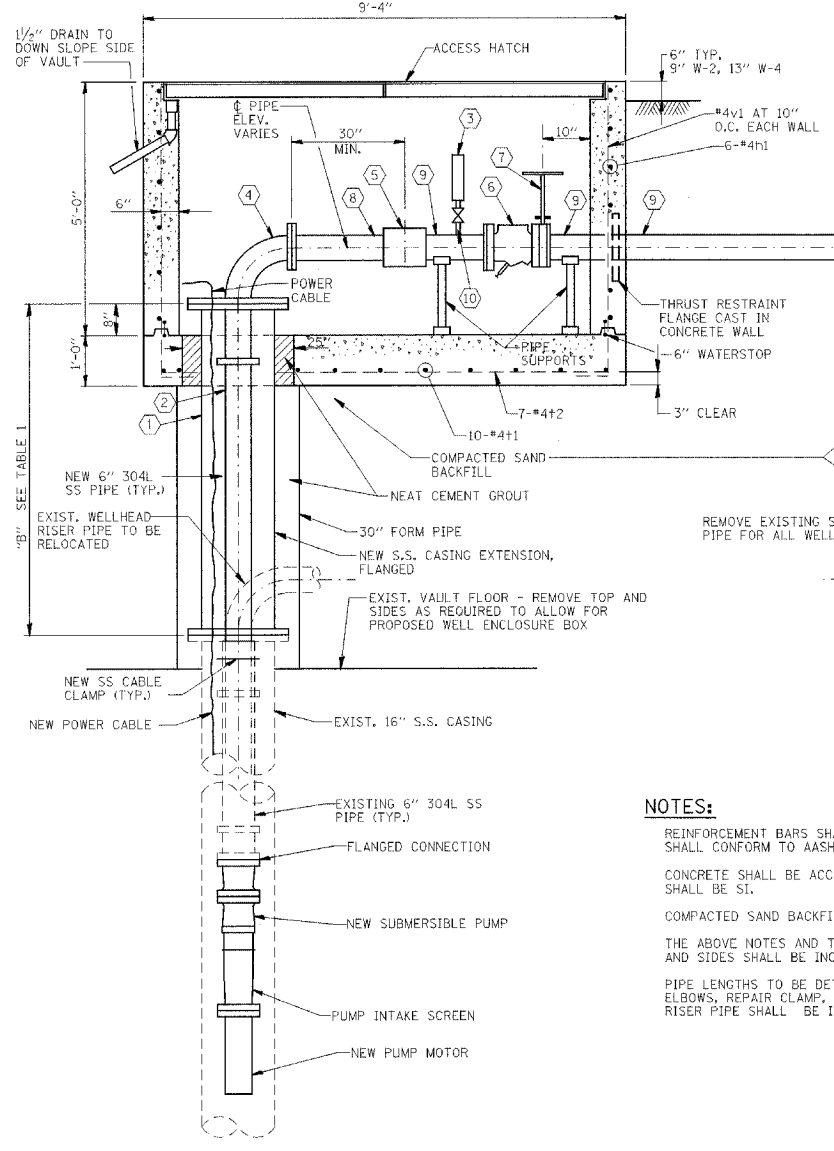
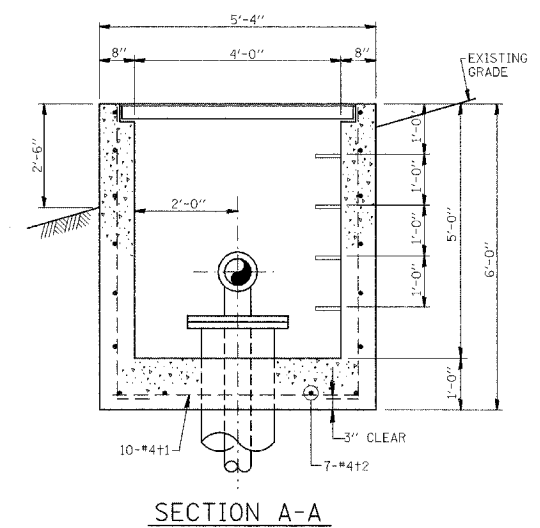
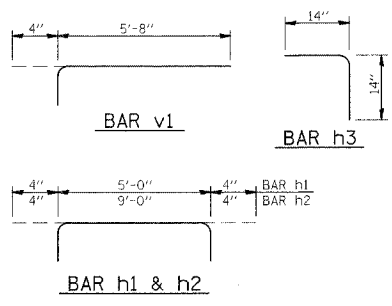
- NOTES:**
1. BOLTS, NUTS & WASHERS SHALL BE 304L SS.
 2. CASING EXTENSION FLANGE SHALL MATCH EXISTING CASING FLANGE BOLT HOLE PATTERN.

TABLE 1
WELL MODIFICATIONS AND NEW WELL ENCLOSURE BOX

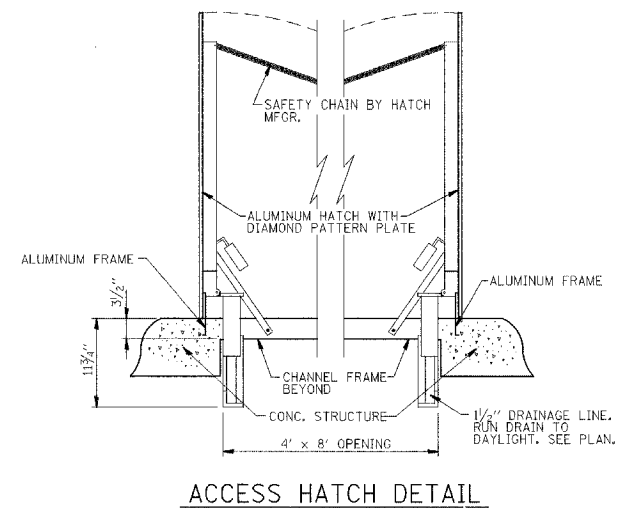
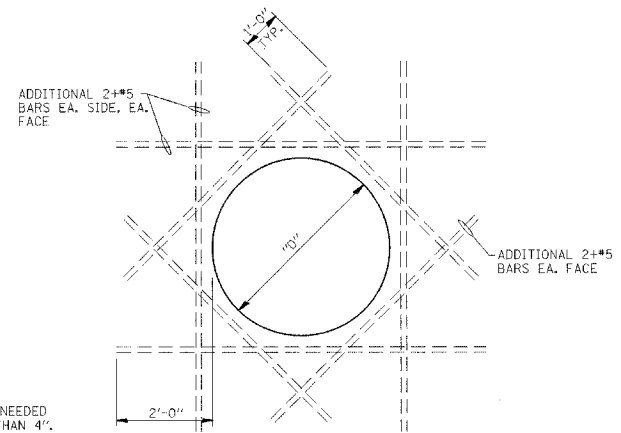
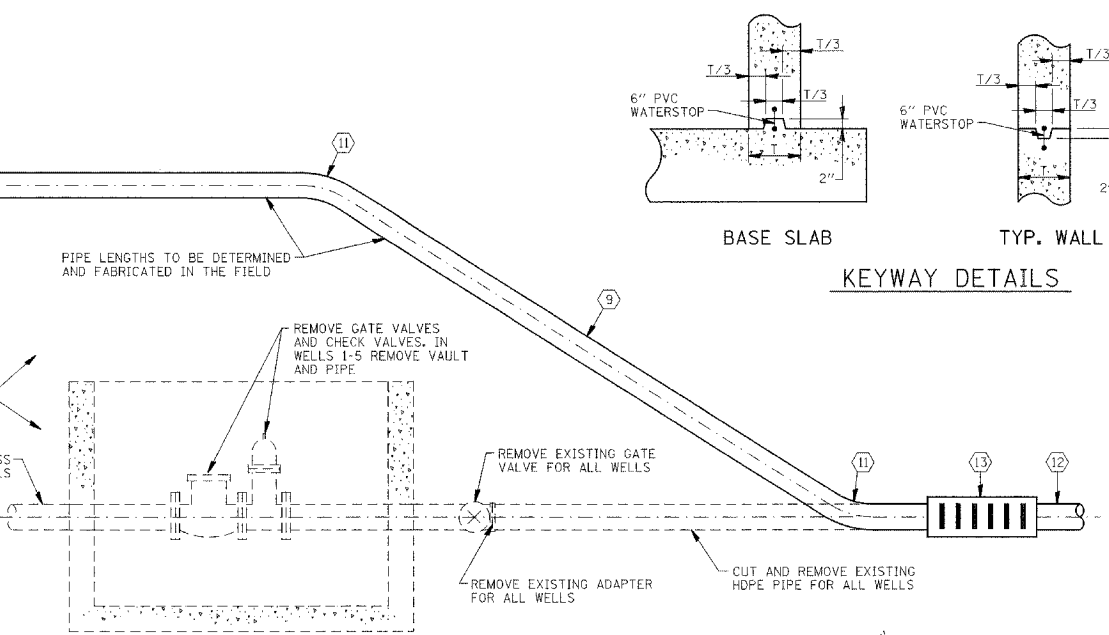
WELL NO.	EXTENSION OF CASING AND DISCHARGE PIPE "B"	WELL HEAD EXTENSION	WELL ENCLOSURE BOX
W-1	26"	1	1
W-2	18"	1	1
W-3	23"	1	1
W-4	18"	1	1
W-5	33"	1	1
W-6A	43"	1	1
W-7	58"	1	1
TOTAL		7	7

WELL ENCLOSURE BOX BILL OF MATERIALS

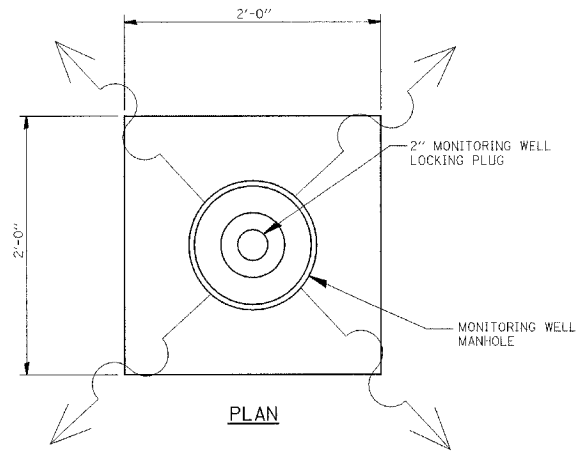
BAR NO.	SIZE	LENGTH	REINFORCEMENT BARS	CONCRETE STRUCTURES
v1	3/4"	4	34	4
h1	1/2"	4	12	4
h2	1/2"	4	12	4
h3	1/2"	4	24	4
t1	1/2"	4	10	4
t2	1/2"	4	7	4
REINFORCEMENT BARS		lbs	375	
CONCRETE STRUCTURES		yds	5.25	



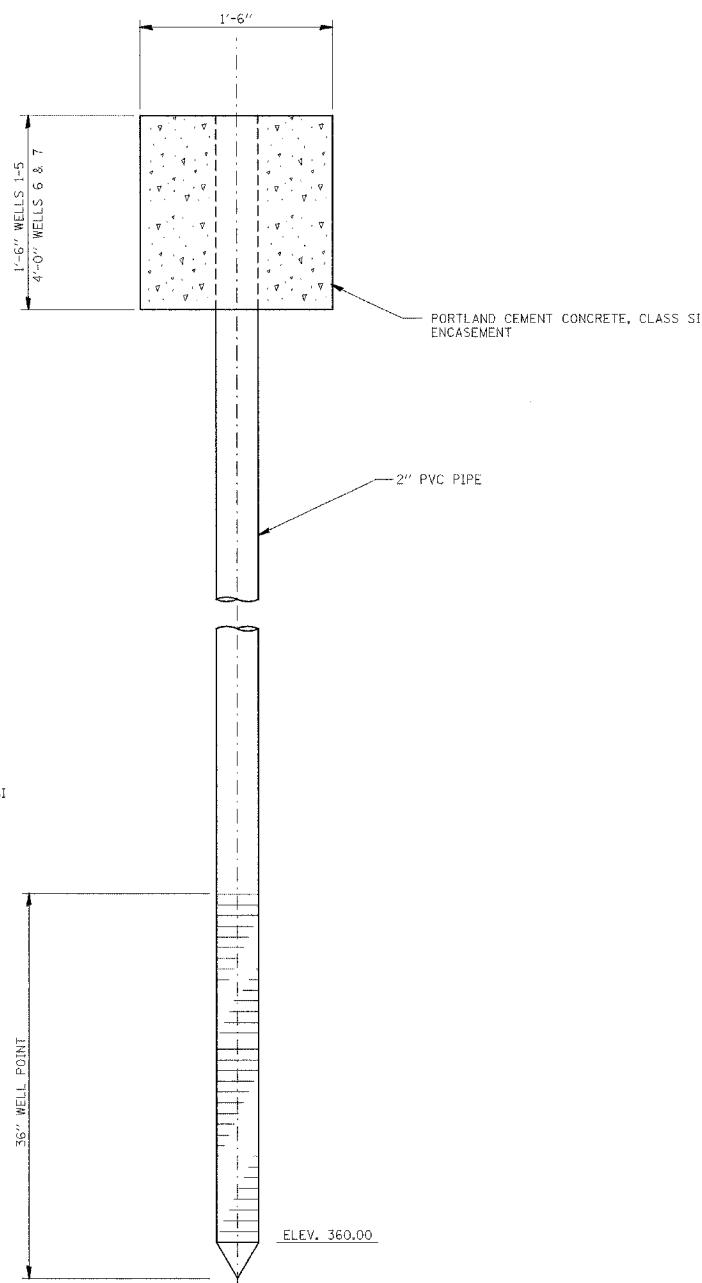
- NOTES:**
- REINFORCEMENT BARS SHALL BE ACCORDING TO SECTION 508 AND SHALL CONFORM TO AASHTO M-31, M-42, OR M-53 GRADE 60.
 - CONCRETE SHALL BE ACCORDING TO SECTION 503 AND THE CLASS SHALL BE S1.
 - COMPACTED SAND BACKFILL SHALL BE ACCORDING TO SECTION 207.
 - THE ABOVE NOTES AND THE REMOVAL OF THE EXISTING VAULTS TOPS AND SIDES SHALL BE INCLUDED IN THE PAY ITEM WELL ENCLOSURE BOX.
 - PIPE LENGTHS TO BE DETERMINED IN THE FIELD BY THE CONTRACTOR. ELBOWS, REPAIR CLAMP, PIPE SUPPORTS, AND RELOCATED WELL HEAD RISER PIPE SHALL BE INCLUDED IN THE PAY ITEM WELL HEAD EXTENSION.



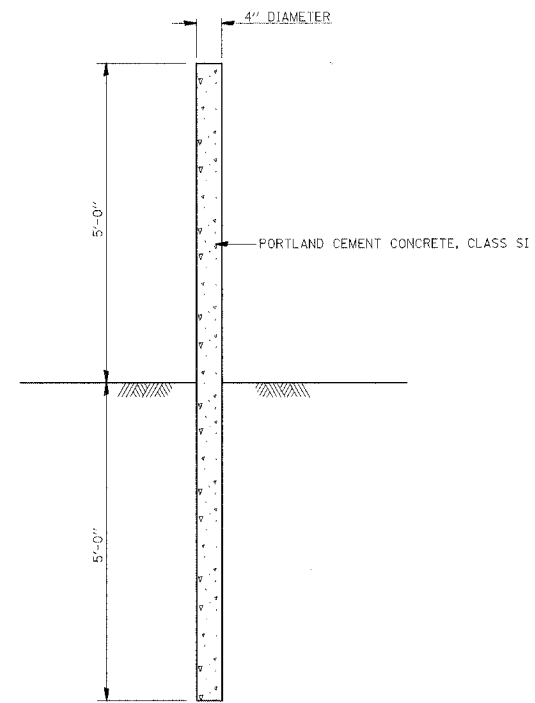
* NO ADDITIONAL REINFORCEMENT NEEDED FOR PIPE PENETRATIONS LESS THAN 4"



PLAN



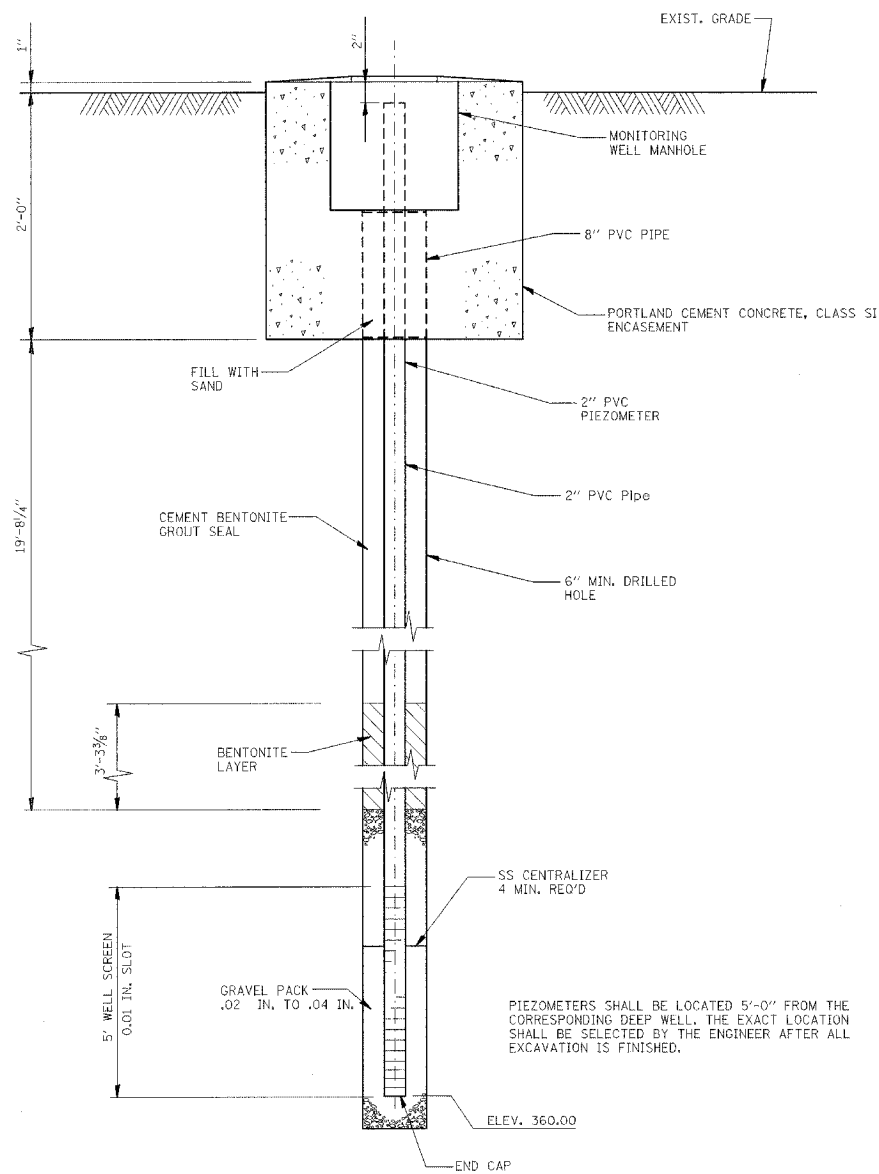
DETAIL OF EXIST. DRAINAGE WELL PIEZOMETER
N.T.S.



DETAIL OF CONCRETE BOLLARD
N.T.S.

NOTES:

SIX (6) CONCRETE BOLLARDS WILL BE REQUIRED TO PROTECT EACH WELL ENCLOSURE BOX.
1 BOLLARD ON EACH CORNER AND 1 BOLLARD IN THE CENTER OF EACH LONG SIDE. ACTUAL LOCATIONS IS TO BE DETERMINED IN FIELD BY THE ENGINEER.



PROFILE
DETAIL OF NEW PIEZOMETER
N.T.S.

PIEZOMETERS SHALL BE LOCATED 5'-0" FROM THE CORRESPONDING DEEP WELL. THE EXACT LOCATION SHALL BE SELECTED BY THE ENGINEER AFTER ALL EXCAVATION IS FINISHED.

PORTLAND CEMENT CONCRETE, CLASS SI SHALL BE IN ACCORDANCE WITH THE ARTICLE 1020 OF THE STANDARD SPECIFICATIONS.

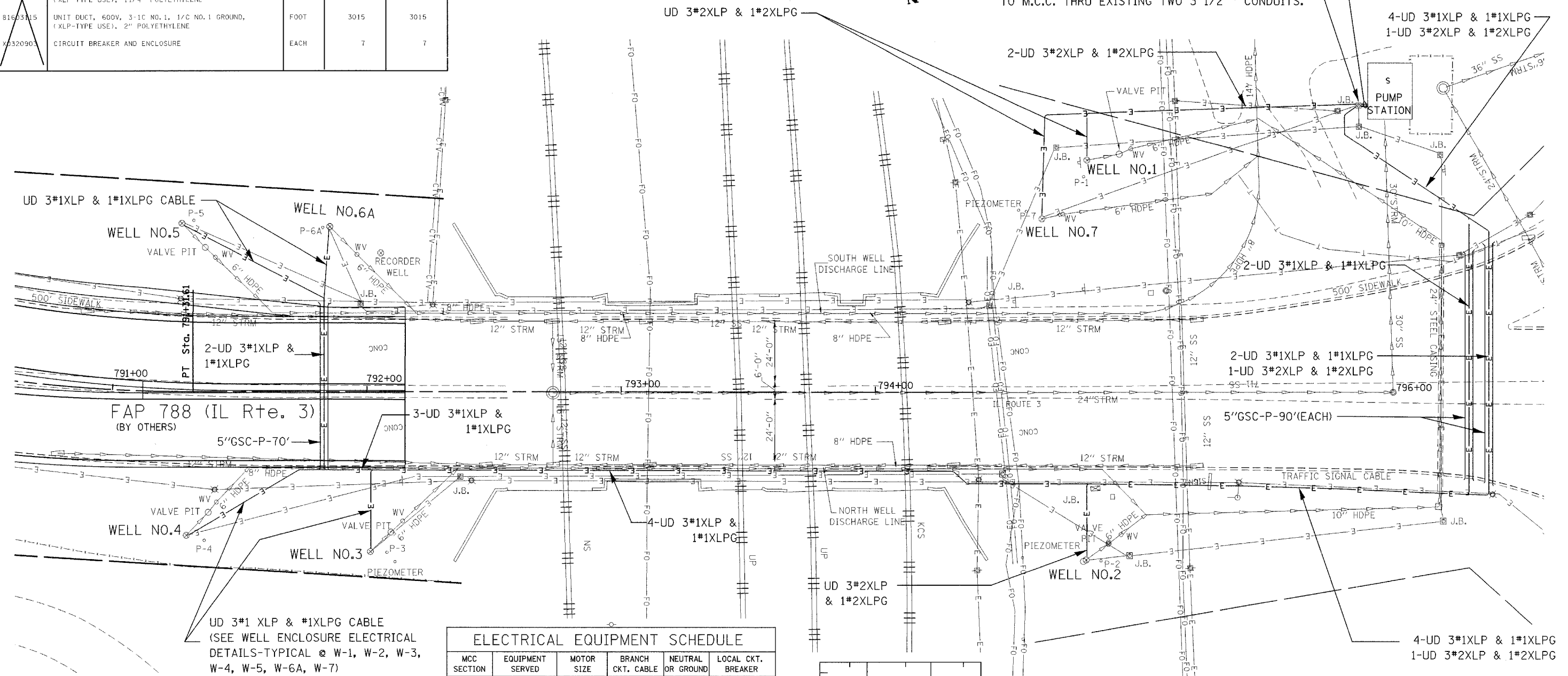
FILE NAME = \$FILEL\$	USER NAME = \$USER\$	DESIGNED -	REVISED -	STATE OF ILLINOIS DEPARTMENT OF TRANSPORTATION	DETAILS - PIEZOMETER & CONCRETE BOLLARD		F.A.P. RTE. 788	SECTION 2TT-7	COUNTY MADISON	TOTAL SHEETS 9	SHEET NO. 6
	PLOT SCALE = \$SCALE\$	DRAWN -	REVISED -				SCALE:	SHEET NO. 6 OF SHEETS	STA.	TO STA.	FED. ROAD DIST. NO.
	PLOT DATE = \$DATE\$	CHECKED -	REVISED -								
		DATE -	REVISED -								

SCHEDULE OF QUANTITIES

CODE NO	ITEM	UNIT	TOTAL QUANTITIES	IL 3 PUMP STATION
81019000	CONDUIT PUSHED, 5" DIA., GALVANIZED STEEL	FOOT	250	250
81306200	DRILL EXISTING JUNCTION BOX	EACH	7	7
81500200	TRENCH AND BACKFILL FOR ELECTRICAL WORK	FOOT	1050	1050
81603075	UNIT DUCT, 600V, 3-1C NO.2, 1/C NO.2 GROUND, (XLP-TYPE USE), 1 1/4" POLYETHYLENE	FOOT	770	770
81603115	UNIT DUCT, 600V, 3-1C NO.1, 1/C NO.1 GROUND, (XLP-TYPE USE), 2" POLYETHYLENE	FOOT	3015	3015
8320905	CIRCUIT BREAKER AND ENCLOSURE	EACH	7	7

DRILL EXISTING JUNCTION BOX (7 EACH)
 NOTE: INSTALL UNIT DUCT CABLES WITH WATER TIGHT CABLE FITTINGS AT THE JUNCTION BOX. IF NECESSARY, SEAL WATER TIGHT WITH EPOXY. REMOVE OUTER POLYETHYLENE JACKET AND FEED CONDUCTORS TO M.C.C. THRU EXISTING TWO 3 1/2" CONDUITS.

EXISTING CONDUITS 2-3 1/2" Ø
 (REMOVE EXISTING CABLES FROM CONDUITS)



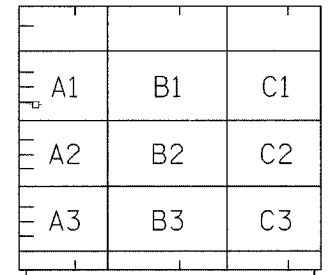
UD 3*1 XLP & #1XLPG CABLE
 (SEE WELL ENCLOSURE ELECTRICAL DETAILS-TYPICAL @ W-1, W-2, W-3, W-4, W-5, W-6A, W-7)

ELECTRICAL LEGEND

- PROPOSED ELECTRIC CABLE, SIZE AS SPECIFIED (UNDERGROUND)
- EXISTING ELECTRIC CABLE (UNDERGROUND)
- EXISTING JUNCTION BOX
- PROPOSED CONDUIT PUSHED, SIZE AS SPECIFIED, 'P' PUSHED.
- EXISTING LIGHT UNIT
- EXISTING SERVICE POLE
- J.B. JUNCTION BOX

ELECTRICAL EQUIPMENT SCHEDULE

MCC SECTION	EQUIPMENT SERVED	MOTOR SIZE	BRANCH CKT. CABLE	NEUTRAL OR GROUND	LOCAL CKT. BREAKER
A1	WELL #1	25 HP	3 #2	1 #2	70 AMP
A2	WELL #2	25 HP	3 #2	1 #2	70 AMP
A3	MAIN BREAKER	-	-	-	-
B1	WELL #3	25 HP	3 #1	1 #1	70 AMP
B2	WELL #4	25 HP	3 #1	1 #1	70 AMP
B3	BLANK	-	-	-	-
C1	WELL #5	25 HP	3 #1	1 #1	70 AMP
C2	WELL #6A	25 HP	3 #1	1 #1	70 AMP
C3	WELL #7	25 HP	3 #2	1 #2	70 AMP

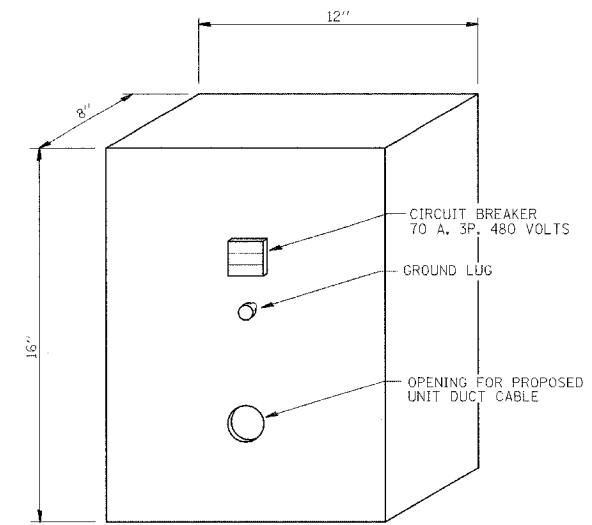
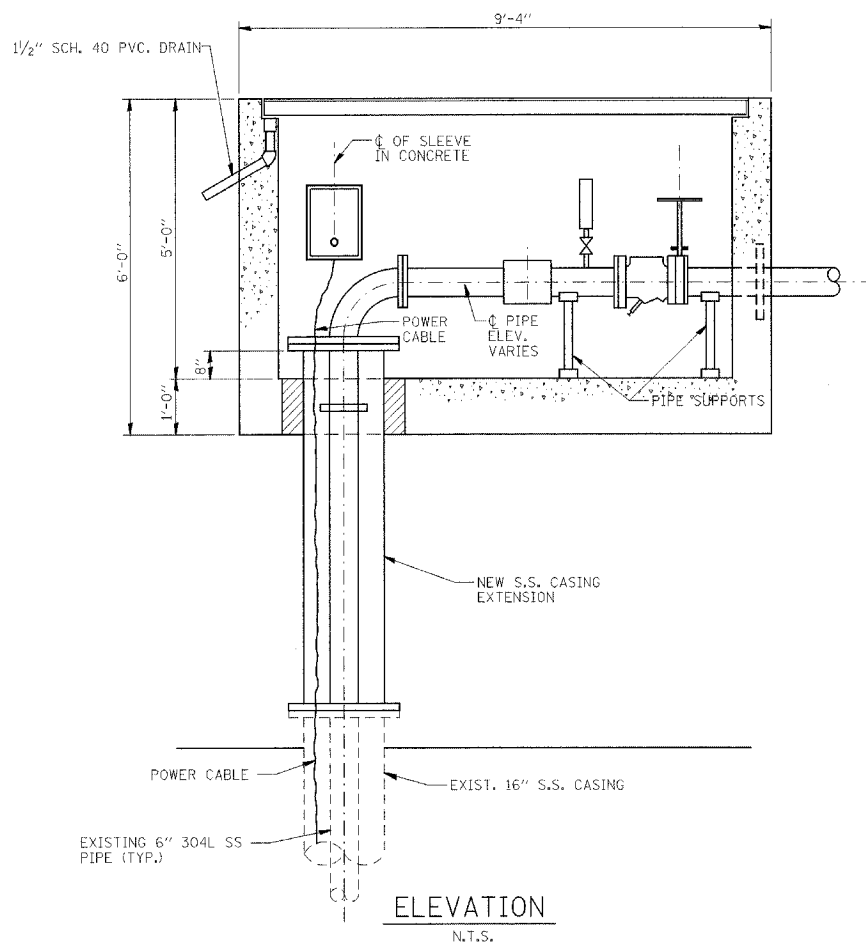
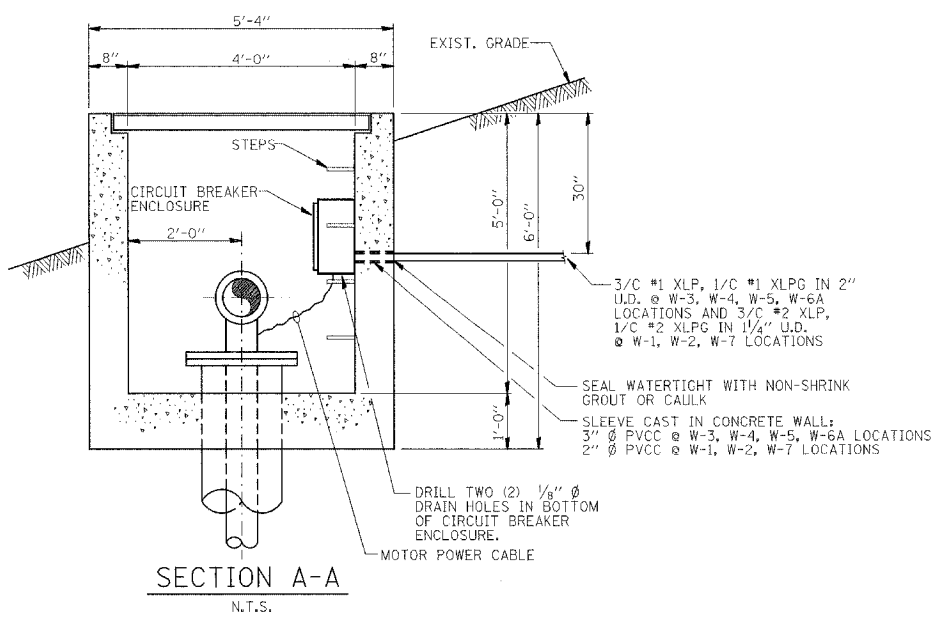
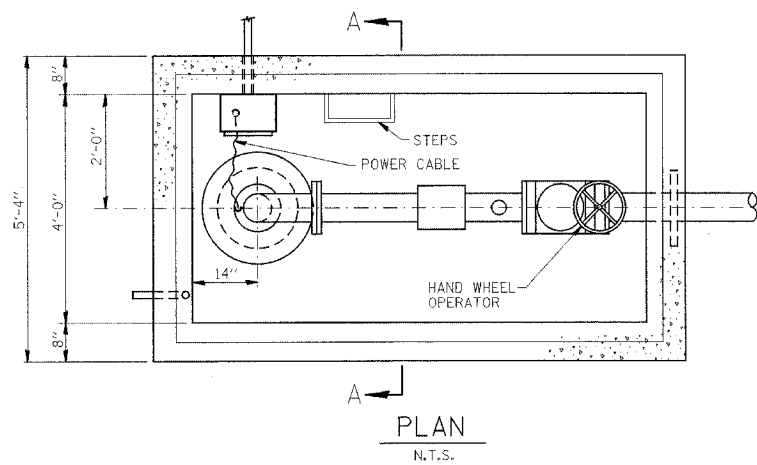


MOTOR CONTROL CENTER



NOTES: 1. THE TRENCH SHALL BE HAND DUG WHILE CROSSING DISCHARGE LINE AND /OR DIGGING OVER THE EXISTING CABLE. THE COST FOR HAND DUG TRENCHES SHALL BE INCLUDED IN THE PAY ITEM "TRENCH & BACKFILL FOR ELECTRIC WORK".

2. AN UNDERGROUND "CABLE MARKING TAPE" SHALL BE INSTALLED WITH ALL TRENCH & BACKFILL FOR ELECTRICAL WORK IN ACCORDANCE WITH THE ARTICLES 819.05 & 1066.05 OF THE STANDARD SPECIFICATIONS.

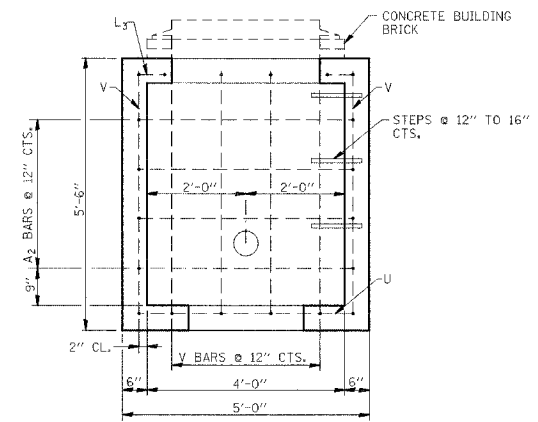
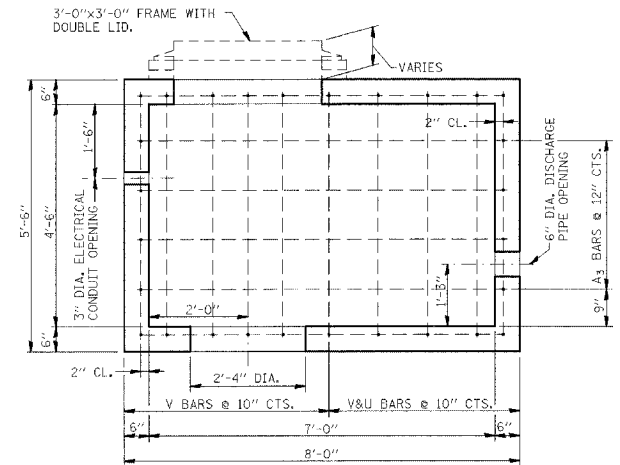
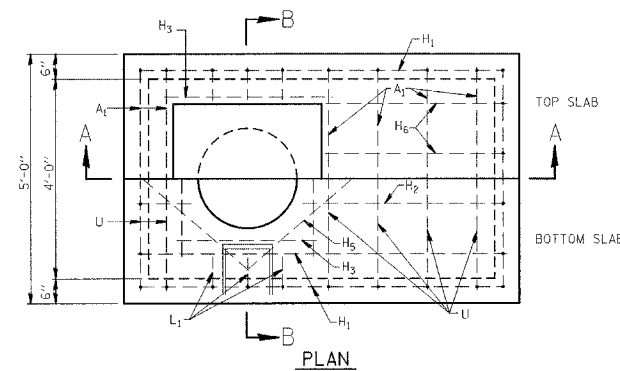


CIRCUIT BREAKER & ENCLOSURE LAYOUT
N.T.S.

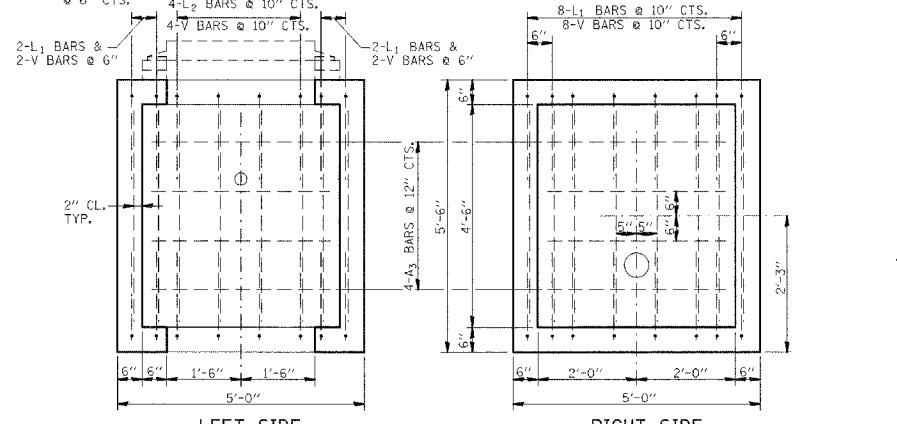
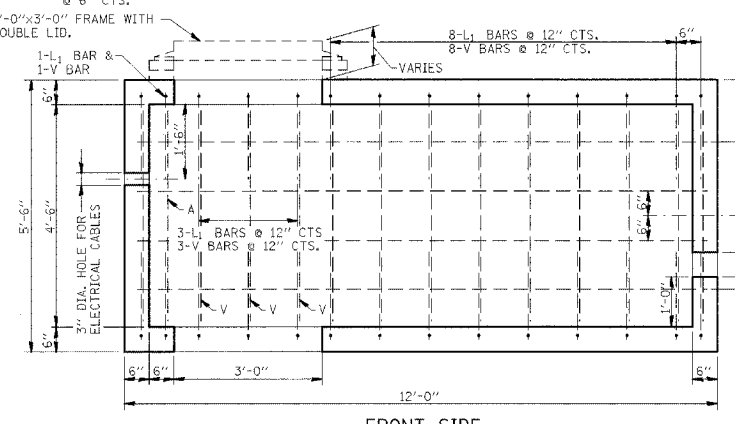
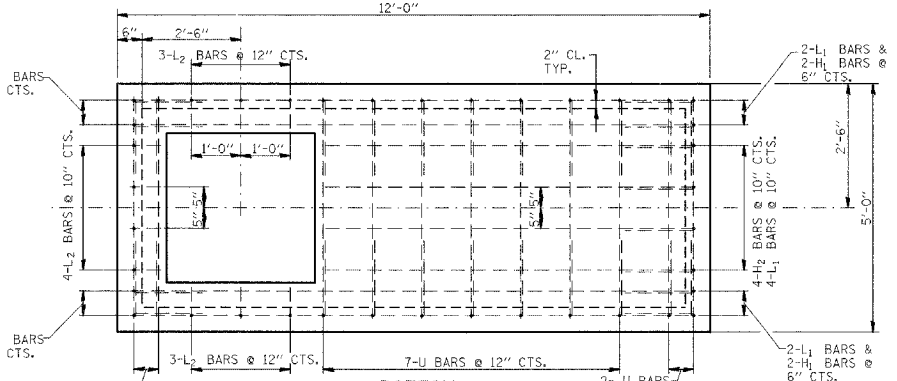
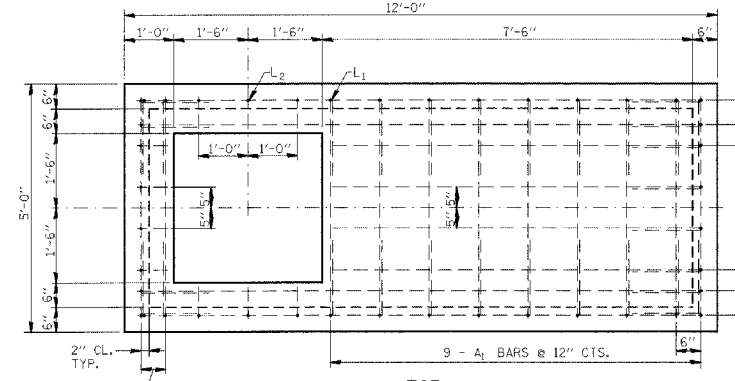
ELECTRICAL NOTES:

1. CIRCUIT BREAKER ENCLOSURE SHALL BE LOCATED INSIDE WELL ENCLOSURE ON THE LONG SIDE WHICH IS AT THE HIGHEST ELEVATION RELATIVE TO EXISTING GRADE.
2. CIRCUIT BREAKER ENCLOSURE SHALL BE STAINLESS STEEL NEMA 4X, SIZE 16"x12"x8" WITH PANEL AS SHOWN IN DETAIL.
3. CIRCUIT BREAKER ENCLOSURE SHALL BE MOUNTED SO THAT THERE IS AT LEAST 1/4" AIR SPACE BETWEEN IT AND THE WALL.

FILE NAME =	USER NAME = #USER#	DESIGNED -	REVISED -	STATE OF ILLINOIS DEPARTMENT OF TRANSPORTATION	WELL ENCLOSURE ELECTRICAL DETAILS				F.A.P. RTE. 788	SECTION 27T-7	COUNTY MADISON	TOTAL SHEETS 9	SHEET NO. 8
#FILEL#		DRAWN -	REVISED -						SCALE: SHEET NO. 8 OF SHEETS STA. TO STA.				CONTRACT NO. 76B51
		CHECKED -	REVISED -		FED. ROAD DIST. NO. ILLINOIS FED. AID PROJECT								
		DATE -	REVISED -										



EXISTING WELLS 1 - 5
N.T.S.



EXISTING WELLS 6A & 7
N.T.S.

NOTES:
ALL BARS ARE #4 BARS.

FILE NAME = #FILEL#	USER NAME = #USER#	DESIGNED -	REVISED -	STATE OF ILLINOIS DEPARTMENT OF TRANSPORTATION	DETAILS FOR EXISTING WELL ENCLOSURE BOXES			F.A.P. RTE. 788	SECTION 27T-7	COUNTY MADISON	TOTAL SHEETS 9	SHEET NO. 9			
	PLOT SCALE = #SCALE#	DRAWN -	REVISED -					SCALE:	SHEET NO. 9 OF	SHEETS	STA.	TO STA.	FED. ROAD DIST. NO.	(ILLINOIS) FED. AID PROJECT	CONTRACT NO. 76B51
	PLOT DATE = #DATE#	CHECKED -	REVISED -												
		DATE -	REVISED -												