

STATE OF ILLINOIS
DEPARTMENT OF TRANSPORTATION
DIVISION OF HIGHWAYS
**PROPOSED
HIGHWAY PLANS**

F.A.I. ROUTE 255/270
SECTION DIST 8 ITS 2009-1
PROJECT : ITS-0517(106)
MADISON COUNTY

**ITS COMMUNICATION, DETECTION AND SURVEILLANCE
DEVICES FROM I-255 STA. 1493+00, THEN NORTH TO
I-255+270, THEN EAST ON I-270 TO THE IL 157 RAMP
C-75-022-06**

F.A.I. RTE.	SECTION	COUNTY	TOTAL SHEETS	SHEET NO.
•	DIST 8 ITS 2009-1	MADISON	28	1
FED. ROAD DIST. NO.	ILLINOIS	CONTRACT NO. 76B53		

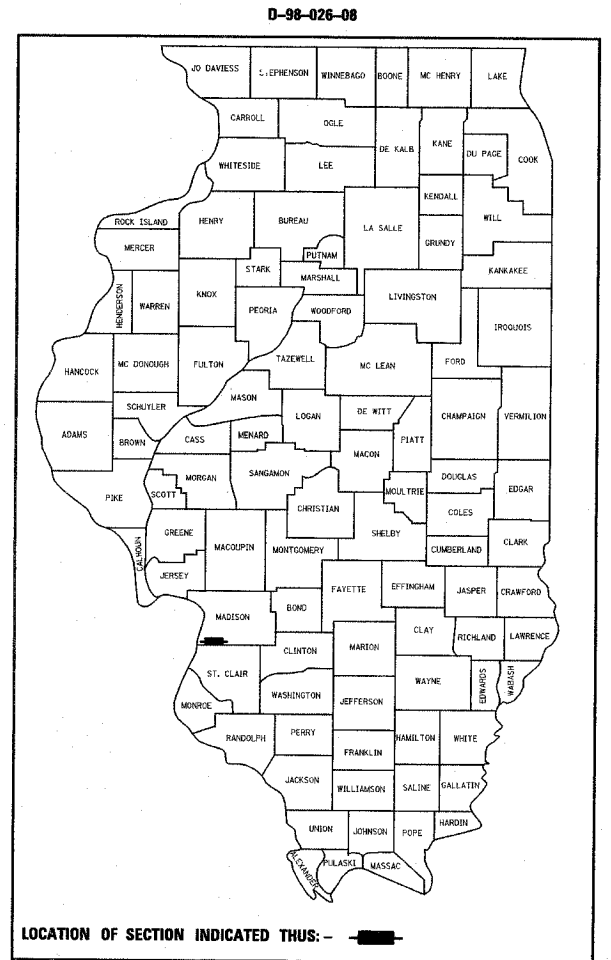
•255/270

INDEX OF SHEETS

1. TITLE SHEET
2. PLAN SHEET LAYOUT / VOLUME SCHEDULE
- 3-4. SUMMARY OF QUANTITIES
5. GENERAL NOTES, LEGEND AND SPECIFICATIONS
- 6-7. STORM WATER POLLUTION PREVENTION DETAILS
8. RADAR VEHICLE DETECTION DETAILS
9. TRUSS MOUNTED CONTROLLER CABINET DETAILS
10. LIGHT POLE FOUNDATION DETAILS
11. POLE MOUNTED CCTV DETAIL WITH CAMERA LOWERING DEVICE
12. POLE MOUNTED CCTV DETAIL WITH CAMERA LOWERING DEVICE AND SERVICE INSTALLATION DETAILS
13. POLE MOUNTED CCTV DETAIL WITH CAMERA LOWERING DEVICE AND SERVICE INSTALLATION DETAILS
- 14-23. ITS PLAN SHEETS 1 - 10 OF 10
24. TERMINATION-SPLICES TOTALS & SWITCH SCHEDULE
25. COMMUNICATION SYSTEM COVER SHEET
26. COMMUNICATION SHEET MP025528.4 CABINET TO MP025529.3 CABINET
27. COMMUNICATION SHEET MP025530.9 CABINET TO MP027008.4 CABINET
28. BORING LOGS

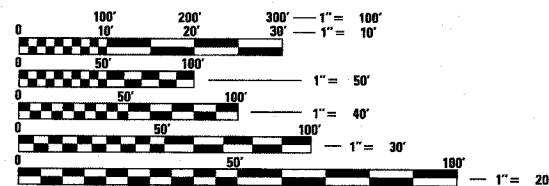
STANDARDS

000001-05	280001-04	701101-01
701106-01	701400-02	701406-04
701446	701901	814001-01
814006-01	878001-00	



PROJECT ENGINEER: PATTI LeBEAU (618)-346-3179
SQUAD LEADER: MICHAEL PRESTON (618) 346-3143
LIAISON ENGINEER: BRIAN SNEED (618) 346-3118

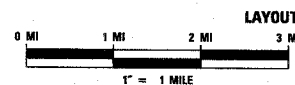
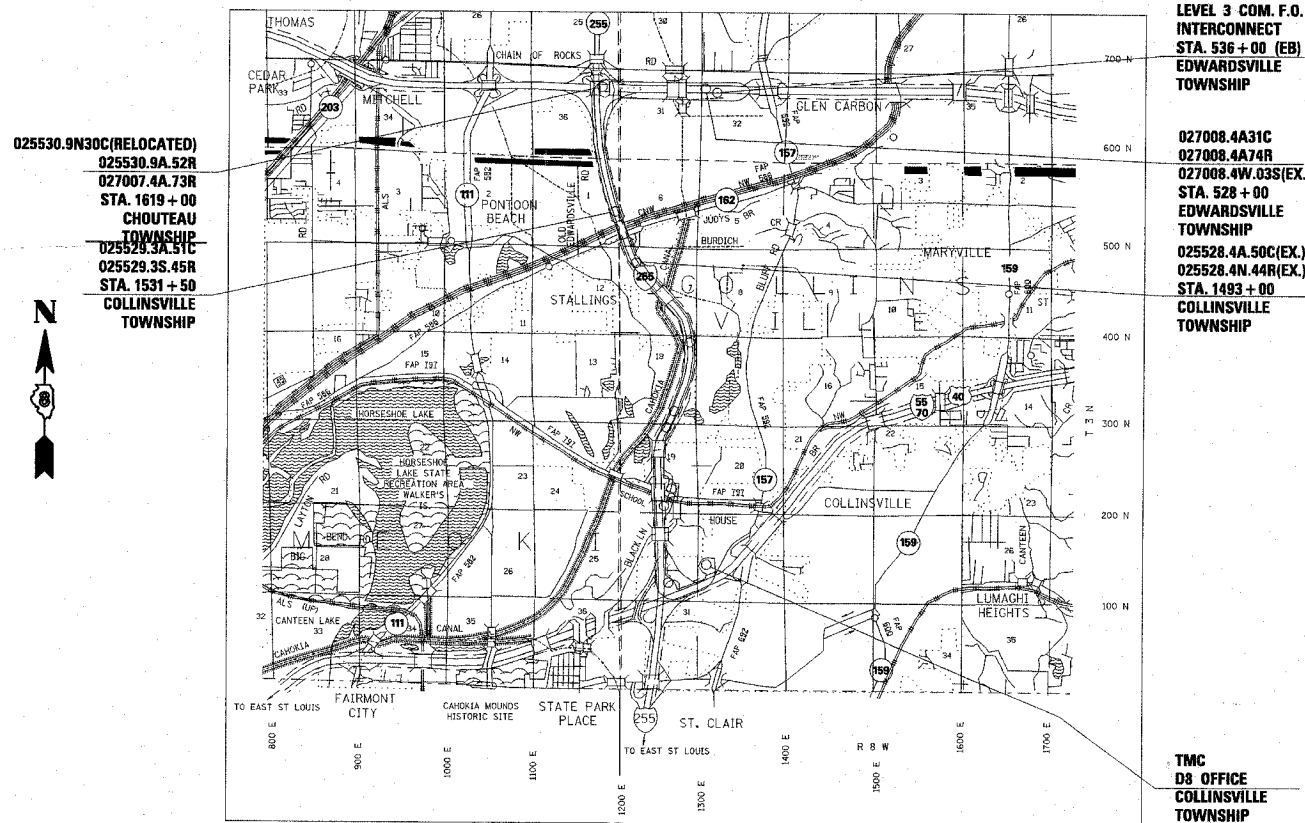
PLOT DATE = 3/17/2008
 FILE NAME = c:\projects\ed-025528\electrical\lsp\025528-01.dgn
 PLOT SCALE = 80.0000 / 1 IN.
 REFERENCE = REF#



FULL SIZE PLANS HAVE BEEN PREPARED USING STANDARD ENGINEERING SCALES. REDUCED SIZED PLANS WILL NOT CONFORM TO STANDARD SCALES. IN MAKING MEASUREMENTS ON REDUCED PLANS, THE ABOVE SCALES MAY BE USED.

J.U.L.I.E.
JOINT UTILITY LOCATION INFORMATION FOR EXCAVATION
1-800-892-0123
OR 811

PROJECT ENGINEER: PATTI LeBEAU (618)-346-3179
SQUAD LEADER: MICHAEL PRESTON (618) 346-3143
LIAISON ENGINEER: BRIAN SNEED (618) 346-3118
CONTRACT NO. 76B53



STATE OF ILLINOIS
DEPARTMENT OF TRANSPORTATION
DIVISION OF HIGHWAYS

SUBMITTED *March 18* 2008

Mason C. Jamie
DEPUTY DIRECTOR OF HIGHWAYS, REGION ENGINEER

May 9, 2008
Eric E. Harms
ENGINEER OF DESIGN AND ENVIRONMENT

May 9, 2008
Christine M. Reed
DIRECTOR OF HIGHWAYS, CHIEF ENGINEER

**PRINTED BY THE AUTHORITY
OF THE STATE OF ILLINOIS**