

STATE OF ILLINOIS
DEPARTMENT OF TRANSPORTATION
DIVISION OF HIGHWAYS

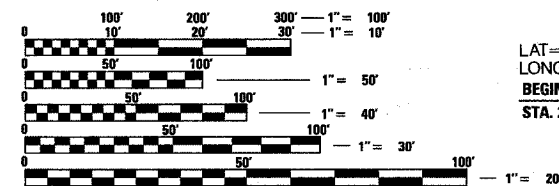
PROPOSED
HIGHWAY PLANS

FAI ROUTE 64
SECTION 82-4-1
PROJECT: *HSIP-064-1(121)005*
ST. CLAIR COUNTY
HIGH TENSION CABLE MEDIAN BARRIER
C-98-023-08

FOR INDEX OF SHEETS, SEE SHEET NO. 2

HIGHWAY STANDARDS

- 000001-05
- 701101-01
- 701400-02
- 701406-04
- 701426-02
- 701901



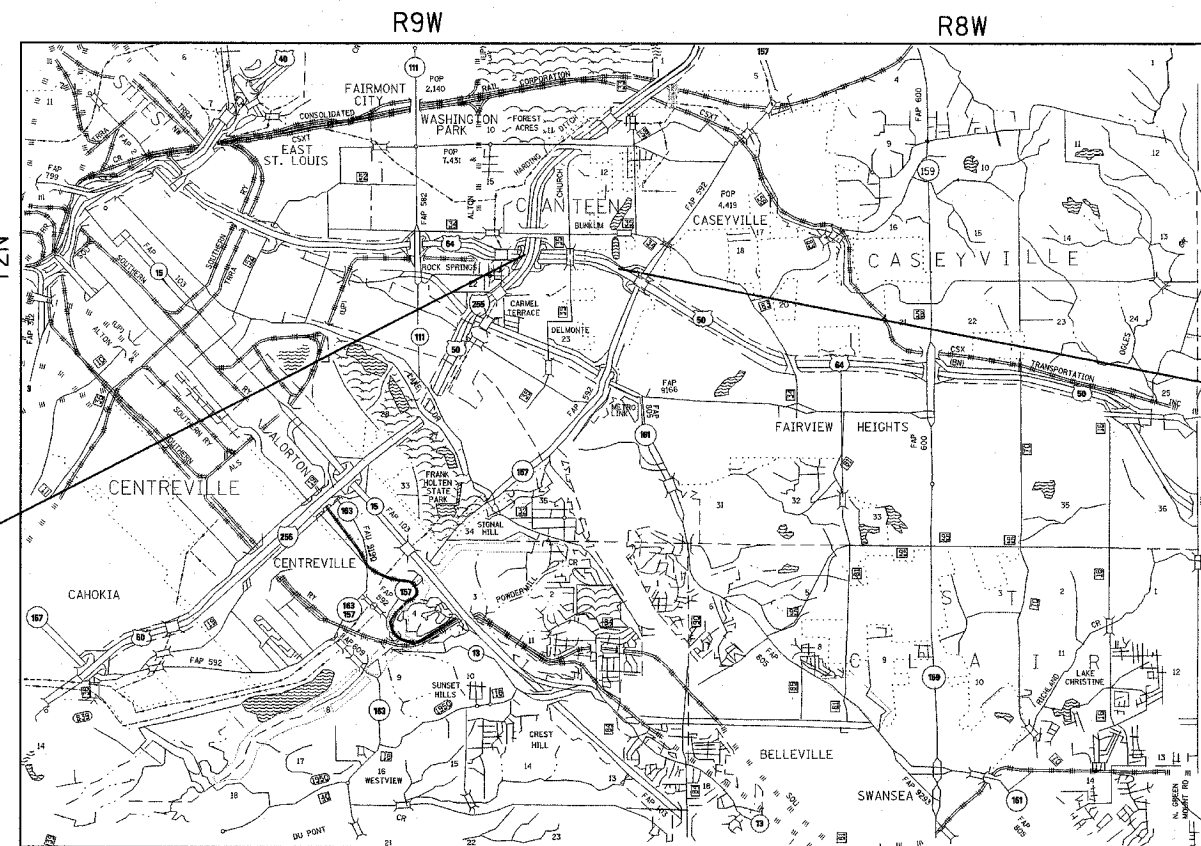
LAT=38.61874
LONG=-90.06880
BEGIN
STA. 279+56

FULL SIZE PLANS HAVE BEEN PREPARED USING STANDARD ENGINEERING SCALES. REDUCED SIZED PLANS WILL NOT CONFORM TO STANDARD SCALES. IN MAKING MEASUREMENTS ON REDUCED PLANS, THE ABOVE SCALES MAY BE USED.

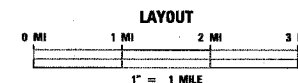
J.U.L.I.E.
JOINT UTILITY LOCATION INFORMATION FOR EXCAVATION
1-800-892-0123
OR 811

SQUAD LEADER: CHERYL KEPLAR 618/346-3186
PROJECT ENGINEER: PATTI LEBEAU 618/346-3179

CONTRACT NO. 76B57

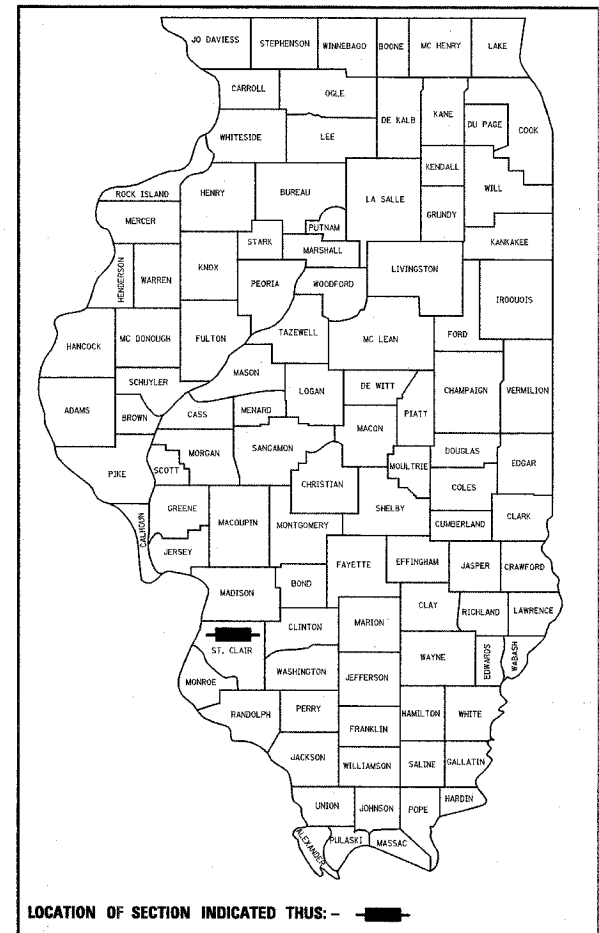


GROSS LENGTH = 5194' = 0.98 MILES
NET LENGTH = 5194' = 0.98 MILES



| | | | | |
|---------------------|----------|--------------------|--------------|-----------|
| F.A.I. RTE. | SECTION | COUNTY | TOTAL SHEETS | SHEET NO. |
| 64 | 82-4-1 | ST. CLAIR | 16 | 1 |
| FED. ROAD DIST. NO. | ILLINOIS | CONTRACT NO. 76B57 | | |

D-98-029-08



END
STA. 331+50
LAT=38.61693
LONG=-90.05160

STATE OF ILLINOIS
DEPARTMENT OF TRANSPORTATION
DIVISION OF HIGHWAYS

SUBMITTED *March 18 20 08*

Mary C. Jamel
DEPUTY DIRECTOR OF HIGHWAYS, REGION 5 ENGINEER

May 9 20 08
Eric E. Haran
INTERIM ENGINEER OF DESIGN AND ENVIRONMENT

May 9 20 08
Christie M. Reed
DIRECTOR OF HIGHWAYS, CHIEF ENGINEER

PRINTED BY THE AUTHORITY
OF THE STATE OF ILLINOIS