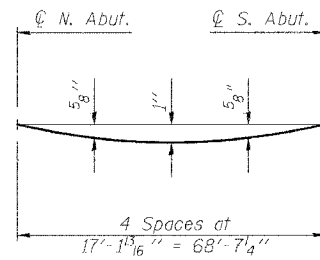


STATE OF ILLINOIS
DEPARTMENT OF TRANSPORTATION

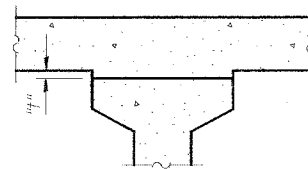
ROUTE NO. F.A.S. 2826	SECTION (110B)-1	COUNTY JEFFERSON	TOTAL SHEETS 44	SHEET 13	SHEET NO. 2 16 SHEETS
FED. ROAD DIST. NO. 7		ILLINOIS	FED. AID PROJECT		

Contract #8013



DEAD LOAD DEFLECTION DIAGRAM
(Includes weight of concrete, excluding beams).

Note:
The above deflections are not to be used in the field if the engineer is working from the grade elevations adjusted for dead load deflections as shown on this sheet and on sheet 3 of 16.



BEAM 1

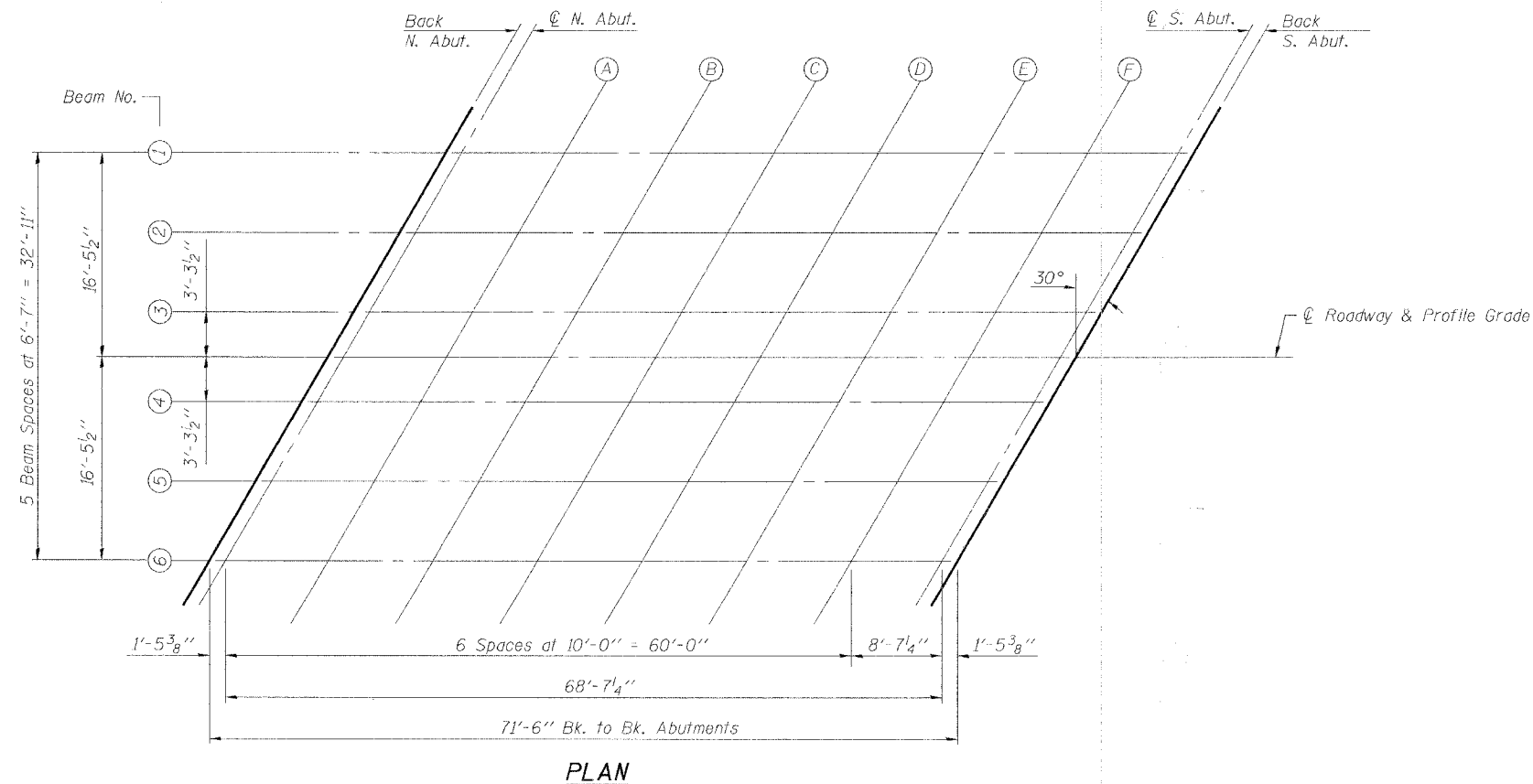
Location	Station	Offset	Theoretical Grade Elevations	Theoretical Grade Elevations Adjusted for Dead Load Deflection
Bk. N. Abut.	836+53.75	-16.46	497.12	497.12
© N. Abut.	836+55.20	-16.46	497.09	497.09
A	836+65.20	-16.46	496.90	496.93
B	836+75.20	-16.46	496.71	496.77
C	836+85.20	-16.46	496.53	496.61
D	836+95.20	-16.46	496.36	496.43
E	837+05.20	-16.46	496.19	496.25
F	837+15.20	-16.46	496.04	496.07
© S. Abut.	837+23.81	-16.46	495.91	495.91
Bk. S. Abut.	837+25.25	-16.46	495.89	495.89

BEAM 2

Location	Station	Offset	Theoretical Grade Elevations	Theoretical Grade Elevations Adjusted for Dead Load Deflection
Bk. N. Abut.	836+49.95	-9.88	497.33	497.33
© N. Abut.	836+51.39	-9.88	497.30	497.30
A	836+61.39	-9.88	497.10	497.13
B	836+71.39	-9.88	496.91	496.97
C	836+81.39	-9.88	496.72	496.80
D	836+91.39	-9.88	496.55	496.63
E	837+01.39	-9.88	496.38	496.44
F	837+11.39	-9.88	496.22	496.25
© S. Abut.	837+20.01	-9.88	496.09	496.09
Bk. S. Abut.	837+21.45	-9.88	496.07	496.07

To determine "f": After all precast prestressed beams have been erected, elevations of the top flanges of the beams shall be taken at intervals shown below. These elevations subtracted from the "Theoretical Grade Elevations Adjusted for Dead Load Deflections" shown on this sheet and on sheet 3 of 16, minus slab thickness, equals the fillet heights "f" above top flanges of beams.

FILLET HEIGHTS



Note:
Work this sheet with sheet 3 of 16.

TOP OF SLAB ELEVATIONS
IL ROUTE 37 OVER LIMESTONE CREEK
F.A.S. ROUTE 2826 SECTION 110B-1
JEFFERSON COUNTY
STA. 836+80
S.N. 041-0107

DESIGNED	CMF
CHECKED	KCM
DRAWN	JLM
CHECKED	TMM

McDonough-Whitlow, P.C.
Consulting Engineers & Land Surveyors
138 East Wood Street
Hillsboro, IL 62049
Phone: 217.532.9233
Fax: 217.532.4300
PROFESSIONAL DESIGN NO. 184-002754