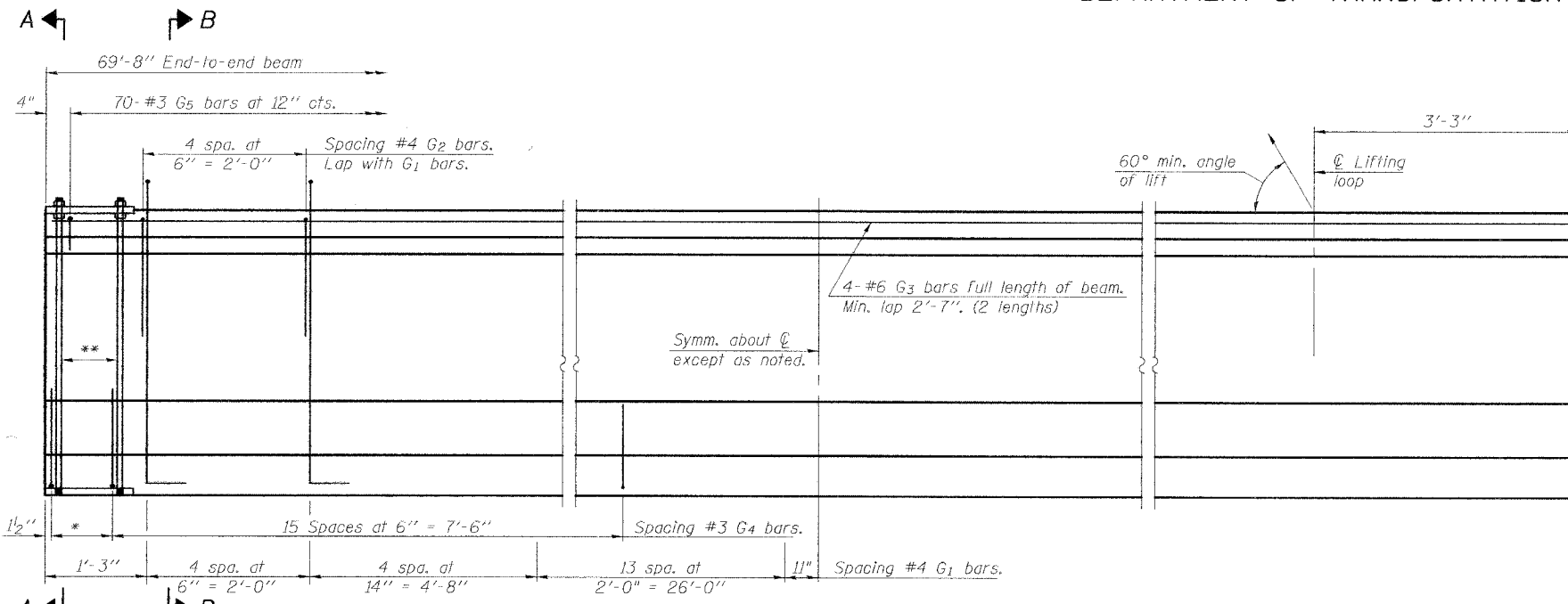


STATE OF ILLINOIS  
DEPARTMENT OF TRANSPORTATION

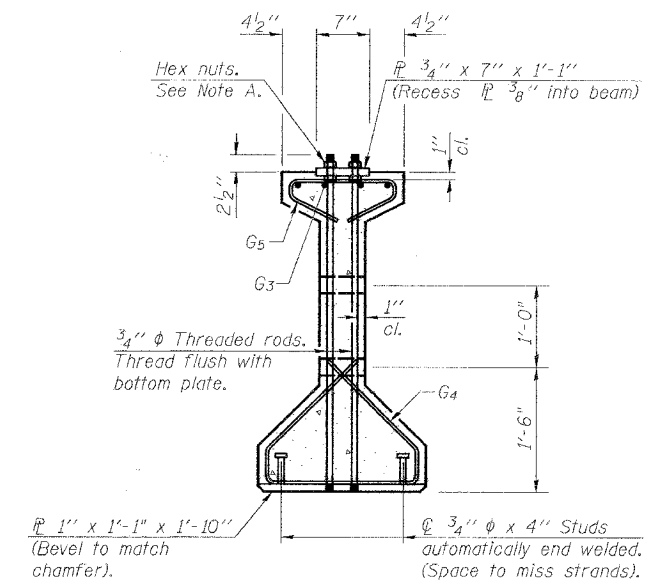
ROUTE NO.	SECTION	COUNTY	TOTAL SHEETS	SHEET NO.	SHEET NO. 10
F.A.S. 2826	110B-1	JEFFERSON	14	21	16 SHEETS
FED. ROAD DIST. NO. 7	ILLINOIS	FED. AID PROJECT-			

Contract 28013

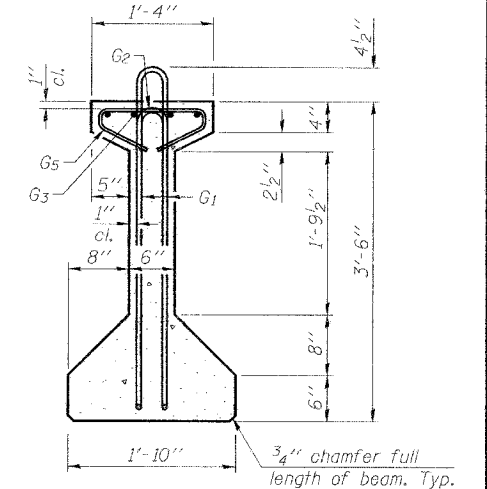


**ELEVATION OF BEAM**  
(Showing reinforcement & dimensions)

Note A:  
Hex nuts (top and bottom) with lock washers (top). Only tighten sufficiently to compress lock washers.

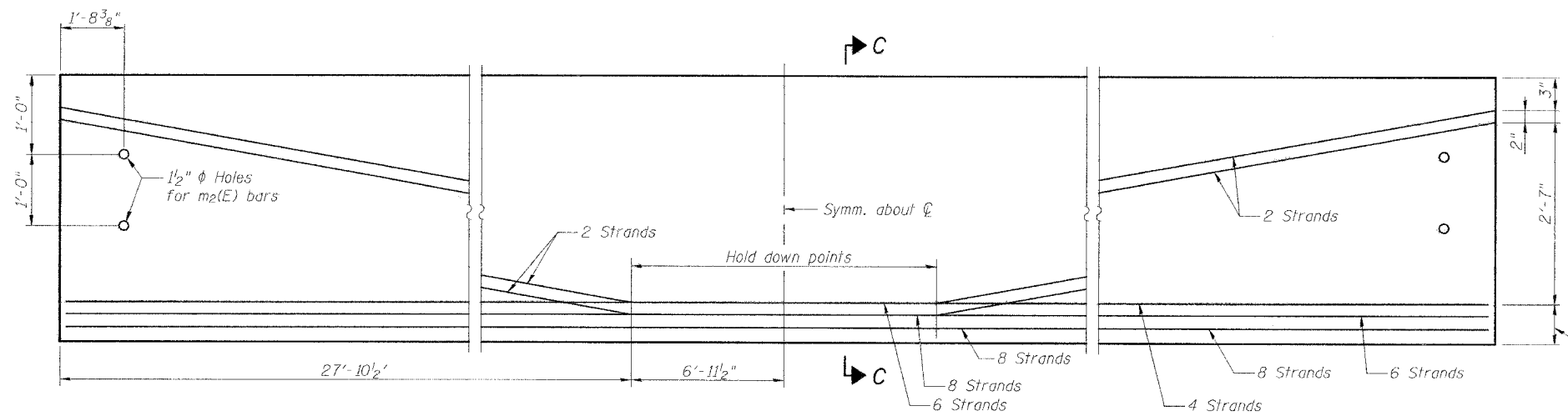


**SECTION A-A**

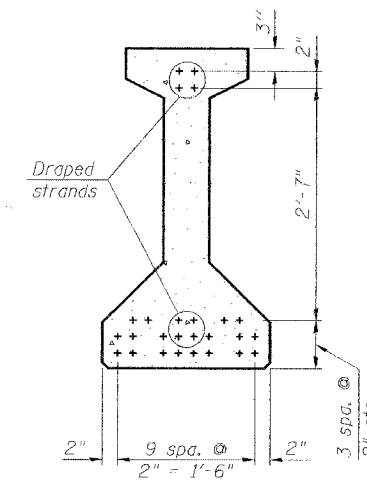


**SECTION B-B**

\* 3 spaces at 3" = 9".  
\*\* 4-3/4" diameter threaded dowel rods at 3" cts., each face.



**ELEVATION OF BEAM**  
(Showing prestressing steel)



**SECTION C-C**

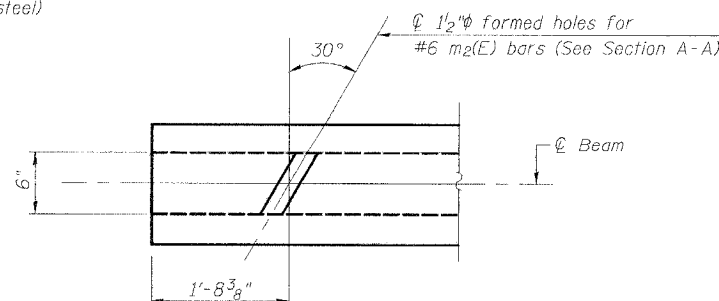
**BAR LIST**  
**ONE BEAM ONLY**

Bar	No.	Size	Length	Shape
G1	44	#4	8'-5"	⌢
G2	10	#4	4'-4"	⌢
G3	8	#6	36'-0"	—
G4	38	#3	4'-11"	⌢
G5	70	#3	2'-6"	⌢

Notes:  
See sheet 11 of 16 for additional details, notes, and Bill of Material.  
Required release strength, f'ci, shall be 5000 psi.

**42" PPC I-BEAM**  
**IL ROUTE 37 OVER LIMESTONE CREEK**  
**F.A.S. ROUTE 2826 SECTION 110B-1**  
**JEFFERSON COUNTY**  
**STA. 836+80**  
**S.N. 041-0107**

DESIGNED	CMF
CHECKED	KCM
DRAWN	JLM
CHECKED	TMM



**END OF BEAM PLAN**

**McDonough-Whitlow, P.C.**  
Consulting Engineers & Land Surveyors  
138 East Wood Street  
Hillsboro, IL 62049  
Phone: 217.532.9233  
Fax: 217.532.6300  
PROFESSIONAL DESIGN NO. 184-002754