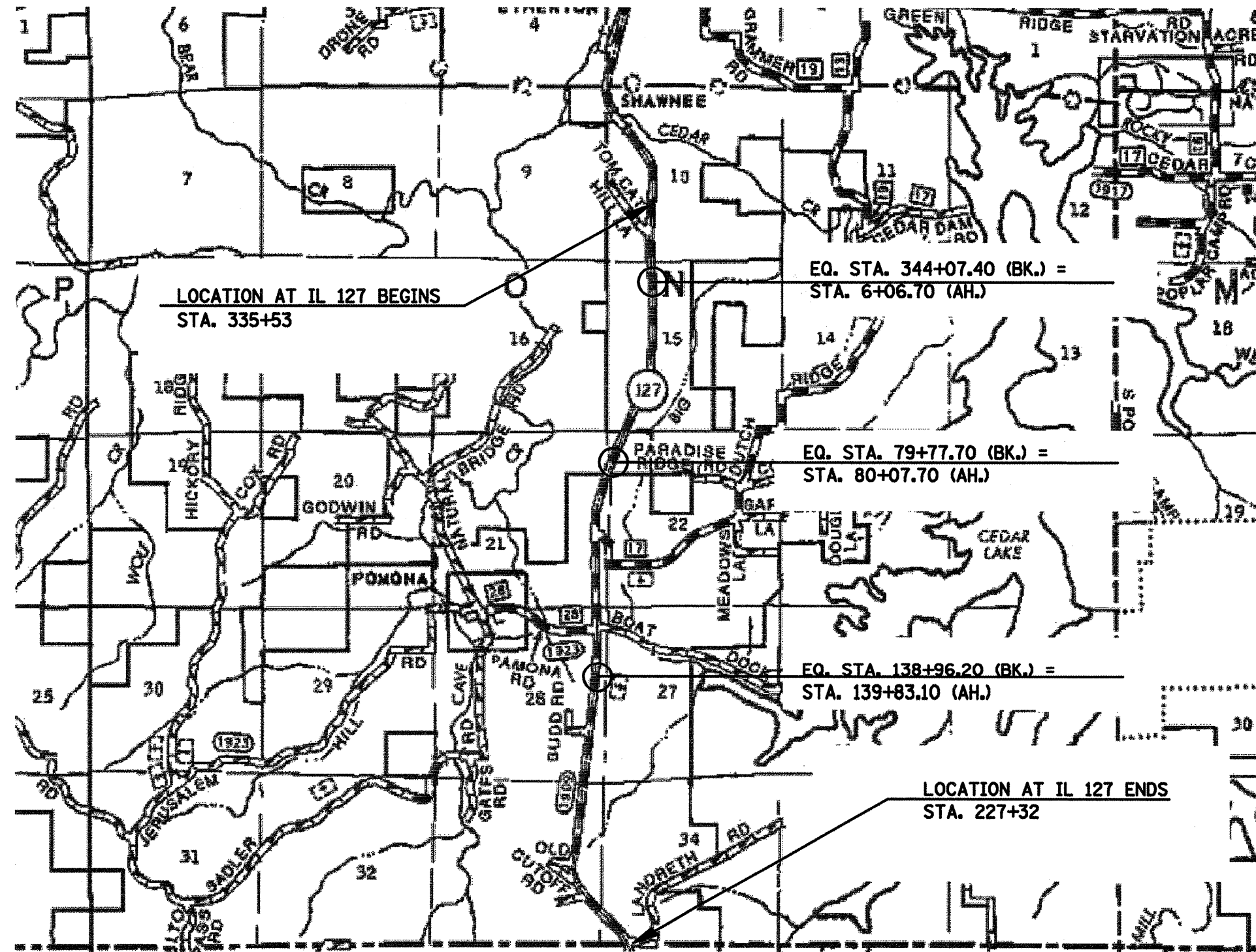


F.A.I. RTE.	SECTION	COUNTY	TOTAL SHEETS	SHEET NO.
*	**	***	22	16
STA. _____		TO STA. _____		
FED. ROAD DIST. NO. _____		ILLINOIS FED. AID PROJECT _____		

FAS 1909 (IL 127) LOCATION MAP
FROM TOMCAT HILL LN. TO JACKSON/UNION CO. LINE

- FAS 1909 & FAP 322
- D9 PAVEMENT PRESERVATION FY08
- JACKSON AND UNION COUNTIES



DATE: 12/27/2007
 FILE NAME: 1909190917.mxd
 PLOT SCALE: 1/8"=1'-0"
 USER: NAME: mcorcoran