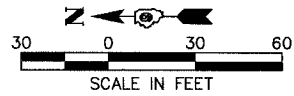




**SCHEDULE OF QUANTITIES**

RELOCATE TEMPORARY CONCRETE BARRIER	STATION TO	STATION	FEET
	84+65.5	87+15.5	250
			TOTAL - 250

- IMPACT ATTENUATORS, RELOCATE (NON-REDIRECTIVE), TEST LEVEL 3 - 2 EACH
- IMPACT ATTENUATORS, TEMPORARY (FULLY REDIRECTIVE, NARROW), TEST LEVEL 3 - 1 EACH

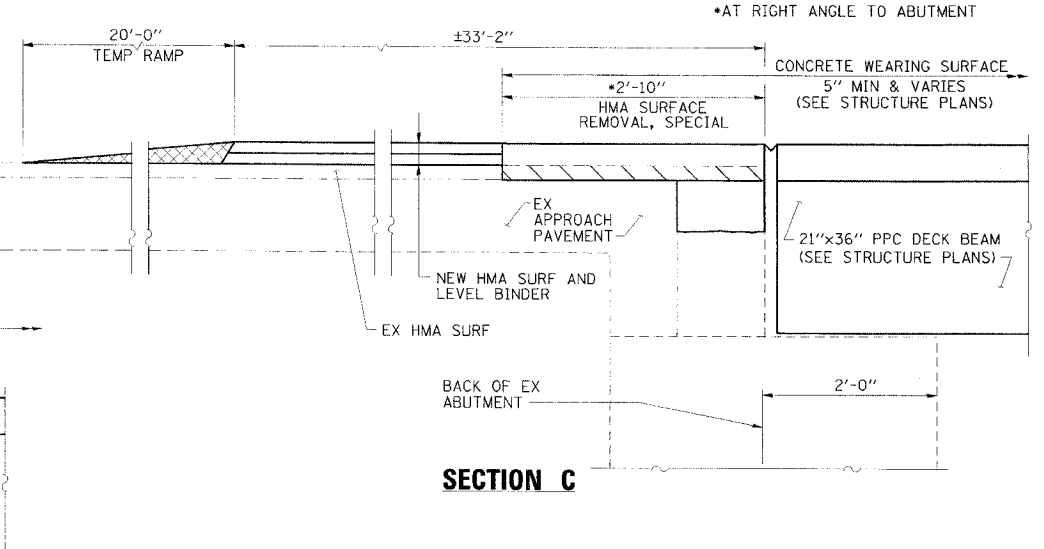
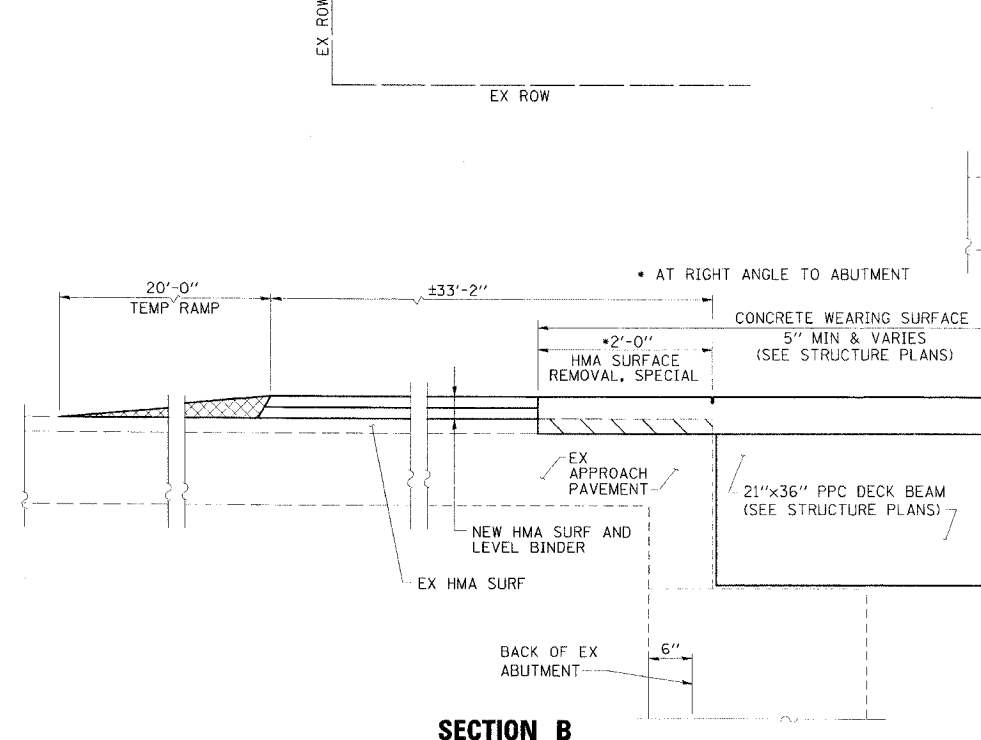
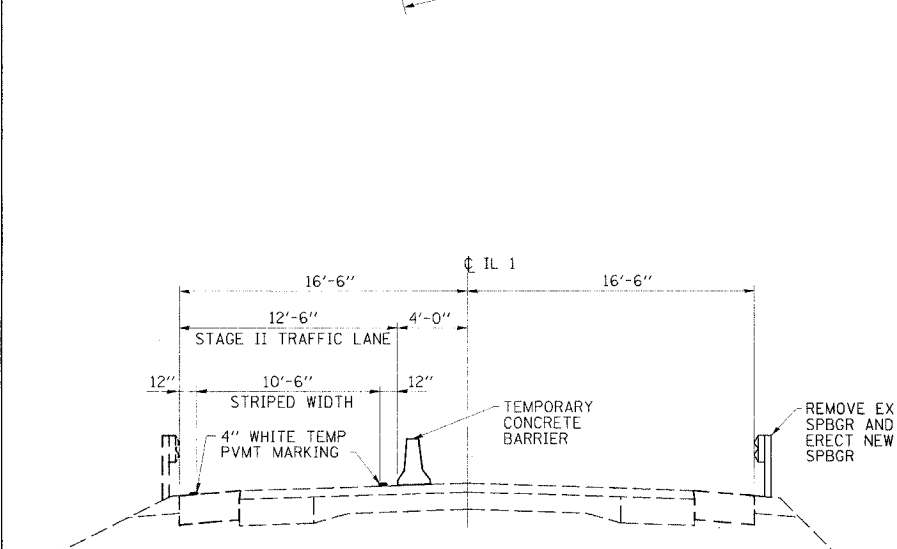
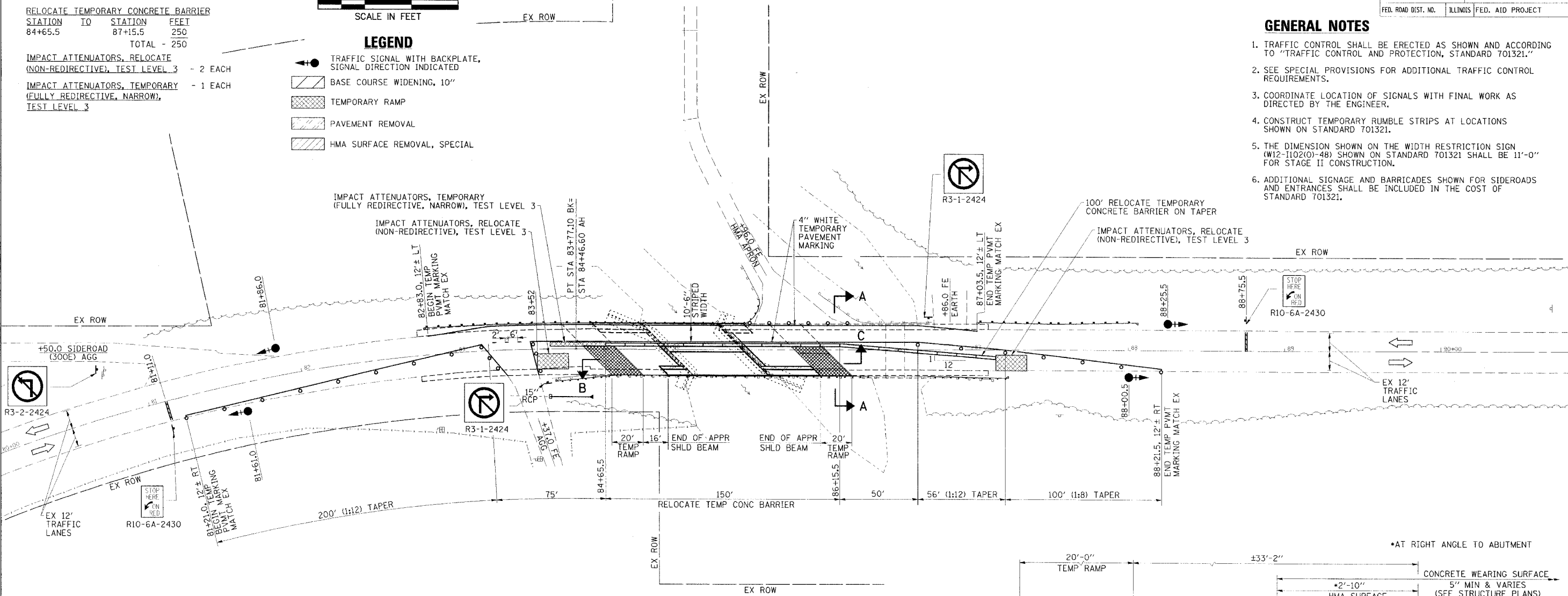


- LEGEND**
- TRAFFIC SIGNAL WITH BACKPLATE, SIGNAL DIRECTION INDICATED
  - BASE COURSE WIDENING, 10"
  - TEMPORARY RAMP
  - PAVEMENT REMOVAL
  - HMA SURFACE REMOVAL, SPECIAL

FAP RTE	SECTION	COUNTY	TOTAL SHEETS	SHEET NO.
782	110BR-1	WHITE	73	13
STA. 80+00 TO STA. 91+00		ILLINOIS FED. AID PROJECT		

**GENERAL NOTES**

- TRAFFIC CONTROL SHALL BE ERECTED AS SHOWN AND ACCORDING TO "TRAFFIC CONTROL AND PROTECTION, STANDARD 701321."
- SEE SPECIAL PROVISIONS FOR ADDITIONAL TRAFFIC CONTROL REQUIREMENTS.
- COORDINATE LOCATION OF SIGNALS WITH FINAL WORK AS DIRECTED BY THE ENGINEER.
- CONSTRUCT TEMPORARY RUMBLE STRIPS AT LOCATIONS SHOWN ON STANDARD 701321.
- THE DIMENSION SHOWN ON THE WIDTH RESTRICTION SIGN (W12-1102(O)-48) SHOWN ON STANDARD 701321 SHALL BE 11'-0" FOR STAGE II CONSTRUCTION.
- ADDITIONAL SIGNAGE AND BARRICADES SHOWN FOR SIDEROADS AND ENTRANCES SHALL BE INCLUDED IN THE COST OF STANDARD 701321.



**ESCA CONSULTANTS, INC.**

DESIGNED BY:	DAJ	10/07
DRAWN BY:	HAS	10/07
CHECKED BY:	MTD	02/08
APPROVED BY:	RDP	02/08

**SECTION A-A**

**SECTION B**

**SECTION C**

**STAGE II CONSTRUCTION**  
**FAP RTE 782 (IL 1)**  
**SECTION 110BR-1**  
**WHITE COUNTY**