

BENCHMARK: Chiseled Square on top of northeast wingwall of SN 033-0016, Sta. 84+82.78, 18.7' Lt., Elev. 400.43

EXISTING STRUCTURE: SN 033-0016 was originally built in 1928 as S.B.I. Rte. 142, Section 115-B. The superstructure was replaced in 1976 and precast concrete bridge slabs were utilized to widen the approaches. The superstructure consists of two simple spans, 17"x36" PPC deck beams. The substructure consists of two reinforced concrete closed abutments and a reinforced concrete pier on timber piles. The back-to-back abutments length is 78'-6", the out-to-out width is 33'-0". The existing superstructure and the existing bridge approach shoulders shall be removed and replaced utilizing stage construction.

No salvage.

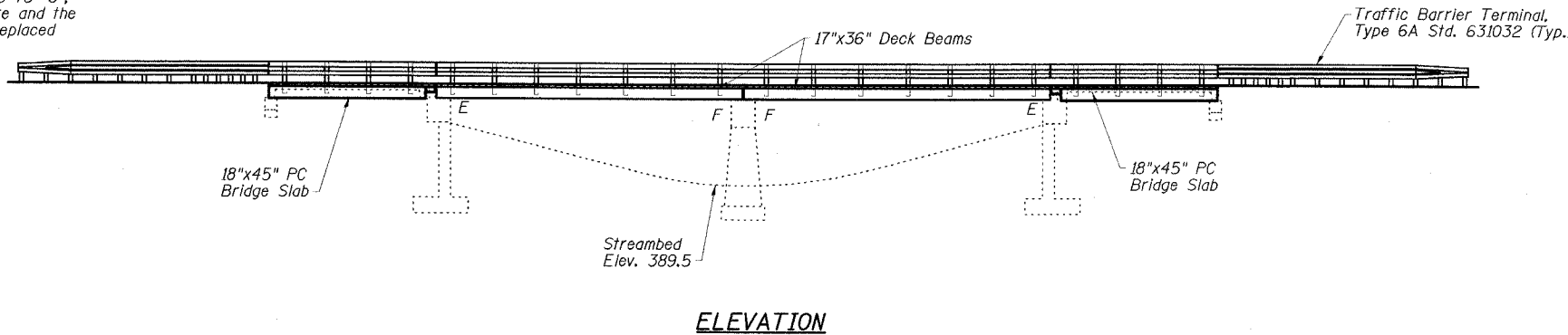
STATION 85+05.00
REBUILT 20__ BY
STATE OF ILLINOIS
F.A.P. RT. 776 SEC. 115BR-1
LOADING HS20
STR. NO. 033-0016

NAME PLATE

Note:
See Std. 515001
Existing Name Plate shall be cleaned and relocated adjacent to the new plate. Cost included with Name Plates.

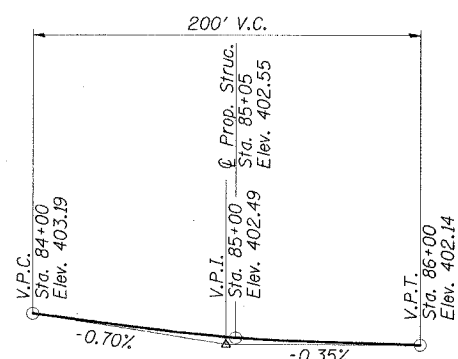
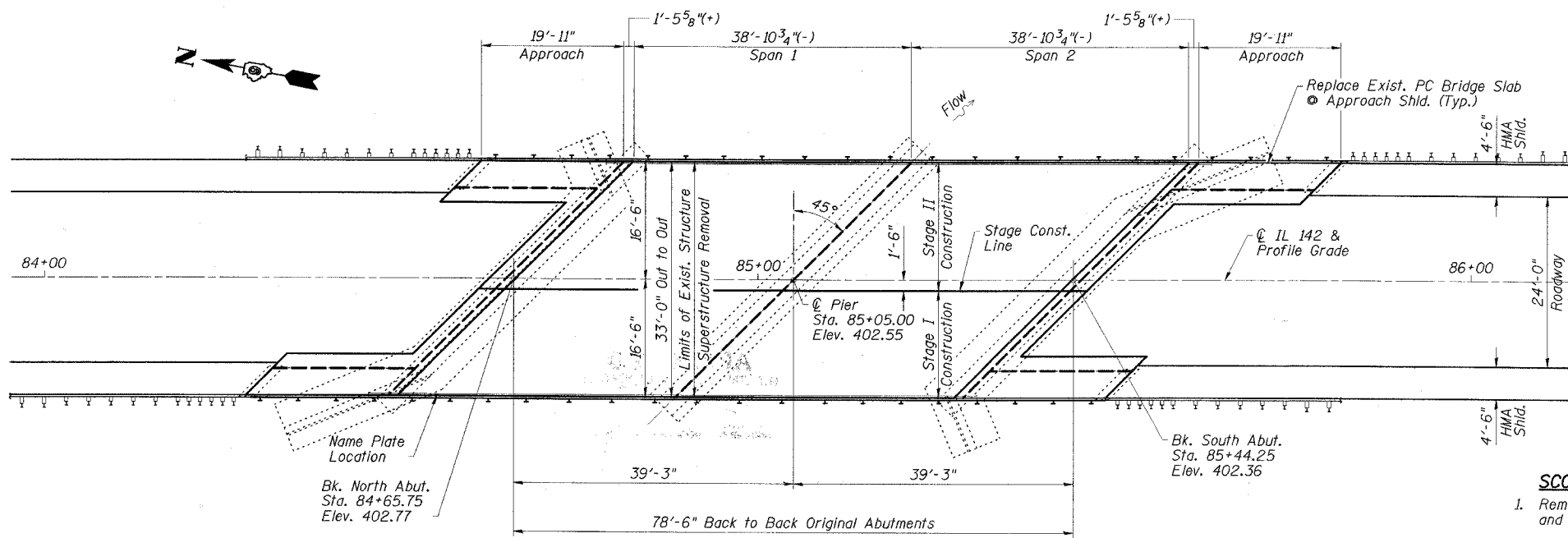
STATE OF ILLINOIS
DEPARTMENT OF TRANSPORTATION

ROUTE NO.	DISTRICT	COUNTY	SECTION	SHEET	SHEET NO.
FAP 776	115BR-1	HAMILTON	73	18	17 SHEETS
FED. ROAD DIST. NO. 9 ILLINOIS FED. AID PROJECT					78027



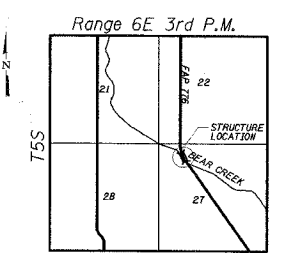
STRUCTURE INDEX OF SHEETS

General Plan	Dwg. No. 1 of 17
General Data	Dwg. No. 2 of 17
Stage Construction Details	Dwg. No. 3 of 17
Temporary Concrete Barrier	Dwg. No. 4 of 17
Superstructure	Dwg. No. 5 of 17
Superstructure Details	Dwg. No. 6 & 7 of 17
Approach Details	Dwg. No. 8 of 17
Superstructure and Approach Details	Dwg. No. 9 of 17
Steel Railing, Type SM	Dwg. No. 10 of 17
Strip Seal Expansion Joint	Dwg. No. 11 of 17
North Abutment	Dwg. No. 12 of 17
South Abutment	Dwg. No. 13 of 17
Abutment Details	Dwg. No. 14 of 17
Pier	Dwg. No. 15 of 17
Pier Details	Dwg. No. 16 of 17
Bar Splicer Assembly Details	Dwg. No. 17 of 17



PLAN

DESIGN SPECIFICATION
2002 AASHTO
LOADING HS20-44
No allowance for future wearing surface
DESIGN STRESSES
FIELD UNITS
f'c = 5,000 psi (Concrete Wearing Surface)
f'c = 3,500 psi (All concrete except CWS)
fy = 60,000 psi (reinf.)
PRECAST PRESTRESSED UNITS
f'c = 6,000 psi
f'ci = 5,000 psi
f's = 270,000 psi (1/2" low lax strands)
f'si = 201,960 psi (1/2" low lax strands)
PRECAST UNITS
f'c = 4,500 psi
fy = 60,000 psi (reinf.)



LOCATION SKETCH

APPROVED
FOR STRUCTURAL ADEQUACY ONLY

Ralph E. Anderson
ENGINEER OF BRIDGES AND STRUCTURES

SCOPE OF WORK

1. Remove existing surfacing, steel railing, deck beams, curbs, and bridge approach shoulders.
2. Repair beam bearing seats and perform other repairs at abutments and pier as required.
3. Reconstruct a two-span PPCD beam superstructure with Concrete Wearing Surface and Steel Railing, Type SM. Reconstruct existing approach shoulders with Precast Concrete Bridge Slabs with Concrete Wearing Surface and Steel Railing, Type SM.

GENERAL PLAN
IL 142 OVER BEAR CREEK
FAP ROUTE 776 - SECTION 115BR-1
HAMILTON COUNTY
STATION 85+05.00
STRUCTURE NO. 033-0016

ESCA
CONSULTANTS, INC.

DESIGNED BY:	DAJ	09/07
DRAWN BY:	HAS	09/07
CHECKED BY:	JMS/ELH	02/08
APPROVED BY:	RDP	02/08

STATE OF ILLINOIS
No. 4647
EXPIRES 11-30-08
R. D. J. [Signature]
SIGNATURE
02/29/08
DATE