

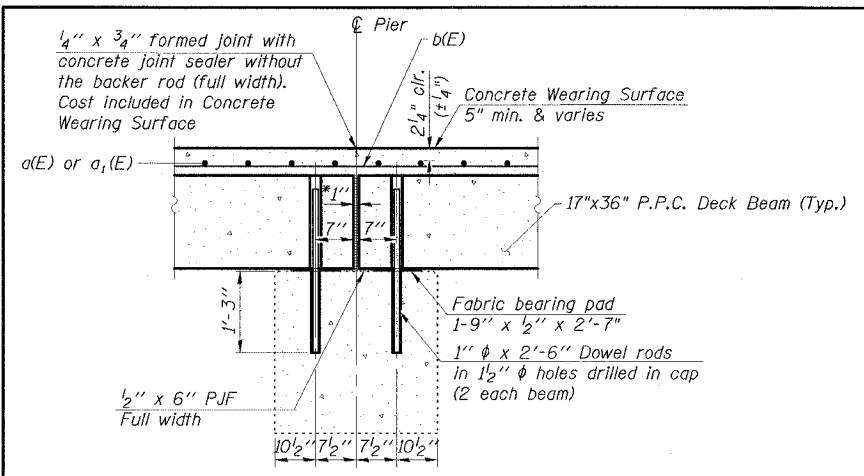
STATE OF ILLINOIS
DEPARTMENT OF TRANSPORTATION

ROUTE NO.	SECTION	COUNTY	SHEETS	SHEET	SHEET NO.
FAP 776	115BR-1	HAMILTON	73	26	17 SHEETS
FED. ROAD DIST. NO. 9 ILLINOIS FED. AID PROJECT					

78027

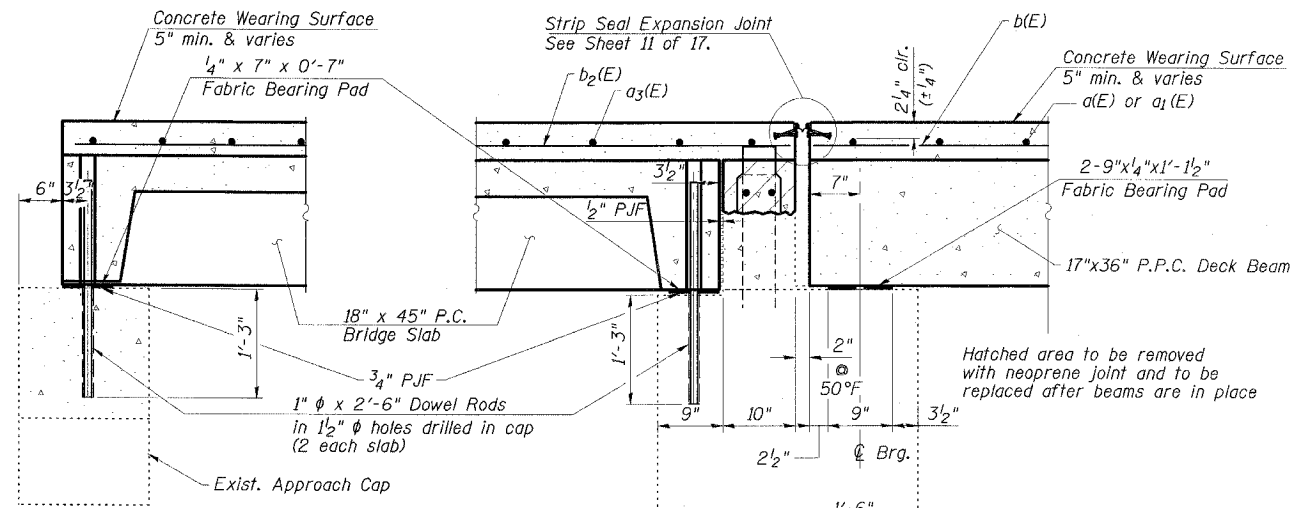
NOTES

- After beams have been erected, holes shall be drilled into substructure and dowels rods placed. Dowel holes shall be filled with non-shrink grout to top of beam and allowed to cure min. 24 hrs. prior to grouting the shear keys.
- Concrete wearing surface to be poured after grouting the shear keys.
- Dowel rods drilled in cap are included in the cost of Precast Prestressed Concrete Deck Beams (17" Depth) or Precast Concrete Bridge Slabs.
- The rail anchorage shall be cast with the beam or slab and the wearing surface shall be cast in the field. Formwork necessary for the wearing surface may be secured utilizing the bottom rail anchorage inserts and/or additional inserts cast into the beam or slab. Drilling into the beam or slab will not be permitted.
- Anchor bolts shall be ASTM F1554 all-thread (or an Engineer-approved alternate material) of the grade(s) and diameter(s) specified. ASTM A307 Grade C anchor bolts may be used in lieu of ASTM F1554 Grade 36 (Fy=36ksi). The corresponding specified grade of AASHTO M314 anchor bolts may be used in lieu of ASTM F1554.
- Drilled and set anchor bolts shall be installed according to Article 521.06 of the Standard Specifications.



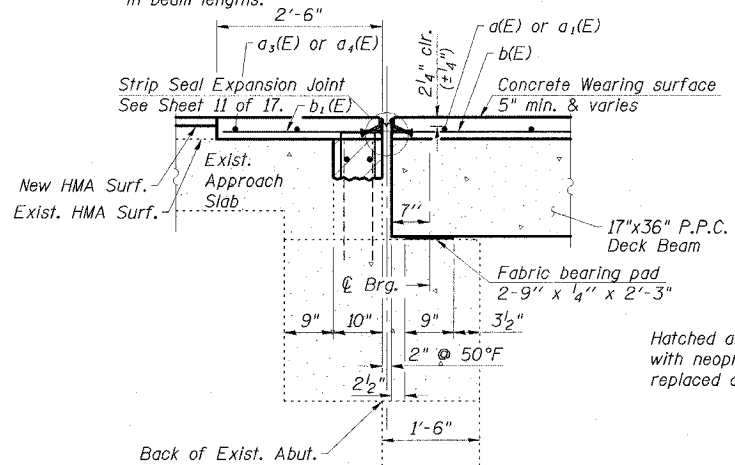
SECTION THRU FIXED PIER

(Dimensions @ Rt. L's)
* 1" Jt. shall be filled with non-shrink grout. 1" dimension may vary to accommodate tolerance in beam lengths.



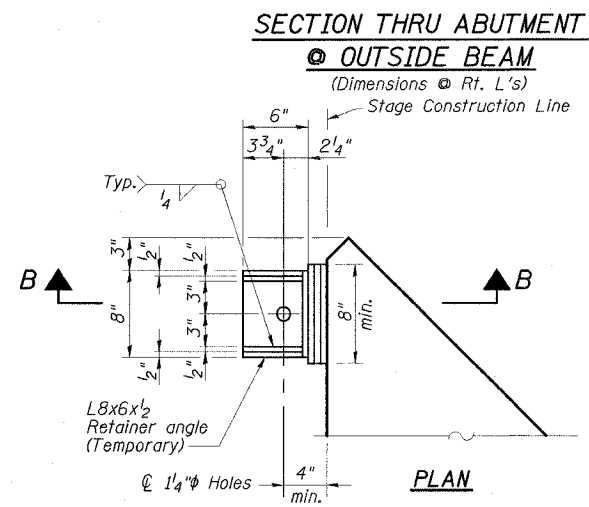
SECTION THRU BRIDGE SLAB

(Dimensions @ Rt. L's)



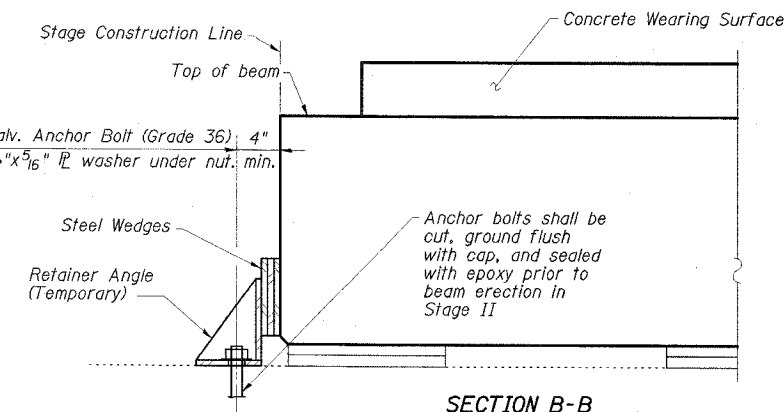
SECTION THRU ABUTMENT @ ROADWAY

(Dimensions @ Rt. L's)



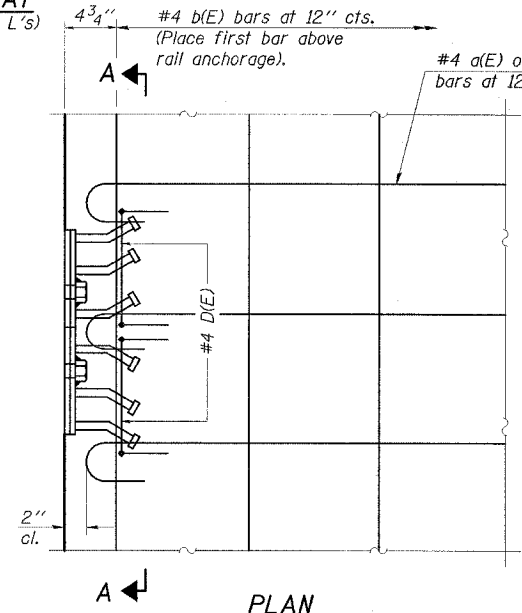
SECTION THRU ABUTMENT @ OUTSIDE BEAM

(Dimensions @ Rt. L's)

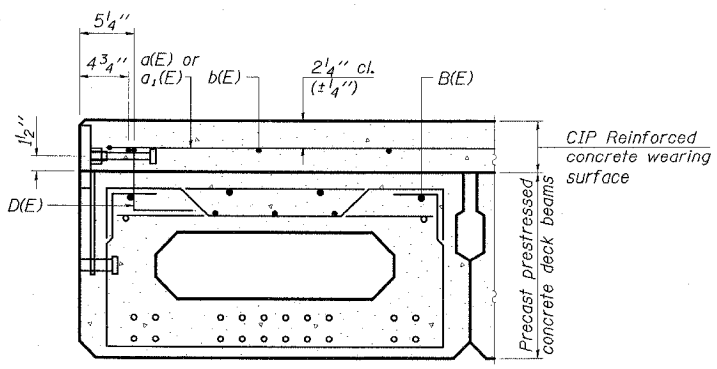


SECTION B-B

Cost of Retainer Angles, Anchor Bolts & accessories is included with Precast Prestressed Concrete Deck Beams.



PLAN

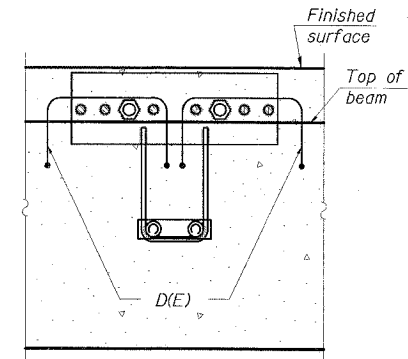


CROSS SECTION

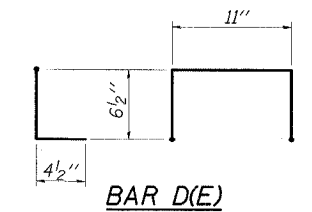
(Deck beam shown; PC bridge slab similar)

BEAM RETAINER DETAILS AT STAGE CONSTRUCTION LINE

(2 Required)



SECTION A-A



BAR D(E)

SUPERSTRUCTURE AND APPROACH DETAILS
IL 142 OVER BEAR CREEK
FAP ROUTE 776 - SECTION 115BR-1
HAMILTON COUNTY
STATION 85+05.00
STRUCTURE NO. 033-0016

ESCA
CONSULTANTS, INC.

DESIGNED BY:	DAJ	09/07
DRAWN BY:	HAS	09/07
CHECKED BY:	JMS/ELH	02/08
APPROVED BY:	RDP	02/08