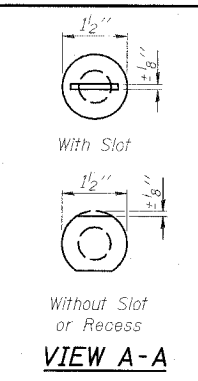
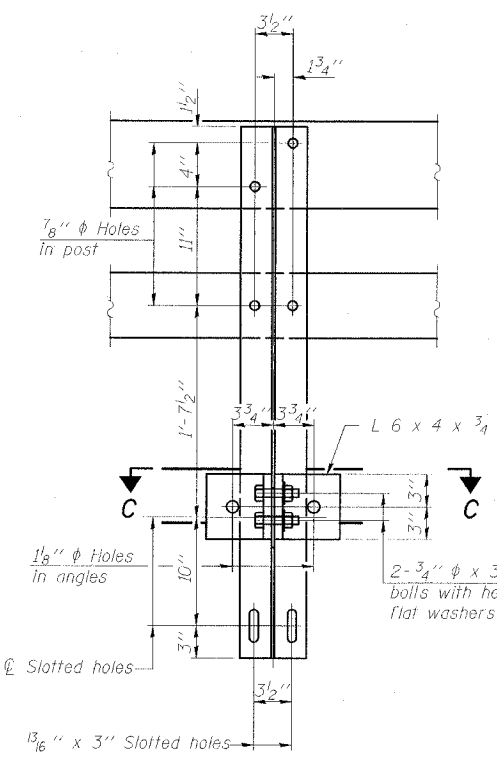
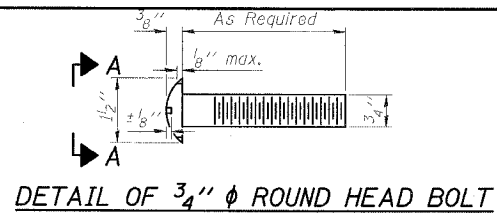


STATE OF ILLINOIS
DEPARTMENT OF TRANSPORTATION

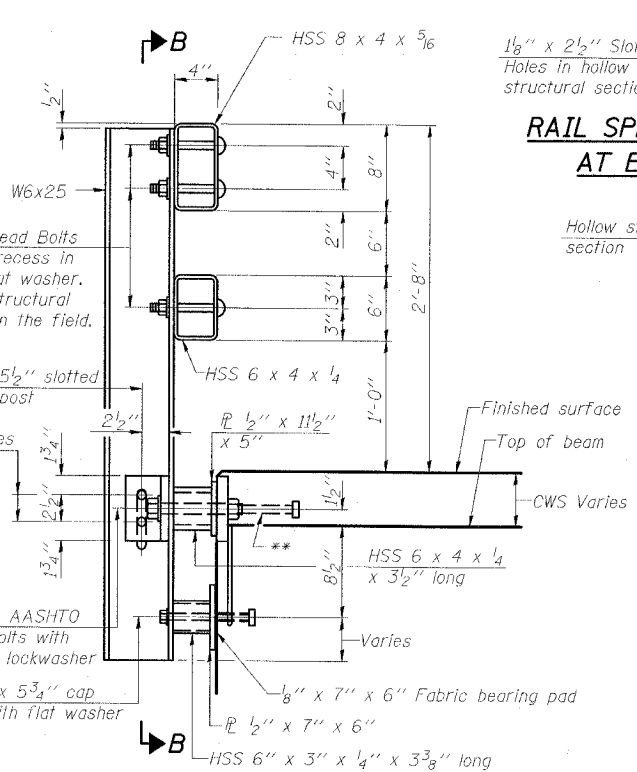
ROUTE NO.	SECTION	COUNTY	SHEET	SHEET NO.
FAP 776	115BR-1	HAMILTON	73	27
FED. ROAD DIST. NO. 4				ILLINOIS
FED. AID PROJECT				78027



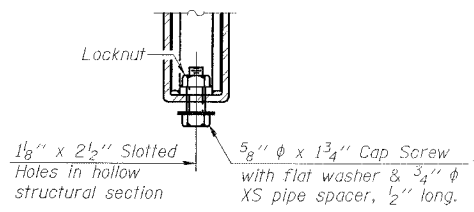
4- 3/4" ϕ x 6" Round Head Bolts
(With slot or approved recess in head) with locknut & flat washer.
7/8" ϕ holes in hollow structural section may be drilled in the field.

SECTION B-B

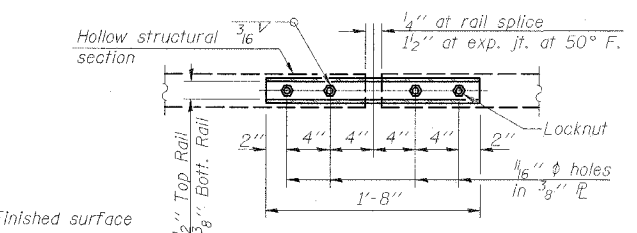
SECTION C-C



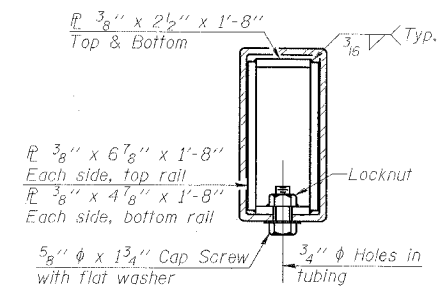
SECTION AT RAIL POST



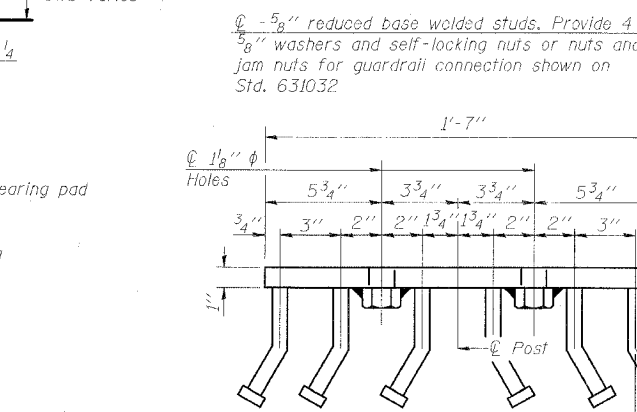
RAIL SPLICE CONNECTION
AT EXPANSION JT.



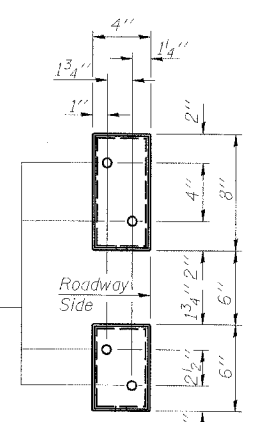
PLAN-BOTT. SPLICE R
TYPICAL



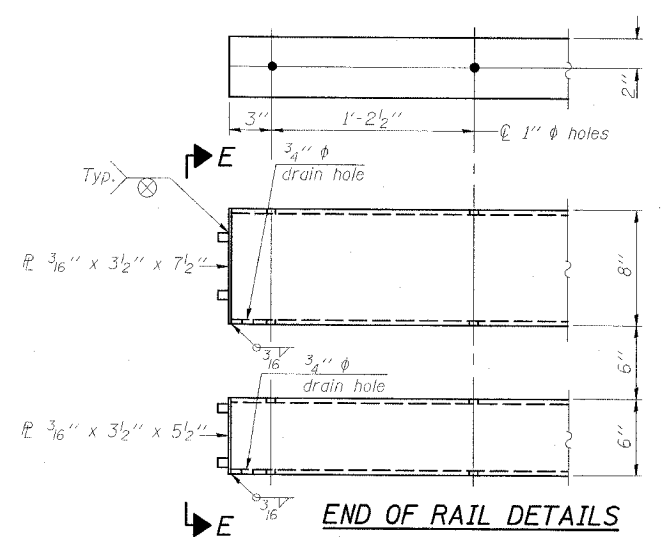
SECTION AT
RAIL SPLICE



VIEW D-D



VIEW E-E



END OF RAIL DETAILS

Notes:
All field drilled holes shall be coated with an approved zinc rich paint before erection.
For multi-span bridges, sufficient 1/4" x 6" x 1'-2" galvanized steel shims shall be provided to align rail between adjacent spans. Cost included with Steel Railing, Type SM.
Steel rail elements shall be galvanized according to Article 509.05 of the Standard Specifications.
**The studs of the anchor devices shall be placed below the top reinforcement bars and the outermost longitudinal reinforcement bar shall be placed directly above the studs of the rail post anchor device.

BILL OF MATERIAL

Item	Unit	Quantity
Steel Railing, Type SM	Foot	241

STEEL RAILING, TYPE SM
IL 142 OVER BEAR CREEK
FAP ROUTE 776 - SECTION 115BR-1
HAMILTON COUNTY
STATION 85+05.00
STRUCTURE NO. 033-0016

ESCA
CONSULTANTS, INC.

DESIGNED BY:	DAJ	09/07
DRAWN BY:	HAS	09/07
CHECKED BY:	JMS/ELH	01/08
APPROVED BY:	RDP	01/08

R-34CWS 9-3-07

(6'-3" Maximum Post Spacing) (5" minimum to 7 1/8" maximum CWS thickness)

*Threaded areas shall be plugged or blocked off during casting of beam. Galvanized after fabrication.