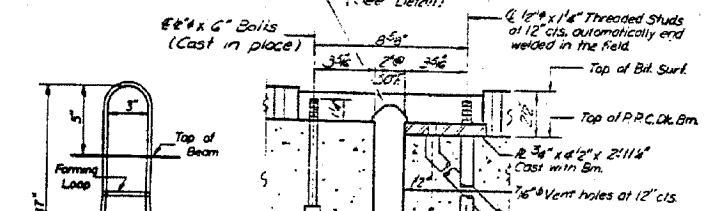
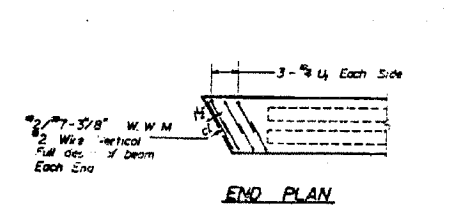
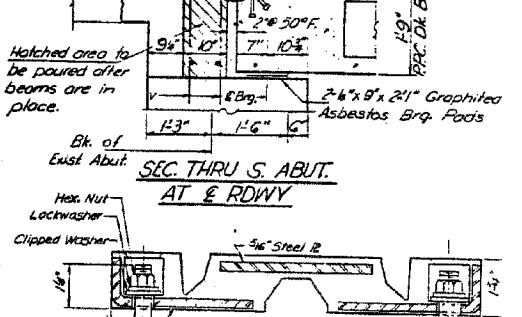
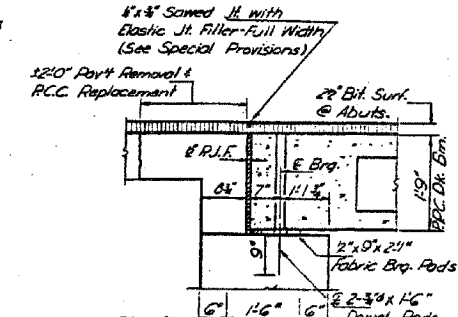
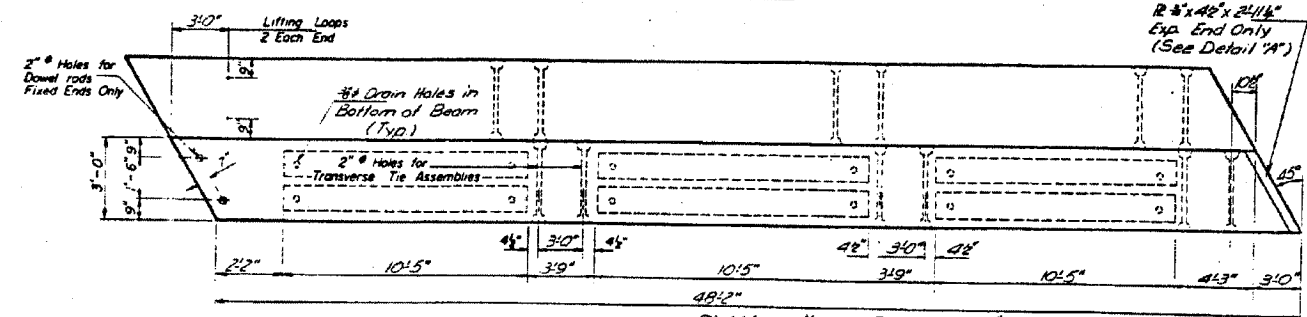
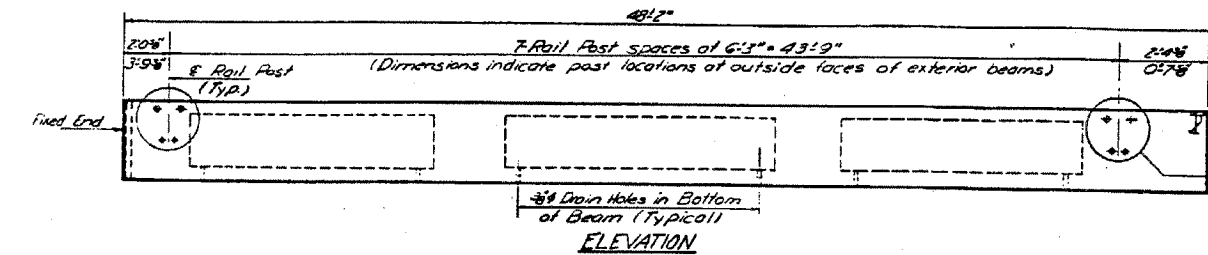
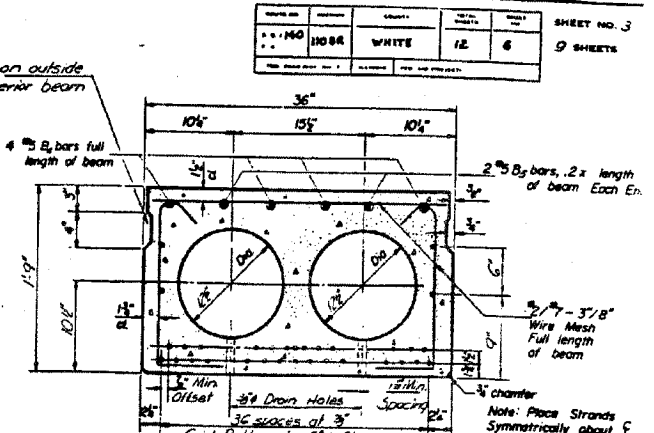
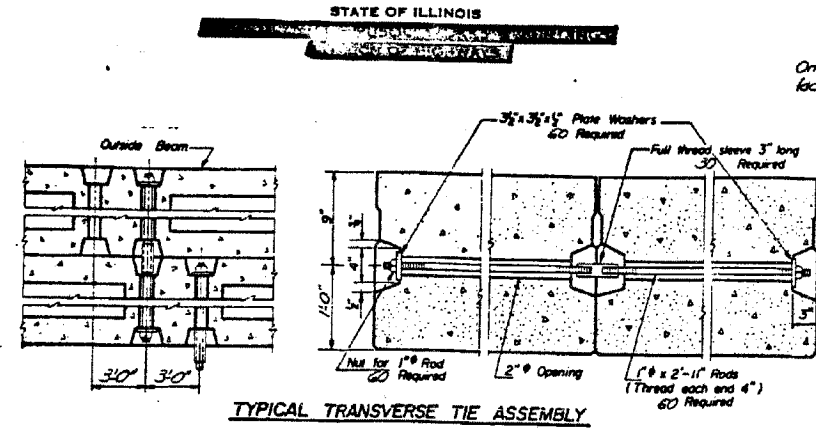
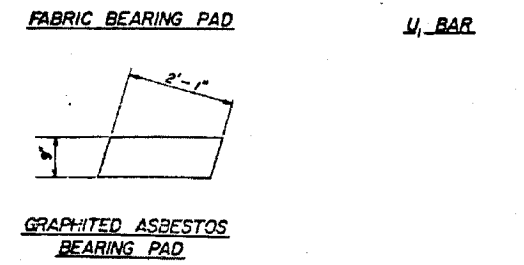
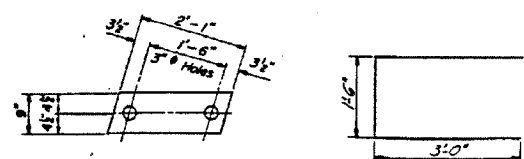




CONTRACT NO. 78027				
FAP RTE	SECTION	COUNTY	TOTAL SHEETS	SHEET NO.
782	110BR-1	WHITE	73	64
STA.		TO STA.		
FED. ROAD DIST. NO.	ILLINOIS	FED. AID PROJECT AID		



GENERAL NOTES
 Prestressing steel shall be non-galvanized high strength, stress-relieved 7-wire strand. The nominal diameter shall be 7/8" and the nominal cross-sectional area shall be 0.109 sq. in. Lifting loops shall be 3/8" diameter, 6 x 19 class wire rope with fiber core and shall have a minimum ultimate tensile strength of 33,000 lbs.
 The 1" rods in the transverse tie assembly shall be tightened to a snug fit and the threads set. Pockets that receive transverse tie bar on outside beam shall be filled with grout after transverse tie assembly is in place.
 Longitudinal shear keys shall be packed with a very dry mix of 2-1 sand and P.C. mortar. After beams have been erected, holes for the dowel anchors shall be grouted in place. Steel for dowel rods shall be A.S.T.M. A306 or A.S.T.M. A615 bars.
 Transverse tie rods shall be A.S.T.M. A306 Grade 70-80.
 After installation the transverse tie assemblies (tie rods, nuts, washers and sleeves) shall be hot-dipped galvanized in accordance with A.S.T.M. Designation A153.
 Cost of reinforcement and accessories cast into the beam, of bearing pads, of armor angles, and of grouting longitudinal shear keys is included in unit price bid for "Precast Prestressed Concrete Deck Beams 21" Depth."

BILL OF MATERIAL

Precast Prestressed Concrete Deck Beams (21" Depth)	54 Ft.	1590
---	--------	------

DESIGNED BY: DAJ	09/07
DRAWN BY: HAS	09/07
CHECKED BY: ELH	01/08
APPROVED BY: RDP	01/08

SUPERSTRUCTURE DETAILS
 SEE RT 110 672 10 3P

ESCA CONSULTANTS, INC.
 DESIGNED BY: DAJ 09/07
 DRAWN BY: HAS 09/07
 CHECKED BY: ELH 01/08
 APPROVED BY: RDP 01/08

EXISTING STRUCTURE PLANS
 FAP RTE 782 (IL 1)
 SECTION 110BR-1
 WHITE COUNTY

FOR INFORMATION ONLY