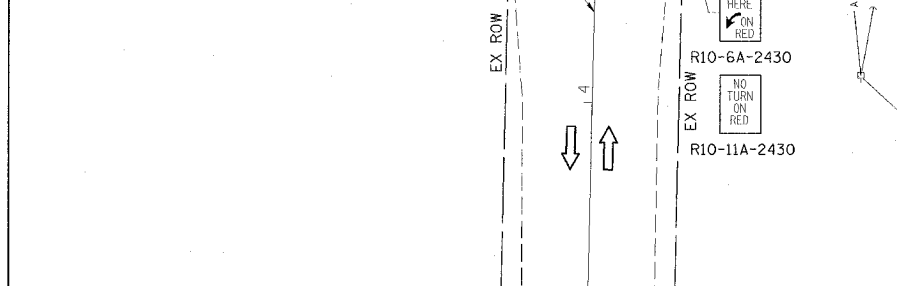
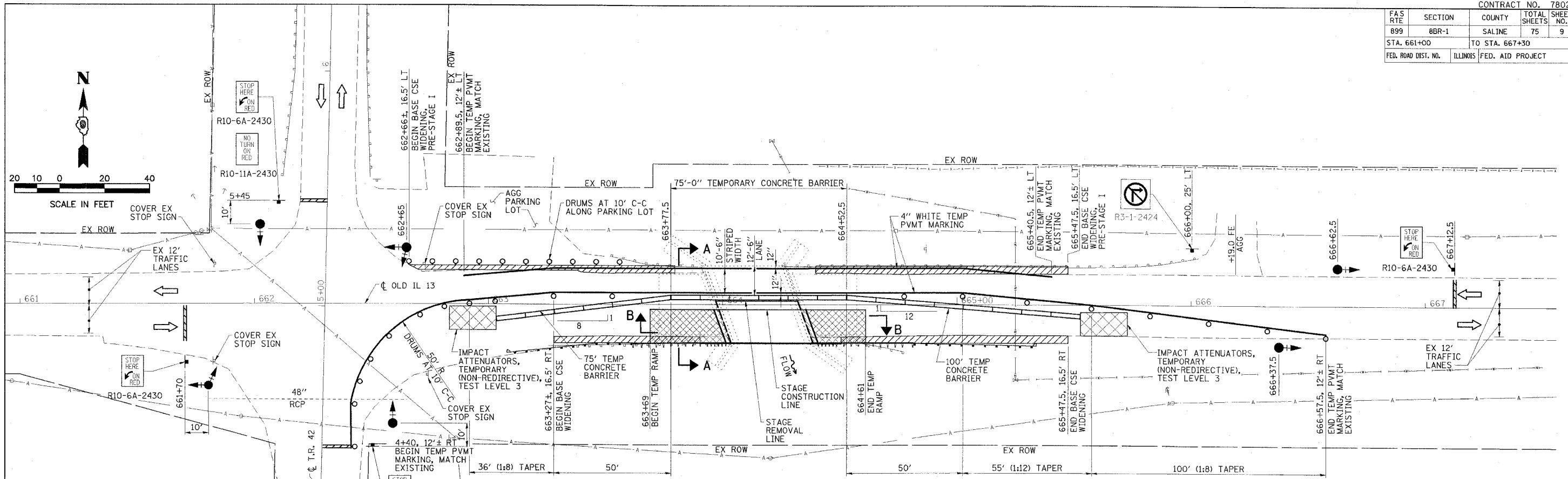
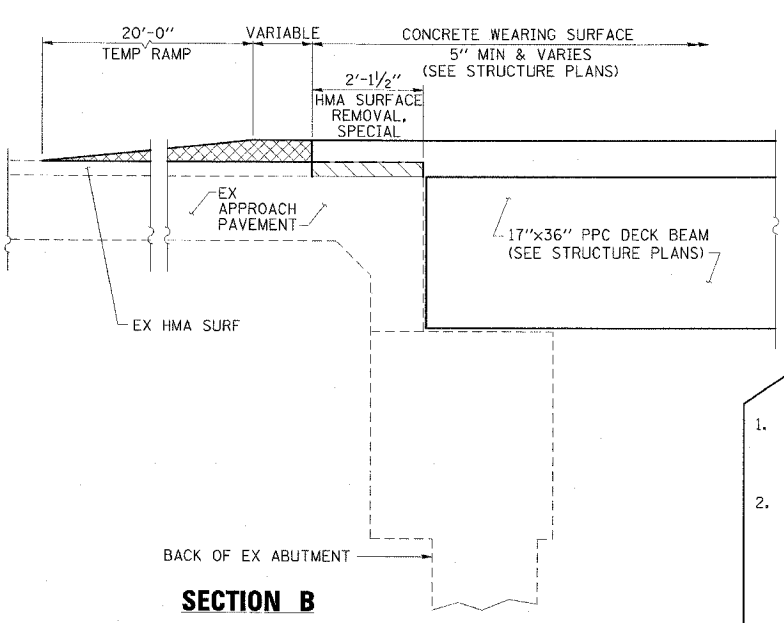
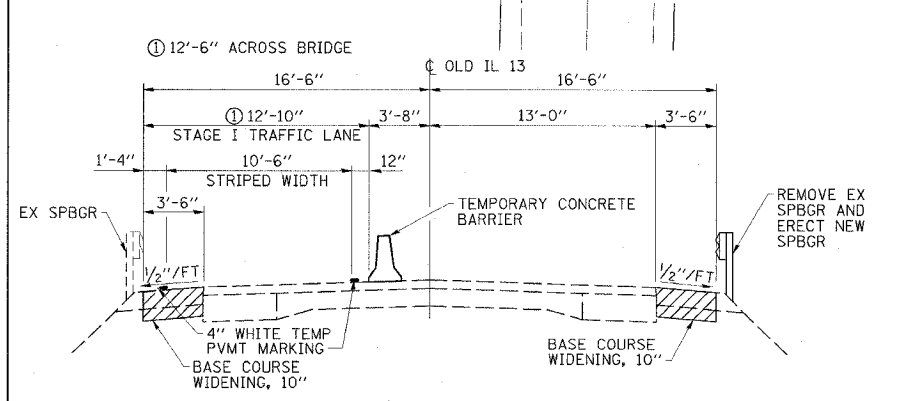




FAS RTE	SECTION	COUNTY	TOTAL SHEETS	SHEET NO.
899	8BR-1	SALINE	75	9
STA. 661+00		TO STA. 667+30		
FED. ROAD DIST. NO.		ILLINOIS	FED. AID PROJECT	



- LEGEND**
- TRAFFIC SIGNAL WITH BACKPLATE, SIGNAL DIRECTION INDICATED
 - HMA SURFACE REMOVAL, SPECIAL
 - TEMPORARY RAMP
 - BASE COURSE WIDENING, 10"
 - DRUM WITH STEADY BURNING LIGHT



ESCA
CONSULTANTS, INC.

DESIGNED BY: JMS 10/07
 DRAWN BY: CJ/HAS 10/07
 CHECKED BY: DAJ/MTD 01/08
 APPROVED BY: RDP 02/08

SECTION A-A

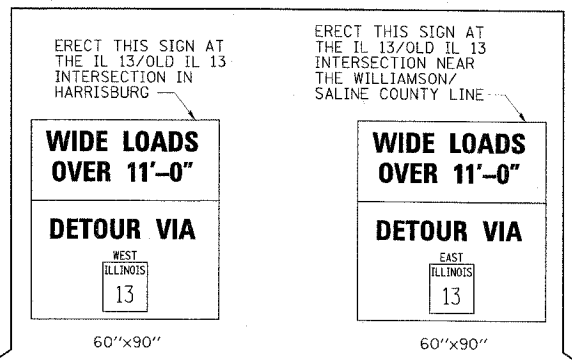
SECTION B

GENERAL NOTES

1. TRAFFIC CONTROL SHALL BE ERCTED AS SHOWN AND ACCORDING TO "TRAFFIC CONTROL AND PROTECTION, STANDARD 701321."
2. SEE SPECIAL PROVISIONS FOR ADDITIONAL TRAFFIC CONTROL REQUIREMENTS.
3. COORDINATE LOCATION OF SIGNALS WITH FINAL WORK AS DIRECTED BY THE ENGINEER.
4. CONSTRUCT TEMPORARY RUMBLE STRIPS AT LOCATIONS SHOWN ON STANDARD 701321.
5. THE DIMENSION SHOWN ON THE WIDTH RESTRICTION SIGN (W12-1102(O)-48) SHOWN ON STANDARD 701321 SHALL BE 11'-0" FOR STAGE I CONSTRUCTION.
6. TRAFFIC CONTROL BEYOND THE STOP BARS ON THE T.R. 42 SHALL BE ERCTED AS SHOWN ON STANDARD 701321 FOR THE MAIN ROADWAY. THIS INCLUDES SIGNS, DETECTOR LOOPS, AND RUMBLE STRIPS. ADDITIONALLY, AN ADVANCE ARROW SIGN (W6-5) SHALL BE MOUNTED UNDER EACH WIDTH RESTRICTION SIGN ON T.R. 42. THE COST OF THIS WORK SHALL BE INCLUDED IN THE COST OF TRAFFIC CONTROL AND PROTECTION, STANDARD 701321 (SPECIAL).

SCHEDULE OF QUANTITIES

TEMPORARY CONCRETE BARRIER			
STATION TO	STATION	FEET	
663+02	665+52	250	
		TOTAL -	250
TEMPORARY BRIDGE TRAFFIC SIGNALS - 1 EACH			
TEMPORARY RUMBLE STRIPS - 12 EACH			
IMPACT ATTENUATORS, TEMPORARY (NON-REDIRECTIVE), TEST LEVEL 3 - 2 EACH			



DETOUR NOTES

1. THE CONTRACTOR SHALL FURNISH THE POSTS AND ERCT THE SIGNS AT THE LOCATIONS DIRECTED BY THE ENGINEER. ALL SIGNS SHALL BE POST MOUNTED AND SHALL REMAIN IN PLACE THROUGHOUT STAGE CONSTRUCTION OPERATIONS.
2. THE ABOVE NOTED WORK, INCLUDING SIGNS, POSTS, HARDWARE, AND LABOR SHALL BE INCLUDED IN THE CONTRACT UNIT PRICE, EACH, FOR TRAFFIC CONTROL AND PROTECTION, STANDARD 701321 (SPECIAL) AND NO OTHER COMPENSATION WILL BE ALLOWED.

WIDE LOAD DETOUR

STAGE I CONSTRUCTION
FAS RTE 899 (OLD IL 13)
SECTION 8BR-1
SALINE COUNTY