

STATE OF ILLINOIS
DEPARTMENT OF TRANSPORTATION

ROUTE NO.	SECTION	COUNTY	SHEETS	SHEET	SHEET NO.
FAS 899	8BR-1	SALINE	75	20	13 SHEETS

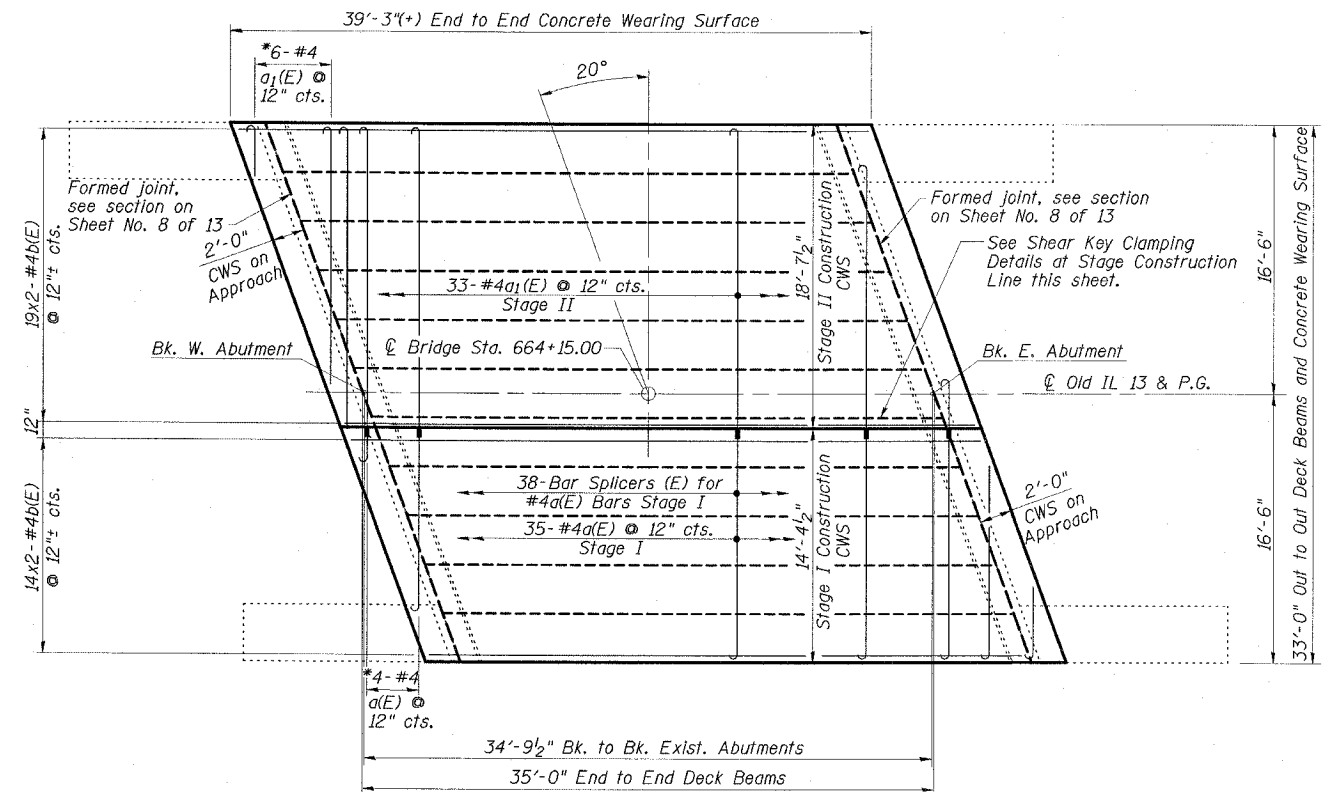
78028



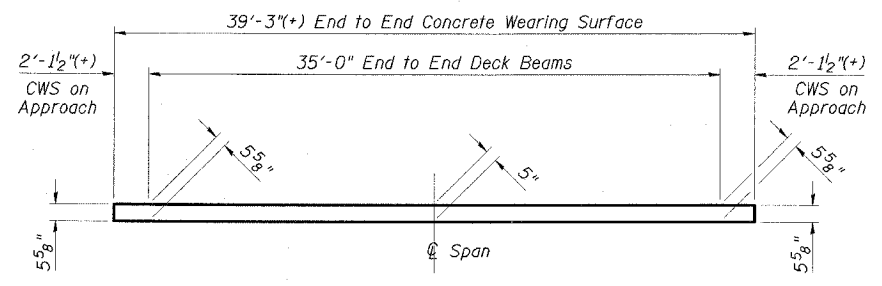
* Order bars full length. Cut to fit skew and use remainder of bars at other end of deck

Note:
Reinforcement bars designated (E) shall be epoxy coated. Bars indicated thus 14x2-#4 etc. indicates 14 lines of bars with 2 lengths per line. For remainder of superstructure details, see drawings 6 thru 8 of 13.

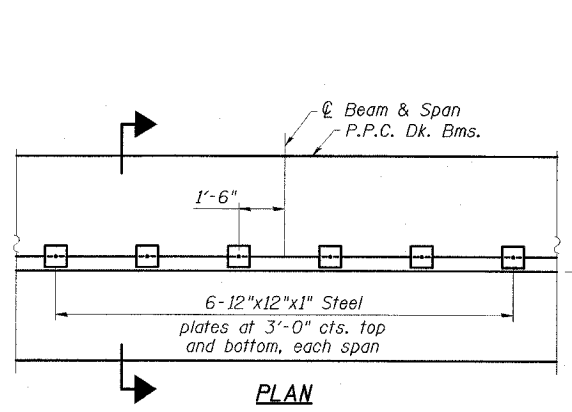
MIN. BAR LAP
#4 bar = 1'-8"



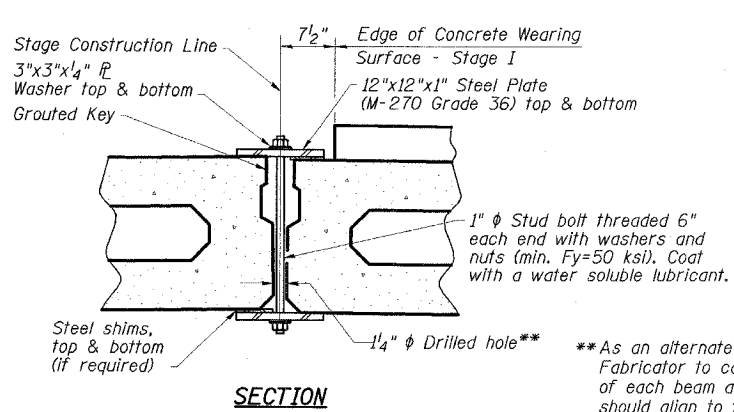
PLAN - WEARING SURFACE



REINFORCED CONCRETE WEARING SURFACE PROFILE
(At edge of bridge deck)



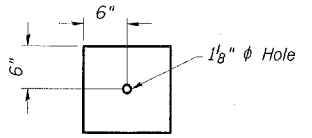
PLAN



SECTION

SHEAR KEY CLAMPING DETAILS

Note:
See Stage Construction Details for traffic lanes. Cost is included with Precast Prestressed Concrete Deck Beams.

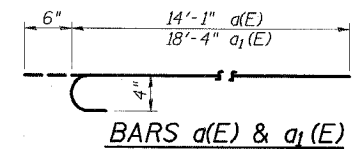


CLAMPING PLATE

**As an alternate to the drilled holes, the Contractor may request the Fabricator to cast 2" diameter semi-circular recesses in the sides of each beam adjacent to the stage construction line. These recesses should align to form a hole at the appropriate location for the clamping device bolts. If the Contractor elects to use this alternate, the details shall be identified on the shop drawings.

**CONCRETE WEARING SURFACE
BILL OF MATERIAL**

Bar No.	Size	Length	Shape
a(E)	39 #4	14'-7"	
a1(E)	39 #4	18'-10"	
b(E)	66 #4	20'-4"	
Reinforcement Bars, Epoxy Coated			Pound 1770
Concrete Wearing Surface, 5"			Sq. Yd. 144
Bridge Deck Grooving			Sq. Yd. 136
Bar Splicers			Each 38
Protective Coat			Sq. Yd. 144



BARS a(E) & a1(E)

ESCA
CONSULTANTS, INC.

DESIGNED BY:	JMS	09/07
DRAWN BY:	CJ/HAS	09/07
CHECKED BY:	DAJ/ELH	01/08
APPROVED BY:	RDP	01/08

**SUPERSTRUCTURE
OLD IL 13 OVER POSSUM TAIL BRANCH
FAS ROUTE 899 - SECTION 8BR-1
SALINE COUNTY
STATION 664+15.00
STRUCTURE NO. 083-0035**