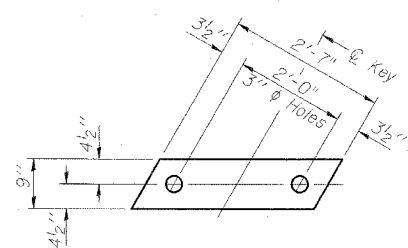


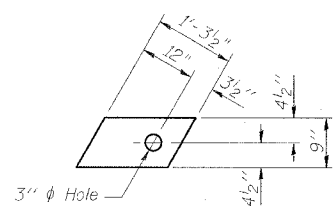
STATE OF ILLINOIS
DEPARTMENT OF TRANSPORTATION

ROUTE NO.	SECTION	COUNTY	PERCENT	SHEET	SHEET NO.
FAS 899	8BR-1	SALINE	75	22	13 SHEETS
FED. ROAD DIST. NO.		SHEETS		FED. AID PROJECT	

78028

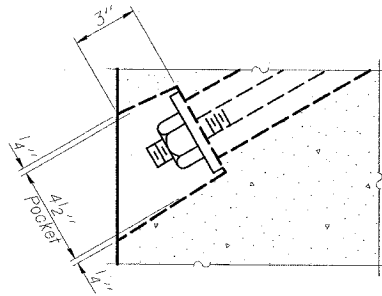


FABRIC BEARING PAD
(Interior)

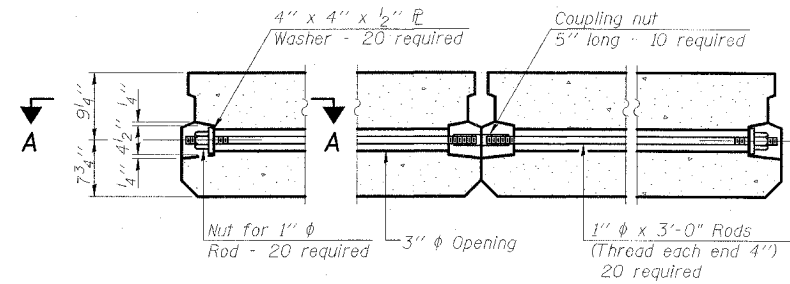


FABRIC BEARING PAD
(Exterior)

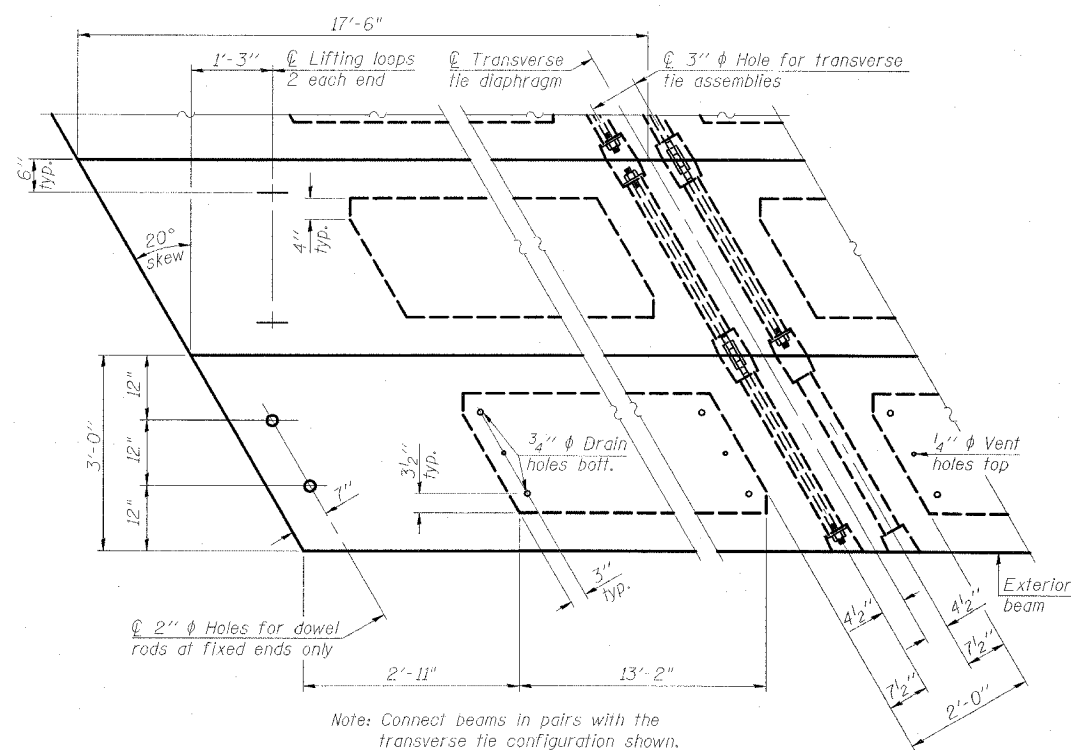
FIXED



SECTION A-A

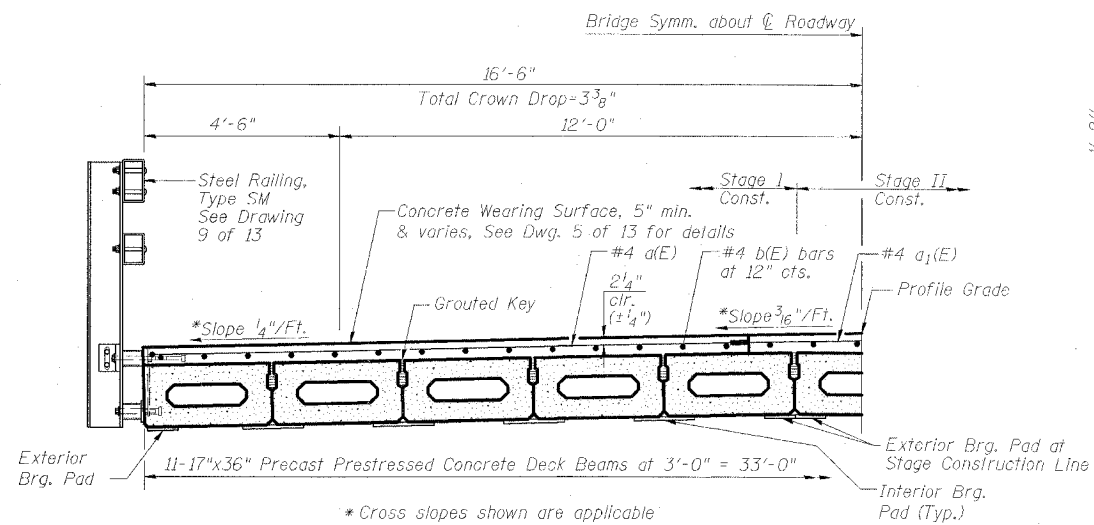


TYPICAL TRANSVERSE TIE ASSEMBLY



Note: Connect beams in pairs with the transverse tie configuration shown.

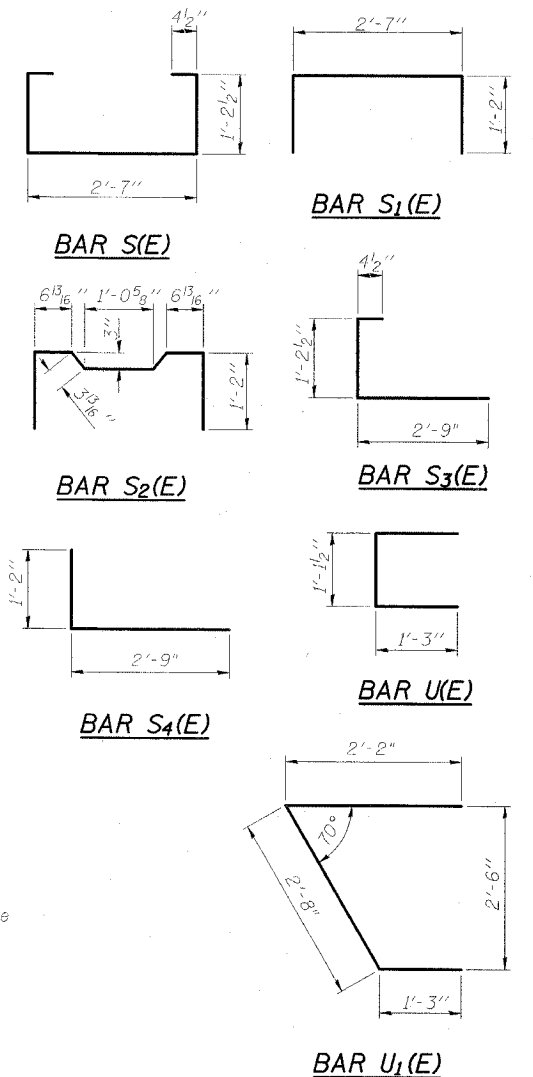
PLAN VIEW



HALF CROSS SECTION
(Looking West)

NOTES

Prestressing steel shall be uncoated high strength, low relaxation 7-wire strand, Grade 270. The nominal diameter shall be 1/2" and the nominal cross-sectional area shall be 0.153 sq. in. The 1" rods in the transverse tie assembly shall be tightened to a snug fit and the threads set. Pockets on exterior faces of bridge shall be filled with grout after transverse tie assembly is in place. Reinforcement bars shall conform to ASTM A 706 (IL MOD), Grade 60. (See Special Provisions) Two 1/8" fabric adjusting shims of the dimensions of the exterior bearing pad shall be provided for each bearing pad location. A minimum 2 1/2" lifting pin shall be used to engage the lifting loops during handling. Corrosion Inhibitor, per Article 1020.05(b)(12) and 1021.06 of the Standard Specifications, shall be used in the concrete for precast prestressed concrete deck beams. Compressive strength of prestressed concrete, f'c, shall be 6000 psi. Compressive strength of prestressed concrete at release, f'ci, shall be 5000 psi. See Dwg. 2 of 13 for locations of rail anchors and additional notes.



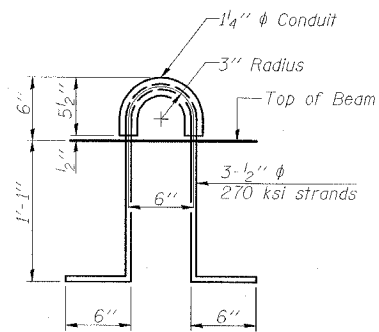
BILL OF MATERIAL

Item	Unit	Quantity
Precast Prestressed Conc. Deck Bms. (17' Depth)	Sq. Ft.	1155

SUPERSTRUCTURE DETAILS
OLD IL 13 OVER POSSUM TAIL BRANCH
FAS ROUTE 899 - SECTION 8BR-1
SALINE COUNTY
STATION 664+15.00
STRUCTURE NO. 083-0035

ESCA
CONSULTANTS, INC.

DESIGNED BY:	JMS	09/07
DRAWN BY:	CJ	09/07
CHECKED BY:	DAJ/ELH	01/08
APPROVED BY:	RDP	01/08



LIFTING LOOP DETAIL