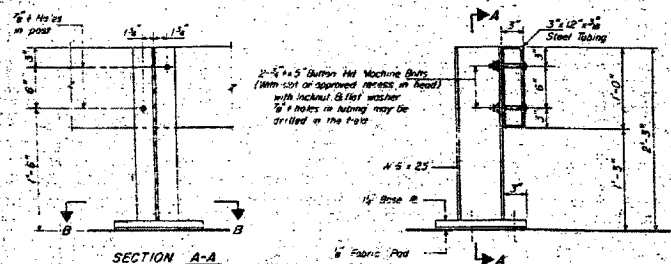


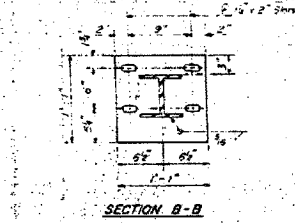
CONTRACT NO. 78028				
FAS RTE	SECTION	COUNTY	TOTAL SHEETS	SHEET NO.
899	8BR-1	SALINE	75	33
STA.		TO STA.		
FED. ROAD DIST. NO.		ILLINOIS FED. AID PROJECT		

STATE OF ILLINOIS  
DEPARTMENT OF TRANSPORTATION

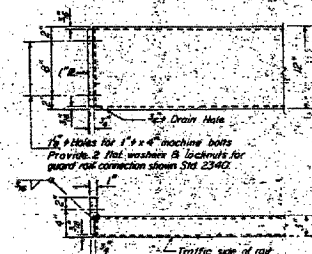
DATE	BY	NO.	REV.
MAY 20 1979	SAVINE	19	17
7 sheets			



SECTION AT RAIL POST



SECTION B-B



END OF RAIL DETAILS

**NOTES**

All low structural steel tubing shall conform to the requirements of ASTM designation A-500 Grade B Structural Steel Tubing.

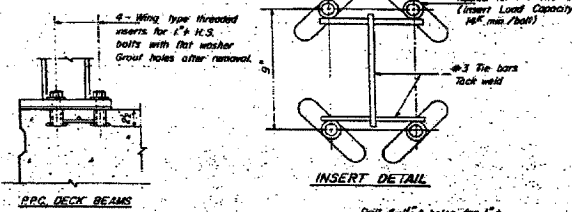
All other steel shapes and plates shall conform to the requirements of AASHTO M-83 except posts shall conform to AASHTO M-223 Grade 30.

Bolts, cap screws, and nuts shall conform to the requirements of ASTM designation A-307 except for high strength bolts, threaded rods, nuts and washers noted which shall conform to AASHTO M-164.

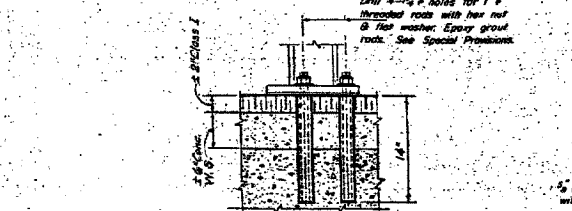
The bridge rail shall receive one shop coat of a steel prime paint.

The 1/2 inch high strength bolts or threaded rods used to connect the railposts shall be tightened in accordance with Article 50704(g)(3) of the Standard Specification.

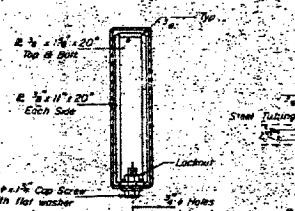
See Special Provisions for Temporary Bridge Rail.



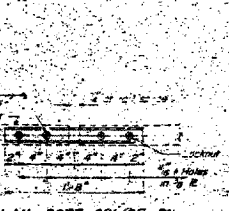
INSERT DETAIL



NEW & EXISTING DECK ANCHORAGE DETAILS



SECTION AT RAIL SPLICE



PLAN-BOTTOM SPLICE PL TYPICAL

**BILL OF MATERIAL**

Item	Unit	Quantity
Temporary Bridge Rail	Line Ft	33

TEMPORARY BRIDGE RAIL  
F.A.R.T. III SECTION (B-1) DR  
SALINE COUNTY  
STA. 664+15.00

DESIGNED Dale F. Schaub  
CHECKED [Signature]  
DRAWN E.V. Taylor  
CHECKED [Signature]

APPROVED [Signature]

R-25 8-1-79 (17'-6" Maximum Post Spacing)