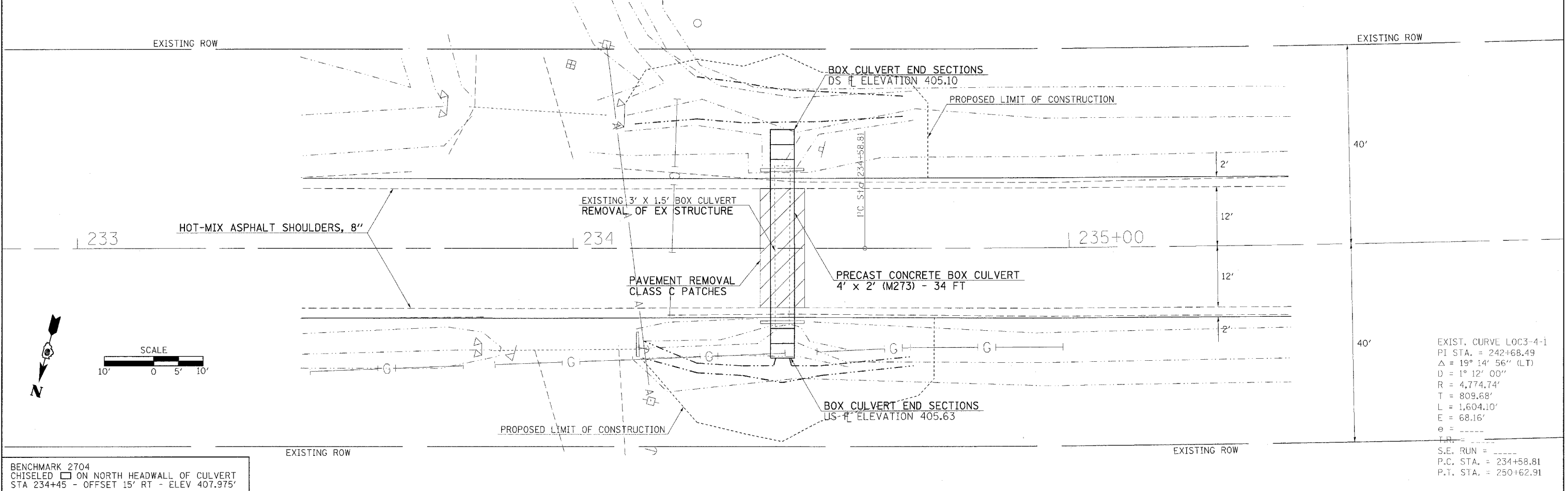


BENCHMARK 3870
 CHISELED \square ON SE WING OF ENTRANCE CULVERT
 STA 166+06 - OFFSET 23' RT - ELEV 401.762'



BENCHMARK 2704
 CHISELED \square ON NORTH HEADWALL OF CULVERT
 STA 234+45 - OFFSET 15' RT - ELEV 407.975'

EXIST. CURVE LOC3-4-1
 PI STA. = 242+68.49
 Δ = 19° 14' 56" (LT)
 D = 1° 12' 00"
 R = 4,774.74'
 T = 809.68'
 L = 1,604.10'
 E = 68.16'
 e = -----
 F.R. = -----
 S.E. RUN = -----
 P.C. STA. = 234+58.81
 P.T. STA. = 250+62.91

FILE NAME = c:\projects\981907\981907p1.m32	USER NAME = thomashf	DESIGNED - ---	REVISED - ---	STATE OF ILLINOIS DEPARTMENT OF TRANSPORTATION	PLAN VIEW - LOCATIONS 3 & 4	F.A.P. RTE. 881	SECTION D9 SAFETY FY08-1	COUNTY VARIOUS	TOTAL SHEETS 64	SHEET NO. 14		
PLOT SCALE = 10.0000" / IN.	CHECKED - ---	REVISED - ---	SCALE: 1" = 10'			SHEET NO. ___ OF ___ SHEETS	STA. _____ TO STA. _____	FED. ROAD DIST. NO. _ ILLINOIS FED. AID PROJECT				
PLOT DATE = 3/18/2008	DATE - -----	REVISED - ---	CONTRACT NO. 78038									