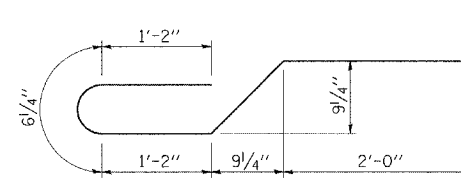
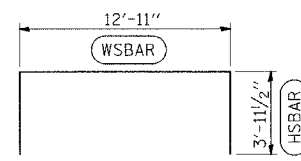


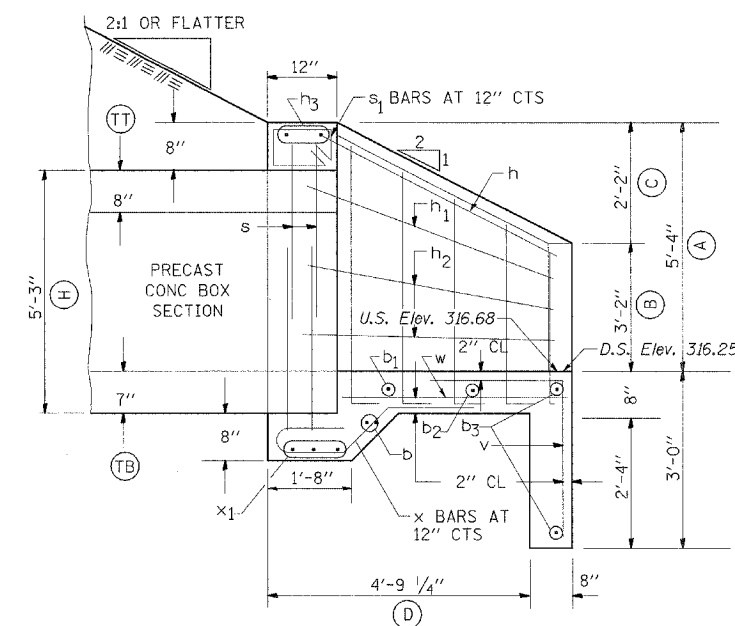
END ELEVATION



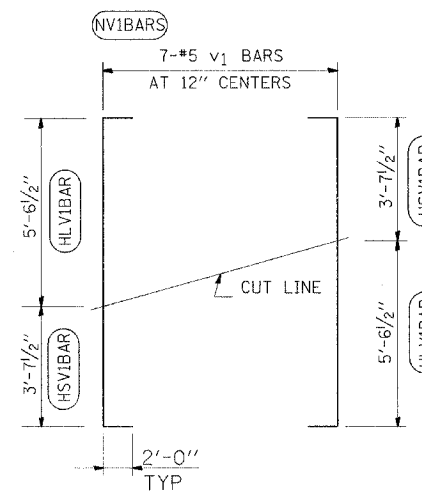
BAR x



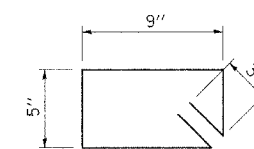
BAR s
(20" BAR LAP)



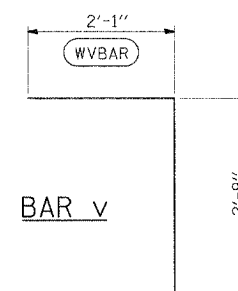
HALF SIDE ELEVATION



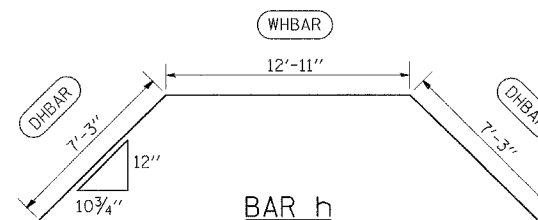
FIELD CUTTING DIAGRAM
BARS v1



BAR s1



BAR v



BAR h

BILL OF MATERIAL

BAR SIZE	NO.	LENGTH	SHAPE
b	#5 2	14'-9"	—
b1	#4 1	17'-8"	—
b2	#4 1	20'-8"	—
b3	#4 2	22'-10"	—
h	#5 1	27'-5"	—
h1	#4 2	6'-9"	—
h2	#4 4	6'-5"	—
h3	#6 2	12'-11"	—
s	#4 4	20'-10"	—
s1	#4 13	2'-10"	—
v	#4 23	4'-10"	—
v1	#5 7	13'-2"	—
w	#4 2	6'-3"	—
x	#4 13	6'-0"	—
x1	#4 3	12'-11"	—
CONC BOX CULVERTS	CU YDS	6.0	
REINFORCEMENT BARS	LBS	520	

NOTES:

TABLE FOR ONE (1) HEADWALL ONLY.
BAR DIMENSIONS ARE OUT TO OUT.

ILLINOIS DEPARTMENT OF TRANSPORTATION
CAST-IN-PLACE END SECTION
DOUBLE 5'X4' BOX @ 0° SKEW
AASHTO M-273

NOTES:

EXPOSED EDGES SHALL BE BEVELED 3/4".
REINFORCEMENT BARS SHALL CONFORM TO THE REQUIREMENTS OF AASHTO M-31, M-42 OR M-53, GRADE 60.
OMIT BELL OR SPIGOT ON END PRECAST BOX CULVERT SECTION.

REVISIONS
DRAWN 2-22-90
REVISED 8-22-94
REVISED
REVISED

FILE NAME =
c:\pr-projects\907\907\907\delm32

USER NAME = thomashf
PLOT SCALE = 50.0000' / IN.
PLOT DATE = 4/25/2000

DESIGNED -
DRAWN -
CHECKED -
DATE -

REVISED -
REVISED -
REVISED -
REVISED -

STATE OF ILLINOIS
DEPARTMENT OF TRANSPORTATION

DETAIL: CAST-IN-PLACE APRON END SECTION STATION 166+22

SCALE: NONE SHEET NO. 1 OF 1 SHEETS STA. TO STA.

F.A.P. RTE.	SECTION	COUNTY	TOTAL SHEETS	SHEET NO.
881	D9 SAFETY FY08-1	VARIOUS	64	28
FED. ROAD DIST. NO. ILLINOIS FED. AID PROJECT			CONTRACT NO. 78038	