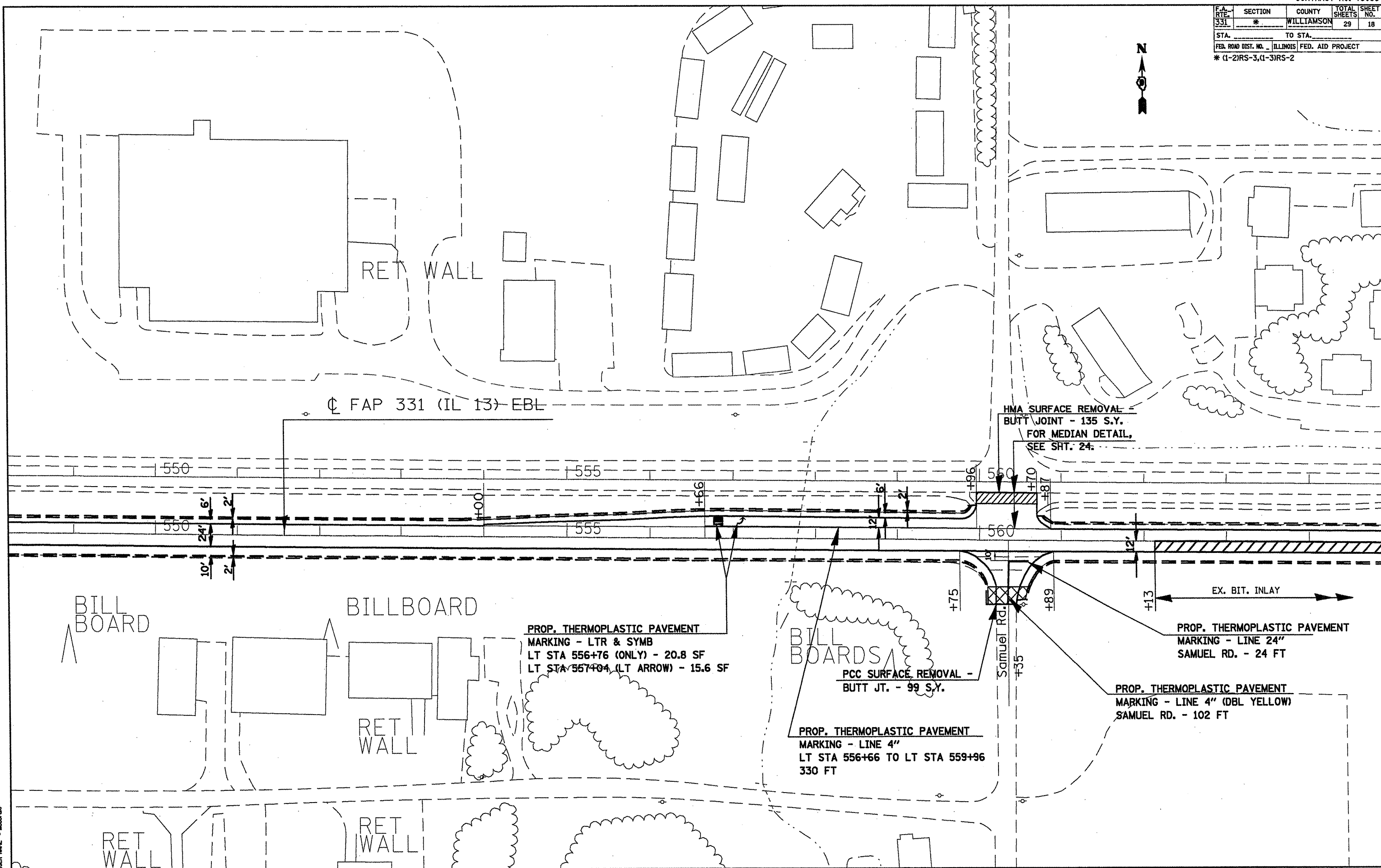


F.A. RTE.	SECTION	COUNTY	TOTAL SHEETS	SHEET NO.
331	*	WILLIAMSON	29	18
STA.		TO STA.		
FED. ROAD DIST. NO.		ILLINOIS FED. AID PROJECT		
* (1-2)RS-3,(1-3)RS-2				



CL FAP 331 (IL 13) EBL

HMA SURFACE REMOVAL -  
 BUTT JOINT - 135 S.Y.  
 FOR MEDIAN DETAIL,  
 SEE SHT. 24.

PROP. THERMOPLASTIC PAVEMENT  
 MARKING - LTR & SYMB  
 LT STA 556+76 (ONLY) - 20.8 SF  
 LT STA 557+04 (LT ARROW) - 15.6 SF

PCC SURFACE REMOVAL -  
 BUTT JT. - 99 S.Y.

PROP. THERMOPLASTIC PAVEMENT  
 MARKING - LINE 4"  
 LT STA 556+66 TO LT STA 559+96  
 330 FT

PROP. THERMOPLASTIC PAVEMENT  
 MARKING - LINE 24"  
 SAMUEL RD. - 24 FT

PROP. THERMOPLASTIC PAVEMENT  
 MARKING - LINE 4" (DBL YELLOW)  
 SAMUEL RD. - 102 FT

EX. BIT. INLAY

Samuel Rd.

BILL BOARD

BILLBOARD

BILLBOARDS

RET WALL

RET WALL

RET WALL

PLOT DATE = 3/19/2008  
 FILE NAME = c:\pvc\joe\78039\78039.dwg  
 PLOT SCALE = 1/8"=1'-0"  
 USER NAME = mcdonald

PLAN LAYOUT - STA. 548+10 TO STA. 565+00