

F.A. RTE.	SECTION	COUNTY	TOTAL SHEETS	SHEET NO.
331	*	WILLIAMSON	29	26
STA. TO STA.				
FED. ROAD DIST. NO. - [ILLINOIS] FED. AID PROJECT				
* (1-2)RS-3,(1-3)RS-2				

# STAGED CONSTRUCTION #2

## NOTES:

1. THE TRAFFIC SIGNALS SHALL BE PUT ON FLASH AND FLAGMEN SHALL BE USED WHEN NEEDED AS DETERMINED BY THE FIELD ENGINEER.(SEE GENERAL NOTES)
2. ON IL. 13 EBL - THE RIGHT THRU LANE SHALL BE CLOSED.
3. ON IL. 148 NBL - THE RIGHT TURN LANE SHALL REMAIN OPEN.
4. ON IL. 148 SBL - ALL THRU LANES CLOSED, THE LEFT LEFT TURN LANE AND RIGHT TURN LANE OPEN.
5. EIGHT MESSAGE BOARDS WILL BE USED ON THIS PROJECT AS SHOWN ON THE STAGE CONSTRUCTION. FOUR ON IL. 13, THREE ON NORTH AND SOUTHBOUND IL. 148. AND ONE SOUTH OF I-57 / IL 148 INTERCHANGE FOR NORTHBOUND LANES.
6. MESSAGE BOARDS TO BE PLACED AS FOLLOWS:  
BOARD #1 - STA. 460+00; BOARD #2 - STA. 595+21; BOARD #3 - STA. 654+40; BOARD #4 - STA. 750+00 EAST OF RAILROAD CROSSING; IL 148 (NB) BOARD #5 - 1/2 MILE SOUTH OF INTERSECTION; BOARD #6 - JUST SOUTH OF THE IL 148 & OLD IL 13 INTERSECTION; IL 148 (SB) BOARD #7 - 1 MILE NORTH OF INTERSECTION. THERE SHALL ALSO BE A MESSAGE BOARD #8 FOR STAGE ONE AND TWO ON I-57 NORTHBOUND JUST SOUTH OF THE IL 148 INTERCHANGE. IT WILL INFORM THE PUBLIC WHEN IL 148 IS CLOSED.
7. TYPE III TEMPORARY TAPE SHALL BE USED AT LOCATIONS WHERE LANES ARE USED FOR OTHER THAN NORMAL USAGE. THE WORK AND MATERIAL SHALL BE COVERED UNDER TRAFFIC CONTROL AND PROTECTION, SPECIAL.
8. ON IL 13 WBL - LEFT TURN LANE CLOSED.

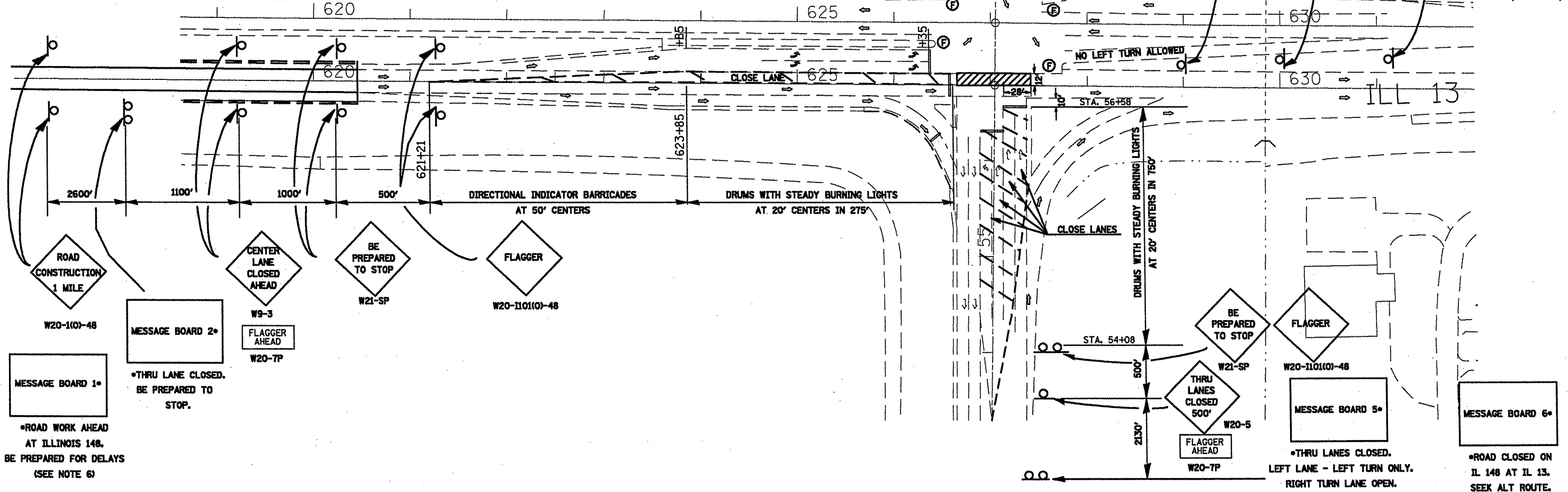
## LEGEND

- (F) FLAGGER (SEE GENERAL NOTES)
- [Hatched Box] AREA OF PCC PAVEMENT 10" CONSTRUCTION

MESSAGE BOARD 7\*  
 \*ROAD WORK AHEAD AT ILLINOIS 148. BE PREPARED TO STOP (PLACE 2640' PRIOR TO INTERSECTION)

MESSAGE BOARD 4\*  
 \*AT ILLINOIS 148 LEFT TURN LANE CLOSED. SEEK ALT ROUTES.

MESSAGE BOARD 3\*  
 \*AT ILLINOIS 148 LEFT TURN LANE CLOSED. SEEK ALT ROUTES.



PLOT DATE = 3/21/2008  
 FILE NAME = c:\p\projects\78039\78039.dwg  
 USER = [unclear]  
 PLOTTER = [unclear]