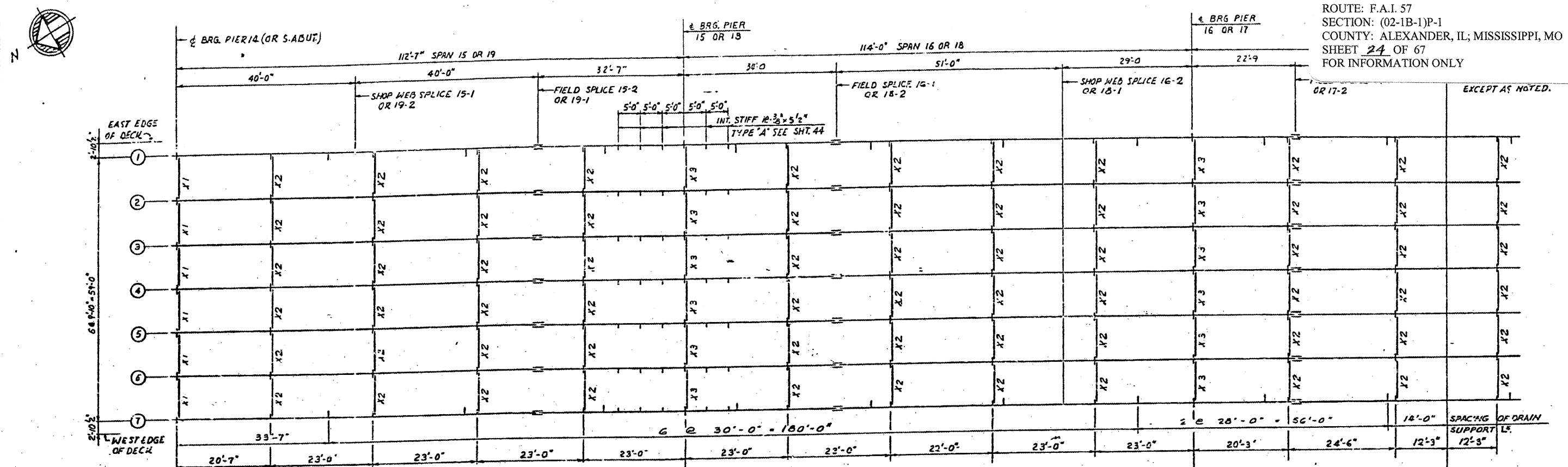
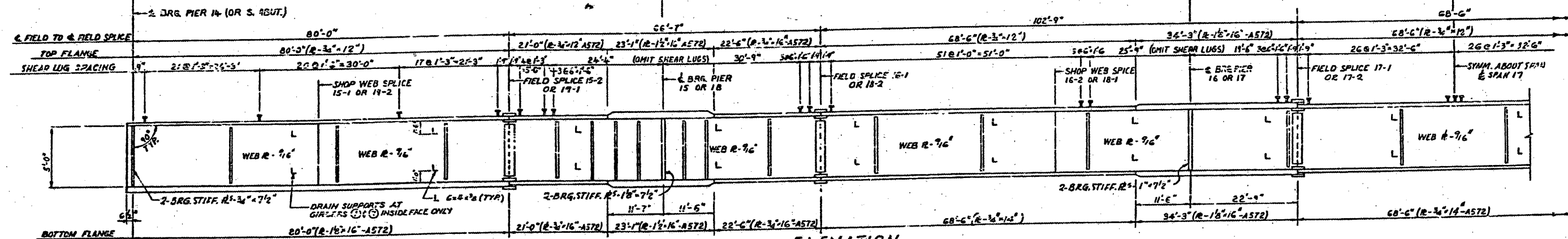


CONTRACT: 78040
 ROUTE: F.A.I. 57
 SECTION: (02-1B-1)P-1
 COUNTY: ALEXANDER, IL; MISSISSIPPI, MO
 SHEET 24 OF 67
 FOR INFORMATION ONLY



STEEL FRAMING PLAN.
 SCALE: 3/32"=1'-0"



ELEVATION
 NO SCALE
 GIRDER (1) SHOWN

NOTES:
 MATERIAL - A36 - EXCEPT AS NOTED.
 ALL DIMENSIONS SHOWN ARE IN
 A HORIZONTAL PLANE.
 SHEAR LUGS ARE TO BE
 FURNISHED AND INSTALLED
 UNDER SECTION (02-1B-1) D.
 SHEAR LUGS ARE TO BE OMITTED AT
 SCUPPER LOCATIONS.

GIRDER ELEVATIONS-FOR FABRICATION ONLY

GIRDER	LOCATION	S.W.S. = SHOP WEB SPLICE F.S. = FIELD SPLICE															
		BRG. PIER 14	S.W.S. 15-1	F.S. 15-2	PIER 15	F.S. 16-1	S.W.S. 16-2	PIER 16	F.S. 17-1	F.S. 17-2	PIER 17	S.W.S. 18-1	F.S. 18-2	PIER 18	F.S. 19-1	S.W.S. 19-2	BRG. S.ABUT.
1		379.882	379.773	377.697	376.692	375.644	374.169	373.316	372.654	370.597	369.876	369.000	367.910	366.445	365.521	364.516	363.130
2		380.036	379.147	377.851	376.346	375.798	374.314	373.470	372.807	370.752	370.050	369.154	367.564	366.599	365.674	364.669	363.283
3		380.190	379.301	378.004	376.499	375.951	374.467	373.623	372.961	370.906	370.203	369.307	367.717	366.752	365.828	364.823	363.437
4		380.343	379.454	378.157	376.652	376.105	374.621	373.777	373.115	371.060	370.357	369.461	367.871	366.906	365.982	364.977	363.591
5		380.190	379.301	378.004	376.499	375.951	374.467	373.623	372.961	370.906	370.203	369.307	367.717	366.752	365.828	364.823	363.437
6		380.036	379.147	377.851	376.346	375.798	374.314	373.470	372.807	370.752	370.050	369.154	367.564	366.599	365.674	364.669	363.283
7		379.882	378.993	377.697	376.692	375.644	374.169	373.316	372.654	370.597	369.876	369.000	367.910	366.445	365.521	364.516	363.130

ELEVATIONS ARE GIVEN TO TOP OF GIRDER WEB PLATE.

FILLET WELD TABLE

FLANGE R THICKNESS	WELD SIZE
OVER 1/2" TO 3/4"	1/4"
OVER 3/4" TO 1 1/2"	5/16"

BRIDGE NO. 1
 STRUCTURE NO. 002-0022
 FOR INFORMATION ONLY

FRAMING PLAN - SPANS 15 TO 19
 F. A. I. RTE. 57 OVER THE MISSISSIPPI RIVER
 PROJECT 1-57-9(5)0
 SECTION (02-1B-1)D
 ALEXANDER COUNTY, ILLINOIS
 MISSISSIPPI COUNTY, MISSOURI
 STA. 1141 + 84.75 TO STA. 1182 + 75.25