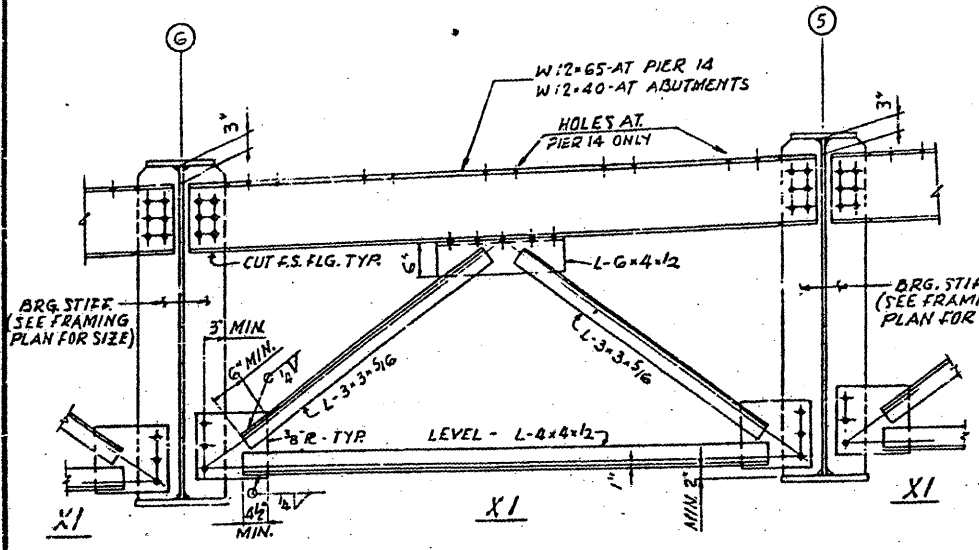
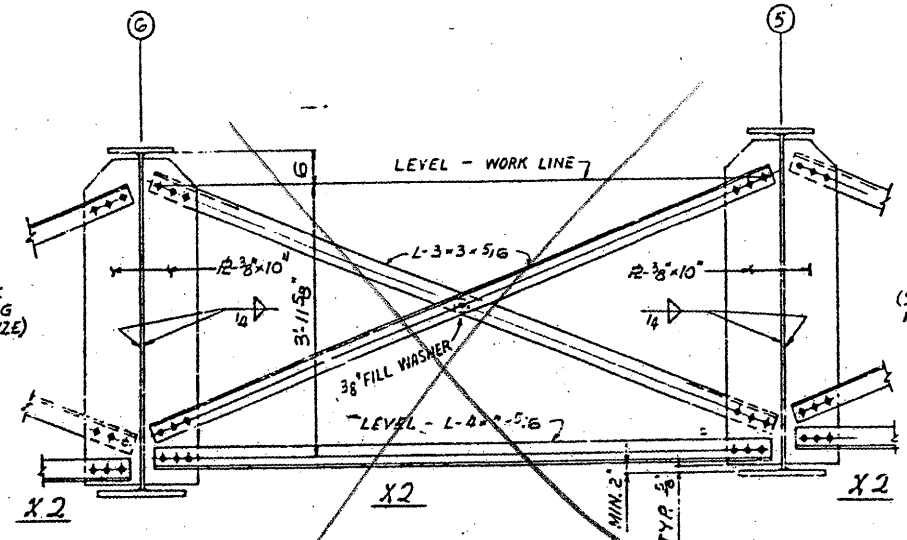


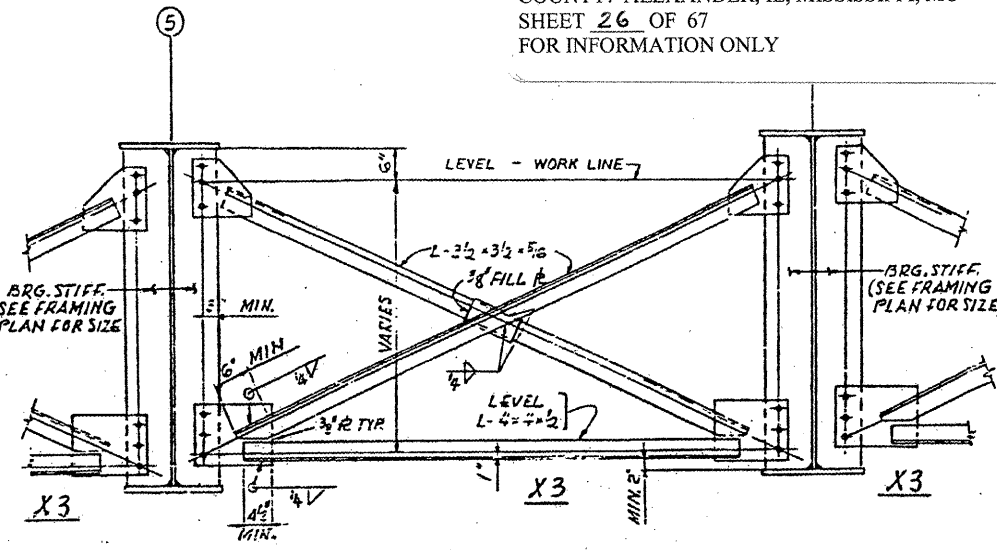
CONTRACT: 78040
 ROUTE: F.A.I. 57
 SECTION: (02-1B-1)P-1
 COUNTY: ALEXANDER, IL; MISSISSIPPI, MO
 SHEET 26 OF 67
 FOR INFORMATION ONLY



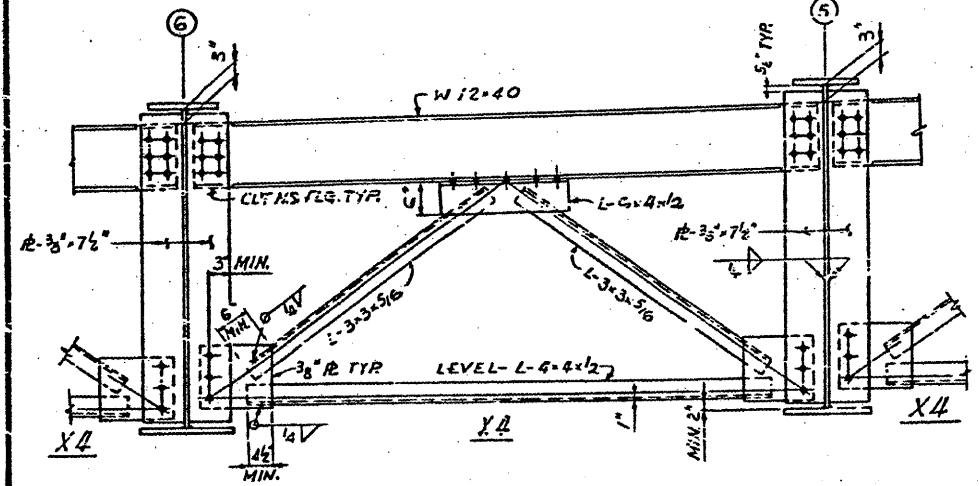
CROSSFRAME X1 (AT ABUTMENT & PIER)
 SCALE: 3/4" = 1'-0"



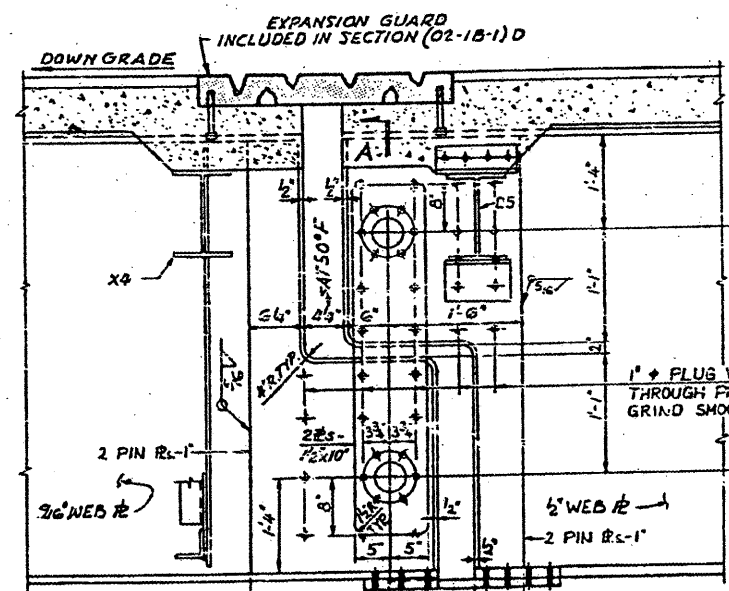
INTERMEDIATE CROSSFRAME X2
 SCALE: 3/4" = 1'-0"



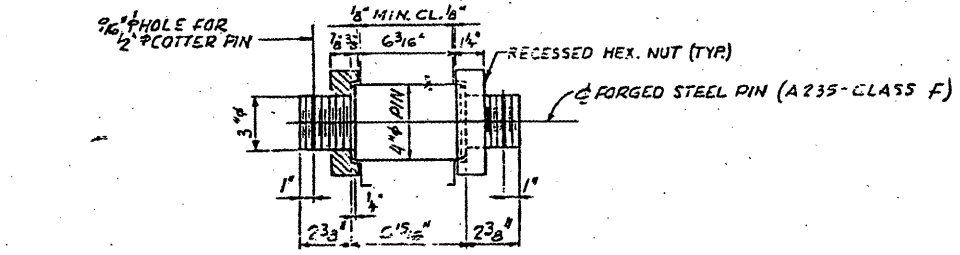
CROSSFRAME X3 (AT PIER)
 SCALE: 3/4" = 1'-0"



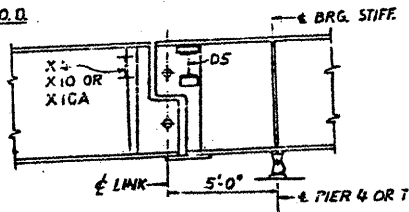
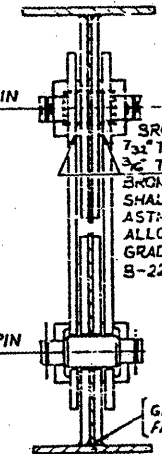
CROSSFRAME X4 (AT LINK)
 SCALE: 3/4" = 1'-0"



LINK DETAILS - SPAN 4

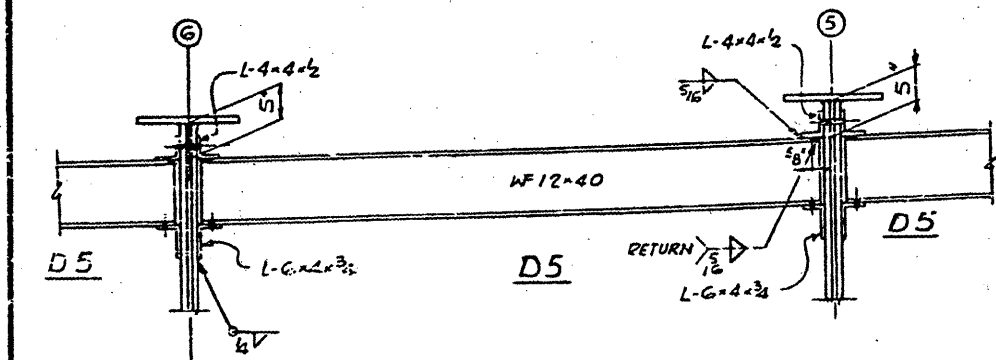


PIN DETAIL
 NUTS SHALL BE SHIPPED UP FINGER TIGHT AGAINST SHOULDERS OF PIN.
 TOTAL NO. OF PINS REQUIRED = 14.



LINK SETTING ELEVATION
 LINK IN SPAN 4 SHOWN. LINK IN SPAN 7 SIMILAR.

NOTE: LINK SHALL BE TRULY VERTICAL AT 50°. CROSSFRAMES & DIAPHRAGMS SHALL BE AT RIGHT ANGLES TO GIRDER FLANGE.



DIAPHRAGM D5 (AT LINK)
 SCALE: 3/4" = 1'-0"

NOTES: ALL FASTENERS SHALL BE 3/4" ASTM A 325 HIGH STRENGTH BOLTS UNLESS NOTED.

BRIDGE NO. 1
 STRUCTURE NO. 002-0022
 FOR INFORMATION ONLY

GIRDER CROSSFRAMES AND LINK DETAILS
 F. A. I. RTE. 57 OVER THE MISSISSIPPI RIVER
 PROJECT 1-57-9 (5) 0
 SECTION (02-1B-1) D
 ALEXANDER COUNTY, ILLINOIS
 MISSISSIPPI COUNTY, MISSOURI
 STA. 1141 + 84.76 TO STA. 1182 + 75.53