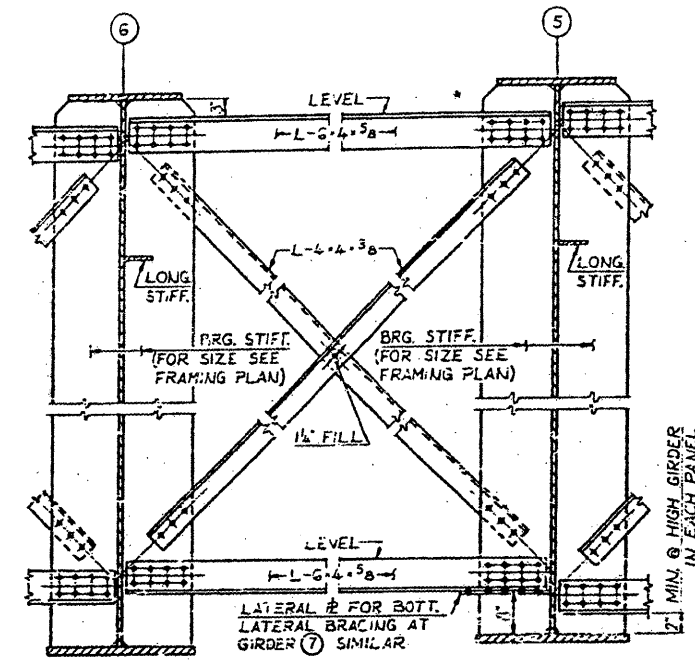
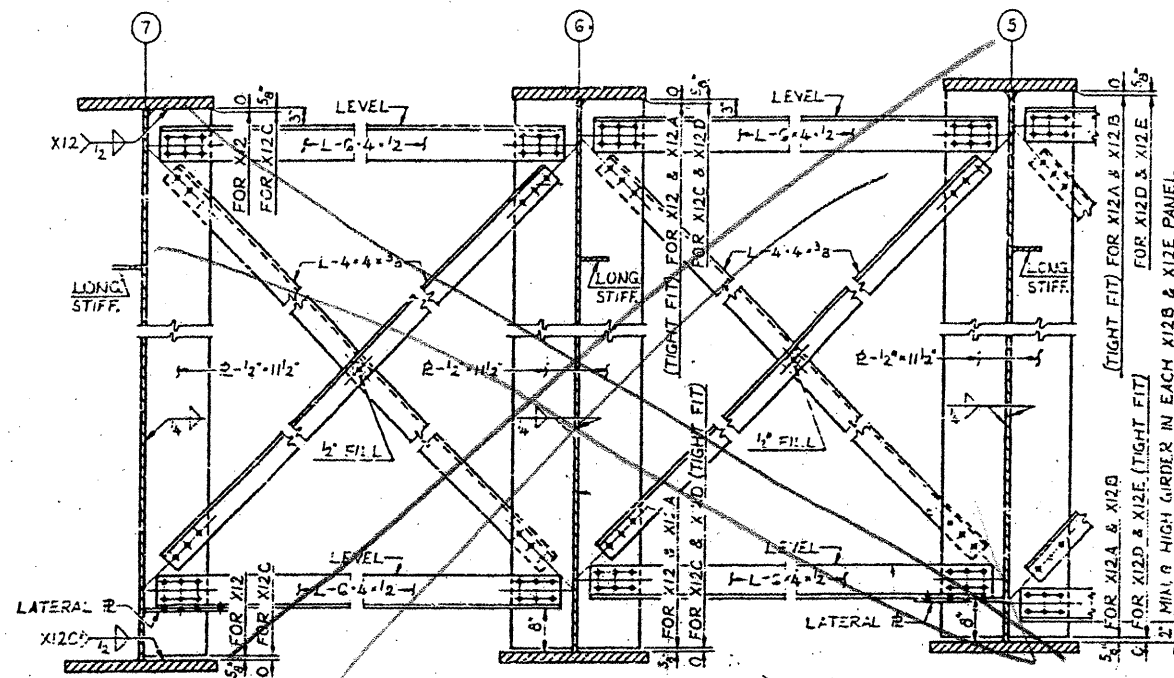


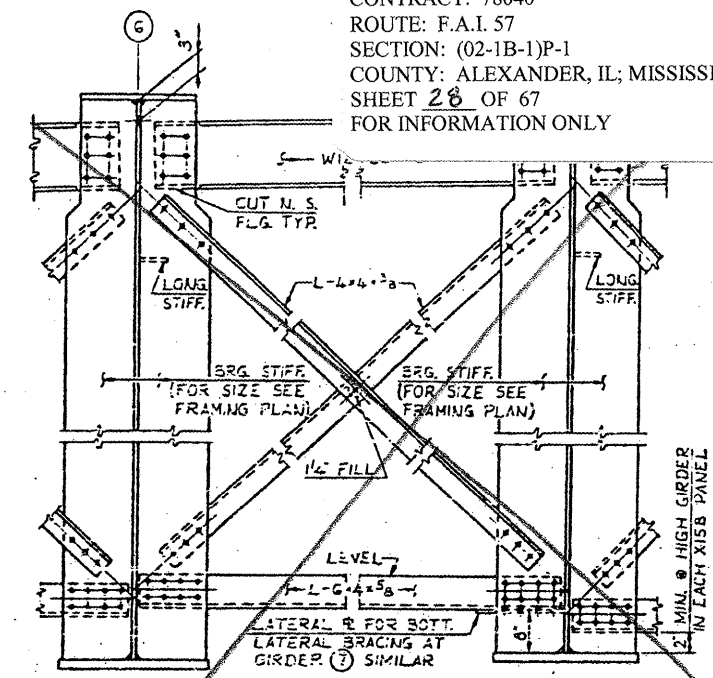
CONTRACT: 78040  
 ROUTE: F.A.I. 57  
 SECTION: (02-1B-1)P-1  
 COUNTY: ALEXANDER, IL; MISSISSIPPI, MO  
 SHEET 26 OF 67  
 FOR INFORMATION ONLY



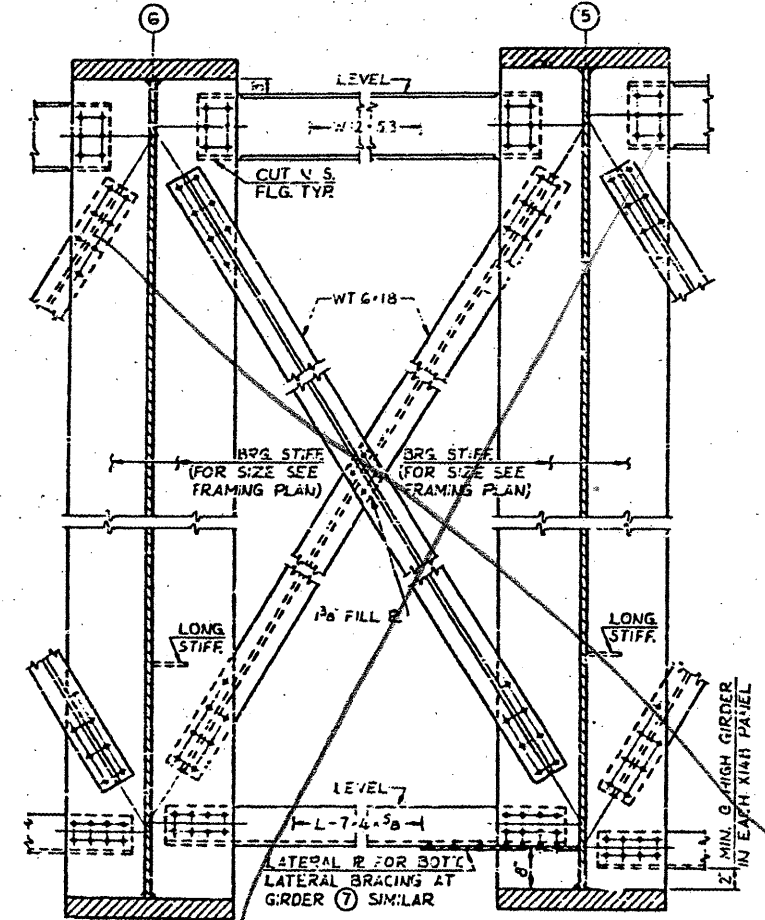
XII  
 X11A  
 X11B  
**CROSSFRAME XII, X11A & X11B**  
 DETAILS OF XII & X11B NOT SHOWN OR NOTED, SIMILAR TO X11A



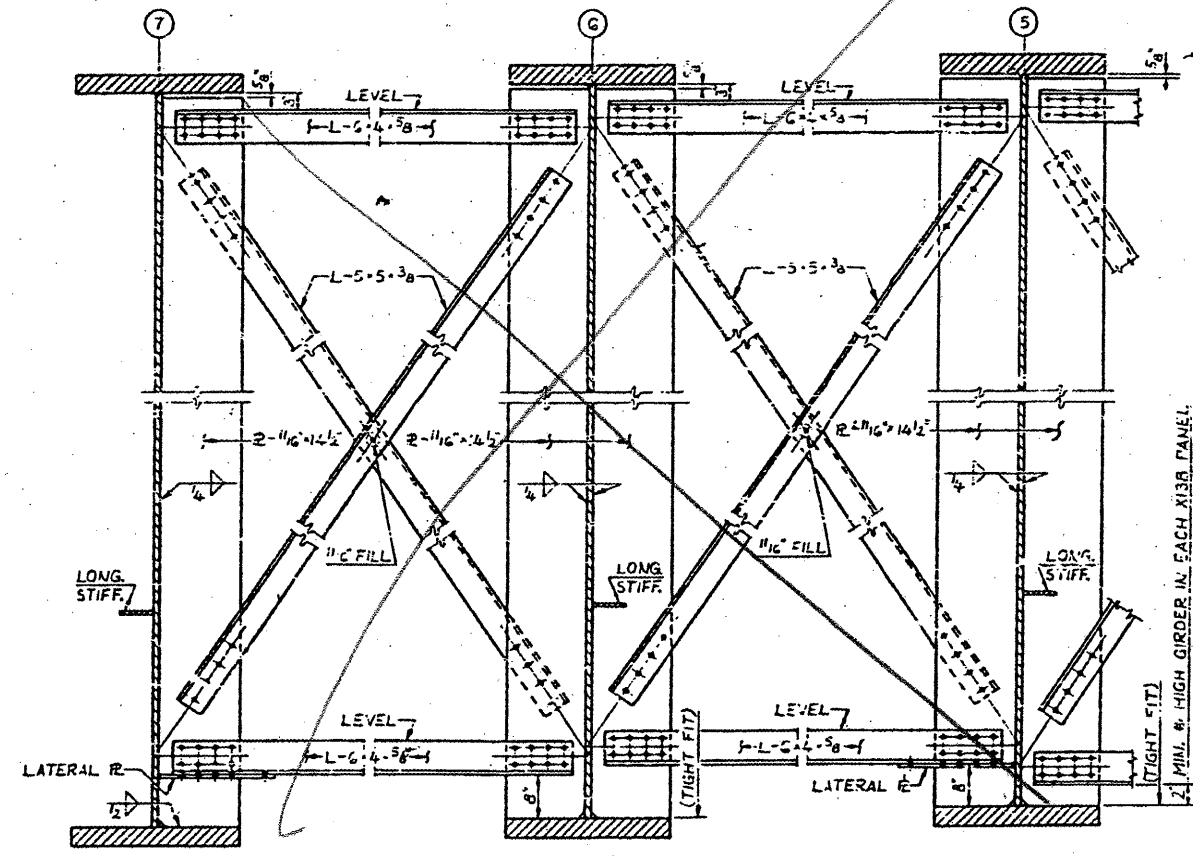
X12 & X12C  
 X12A & X12D  
 X12B & X12E  
**INTERMEDIATE CROSSFRAME X12, X12A, X12B, X12C, X12D & X12E**  
 DETAILS OF X12B & X12E NOT SHOWN OR NOTED, SIMILAR TO X12A & X12D



X15  
 X15A  
 X15B  
**CROSSFRAME X15, X15A & X15B**  
 DETAILS OF X15 & X15B NOT SHOWN OR NOTED, SIMILAR TO X15A



X14  
 X14A  
 X14B  
**CROSSFRAME X14, X14A & X14B**  
 DETAILS OF X14 & X14B NOT SHOWN OR NOTED, SIMILAR TO X14A



X13  
 X13A  
 X13B  
**INTERMEDIATE CROSSFRAME X13, X13A & X13B**  
 DETAILS OF X13B NOT SHOWN OR NOTED, SIMILAR TO X13A

NOTES:  
 ALL MATERIAL ASTM A36 UNLESS NOTED.  
 ALL FASTENERS SHALL BE 7/8\"/>

BRIDGE NO. 1  
 STRUCTURE NO. 002-0022  
 FOR INFORMATION ONLY

STEEL DETAILS - SPANS 8A AND 9C  
 F. A. I. RTE. 57 OVER THE MISSISSIPPI RIVER  
 PROJECT 1-57-9 (5)0  
 SECTION (02-1B-1)D  
 ALEXANDER COUNTY, ILLINOIS  
 MISSISSIPPI COUNTY, MISSOURI  
 STA. 1141 + 84.75 TO STA. 1182 + 75.25