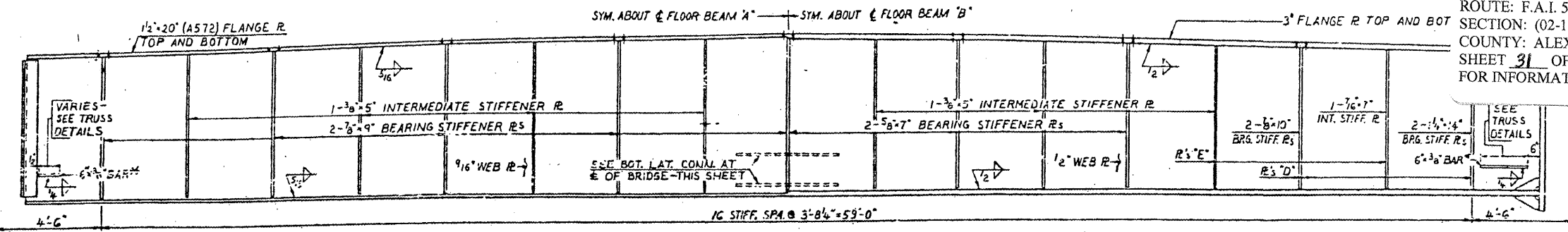


68'-0" C-C TRUSSES

CONTRACT: 78040
ROUTE: F.A.I. 57
SECTION: (02-1B-1)P-1
COUNTY: ALEXANDER, IL; MISSISSIPPI, MO
SHEET 31 OF 67
FOR INFORMATION ONLY

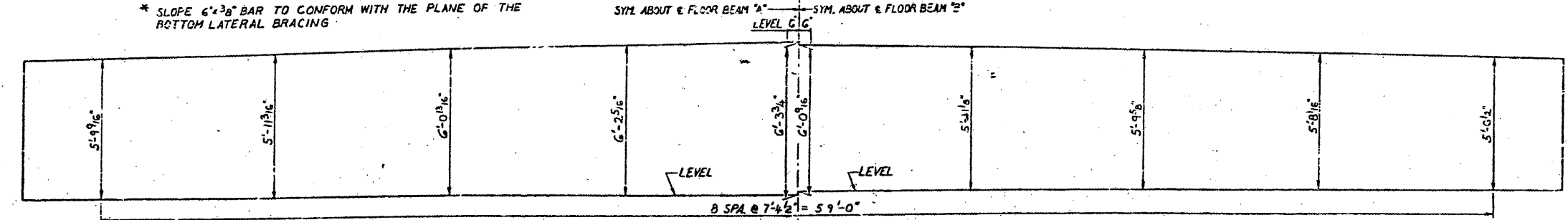


HALF ELEVATION INTERMEDIATE FLOOR BEAM 'A'
SCALE: 3/8"=1'-0"

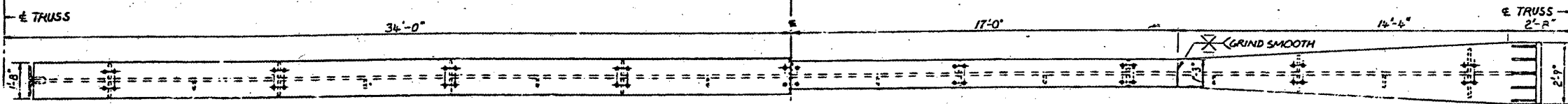
HALF ELEVATION INTERMEDIATE FLOOR BEAM 'B'
SCALE: 3/8"=1'-0"

*SLOPE 6"x3" BAR TO CONFORM WITH THE PLANE OF THE BOTTOM LATERAL BRACING

NOTE: FOR LOCATION OF FLOOR BEAMS 'A' & 'B' SEE FRAMING PLAN, SMT. 49

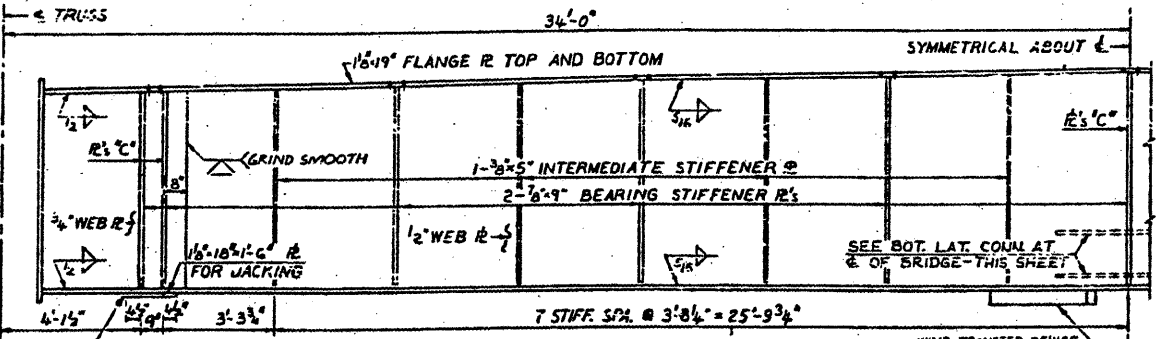


WEB PLATE OFFSETS CAMBERED FOR CROWN & TOTAL DEAD LOAD DEFLECTIONS OF FLOOR BEAMS 'A' & 'B'

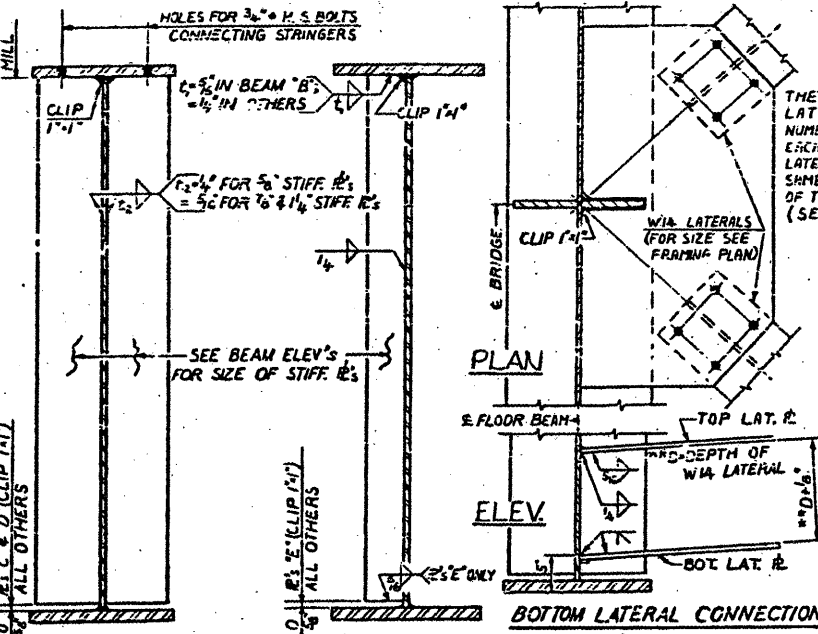


HALF PLAN INTERMEDIATE FLOOR BEAM 'A'
(LATERAL R's NOT SHOWN)
SCALE: 3/8"=1'-0"

HALF PLAN INTERMEDIATE FLOOR BEAM 'B'
(LATERAL R's NOT SHOWN)
SCALE: 3/8"=1'-0"



HALF ELEVATION END FLOOR BEAM
SCALE: 3/8"=1'-0"



BEARING STIFFENER
SCALE: 1"=1'-0"

INTERMEDIATE STIFFENER
SCALE: 1"=1'-0"

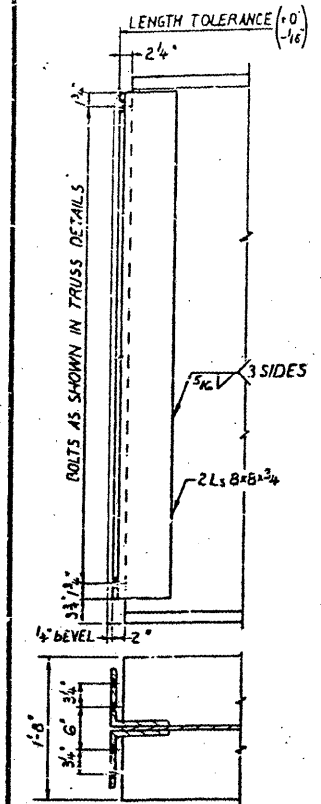
THE THICKNESS OF THE LATERAL R's AND THE NUMBER OF BOLTS CONNECTING EACH W/L LATERAL TO THE LATERAL R's SHALL BE THE SAME AS AT THE CONNECTION OF THE LATERAL TO THE TRUSS. (SEE TRUSS DETAILS)

NOTES:
ALL MATERIAL ASTM A36 UNLESS NOTED.

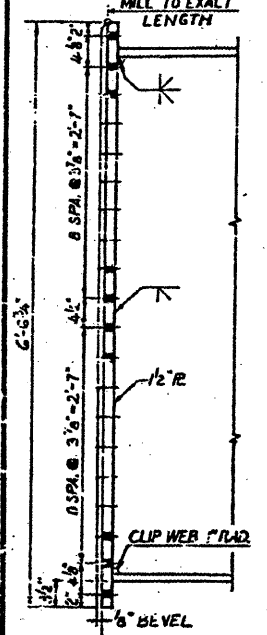
BRIDGE NO. 1
STRUCTURE NO. 002-0022
FOR INFORMATION ONLY

FLOOR BEAMS - SPANS 12, 13 & 14
F.A.I. RTE. 57 OVER THE MISSISSIPPI RIVER
PROJECT 1-57-9 (S10)
SECTION (02-1B-1)D
ALEXANDER COUNTY, ILLINOIS
MISSISSIPPI COUNTY, MISSOURI
STA. 1141 + 84.75 TO STA. 1182 + 75.25

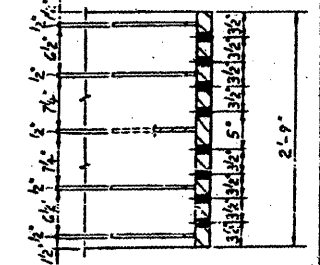
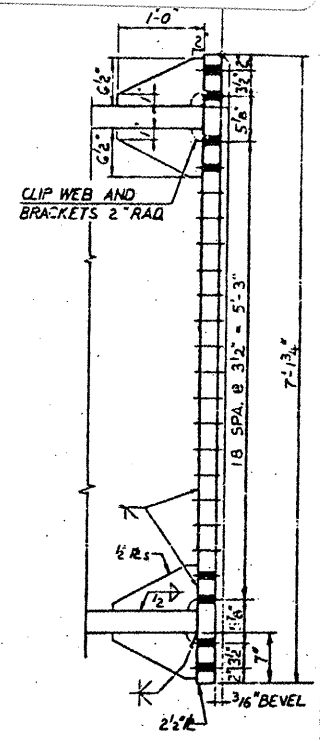
ALFRED BENESCH & COMPANY
CONSULTING ENGINEERS
10 S. WABASH AVE. CHICAGO, ILLINOIS



FLOOR BEAM 'A' CONNECTION
(LATERAL R's NOT SHOWN)
SCALE: 1"=1'-0"



END FLOOR BEAM CONNECTION
SCALE: 1"=1'-0"



FLOOR BEAM 'B' CONNECTION
(LATERAL R's NOT SHOWN)
SCALE: 1"=1'-0"