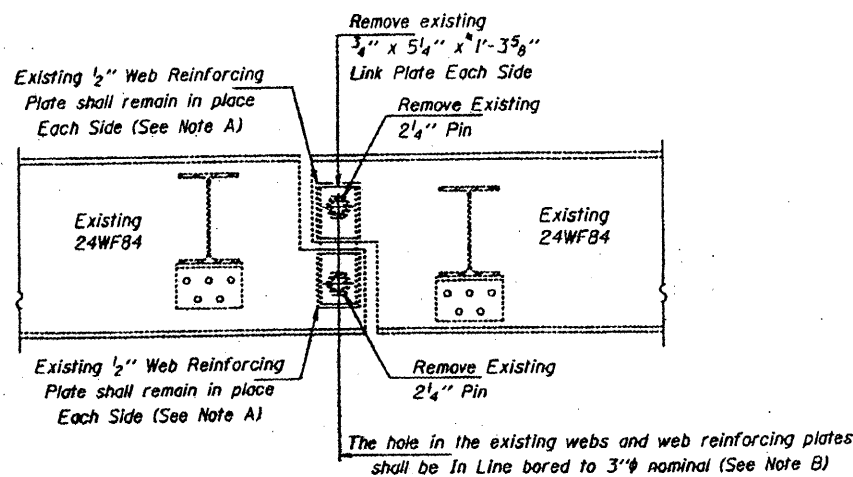


STATE OF ILLINOIS  
DEPARTMENT OF TRANSPORTATION

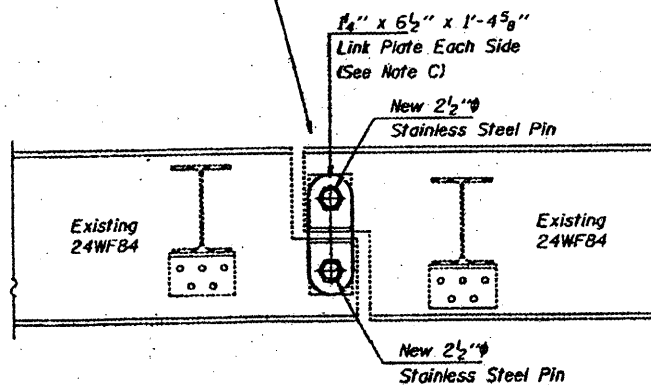
CONTRACT: 78040  
ROUTE: F.A.I. 57  
SECTION: (02-1B-1)P-1  
COUNTY: ALEXANDER, IL; MISSISSIPPI, MO  
SHEET 55 OF 67  
FOR INFORMATION ONLY



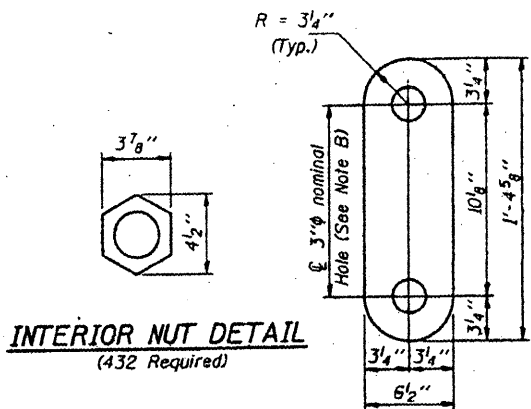
**ELEVATION AT EXISTING PIN ASSEMBLY**  
SPANS 12, 13 AND 14

Any Pins that can be easily removed without damage to the pin shall be salvaged and the Bridge Engineer shall be contacted for disposition. Cost of salvage is included in "Pin and Link Plate Replacement".

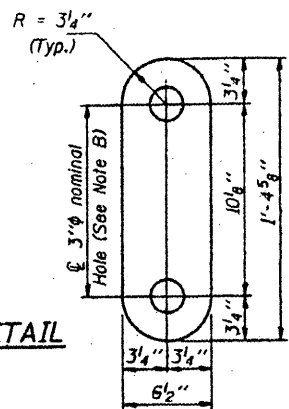
If the existing deck interferes with the new link plates, concrete shall be removed to provide clearance for the new pins and link plates. Cost shall be included in the cost of "Pin and Link Plate Replacement".



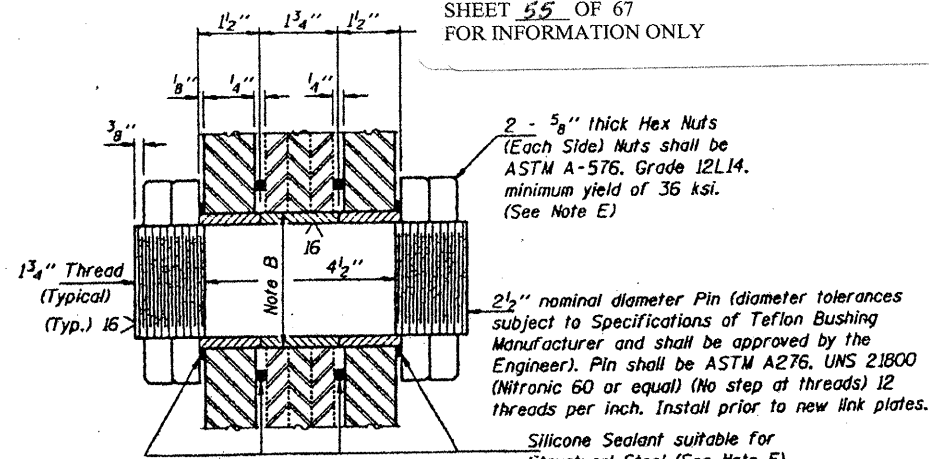
**ELEVATION AT NEW PIN ASSEMBLY**  
SPANS 12, 13 AND 14



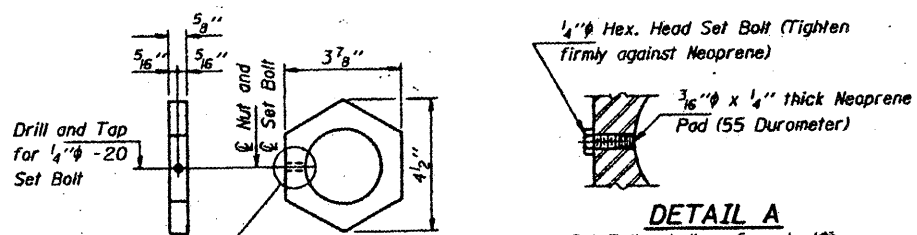
**INTERIOR NUT DETAIL**  
(432 Required)



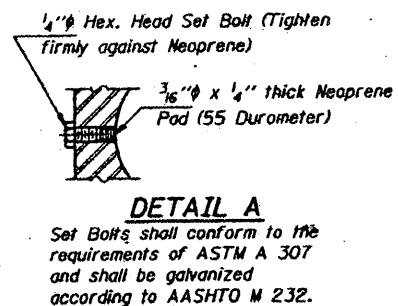
**LINK PLATE DETAIL**  
(216 Required)



**SECTION THRU PIN**  
(216 Required)



**EXTERIOR NUT DETAIL**  
(432 Required)



**DETAIL A**  
Set Bolts shall conform to the requirements of ASTM A 307 and shall be galvanized according to AASHTO M 232.

Notes: For notes A thru F see sheet 2 of 13.

**MAXIMUM REACTIONS AT PIN**

RR	(K)	12.9
Rt	(K)	36.9
Imp.	(K)	11.0
R (Total)	(K)	60.8

DESIGNED	VHV
CHECKED	CME
DRAWN	Paul Summer
CHECKED	VHV CME

FEBRUARY 19, 1998  
 EXAMINED *Josh E. Quinn*  
 ENGINEER OF STRUCTURAL SERVICES  
 PASSED  
 ENGINEER OF BRIDGES AND STRUCTURES

BRIDGE NO. 1  
STRUCTURE NO. 002-0022  
FOR INFORMATION ONLY

**PIN AND LINK PLATE REPLACEMENT**  
SPANS 12, 13 AND 14  
F.A.I. ROUTE 57 SEC. 02-1B-1  
ALEXANDER COUNTY  
STA. 1168+50  
STR. No. 002-0022