

FOR INDEX OF SHEETS, SEE SHEET NO. 3

IL 148 (FAP 726)
TRAFFIC DATA
(2007) (2028)
PC = 2,595 3,300
SU = 125 160
MU = 30 40
ADT = 2,750 3,530

STATION EQUATIONS:

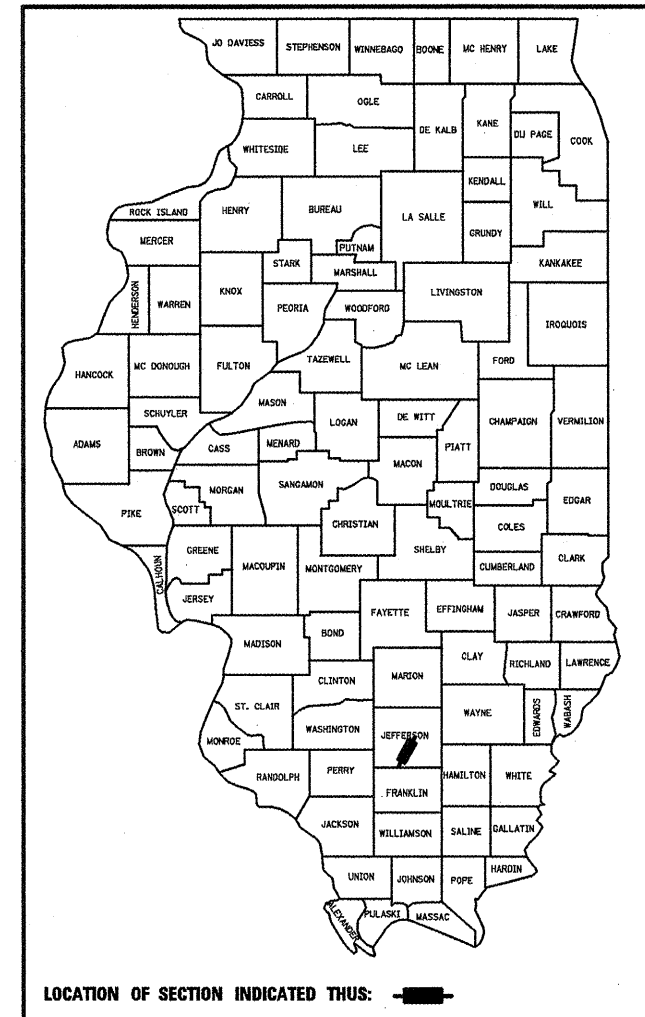
153+41.33 BK = 153+99.30 AH
188+71.88 BK = 187+45.50 AH
222+94.85 BK = 223+03.90 AH
399+56.83 BK = 0+00 AH
42+41.29 BK = 44+46.20 AH
62+28.48 BK = 62+77.20 AH
86+03.40 BK = 39+77.20 AH

STATE OF ILLINOIS
DEPARTMENT OF TRANSPORTATION
DIVISION OF HIGHWAYS
**PROPOSED
HIGHWAY PLANS**

F.A.P. ROUTE 726 (IL 148)
SECTION (119,120)RS-3
PROJECT :ACF-0726(056)
JEFFERSON COUNTY
C-99-025-08

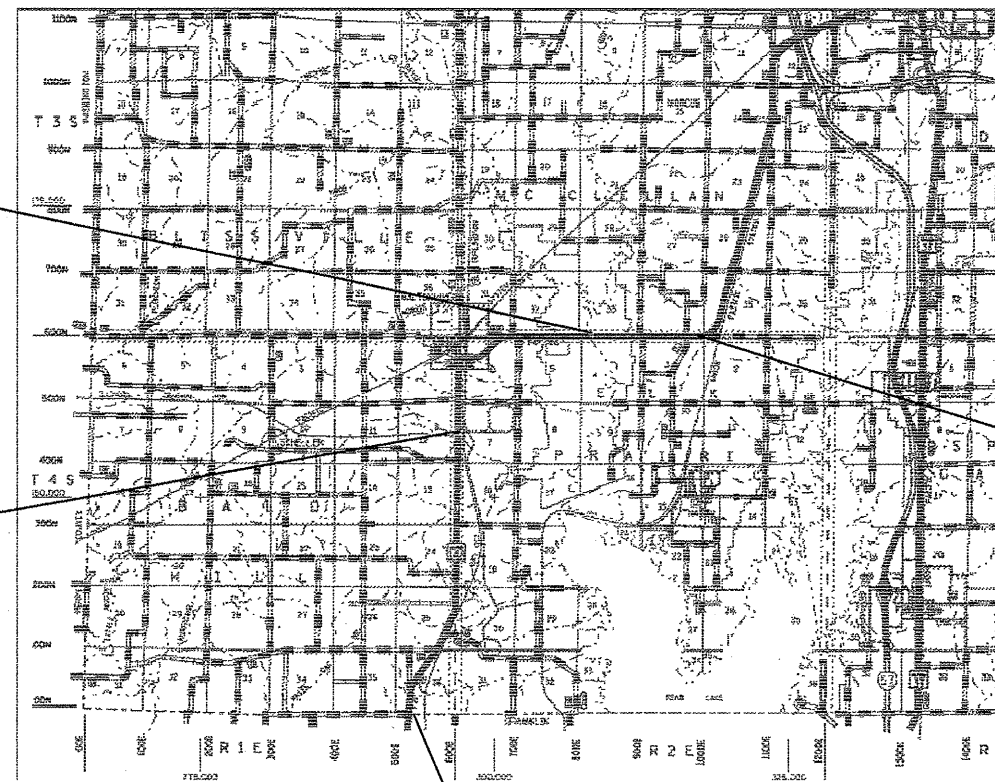
F.A.P. RTE.	SECTION	COUNTY	TOTAL SHEETS	SHEET NO.
726	(119,120)RS-3	JEFFERSON	16	1
FED. ROAD DIST. NO.		ILLINOIS	CONTRACT NO. 78044	

D-99-018-08



OMISSION
SN 041-0096 - STA. 107+53.4 TO STA. 114+00.4

OMISSION
SN 041-9900 - STA. 369+74 TO STA. 371+11



PROJECT ENDS
STA. 192+32
NASON RD.

PROJECT BEGINS
STA. 120+91
FRANKLIN/JEFFERSON CO. LINE

TOWNSHIPS: BALDHILL, ELK PRAIRIE, MCCLELLAN

J.U.L.I.E.
JOINT UTILITY LOCATION INFORMATION FOR EXCAVATION
1-800-892-0123
OR 811

PROJECT ENGINEER: CHARLES STEIN (618) 351-5210
DESIGNER: MELISSA COLE

CONTRACT NO. 78044

NET LENGTH OF PROJECT: 50,745.8 FT (9.61 MI)
GROSS LENGTH OF PROJECT: 51,529.8 FT (9.76 MI)

STATE OF ILLINOIS
DEPARTMENT OF TRANSPORTATION
DIVISION OF HIGHWAYS
SUBMITTED 3-14 20 08
Max C. Harris
DEPUTY DIRECTOR OF HIGHWAYS, REGION 5 ENGINEER
May 9, 20 08
Eric E. Harmon
ENGINEER OF DESIGN AND ENVIRONMENT
May 9, 20 08
Christine M. Reed
DIRECTOR OF HIGHWAYS, CHIEF ENGINEER

PRINTED BY THE AUTHORITY
OF THE STATE OF ILLINOIS