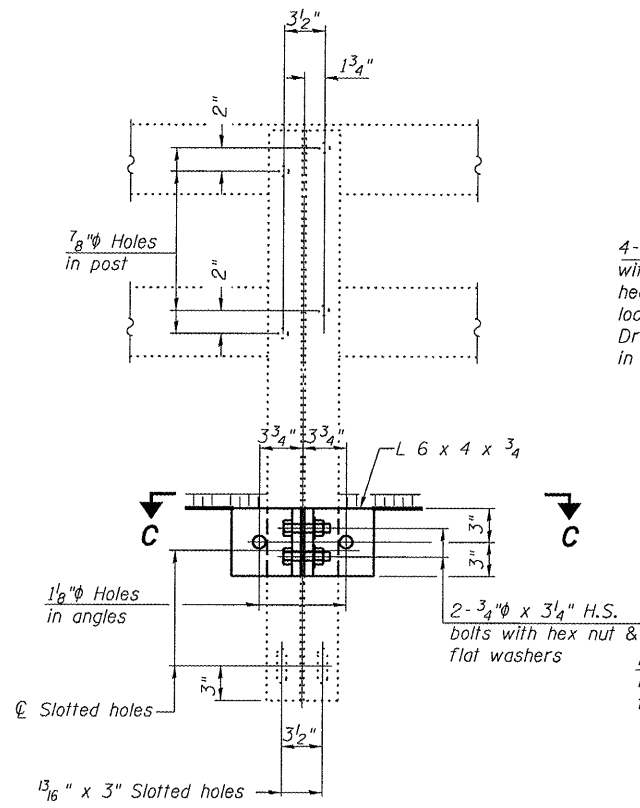


STATE OF ILLINOIS  
DEPARTMENT OF TRANSPORTATION

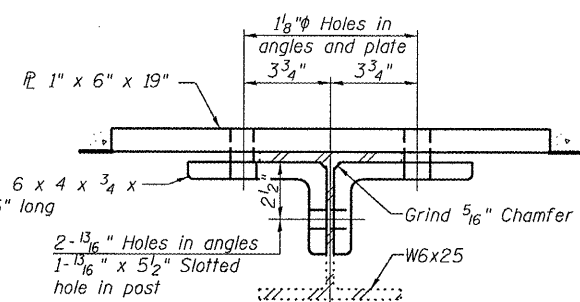
ROUTE NO.	SECTION	COUNTY	TOTAL SHEETS	SHEET NO.
FAP 885		Johnson	11	7
FED. ROAD DIST. NO. 7	ILLINOIS	FED. AID PROJECT-		

SHEET NO. 4  
4 SHEETS

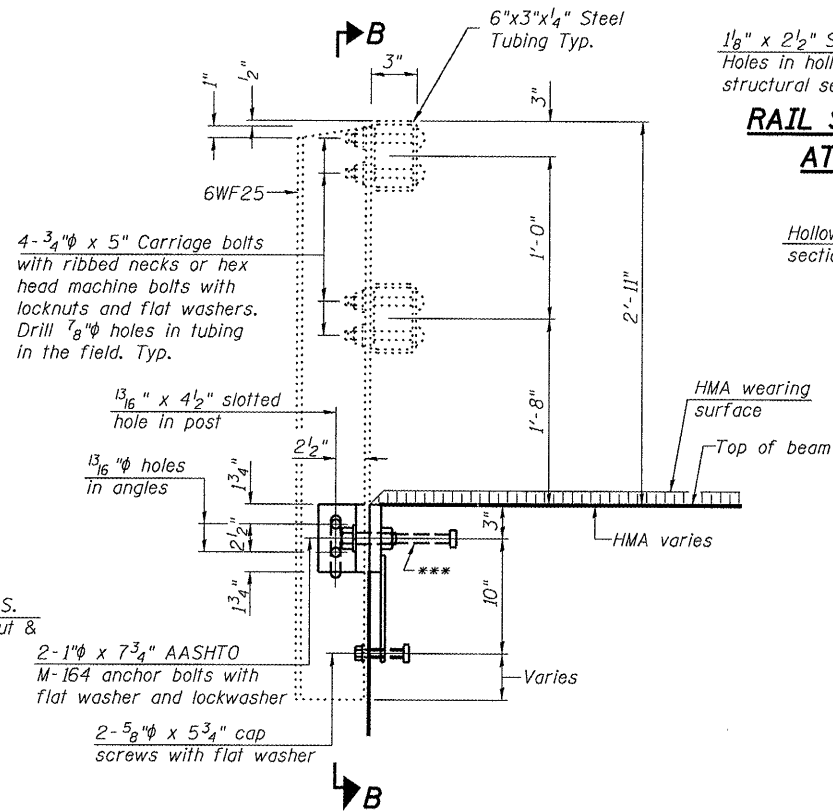
Contract Number: 78063



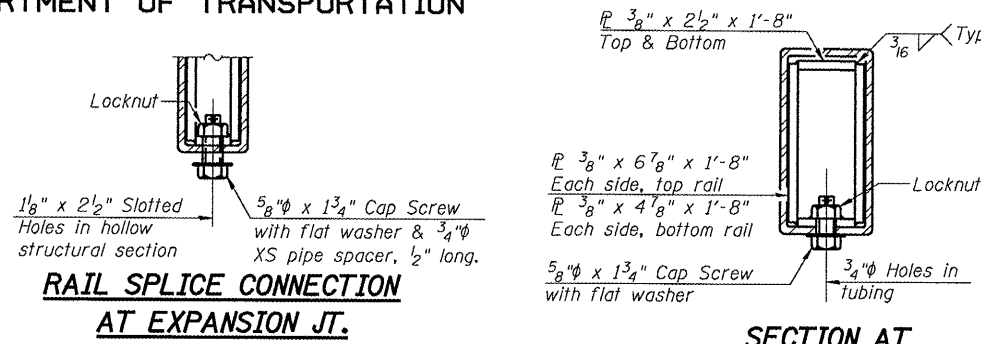
SECTION B-B



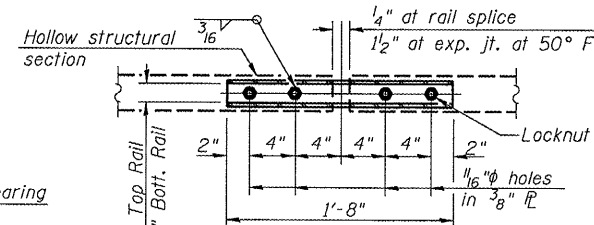
SECTION C-C



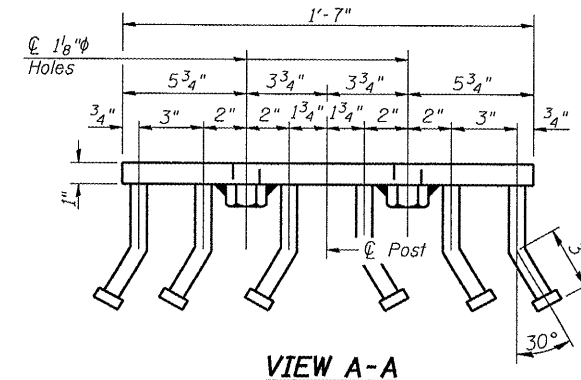
SECTION AT RAIL POST



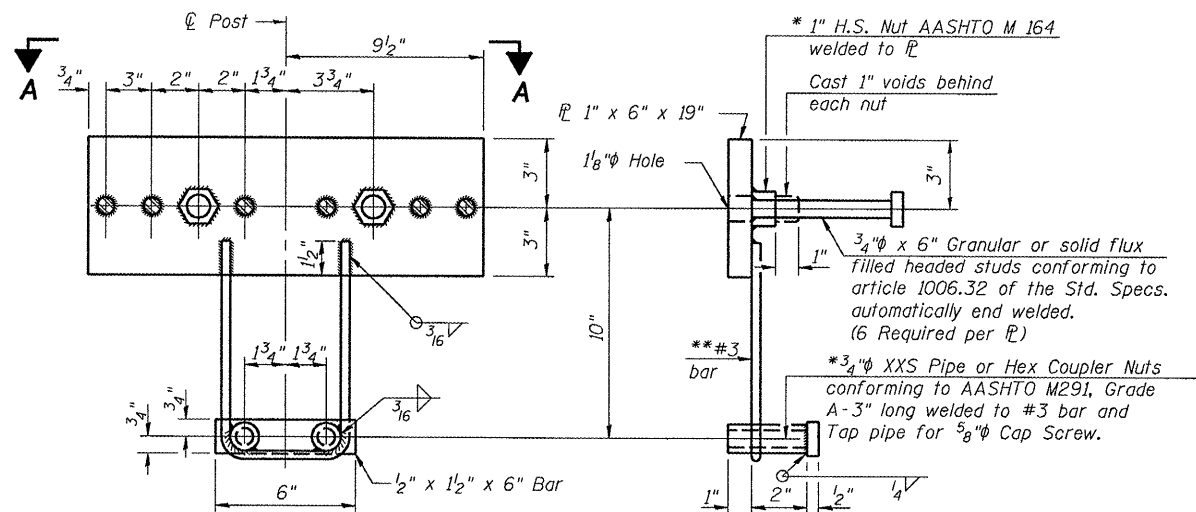
RAIL SPLICE CONNECTION  
AT EXPANSION JT.



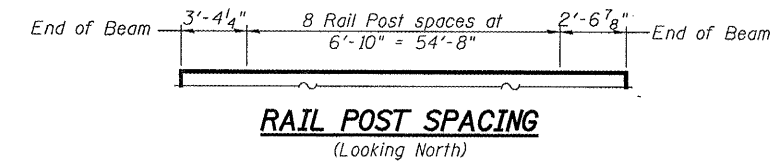
PLAN-BOTT. SPLICE TYPICAL



VIEW A-A



ANCHOR DEVICE



RAIL POST SPACING  
(Looking North)

Notes:  
All field drilled holes shall be coated with an approved zinc rich paint before erection.  
Cost included with Steel Railing, Type WT.  
All steel rail members shall be galvanized according to Article 509.05 of the Standard Specifications.  
\*\*\* The studs of the anchor devices shall be placed below the top reinforcement bars and the outermost longitudinal reinforcement bar shall be placed directly above the studs of the rail post anchor device.

BILL OF MATERIAL

Item	Unit	Quantity
Removing and Re-erecting Existing Railing	Foot	61

DESIGNED	A.J.B.
CHECKED	V.H.V.
DRAWN	Drew Christopher
CHECKED	A.J.B., V.H.V.

MAY 8, 2008  
EXAMINED *Carl Provey*  
ENGINEER OF STRUCTURAL SERVICES  
PASSED *Ralph E. Anderson*  
ENGINEER OF BRIDGES AND STRUCTURES

RAIL DETAILS  
F.A. RT. 51  
JOHNSON COUNTY  
SN 044-0020

\*Threaded areas shall be plugged or blocked off during casting of beam. Galvanized after fabrication.

\*\*Whenever the lower insert assemblies interfere with strand locations, the #3 bars shall be cut and adjusted in order to allow raising or lowering of the lower inserts. Maximum adjustment not to exceed 1/2 inch.