

STATE OF ILLINOIS  
DEPARTMENT OF TRANSPORTATION  
DIVISION OF HIGHWAYS

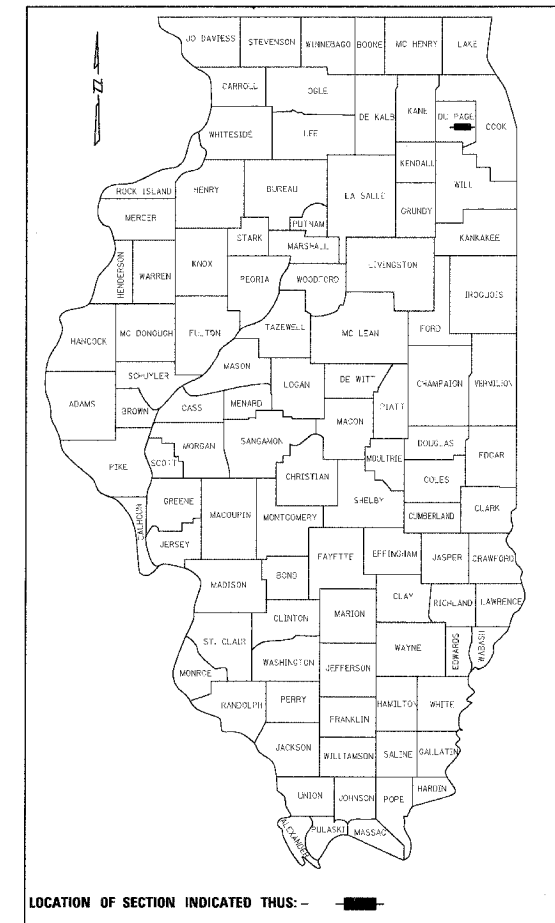
F.A.U. RTE.	SECTION	COUNTY	TOTAL SHEETS	SHEET NO.
369	00-00018-00-PV	DUPAGE	20	1
FED. ROAD DIST. NO. 1		ILLINOIS	FED. AID PROJECT	

CONTRACT NO. 83897

# PLANS FOR PROPOSED FEDERAL AID HIGHWAY

(FAP 369) 75th STREET  
IL. RTE 83 (KINGERY HIGHWAY FAU 334)  
TO MADISON STREET (FAU 2674)  
ROADWAY CONSTRUCTION  
L.A. SECTION No. 00-00018-00-PV  
PROJECT No. F-0369 (002)  
C-91-059-06

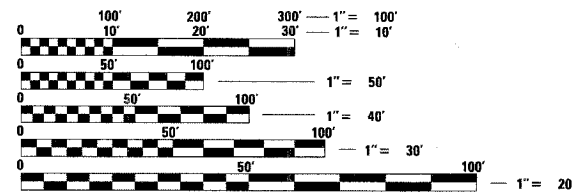
VILLAGE OF WILLOWBROOK  
DuPAGE COUNTY



LOCATION OF SECTION INDICATED THUS: - [black rectangle] -

DESCRIPTION	SHEET NO.
COVER	1
SUMMARY OF QUANTITIES, GENERAL NOTES AND IDOT STANDARDS	2
EARTHWORK SCHEDULE	3
TYPICAL SECTION	4
ALIGNMENT, TIES AND BENCHMARK SHEET	5
PLAN & PROFILE SHEETS	6-7
PAVEMENT MARKING PLAN	8
LANDSCAPING & EROSION CONTROL PLAN	9
ROADWAY LIGHTING GENERAL NOTES AND SUMMARY OF QUANTITIES	10
ROADWAY LIGHTING PLAN	11
ROADWAY LIGHTING DETAILS	12-13
CONSTRUCTION DETAILS	14
DISTRICT 1 TYPICAL PAVEMENT MARKINGS	15
TRAFFIC CONTROL AND PROTECTION FOR SIDE ROADS, INTERSECTIONS AND DRIVEWAYS	16
CROSS SECTIONS	17-20

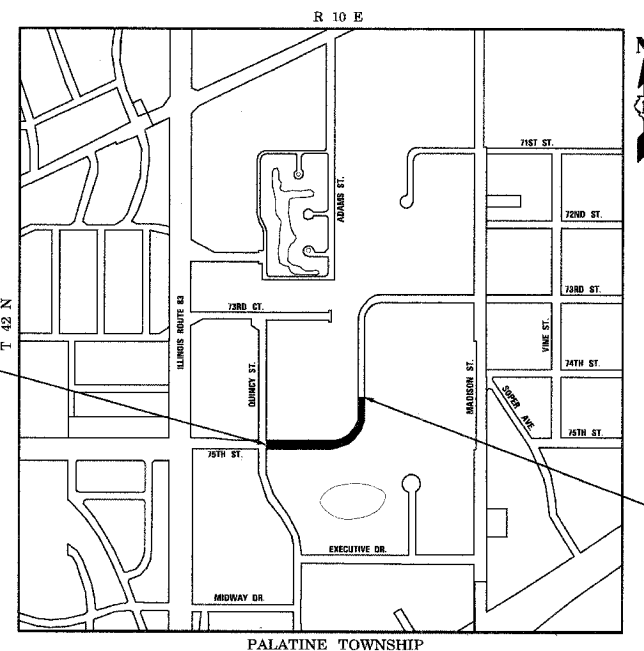
SCALES  
 PLAN 1:50  
 PROFILE HORIZ. 1:50  
 PROFILE VERT. 1:5  
 CROSS SECTIONS 1:5 VERT.  
 1:10 HORIZ.



FULL SIZE PLANS HAVE BEEN PREPARED USING STANDARD ENGINEERING SCALES. REDUCED SIZED PLANS WILL NOT CONFORM TO STANDARD SCALES. IN MAKING MEASUREMENTS ON REDUCED PLANS, THE ABOVE SCALES MAY BE USED.

J.U.L.I.E.  
JOINT UTILITY LOCATION INFORMATION FOR EXCAVATION  
1-800-892-0123

CONTRACT NO. 83897



LOCATION MAP  
N.T.S.

TRAFFIC DATA  
 ADT (YEAR) = 6560 (2006)  
 ADT (YEAR) = 9661 (2030)  
 SPEED LIMIT = 30 MPH  
 DESIGN DESIGNATION = URBAN COLLECTOR

BEGIN IMPROVEMENTS  
STA. 20+49.21

END IMPROVEMENTS  
STA. 32+60

GROSS LENGTH OF PROJECT = 1250 FEET (0.24 MI)  
 NET LENGTH OF PROJECT = 1250 FEET (0.24 MI)



SEAL

STATE OF ILLINOIS  
DEPARTMENT OF TRANSPORTATION  
DIVISION OF HIGHWAYS

Approved: Ts/H. Hld  
 Director of Municipal Services  
 Local Agency, Position

Passed: April 8, 2008  
Ch. H. - Christopher Burke  
 District #1 Engineer of Local Roads & Streets

Releasing for Bid  
 Based on Limited  
 Review APRIL 9, 2008  
Dianne M. O'Keefe  
 Deputy Director of Highways, Region #1 Engineer

FIELD ENGINEER: MARILYN SOLOMON (847)-705-4407

**CB** CHRISTOPHER B. BURKE ENGINEERING LTD.  
 9575 West Higgins Road, Suite 600  
 Rosemont, Illinois 60018 (847) 823-0500