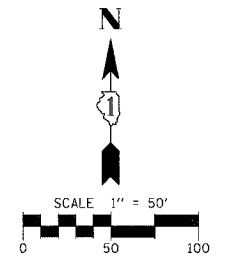
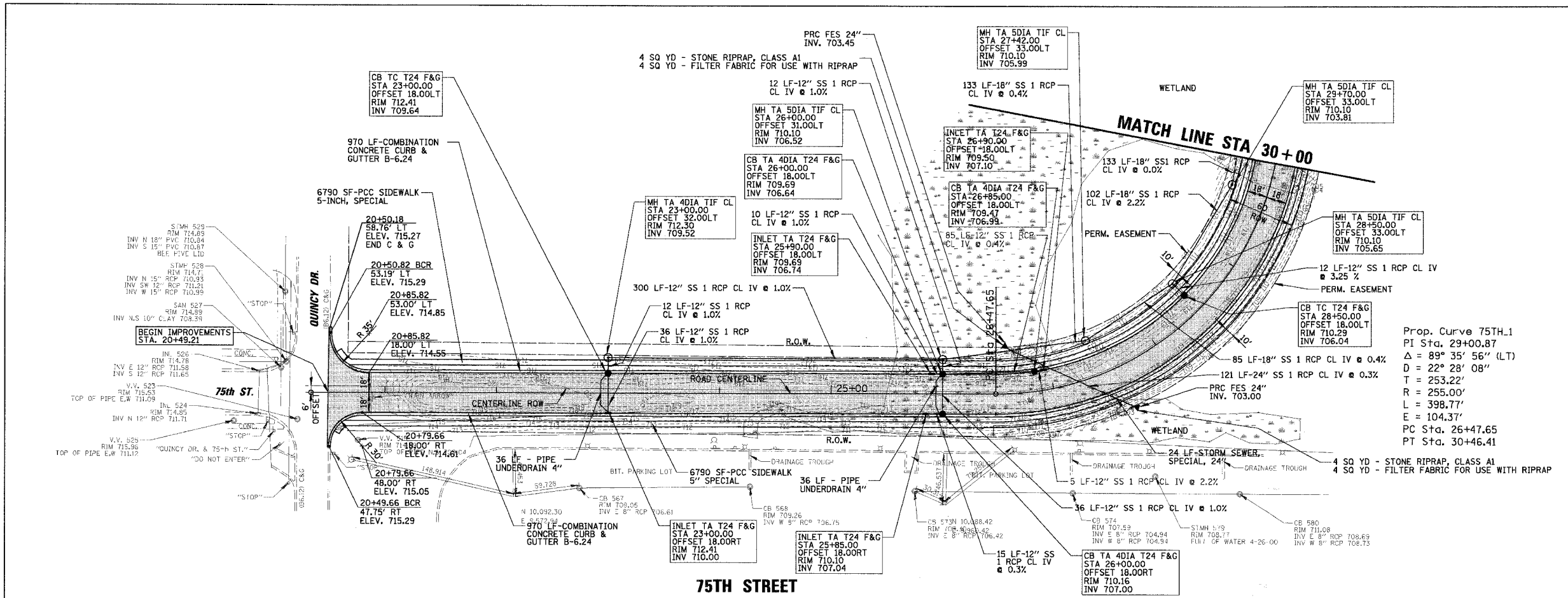


F.A.U. RTE.	SECTION	COUNTY	TOTAL SHEETS	SHEET NO.
369	00-00018-00-PV	COOK	20	6
STA. 20+49.21 TO STA. 30+00		FED. ROAD DIST. NO. 1 ILLINOIS FED. AID PROJECT		

CONTRACT NO. 83897

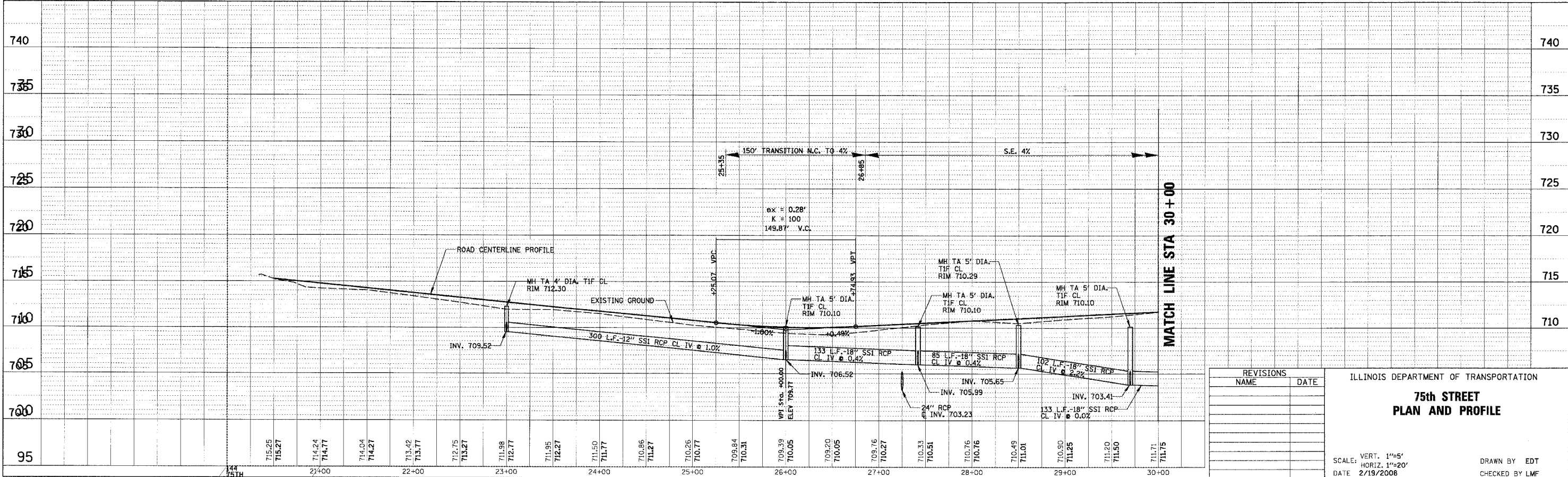


DATE	NO.	BY	REVISION



Prop. Curve 75TH.1
 PI Sta. 29+00.87
 $\Delta = 89^\circ 35' 56''$ (LT)
 $D = 22^\circ 28' 08''$
 $T = 253.22'$
 $R = 255.00'$
 $L = 398.77'$
 $E = 104.37'$
 PC Sta. 26+47.65
 PT Sta. 30+46.41

DATE	NO.	BY	REVISION



REVISIONS	NAME	DATE

ILLINOIS DEPARTMENT OF TRANSPORTATION
75th STREET
PLAN AND PROFILE
 SCALE: VERT. 1"=5'
 HORIZ. 1"=20'
 DATE 2/19/2008
 DRAWN BY EDT
 CHECKED BY LMF