

STATE OF ILLINOIS
DEPARTMENT OF TRANSPORTATION
DIVISION OF HIGHWAYS

F.A.U. RTE.	SECTION	COUNTY	TOTAL SHEETS	SHEET NO.
369	00-00018-00-PV	DUPAGE	20	1
FED. ROAD DIST. NO. 1		ILLINOIS	FED. AID PROJECT	

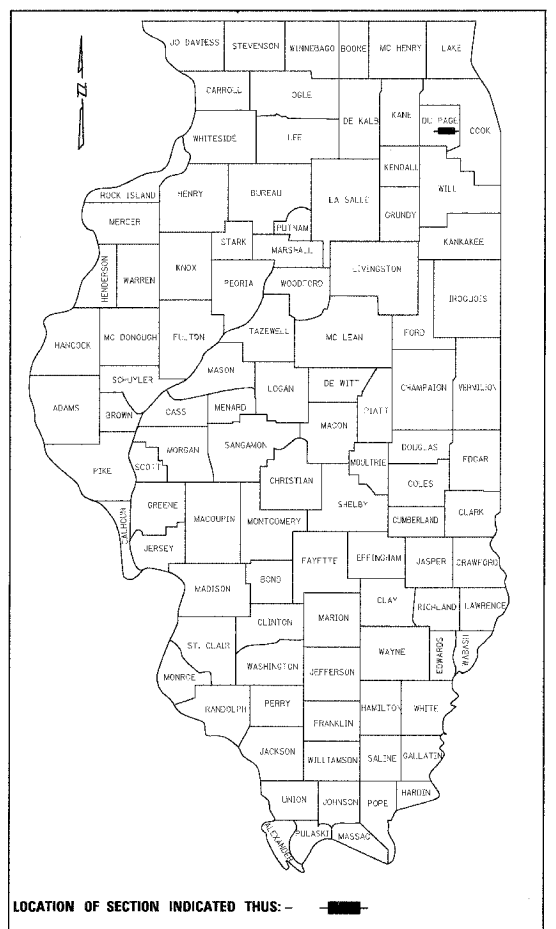
CONTRACT NO. 83897

PLANS FOR PROPOSED FEDERAL AID HIGHWAY

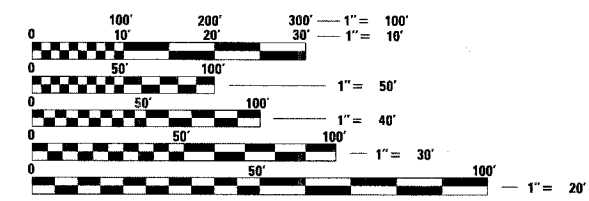
(FAP 369) 75th STREET
IL. RTE 83 (KINGERY HIGHWAY FAU 334)
TO MADISON STREET (FAU 2674)
ROADWAY CONSTRUCTION
L.A. SECTION No. 00-00018-00-PV
PROJECT No. F-0369 (002)
C-91-059-06

VILLAGE OF WILLOWBROOK
DuPAGE COUNTY

DESCRIPTION	SHEET NO.
COVER	1
SUMMARY OF QUANTITIES, GENERAL NOTES AND IDOT STANDARDS	2
EARTHWORK SCHEDULE	3
TYPICAL SECTION	4
ALIGNMENT, TIES AND BENCHMARK SHEET	5
PLAN & PROFILE SHEETS	6-7
PAVEMENT MARKING PLAN	8
LANDSCAPING & EROSION CONTROL PLAN	9
ROADWAY LIGHTING GENERAL NOTES AND SUMMARY OF QUANTITIES	10
ROADWAY LIGHTING PLAN	11
ROADWAY LIGHTING DETAILS	12-13
CONSTRUCTION DETAILS	14
DISTRICT 1 TYPICAL PAVEMENT MARKINGS	15
TRAFFIC CONTROL AND PROTECTION FOR SIDE ROADS, INTERSECTIONS AND DRIVEWAYS	16
CROSS SECTIONS	17-20



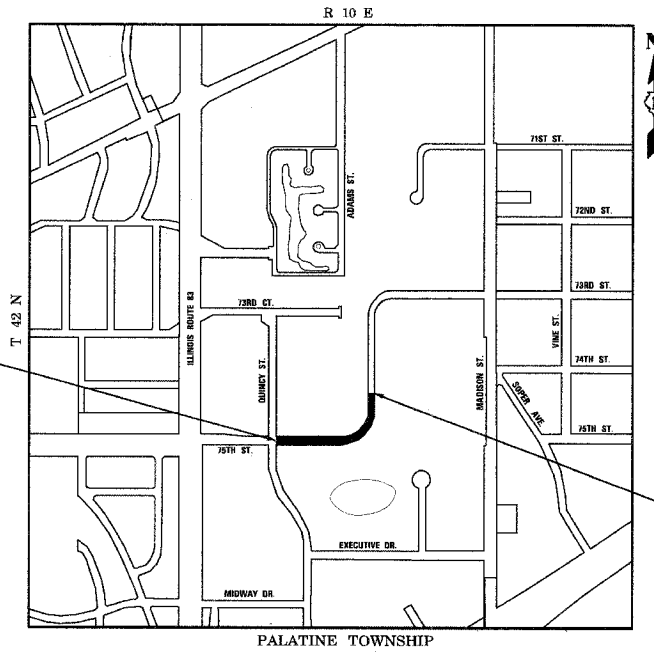
SCALES
 PLAN 1:50
 PROFILE HORIZ. 1:50
 PROFILE VERT. 1:5
 CROSS SECTIONS 1:5 VERT
 1:10 HORIZ



FULL SIZE PLANS HAVE BEEN PREPARED USING STANDARD ENGINEERING SCALES. REDUCED SIZED PLANS WILL NOT CONFORM TO STANDARD SCALES. IN MAKING MEASUREMENTS ON REDUCED PLANS, THE ABOVE SCALES MAY BE USED.

J.U.L.I.E.
JOINT UTILITY LOCATION INFORMATION FOR EXCAVATION
1-800-892-0123

CONTRACT NO. 83897



LOCATION MAP
N.T.S.

TRAFFIC DATA
 ADT (YEAR) = 6560 (2006)
 ADT (YEAR) = 9661 (2030)
 SPEED LIMIT = 30 MPH
 DESIGN DESIGNATION = URBAN COLLECTOR

BEGIN IMPROVEMENTS
STA. 20+49.21

END IMPROVEMENTS
STA. 32+60

GROSS LENGTH OF PROJECT = 1250 FEET (0.24 MI)
NET LENGTH OF PROJECT = 1250 FEET (0.24 MI)



SEAL

STATE OF ILLINOIS
DEPARTMENT OF TRANSPORTATION
DIVISION OF HIGHWAYS

Approved: Ts/H. Hld
Director of Municipal Services
Local Agency, Position

Passed: April 8, 2008
Ch. H. - Christopher Burke
District #1 Engineer of Local Roads & Streets

Releasing for Bid
Based on Limited
Review APRIL 9, 2008

Dianne M. O'Keefe or
Deputy Director of Highways, Region #1 Engineer

FIELD ENGINEER: MARILYN SOLOMON (847)-705-4407

CB CHRISTOPHER B. BURKE ENGINEERING LTD.
9575 West Higgins Road, Suite 600
Rosemont, Illinois 60018 (847) 823-0500

F.A.U. RTE.	SECTION	COUNTY	TOTAL SHEETS	SHEET NO.
369	00-00018-00-PV	COOK	20	2
STA.	TO STA.			
FED. ROAD DIST. NO. 1		ILLINOIS	FED. AID PROJECT	

CONTRACT NO. 83897

SUMMARY OF QUANTITIES

I000

GENERAL NOTES

ITEM NO.	ITEMS	UNIT	QUANTITY
20101000	TEMPORARY FENCE	FOOT	880
20200100	EARTH EXCAVATION	CU. YD.	3400
20201200	REMOVAL AND DISPOSAL OF UNSUITABLE MATERIAL	CU. YD.	600
20700420	POROUS GRANULAR EMBANKMENT, SUBGRADE	CU. YD.	600
20800150	TRENCH BACKFILL	CU. YD.	551
21101825	TOPSOIL FURNISH AND PLACE, 6"	SQ. YD.	3616
25000210	SEEDING, CLASS 2A	ACRE	0.7
25100630	EROSION CONTROL BLANKET	SQ. YD.	3388
25200110	SODDING, SALT TOLERANT	SQ. YD.	228
25200200	SUPPLEMENTAL WATERING	UNIT	100
28000250	TEMPORARY EROSION CONTROL SEEDING	POUND	70
28000400	PERIMETER EROSION BARRIER	FOOT	2640
28100101	STONE RIPRAP, CLASS A1	SQ. YD.	16
28200200	FILTER FABRIC	SQ. YD.	16
28000510	INLET FILTERS	EACH	10
40600100	BITUMINOUS MATERIALS (PRIME COAT)	GAL	1000
40701881	HOT-MIX ASPHALT PAVEMENT (FULL-DEPTH), 10"	SQ. YD.	4860
42400430	PORTLAND CEMENT CONCRETE SIDEWALK 5 INCH, SPECIAL	SQ. FT.	11950
42400800	DETECTABLE WARNINGS	SQ. FT.	50
54213669	PRECAST REINFORCED CONCRETE FLARED END SECTIONS 24"	EACH	4
55019500	STORM SEWERS, TYPE 1, REINFORCED CONCRET CULVERT, STORM DRAIN, AND SEWER PIPE, CLASS IV, 12"	FOOT	523
55019700	STORM SEWERS, TYPE 1, REINFORCED CONCRET CULVERT, STORM DRAIN, AND SEWER PIPE, CLASS IV, 18"	FOOT	453
55019900	STORM SEWERS, TYPE 1, REINFORCED CONCRET CULVERT, STORM DRAIN, AND SEWER PIPE, CLASS IV, 24"	FOOT	121
55021800	STORM SEWERS, TYPE 2, REINFORCED CONCRET CULVERT, STORM DRAIN, AND SEWER PIPE, CLASS III, 18"	FOOT	140
55022000	STORM SEWERS, TYPE 2, REINFORCED CONCRET CULVERT, STORM DRAIN, AND SEWER PIPE, CLASS III, 24"	FOOT	67
60107600	PIPE UNDERDRAINS 4"	FOOT	72
60201340	CATCH BASINS, TYPE A, 4'-DIAMETER, TYPE 24 FRAME AND GRATE	EACH	3
60208240	CATCH BASINS, TYPE C, TYPE 24 FRAME AND GRATE	EACH	2
60218400	MANHOLES, TYPE A, 4'-DIAMETER, TYPE 1 FRAME, CLOSED LID	EACH	1
60221100	MANHOLES, TYPE A, 5'-DIAMETER, TYPE 1 FRAME, CLOSED LID	EACH	5
60237470	INLETS, TYPE A, TYPE 24 FRAME AND GRATE	EACH	4
60605000	COMBINATION CONCRETE CURB AND GUTTER, TYPE B-6.24	FOOT	2450
61140900	STORM SEWERS, SPECIAL 24"	FOOT	39
67100100	MOBILIZATION	L SUM	1
70102620	TRAFFIC CONTROL AND PROTECTION, STANDARD 701501	L SUM	1
70102635	TRAFFIC CONTROL AND PROTECTION, STANDARD 701701	L SUM	1
70102640	TRAFFIC CONTROL AND PROTECTION, STANDARD 701801	L SUM	1
*78000100	THERMOPLASTIC PAVEMENT MARKING - LETTERS AND SYMBOLS	SQ. FT.	99
*78000200	THERMOPLASTIC PAVEMENT MARKING - LINE 4"	FOOT	2400
*78000400	THERMOPLASTIC PAVEMENT MARKING - LINE 6"	FOOT	248
*78000600	THERMOPLASTIC PAVEMENT MARKING - LINE 12"	FOOT	60
*78000850	THERMOPLASTIC PAVEMENT MARKING - LINE 24"	FOOT	30
Δ *81900200	TRENCH AND BACKFILL FOR ELECTRICAL WORK	FOOT	1350
Δ *82102250	LUMINAIRE, SODIUM VAPOR, HORIZONTAL MOUNT, 250W	EACH	8
Δ *83002400	LIGHT POLE, ALUMINUM, 40 FT. M.H., 10 FT. DAVIT ARM	EACH	8
Δ *83600200	LIGHT POLE FOUNDATION, 24" DIAMETER	FOOT	76
Δ *83800505	BREAKAWAY DEVICE, COUPLING WITH ALUMINUM SKIRT	EACH	32
X0322323	WEED CONTROL, TEASEL	GAL	1
X0322671	STABILIZED CONSTRUCTION ENTRANCE	SQ. YD.	320
Z0001050	AGGREGATE SUBGRADE, 12"	SQ. YD.	5830
Z0013798	CONSTRUCTION LAYOUT	L SUM	1
Δ *XX006834	ELECTRICAL CONNECTION TO EXISTING LIGHTING SYSTEM	EACH	1
Δ *XX006946	UNIT DUCT, WITH 4-1/2" NO.8 AND 1/2" NO.8 GROUND 600V (XLP-USE) 1 1/4" DIA POLYETHYLENE	FOOT	1500

Δ SPECIALTY ITEMS
Δ 4030-1E

UTILITIES

THE CONTRACTOR SHALL COOPERATE WITH THE VILLAGE IN ANY UNDERGROUND UTILITY CONSTRUCTION WHICH THE VILLAGE MAY WANT TO PLACE DURING THE CONTRACTOR'S OPERATIONS.

THE CONTRACTOR SHALL BE RESPONSIBLE FOR CONTACTING THE OWNERS OF ALL EXISTING FACILITIES SO THAT THE UTILITIES AND THEIR APPURTENANCES MAY BE LOCATED AND ADJUSTED OR MOVED, IF NECESSARY, PRIOR TO THE START OF CONSTRUCTION OPERATIONS. THE CONTRACTOR SHALL COOPERATE WITH ALL UTILITY OWNERS AS PROVIDED FOR IN THE STANDARD SPECIFICATIONS.

THE LOCATIONS OF EXISTING DRAINAGE STRUCTURES, STORM AND SANITARY SEWERS, WATER SERVICE LINES AND OTHER UTILITY LINES ARE APPROXIMATE, AND THE VILLAGE DOES NOT GUARANTEE THEIR ACCURACY. THEIR EXACT HORIZONTAL AND VERTICAL LOCATIONS ARE TO BE DETERMINED IN THE FIELD BY THE CONTRACTOR AT HIS OWN EXPENSE.

THE CONTRACTOR SHALL BE RESPONSIBLE FOR THE PROTECTION OF ALL UNDERGROUND OR SURFACE UTILITIES EVEN THOUGH THEY MAY NOT BE SHOWN ON THE PLANS. ANY UTILITY THAT IS DAMAGED DURING CONSTRUCTION SHALL BE REPAIRED OR REPLACED TO THE SATISFACTION OF THE ENGINEER OR THE VILLAGE. THIS WORK SHALL BE AT THE CONTRACTOR'S EXPENSE.

BEFORE STARTING ANY EXCAVATION, THE CONTRACTOR SHALL CALL "JULIE" AT 800-892-0123 FOR FIELD LOCATIONS OF BURIED ELECTRIC, TELEPHONE, GAS AND CABLE TELEVISION FACILITIES. (48 HOURS NOTIFICATION IS REQUIRED.)

STAKING

THE CONTRACTOR SHALL PROTECT AND CAREFULLY PRESERVE ALL SECTION OR SUBSECTION MONUMENTS OR PROPERTY OR REFERENCE MARKERS UNTIL THE VILLAGE, HIS AGENT OR AN AUTHORIZED SURVEYOR HAS WITNESSED OR OTHERWISE REFERENCED THEIR LOCATIONS.

WATER, STORM SEWER AND SANITARY SEWER

WHENEVER DURING CONSTRUCTION OPERATIONS ANY LOOSE MATERIAL IS DEPOSITED IN THE FLOW LINE OF DRAINAGE STRUCTURES SUCH THAT THE NATURAL FLOW OF WATER IS OBSTRUCTED, IT SHALL BE REMOVED AT THE CLOSE OF EACH WORKING DAY. AT THE CONCLUSION OF CONSTRUCTION OPERATIONS, ALL UTILITY STRUCTURES SHALL BE FREE FROM DIRT AND DEBRIS. THE WORK SPECIFIED ABOVE WILL NOT BE PAID FOR SEPARATELY BUT SHALL BE INCLUDED IN THE PAY ITEM TRAFFIC CONTROL AND PROTECTION, STD. 701501.

ANY EXISTING OR PROPOSED STORM SEWER DAMAGED BY THE CONTRACTOR DURING CONSTRUCTION SHALL BE REPLACED BY THE CONTRACTOR AT NO COST TO THE VILLAGE.

THE CONTRACTOR SHALL NOT OPEN OR SHUT ANY WATER VALVES OR FIRE HYDRANTS WITHOUT PRIOR AUTHORIZATION FROM THE VILLAGE WATER DEPARTMENT. UNAUTHORIZED USE SHALL SUBJECT THE OFFENDER TO ARREST AND PROSECUTION.

MISCELLANEOUS

DIMENSIONS: IT SHALL BE THE CONTRACTOR'S RESPONSIBILITY TO VERIFY ALL DIMENSIONS AND CONDITIONS EXISTING IN THE FIELD PRIOR TO ORDERING MATERIALS AND BEGINNING CONSTRUCTION.

ALL SAWCUTTING SHALL BE INCLUDED TO REMOVAL ITEMS AND SHALL BE PERFORMED PRIOR TO BEGINNING REMOVAL. ANY ITEMS OF WORK REMOVED PRIOR TO SAWCUTTING WILL NOT BE MEASURED FOR PAYMENT.

THE THICKNESSES OF BITUMINOUS MIXTURES SHOWN IN THE PLANS ARE NOMINAL. DEVIATIONS MAY OCCUR DUE TO IRREGULARITIES IN THE SURFACES OR BASIS ON WHICH THEY ARE TO BE PLACED. PLAN THICKNESSES SHOULD BE CONSIDERED THE MINIMUM THICKNESS PERMITTED.

ALL ELEVATIONS, OFFSETS AND DIMENSIONS SHOWN FOR LAYOUT ARE TO EDGE OF PAVEMENT AND CENTER OF STRUCTURE, UNLESS OTHERWISE NOTED.

ALL EASEMENTS ARE EXISTING PERMANENT EASEMENTS

TYPE "B" SIDEWALK RAMPS FOR THE HANDICAPPED SHALL BE INSTALLED AT ALL INTERSECTING STREETS AND DRIVEWAYS AS DIRECTED BY THE ENGINEER (SEE IDOT STD. 424001-05 INCLUDED IN THE SPECIFICATIONS).

DEPRESSED CURB RAMP OR DEPRESSED CURBS ACCESSIBLE TO THE HANDICAPPED SHALL BE PROVIDED AT ALL CROSSWALKS AND BICYCLE PATHS.

PAVEMENT GRADES: THE ELEVATIONS INDICATED ON THE PLANS ARE FINISHED GRADES OF PROPOSED PAVEMENT OR SURFACE COURSE, UNLESS OTHERWISE INDICATED.

RELOCATING EXISTING SIGNS: EXISTING SIGNS WHICH ARE IN CONFLICT WITH PROPOSED IMPROVEMENTS SHALL BE REMOVED AND REINSTALLED UPON COMPLETION OF CONFLICTING IMPROVEMENTS IN ACCORDANCE WITH THE ILLINOIS DEPARTMENT OF TRANSPORTATION "MANUAL OF UNIFORM TRAFFIC CONTROL DEVICES" AND THE "STANDARD SPECIFICATIONS FOR ROAD AND BRIDGE CONSTRUCTION". STOP SIGNS, SPEED LIMIT SIGNS, AND STREET NAME SIGNS SHALL BE UP AND VISIBLE AT ALL TIMES. THIS WORK SHALL BE INCLUDED TO THE PAY ITEM TRAFFIC CONTROL AND PROTECTION, STD. 701501.

PAY ITEMS IN THE SUMMARY OF QUANTITIES HAVE BEEN ESTIMATED. IF, IN THE ENGINEER'S OPINION, THE WORK IS NOT REQUIRED, THE ITEM WILL BE DEDUCTED FROM THE CONTRACT AND NO ADDITIONAL COMPENSATION WILL BE ALLOWED.

PROPOSED CONCRETE CURB AND GUTTER SHALL BE TRANSITIONED TO EXISTING CURB AND GUTTER OVER A LENGTH OF 5 FEET. THIS WORK SHALL BE PAID FOR AT THE CONTRACT UNIT PRICE PER FOOT FOR COMBINATION CONCRETE CURB AND GUTTER, TYPE B-6.24.

CONTRACTOR SHALL NOT PLACE SOD UNTIL THE TEMPERATURE IS 80° OR LESS AND THE FORECAST FOR THE NEXT 7 DAYS SHOWS TEMPERATURES OF 80° OR LESS. IF ALL OTHER PAY ITEMS ARE COMPLETED, THE CONTRACTOR WILL NOT BE CHARGED WORKING DAYS FOR DELAYS IN PARKWAY RESTORATION DUE TO TEMPERATURE.

IDOT STANDARDS

000001-05	STANDARD SYMBOLS, ABBREVIATIONS, AND PATTERNS
280001-04	TEMPORARY EROSION CONTROL SYSTEMS
424001-05	CURB RAMPS FOR SIDEWALKS
542301-01	PRECAST REINFORCED CONCRETE FLARED END SECTION
602001	CATCH BASIN TYPE A
602011	CATCH BASIN TYPE C
602301-01	INLET, TYPE A
602401-01	MANHOLE TYPE A
606001-03	CONCRETE CURB TYPE B AND COMBINATION CONCRETE CURB AND GUTTER
701501-04	URBAN LANE CLOSURE, 2L, 2W UNDIVIDED
701606-05	URBAN LANE CLOSURE, MULTILANE 2W WITH MOUNTABLE MEDIAN
701701-05	URBAN LANE CLOSURE, MULTILANE INTERSECTION
701801-03	LANE CLOSURE MULTILANE 1W OR 2W CROSSWALK OR SIDEWALK CLOSURE FOR SPEEDS 45 MPH
701901	TRAFFIC CONTROL DEVICES
720001	SIGN PANEL MOUNTING DETAILS
720006-01	SIGN PANEL ERECTION DETAILS
720011	METAL POSTS FOR SIGNS, MARKERS AND DELINEATORS
780001-01	TYPICAL PAVEMENT MARKINGS
B.L.R. 17-3	TYPICAL APPLICATION OF TRAFFIC CONTROL DEVICES (CASE LR-1) 2-LANE, 2-WAY, RURAL, OVER 1 DAY
B.L.R. 21-7	TYPICAL APPLICATION OF TRAFFIC CONTROL DEVICES FOR CONSTRUCTION ON RURAL LOCAL HIGHWAYS

REVISIONS	
NAME	DATE

ILLINOIS DEPARTMENT OF TRANSPORTATION
**75th STREET
SUMMARY OF QUANTITIES,
GENERAL NOTES
AND IDOT STANDARDS**

SCALE: VERT. N.T.S.
HORIZ. N.T.S.
DATE 3/31/2008
DRAWN BY EDT
CHECKED BY LMF

F.A.U. RTE.	SECTION	COUNTY	TOTAL SHEETS	SHEET NO.
369	00-00018-00-PV	COOK	20	3
STA.		TO STA.		
FED. ROAD DIST. NO. 1		ILLINOIS	FED. AID PROJECT	

CONTRACT NO. 83897

EARTHWORK SCHEDULE

STATION	EARTH EXCAVATION **	EARTH EXCAVATION ADJUSTED FOR SHRINKAGE (15%)	EMBANKMENT	EARTHWORK BALANCE WASTE (+) OR SHORTAGE (-) *
	CY	CY	CY	CY
20+85.82	36.9	31.4	1.9	29.5
21+00	141.9	120.6	10.0	110.6
21+50	153.1	130.2	8.1	122.0
22+00	150.0	127.5	8.4	119.1
22+50	136.5	116.0	6.4	109.6
23+00	144.7	123.0	1.8	121.3
23+50	170.4	144.8	0.3	144.5
24+00	168.7	143.4	0.1	143.3
24+50	161.9	137.6	2.1	135.4
25+00	156.7	133.2	3.0	130.2
25+50	133.4	113.4	12.3	101.1
26+00	105.8	90.0	43.2	46.7
26+50	99.0	84.1	46.9	37.2
27+00	121.2	103.0	44.3	58.8
27+50	152.7	129.8	31.8	98.0
28+00	161.5	137.3	13.1	124.1
28+50	145.9	124.0	31.1	92.9
29+00	151.4	128.7	22.7	106.0
29+50	153.6	130.6	17.8	112.8
30+00	134.9	114.7	34.4	80.3
30+50	81.4	69.2	15.6	53.6
30+80.07	58.4	49.7	4.5	45.1
31+00	144.2	122.5	8.9	113.7
31+50	138.9	118.1	5.6	112.4
32+00	196.9	167.3	0.9	166.4
32+50	0.0	0.0	0.0	0.0
TOTAL=	3400.0	2889.9	375.3	2514.6

REVISIONS	
NAME	DATE

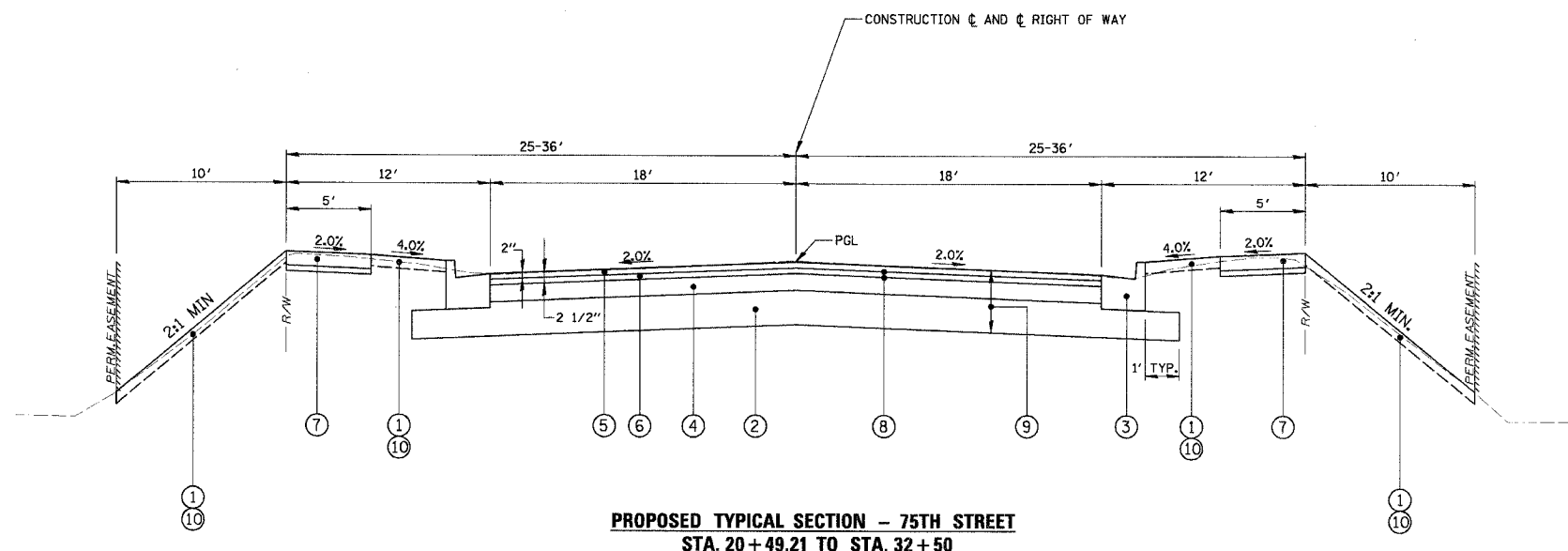
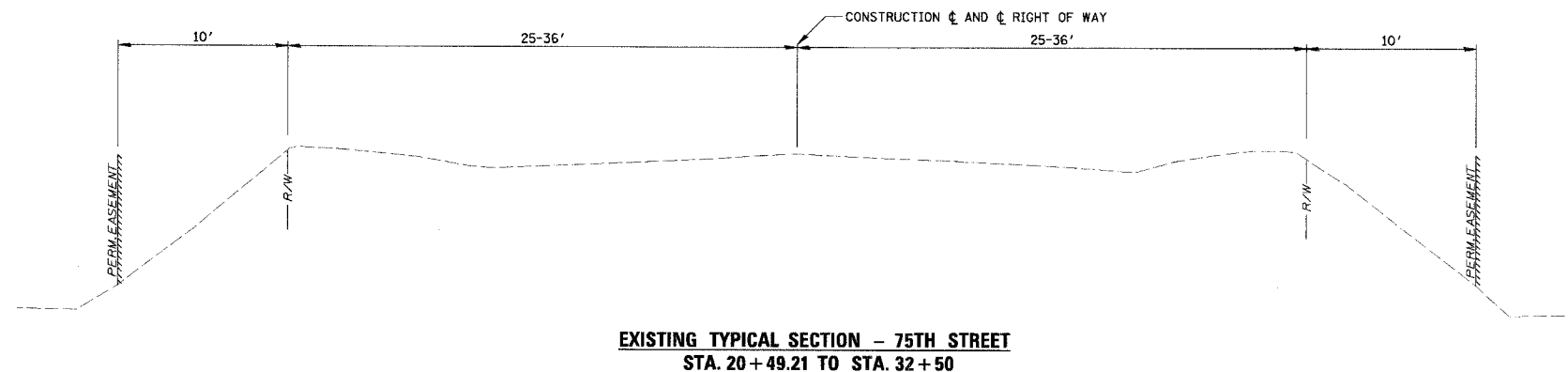
ILLINOIS DEPARTMENT OF TRANSPORTATION
75th STREET
EARTHWORK SCHEDULE

SCALE: VERT. N.T.S.
HORIZ.
DATE 3/31/2008

DRAWN BY EDT
CHECKED BY LMF

F.A.U. RTE.	SECTION	COUNTY	TOTAL SHEETS	SHEET NO.
369	00-00018-00-PV	COOK	20	4
STA.		TO STA.		
FED. ROAD DIST. NO. 1		ILLINOIS FED. AID PROJECT		

CONTRACT NO. 83897



LEGEND

- ① TOPSOIL FURNISH AND PLACE, 6"
- ② AGGREGATE SUBGRADE, 12"
- ③ COMBINATION CONCRETE CURB AND GUTTER, TYPE B-6.24
- ④ HOT-MIX ASPHALT BASE COURSE, 5 1/2"
- ⑤ HOT-MIX ASPHALT SURFACE COURSE, MIX "C", N50, 2"
- ⑥ HOT-MIX ASPHALT BINDER COURSE, IL-19, N50, 2 1/2"
- ⑦ PORTLAND CEMENT CONCRETE SIDEWALK 5"
- ⑧ BITUMINOUS MATERIALS (PRIME COAT)
- ⑨ EARTH EXCAVATION
- ⑩ SODDING, SALT TOLERANT

HOT-MIX ASPHALT PAVEMENT (FULL DEPTH), 10" MIXTURE REQUIREMENTS

ITEM	AC-TYPE	VOIDS
HOT-MIX ASPHALT SURFACE COURSE, MIX "D", N50, 2" (IL-9.5 mm)	PG 64-22	4% @ 50 GYR
HOT-MIX ASPHALT BINDER COURSE, IL-19-0, N50, 2 1/2"	*PG 64-22	4% @ 50 GYR
HOT-MIX ASPHALT BASE COURSE, (HMA BINDER IL-19 mm) 5 1/2"	*PG 64-22	4% @ 50 GYR

1. THE UNIT WEIGHT USED TO CALCULATE ALL HOT-MIX ASPHALT SURFACE MIXTURE QUANTITIES IS 112 LBS/SY/IN.
2. *WHEN RAP EXCEEDS 20%, THE NEW ASPHALT BINDER IN THE MIX SHALL BE PG58-22.

DESIGN DESIGNATION - URBAN COLLECTOR

STRUCTURAL DESIGN TRAFFIC: YEAR 2030
 PV = 9178 SU = 290 MU = 193
 ROAD/STREET CLASSIFICATION: CLASS II

PERCENT OF STRUCTURAL DESIGN TRAFFIC IN DESIGN LANE:
 P = 95% S = 3% M = 2%

TRAFFIC FACTOR: MINIMUM TF = 0.50 ACTUAL TF = 0.85
 SUBGRADE SUPPORT RATING:
 SSR = FAIR (ENTIRE PROJECT)

NOTE: TEMPERATURE AT THE LOCATION 77° FOR AC MIX.
 AC TYPE 10 BASED ON ADT.

REVISIONS	
NAME	DATE

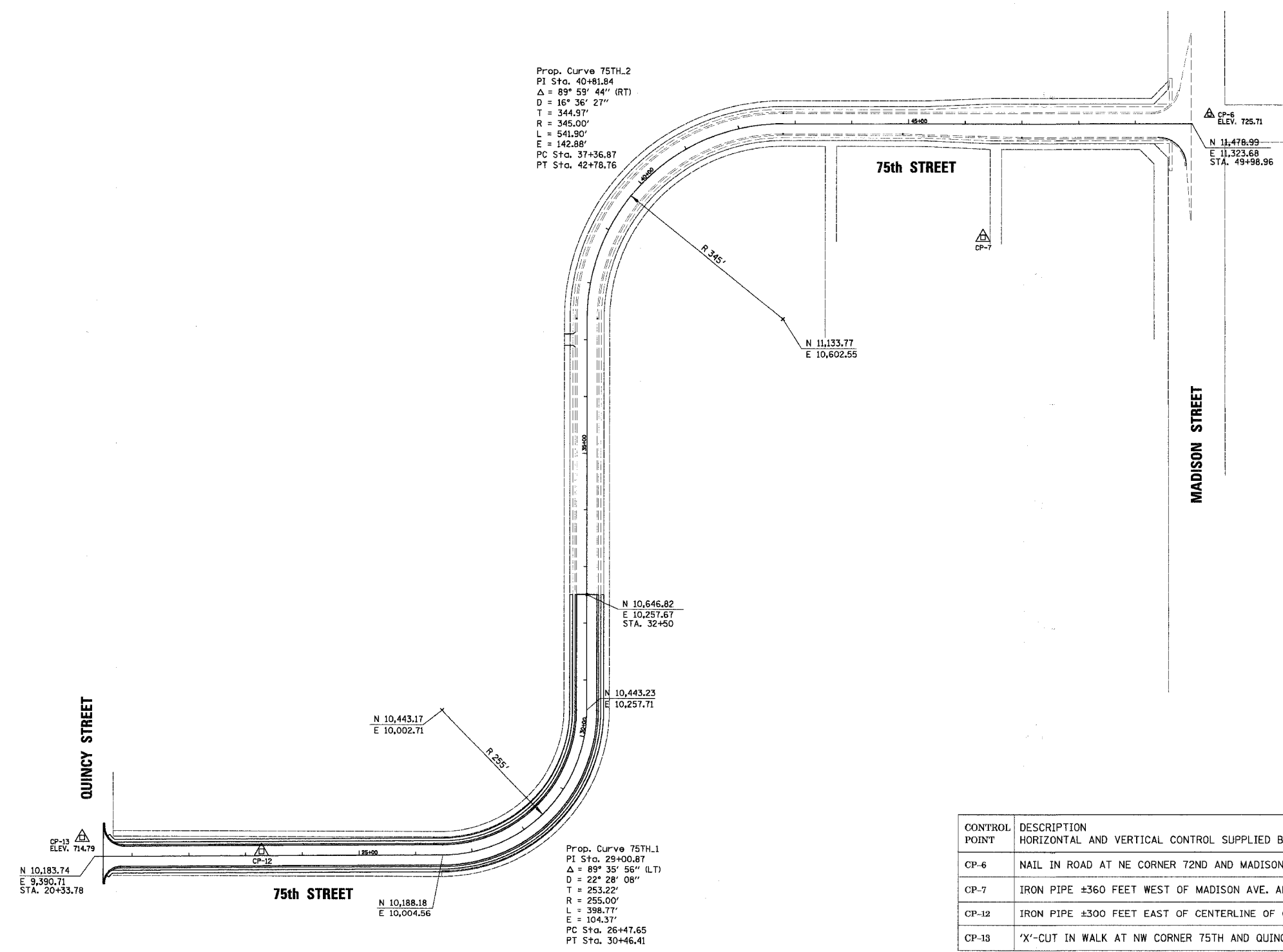
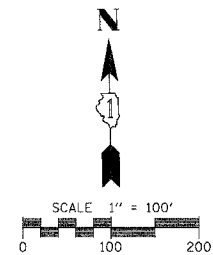
ILLINOIS DEPARTMENT OF TRANSPORTATION
**75th STREET
 TYPICAL SECTION**

SCALE: VERT. N.T.S.
 HORIZ.
 DATE 3/13/2008

DRAWN BY EDT
 CHECKED BY LMF

F.A.U. R.T.E.	SECTION	COUNTY	TOTAL SHEETS	SHEET NO.
369	00-00018-00-PV	COOK	20	5
STA.		TO STA.		
FED. ROAD DIST. NO. 1		ILLINOIS FED. AID PROJECT		

CONTRACT NO. 83897



ELEVATION BENCH MARKS		
DATUM: N.G.V.D. 1929		
NO.	DESCRIPTION	ELEV.
CP-6	NAIL IN ROAD AT NE COR 72nd & MADISON ST	725.71
TP	NW BOLT F.H. @ S. LINE *7410 QUINCY + 250' N. OF 75TH & QUINCY	715.94
C13	CP13 "X"-CUT IN WALK @ NW COR 75TH & QUINCY	714.79

CONTROL POINT	DESCRIPTION	NORTHING	EASTING
HORIZONTAL AND VERTICAL CONTROL SUPPLIED BY COWHEY GUDMUNDSON LEDER, LTD.			
CP-6	NAIL IN ROAD AT NE CORNER 72ND AND MADISON STREET	11,495.84	11,354.10
CP-7	IRON PIPE ±360 FEET WEST OF MADISON AVE. AND ±225 FEET SOUTH OF 73RD STREET	11,278.48	10,956.22
CP-12	IRON PIPE ±300 FEET EAST OF CENTERLINE OF QUINCY AND 75TH STREET	10,193.55	9,684.96
CP-13	'X'-CUT IN WALK AT NW CORNER 75TH AND QUINCY	10,217.34	9,368.88

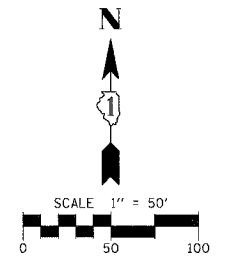
REVISIONS		ILLINOIS DEPARTMENT OF TRANSPORTATION
NAME	DATE	
		75th STREET ALIGNMENT, TIES AND BENCHMARKS

SCALE: VERT. HORIZ. 1" = 100'
DATE: 2/19/2008

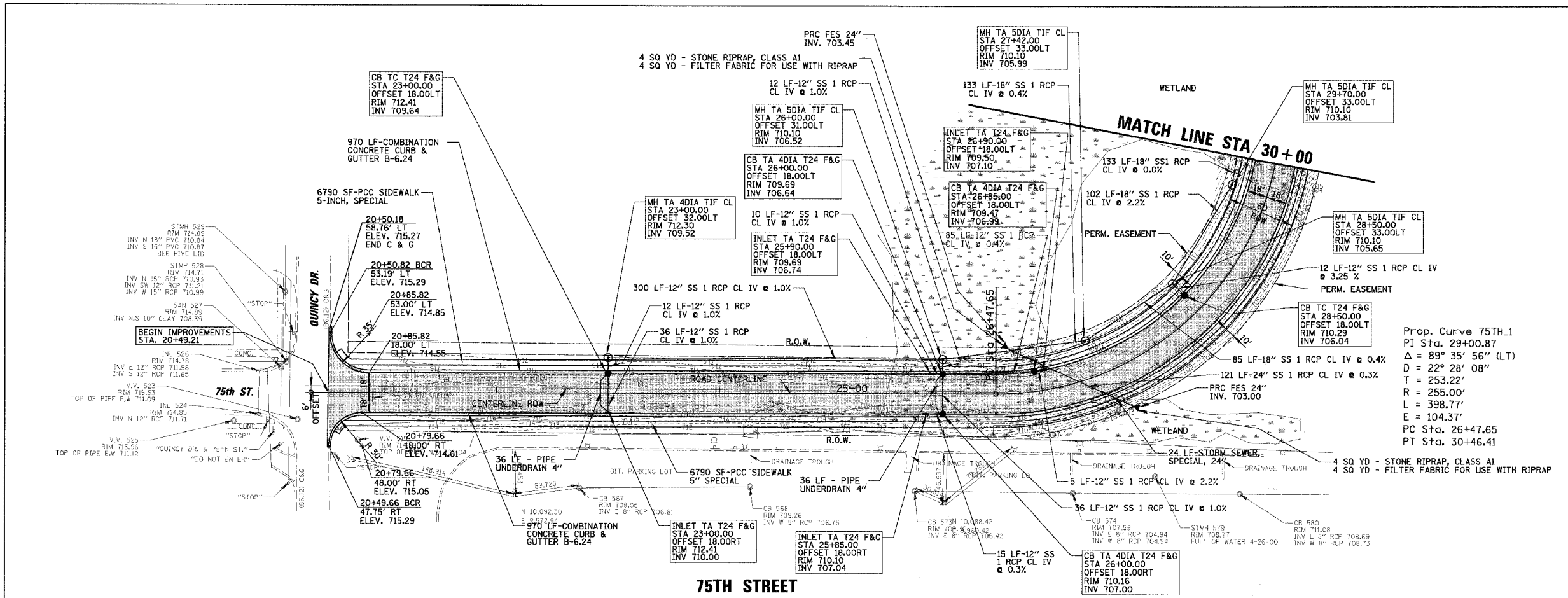
DRAWN BY: EDT
CHECKED BY: LMF

F.A.U. RTE.	SECTION	COUNTY	TOTAL SHEETS	SHEET NO.
369	00-00018-00-PV	COOK	20	6
STA. 20+49.21 TO STA. 30+00		FED. ROAD DIST. NO. 1 ILLINOIS FED. AID PROJECT		

CONTRACT NO. 83897

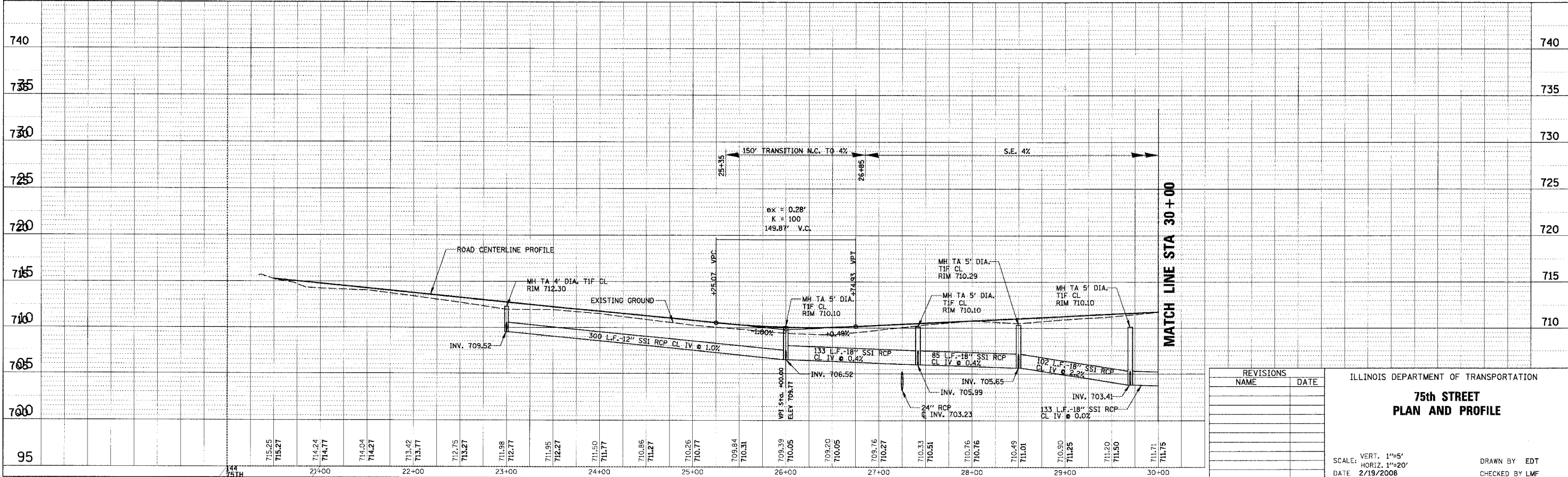


DATE	NO.	BY	REVISION



Prop. Curve 75TH.1
 PI Sta. 29+00.87
 $\Delta = 89^\circ 35' 56''$ (LT)
 $D = 22^\circ 28' 08''$
 $T = 253.22'$
 $R = 255.00'$
 $L = 398.77'$
 $E = 104.37'$
 PC Sta. 26+47.65
 PT Sta. 30+46.41

DATE	NO.	BY	REVISION



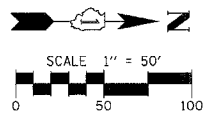
REVISIONS	NAME	DATE

ILLINOIS DEPARTMENT OF TRANSPORTATION
75th STREET
PLAN AND PROFILE

SCALE: VERT. 1"=5'
 HORIZ. 1"=20'
 DATE 2/19/2008
 DRAWN BY EDT
 CHECKED BY LMF

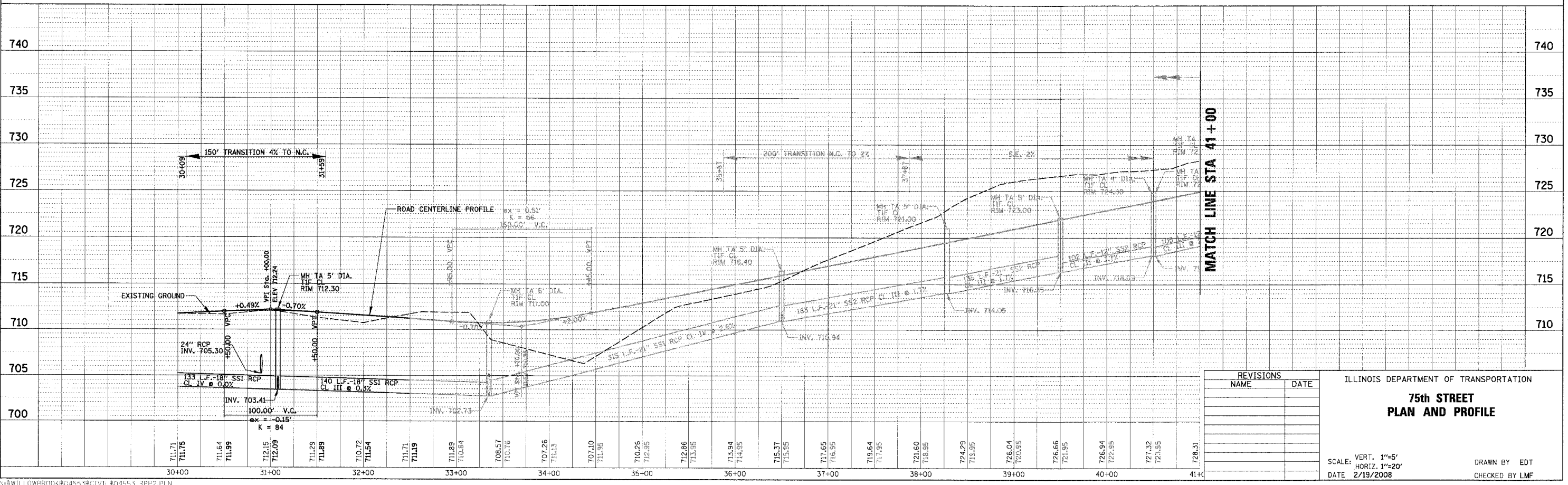
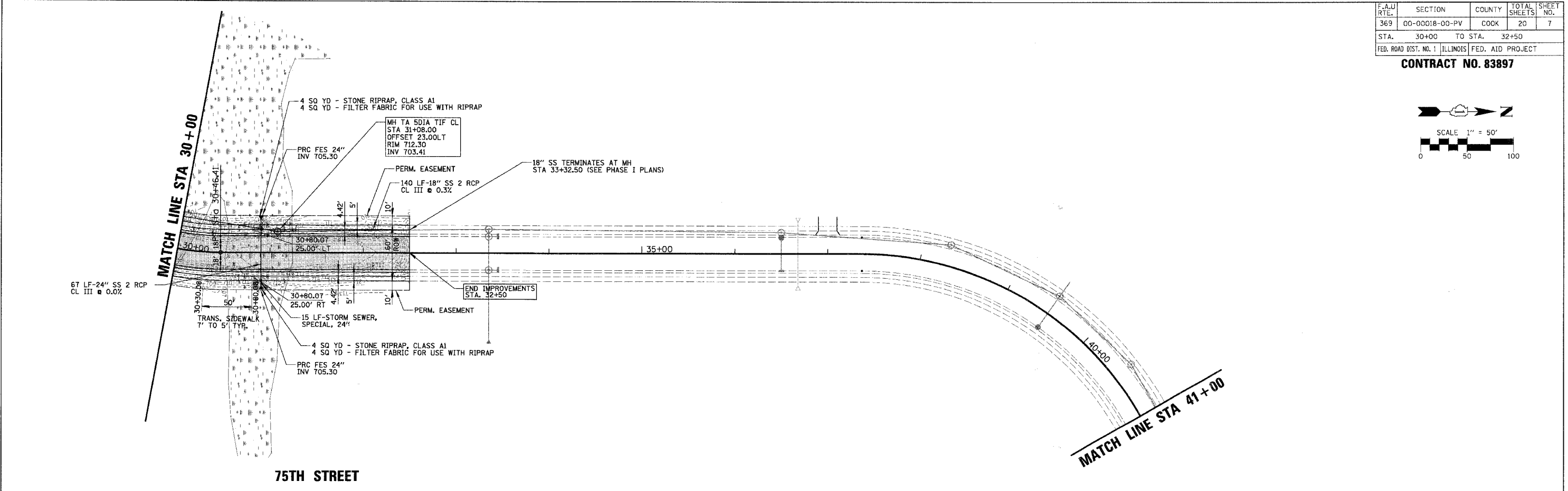
F.A.U. RTE.	SECTION	COUNTY	TOTAL SHEETS	SHEET NO.
369	00-00018-00-PV	COOK	20	7
STA.	30+00	TO STA.	32+50	
FED. ROAD DIST. NO. 1 ILLINOIS FED. AID PROJECT				

CONTRACT NO. 83897



PLAN
 DATE
 DRAWN BY
 CHECKED BY
 DATE
 NO.

PROFILE
 DATE
 DRAWN BY
 CHECKED BY
 DATE
 NO.

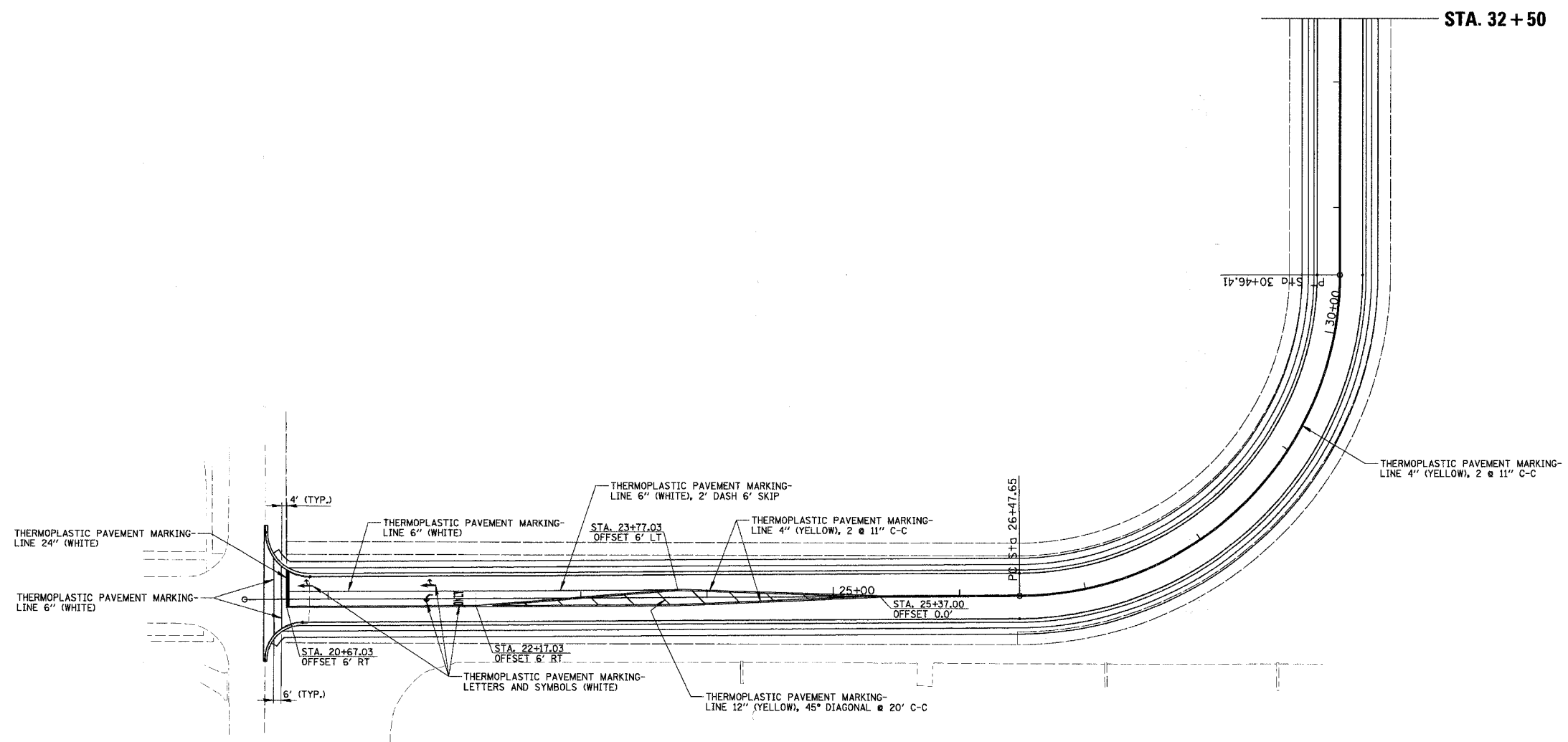
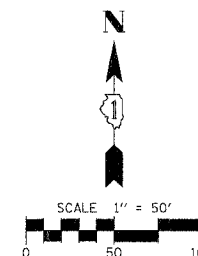


REVISIONS	
NAME	DATE

ILLINOIS DEPARTMENT OF TRANSPORTATION
**75th STREET
 PLAN AND PROFILE**
 SCALE: VERT. 1"=5'
 HORIZ. 1"=20'
 DATE 2/19/2008
 DRAWN BY EDT
 CHECKED BY LMF

F.A.U. RTE.	SECTION	COUNTY	TOTAL SHEETS	SHEET NO.
369	00-00018-00-PV	COOK	20	8
STA. 20+49.21	TO STA. 32+50	FED. ROAD DIST. NO. 1 ILLINOIS FED. AID PROJECT		

CONTRACT NO. 83897



REVISIONS	
NAME	DATE

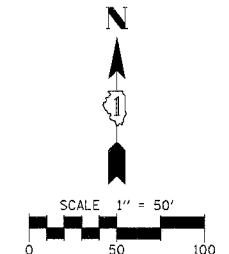
ILLINOIS DEPARTMENT OF TRANSPORTATION
**75th STREET
 PAVEMENT MARKING PLAN**

SCALE: VERT. 1" = 50'
 HORIZ. 1" = 50'
 DATE 2/19/2008

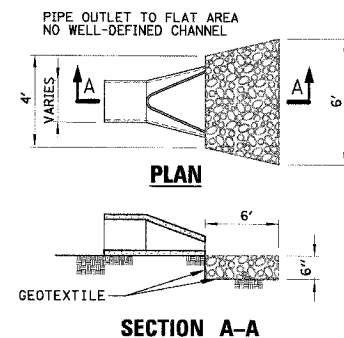
DRAWN BY EDT
 CHECKED BY LMF

F.A.U. RTE.	SECTION	COUNTY	TOTAL SHEETS	SHEET NO.
369	00-00018-00-PV	COOK	20	9
STA. 20+49.21	TO STA. 32+50			
FED. ROAD DIST. NO. 1 ILLINOIS		FED. AID PROJECT		

CONTRACT NO. 83897



ROCK CHECKS FOR WATERWAYS



- NOTES:
- THE FILTER FABRIC SHALL MEET THE REQUIREMENTS IN MATERIAL SPECIFICATIONS 592 GEOTEXTILE TABLE 1 OR 2, CLASS 1, II OR III.
 - THE ROCK RIPRAP SHALL MEET THE IDOT REQUIREMENTS FOR THE FOLLOWING GRADATION: RR CLASS A1.
 - THE RIPRAP SHALL BE PLACED ACCORDING TO CONSTRUCTION SPECIFICATION 61 LOOSE ROCK RIPRAP. THE ROCK MAY BE EQUIPMENT PLACED.

RIPRAP

EROSION CONTROL DETAIL

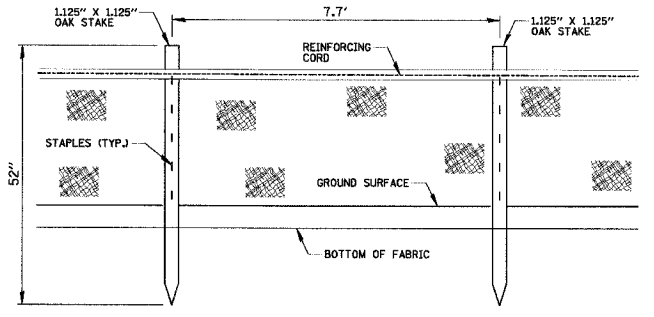
PLANTING SCHEDULE

STABILIZATION TYPE	JAN.	FEB.	MAR.	APR.	MAY	JUNE	JULY	AUG.	SEPT.	OCT.	NOV.	DEC.
PERMANENT SEEDING			A			*	*					
SEEDING CLASS 2A				B		*	*					
SODDING			*	*								
EROSION CONTROL BLANKET						*	*					

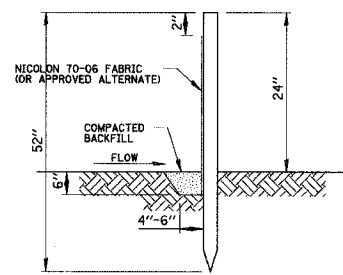
- A ALTA FESCUE 50 LBS/ACRE
ANNIAL RYE 10 LBS/ACRE
DAWSONS RED FESCUE 10 LBS/ACRE
SCALDIS HARD FESCUE 10 LBS/ACRE
FULTS SALT GRASS 30 LBS/ACRE
- B CLASS 2A (SEE SEED LIST)
- IRRIGATION NEEDED DURING JUNE AND JULY.
 - IRRIGATION NEEDED FOR 2 TO 3 WEEKS AFTER APPLYING SOD.

NOTES

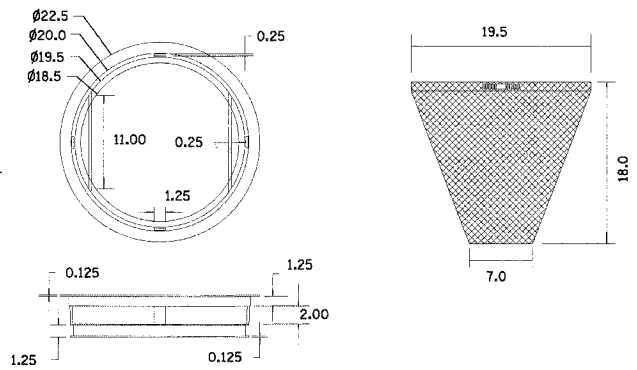
- UNLESS OTHERWISE INDICATED, ALL VEGETATIVE AND STRUCTURAL EROSION AND SEDIMENT CONTROL PRACTICES WILL BE CONSTRUCTED ACCORDING TO MINIMUM STANDARDS AND SPECIFICATIONS IN THE ILLINOIS URBAN MANUAL REVISED DECEMBER 2002.
- THE KANE-DUPAGE SOIL AND WATER CONSERVATION DISTRICT (KDSWCD) MUST BE NOTIFIED ONE WEEK PRIOR TO THE PRE-CONSTRUCTION CONFERENCE, ONE WEEK PRIOR TO THE COMMENCEMENT OF LAND DISTURBING ACTIVITIES, AND ONE WEEK PRIOR TO THE FINAL INSPECTION.
- A COPY OF THE APPROVED EROSION AND SEDIMENT CONTROL PLAN SHALL BE MAINTAINED ON THE SITE AT ALL TIMES.
- PRIOR TO COMMENCING LAND-DISTURBING ACTIVITIES IN AREAS OTHER THAN INDICATED ON THESE PLANS (INCLUDING BUT NOT LIMITED TO, ADDITIONAL PHASES OF DEVELOPMENT AND OFF-SITE BORROW OR WASTE AREAS) A SUPPLEMENTARY EROSION CONTROL PLAN SHALL BE SUBMITTED TO THE OWNER FOR REVIEW BY THE KDSWCD.
- THE CONTRACTOR SHALL BE RESPONSIBLE FOR INSTALLATION OF ANY ADDITIONAL EROSION CONTROL MEASURES NECESSARY TO PREVENT EROSION AND SEDIMENTATION AS DETERMINED BY THE KDSWCD.
- DURING DEWATERING OPERATIONS, WATER WILL BE PUMPED INTO SEDIMENT BASINS OR SILT TRAPS.
- INSPECTION AND MAINTENANCE WILL BE DONE WEEKLY AND AFTER EACH SIGNIFICANT RAINFALL EVENT AND INCLUDE FOR ON-SITE MAINTENANCE BY THE CONTRACTOR CONDUCTED WEEKLY SOIL EROSION AND STRUCTURE EMINENCE RECORDS.
- ALL EROSION CONTROL SHALL BE INSTALLED BEFORE GRADING COMMENCES.
- AS SHOWN ON THE PLANS, THE CONTRACTOR SHALL ATTACH AN ALUMINUM SIGN WITH THE FOLLOWING TEXT: PROTECTED WETLAND - NO INTRUSION. THE SIGN(S) SHALL BE ATTACHED TO THE STAKES BY A METHOD APPROVED BY THE ENGINEER. THE SIGN(S) WILL BE PROVIDED BY THE DEPARTMENT AND SHALL BE PICKED UP BY THE CONTRACTOR FROM THE DISTRICT ONE ROADSIDE DEVELOPMENT ARCHITECT IN SCHAUMBURG, ILLINOIS. SCHEDULING THE PICKUP OF THE SIGNS CAN BE ARRANGED BY CONTACTING THE DISTRICT ONE ROADSIDE DEVELOPMENT UNIT AT (847) 705-4171. WHEN WORK HAS BEEN COMPLETED, THE SIGN SHALL BE RETURNED TO THE DISTRICT ONE ROADSIDE DEVELOPMENT UNIT. THE COST OF PICKING UP, ATTACHING THE SIGNS TO THE TEMPORARY FENCE STAKES AND RETURNING THE SIGNS WILL NOT BE PAID FOR SEPARATELY, BUT SHALL BE INCLUDED IN THE CONTRACT UNIT PRICE FOR TEMPORARY FENCE.



PERIMETER EROSION BARRIER
N.T.S.



TYPICAL ROUND INLET PROTECTOR



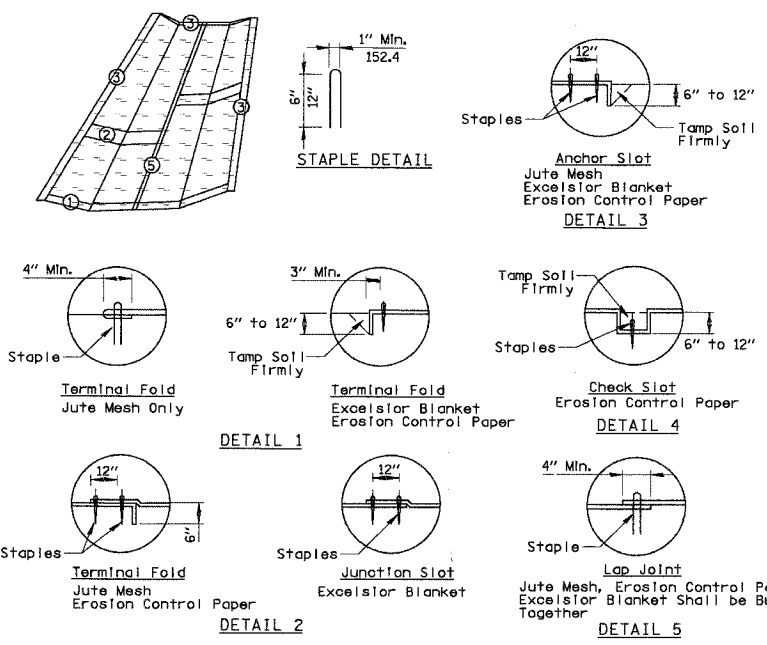
- NOTES:
- FRAME: Top ring constructed from 1 1/4" x 1 1/4" x 1/8" angle. Base ring fabricated from 1 1/2" x 1/2" x 1/8" channel. Handles and suspension brackets constructed from 1/4" x 1/4" flat. All steel conforming to ASTM-A36.

REPLACEABLE BAG: Constructed from 4 oz./sq.yd. non-woven polypropylene geotextile reinforced with polyester mesh. Connected to base ring with stainless steel strap and lock.

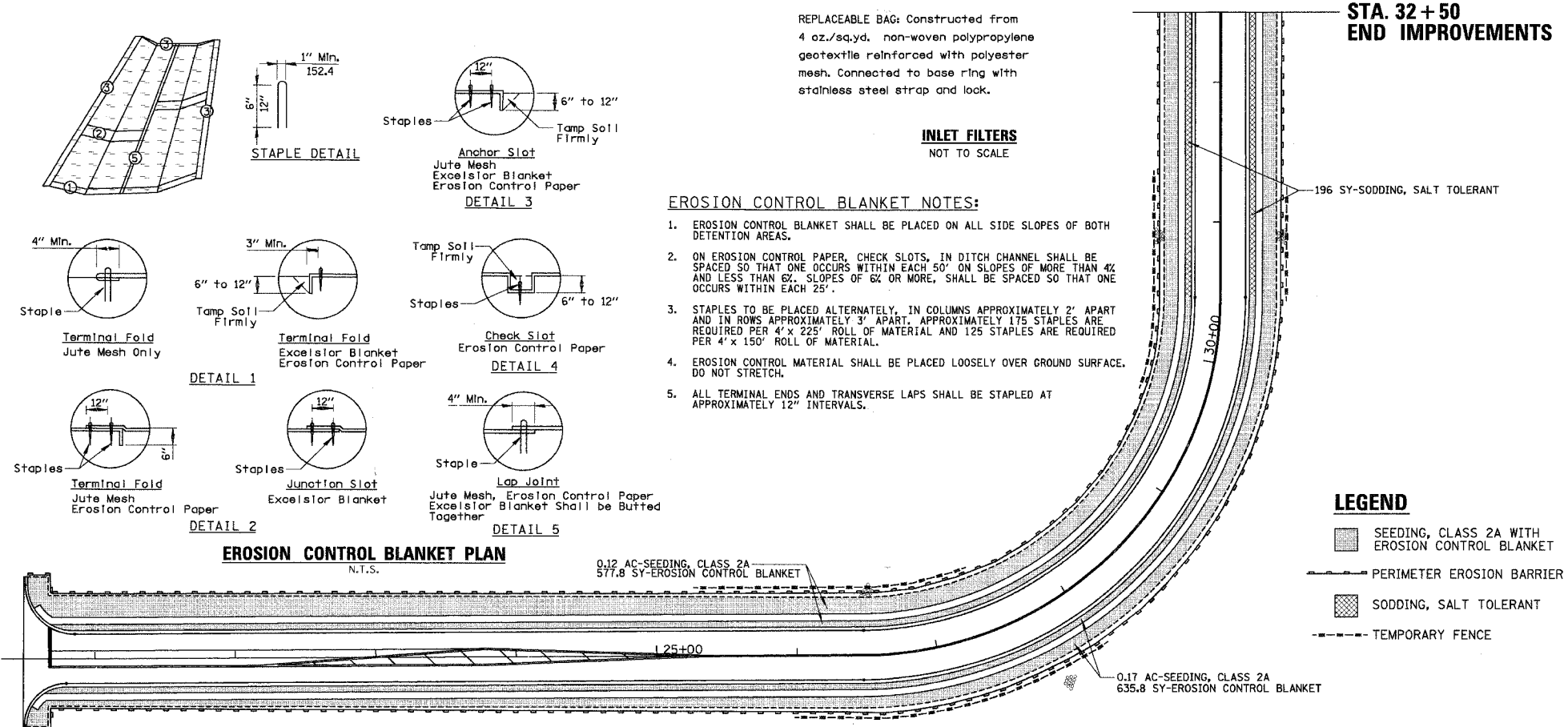
INLET FILTERS
NOT TO SCALE

EROSION CONTROL BLANKET NOTES:

- EROSION CONTROL BLANKET SHALL BE PLACED ON ALL SIDE SLOPES OF BOTH DETENTION AREAS.
- ON EROSION CONTROL PAPER, CHECK SLOTS, IN DITCH CHANNEL SHALL BE SPACED SO THAT ONE OCCURS WITHIN EACH 50' ON SLOPES OF MORE THAN 4% AND LESS THAN 6%. SLOPES OF 6% OR MORE, SHALL BE SPACED SO THAT ONE OCCURS WITHIN EACH 25'.
- STAPLES TO BE PLACED ALTERNATELY, IN COLUMNS APPROXIMATELY 2' APART AND IN ROWS APPROXIMATELY 3' APART. APPROXIMATELY 175 STAPLES ARE REQUIRED PER 4' x 225' ROLL OF MATERIAL AND 125 STAPLES ARE REQUIRED PER 4' x 150' ROLL OF MATERIAL.
- EROSION CONTROL MATERIAL SHALL BE PLACED LOOSELY OVER GROUND SURFACE. DO NOT STRETCH.
- ALL TERMINAL ENDS AND TRANSVERSE LAPS SHALL BE STAPLED AT APPROXIMATELY 12" INTERVALS.



EROSION CONTROL BLANKET PLAN
N.T.S.



**STA. 32+50
END IMPROVEMENTS**

LEGEND

- SEEDING, CLASS 2A WITH EROSION CONTROL BLANKET
- PERIMETER EROSION BARRIER
- SODDING, SALT TOLERANT
- TEMPORARY FENCE

REVISIONS	
NAME	DATE

ILLINOIS DEPARTMENT OF TRANSPORTATION
**75th STREET
LANDSCAPING AND EROSION
CONTROL PLAN**

SCALE: VERT. 1" = 50'
HORIZ. 1" = 50'
DATE 3/14/2008

DRAWN BY EDT
CHECKED BY LMF

THE STORM SEWER AND INLET PROTECTION SHALL BE INSTALLED AS EACH STRUCTURE IS COMPLETED.

F.A.U. RTE.	SECTION	COUNTY	TOTAL SHEETS	SHEET NO.
369	00-00018-00-PV	COOK	20	10
STA.	TO STA.			
FED. ROAD DIST. NO. 1 ILLINOIS FED. AID PROJECT				

CONTRACT NO. 83897

GENERAL NOTES

- THE OWNER, VILLAGE OF WILLOWBROOK SHALL BE NOTIFIED IN WRITING AT LEAST TWO (2) FULL WORKING DAYS PRIOR TO COMMENCEMENT OF CONSTRUCTION
- UTILITIES MAY EXIST IN THE AREA WHERE WORK IS PROPOSED. ACTUAL DEPTH OF UTILITIES ARE UNKNOWN. SHOULD ANY GIVEN UTILITY INTERFERE WITH THE PROPOSED WORK, PIPE ROUTING, ETC. THE CONTRACTOR SHALL, AT NO EXTRA COST TO THE OWNER, RESOLVE ANY AND ALL INTERFERENCE PROBLEMS.
- ALL UTILITY COMPANIES SHALL BE CONTACTED AND THEIR FACILITIES SHALL BE LOCATED PRIOR TO ANY WORK IN ANY EASEMENT, RIGHT-OF-WAY, OR SUSPECTED UTILITY LOCATION.
- CONTRACTOR SHALL BE RESPONSIBLE FOR ANY DAMAGE TO ALL DISTURBED AREAS WITHIN THE PROJECT LIMITS INCLUDING ALL ABOVE AND BELOW GRADE APPURTENANCES. THE CONTRACTOR SHALL REPAIR ALL DAMAGE TO THE SATISFACTION OF THE OWNER'S REPRESENTATIVE.
- ALL WORK SHALL BE IN ACCORDANCE WITH THE LATEST EDITION OF THE FOLLOWING SPECIFICATIONS, WHICH ARE HEREBY MADE A PART HEREOF:
 - "STANDARD SPECIFICATIONS FOR ROAD AND BRIDGE CONSTRUCTION IN ILLINOIS", AS PREPARED BY IDOT, LATEST EDITION.
 - "THE NATIONAL ELECTRICAL CODE," LATEST EDITION.
 - MUNICIPAL CODES.
- BEFORE INSTALLING LIGHT STANDARDS NEAR OVERHEAD UTILITIES CALL COM ED FOR LOCATION APPROVAL.
- FOR LOCATION OF EXISTING UNDERGROUND ELECTRICAL CABLE CALL COM ED.
- ELECTRICAL CONTRACTOR SHALL BE RESPONSIBLE FOR OBTAINING A PERMIT FROM THE VILLAGE BEFORE THE START OF WORK.
- THE CONTRACT DRAWINGS AND SPECIFICATIONS ARE NOT INTENDED TO SHOW EVERY AND ALL DETAILS OF WORK TO BE PERFORMED OR EQUIPMENT TO BE SUPPLIED. THE INTENT OF THE CONTRACT DRAWINGS AND SPECIFICATIONS IS TO ILLUSTRATE THE CONCEPTUAL DESIGN AND LAYOUT. THE CONTRACTOR SHALL BE KNOWLEDGABLE AND REGULARLY ENGAGED IN THE TYPE OF WORK DESCRIBED BY THESE CONTRACT DRAWINGS AND SPECIFICATIONS AND SHALL BE RESPONSIBLE FOR UNDERSTANDING THEIR INTENT. ANY WORK TO BE PERFORMED OR ITEM OF EQUIPMENT TO BE SUPPLIED WHICH IS NOT SPECIFICALLY CALLED FOR BY THESE CONTRACT DRAWINGS AND SPECIFICATIONS, BUT WHICH IS NECESSARY TO PROVIDE A COMPLETE AND SUCCESSFUL WORKING SYSTEM SHALL BE INCLUDED IN THE CONTRACTOR'S SCOPE OF WORK AT NO ADDITIONAL COST TO THE OWNER.
- THE WORK PERFORMED UNDER THIS CONTRACT SHALL IN NO WAY INTERFERE WITH THE NORMAL OPERATION OF ANY EXISTING UTILITY SERVICE. THE CONTRACTOR SHALL FURNISH ALL NECESSARY ITEMS OF EQUIPMENT REQUIRED TO MAINTAIN SUCH NORMAL OPERATION AT NO ADDITIONAL COST TO THE OWNER. THE COST ASSOCIATED FOR THIS WORK SHALL BE CONSIDERED INCIDENTAL TO THE COST OF THE CONTRACT.
- THE CABLE TRENCH SHALL BE BACKFILLED AND FIRMLY COMPACTED BEFORE THE LIGHT STANDARD IS ERRECTED.
- EXCAVATION FOR THE POLE SHALL BE MADE WITH AN ALUGER, 24 INCHES IN DIAMETER. IF SOIL CONDITIONS REQUIRE THE USE OF A LINER TO FORM THE HOLE, THE LINER SHALL BE WITHDRAWN AS THE CONCRETE IS DEPOSITED.
- THE ANCHOR RODS AND RACEWAYS SHALL BE PROPERLY SECURED IN PLACE BEFORE THE CONCRETE IS PLACED.
- THE FOUNDATION SHALL NOT PROTRUDE MORE THAN 100 MM (4 IN.) ABOVE THE FINISHED GRADE WITHIN A 1.5 M (60 IN.) CHORD ACROSS THE FOUNDATION, WITH ANCHOR RODS INCLUDED, IN ACCORDANCE WITH AASHTO GUIDELINES. IF THE FOUNDATION HEIGHT, INCLUDING ANCHOR RODS, EXTENDS BEYOND THESE SPECIFIED LIMITS, THE FOUNDATION SHALL BE REPLACED AT THE CONTRACTOR'S EXPENSE.
- THE TOP OF THE FOUNDATION SHALL BE CONSTRUCTED LEVEL. A LINER OR FORM SHALL BE USED TO PRODUCE A UNIFORM SMOOTH SIDE TO THE TOP OF THE FOUNDATION. FOUNDATION TOP SHALL BE CHAMFERED 20 MM (3/4 IN.).
- THE CONCRETE SHALL BE CLASS SL. CONCRETE SHALL CURE ACCORDING TO ARTICLE 1020.13 BEFORE LIGHT POLES ARE INSTALLED.
- ANCHOR RODS SHALL PROJECT 63.9 MM (2 3/4 IN.) ABOVE THE TOP OF THE FOUNDATION. IF BREAKAWAY COUPLINGS ARE SPECIFIED, THE CONTRACTOR SHALL CAREFULLY COORDINATE THE ANCHOR BOLT PROJECTION WITH THE INSTALLATION REQUIREMENTS OF THE BREAKAWAY COUPLINGS.
- THE RACEWAYS SHALL PROJECT 25.4 MM (1 IN.) ABOVE THE TOP OF THE FOUNDATION.
- PLACE A GROUND ROD 3/4" IN DIAMETER BY 10 FEET IN LENGTH 2'-0" FROM EACH LIGHT POLE CONCRETE FOUNDATION AND CONNECT TO THE POLE GROUNDING LUG VIA A #6 COPPER WIRE WITH A MECHANICAL CONNECTION AT THE GROUND ROD AND PIGTAIL SPLICE INSIDE THE POLE HANDHOLE.
- ALL POLE HANDHOLES SHALL FACE AWAY FROM TRAFFIC.
- 6" WIDE RED STANDARD WARNING TAPE SHALL BE INSTALLED ONE (1) FOOT ABOVE THE ROADWAY LIGHT CONDUCTOR WIRE FOR THE FULL LENGTH OF ALL TRENCHES.
- ALL UNIT DUCT SHALL BE 1/4" DIAMETER WITH 4-1/C #8 XLP AND 1/C #8 XLP TYPE-USE GROUND WIRE, OR AS SHOWN ON PLANS.
- ALL UNDERGROUND WIRING SHALL BE MINIMUM #8 COPPER (OR SIZE AS SHOWN ON THE PLANS) XLP TYPE-USE, EXTRA ABRASION RESISTANCE, 600 VOLTS, BURIED A MINIMUM OF 48 INCHES BELOW DRIVEWAYS AND ROAD CROSSINGS, AND 30 INCHES BELOW PARKWAY AREAS, FOLLOWING THE ROADWAY OR SIDEWALK EDGE.
- LUMINAIRES SHALL HAVE A TIGHT FIT ON DAVIT ARM TO THE VILLAGE'S SATISFACTION. THIS WORK SHALL INCLUDE FIELD ADJUSTING OF THE LUMINAIRE WHICH WILL BE INCIDENTAL TO THE "LUMINAIRE, SODIUM VAPOR, HORIZONTAL MOUNT, 250W" PAY ITEM.
- THE CONTRACTOR SHALL COORDINATE PLACEMENT OF ALL UNDERGROUND DUCT AND CONDUITS PRIOR TO CONSTRUCTION OF PROPOSED PAVEMENT, DRIVEWAYS AND SIDEWALKS.
- ALL TREE TRIMMING REQUIRED AS DIRECTED BY THE OWNER'S REPRESENTATIVE SHALL BE PERFORMED BY THE CONTRACTOR AND THE COST OF THIS WORK SHALL BE CONSIDERED INCIDENTAL TO THE CONTRACT.
- UPON COMPLETION OF THE PERMANENT LIGHTING SYSTEMS THE CONTRACTOR SHALL REQUEST IN WRITING A REQUEST FOR PREFINAL INSPECTION A MINIMUM OF THREE DAYS NOTICE TO THE VILLAGE OF WILLOWBROOK ELECTRICAL DEPT. AND THE OWNER'S REPRESENTATIVE. THE VILLAGE OF WILLOWBROOK SHALL BE THE ULTIMATE MAINTAINING AGENCY FOR THE LIGHTING SYSTEM ON 75 TH ST.
- CONTRACTOR SHALL SUBMIT SPECIFICATIONS, DRAWINGS AND CATALOG CUTS FOR ALL MATERIALS TO THE OWNERS REPRESENTATIVE FOR REVIEW BEFORE ORDERING ANY MATERIALS FOR PROJECT.

PROPOSED PHASE II ROADWAY LIGHTING SUMMARY OF QUANTITIES

Code No.	Description	Unit	Quantity
81900200	TRENCH AND BACKFILL FOR ELECTRICAL WORK	FOOT	1350
82102250	LUMINAIRE, SODIUM VAPOR, HORIZONTAL MOUNT, 250W	EACH	8
83002400	LIGHT POLE, ALUMINUM, 40 FT. MH, 10 FT. DAVIT ARM	EACH	8
83600200	LIGHT POLE FOUNDATION, 24" DIAMETER	FOOT	76
83800505	BREAKAWAY DEVICE, COUPLING WITH ALUMINUM SKIRT	EACH	32
XX004881	UNIT DUCT, WITH 4-1/C #8 AND 1/C #8 GND, 600V (XLP TYPE-USE) IN 1 1/4" DIA. POLYETHYLENE ELECTRICAL CONNETION TO EXISTING LIGHTING SYSTEM	FOOT	1500
		EACH	1

* SEE SPECIAL PROVISION FOR DETAILS

EXISTING ROADWAY DESIGN CRITERIA FROM PHASE I (YEAR 2000)

75 TH ST.	
IES ROADWAY CLASSIFICATION	COLLECTOR
IES AREA CLASSIFICATION	COMMERCIAL
LUMINANCE	
L_{avg} (CD/M ²)	0.8
L_{avg} / L_{min}	3.0
L_{max} / L_{min}	5.0
VEILING LUMINANCE	
L_v / L_{avg} (MAX)	0.4
ILLUMINANCE	
E_{avg} (fc)	1.1
E_{avg} / E_{min}	4.0
TYPICAL SPACING	150'

NOTES:

EXISTING DESIGN WAS BASED ON ANSI/IESNA RP-8 (1983) ROADWAY AND AREA CLASSIFICATION CRITERIA.

PROPOSED ROADWAY DESIGN CRITERIA FOR PHASE II (YEAR 2008)

75 TH ST.	
IES ROADWAY CLASSIFICATION	COLLECTOR
IES AREA CLASSIFICATION	MEDIUM PEDESTRIAN CONFLICT
LUMINANCE	
L_{avg} (CD/M ²)	0.6
L_{avg} / L_{min}	3.5
L_{max} / L_{min}	6.0
VEILING LUMINANCE	
L_v / L_{avg} (MAX)	0.4
ILLUMINANCE	
E_{avg} (fc)	0.9
E_{avg} / E_{min}	4.0
TYPICAL SPACING	150'

NOTES:

MEDIUM PEDESTRIAN CONFLICT AREA SELECTED TO MATCH PHASE I DESIGN CRITERIA AND POLE SPACING.

LEGEND

- PROPOSED LIGHT POLE WITH 250W HIGH PRESSURE SODIUM LUMINAIRE MOUNTED AT 40' (SEE LIGHT STANDARD DETAIL FOR MODEL INFORMATION)
- EXISTING LIGHTPOLE TO REMAIN (REFER TO PLANS FOR LOCATIONS)
- PROPOSED 4-1/C #8 & 1/C #8 GROUND TYPE XLP-USE CABLES IN 1/4" UNIT DUCT, IN TRENCH
- POLE NUMBER
- CIRCUIT IDENTIFIER
- OFFSET
- STATION
- EXISTING SANITARY SEWER
- EXISTING STORM SEWER
- EXISTING WATERMAIN
- EXISTING OVERHEAD WIRES
- EXISTING GASLINE
- EXISTING CABLES IN UNIT DUCT
- EXISTING LIGHTING CONTROLLER
- EXISTING COM ED SERVICE LOCATION

REVISIONS	
NAME	DATE

ILLINOIS DEPARTMENT OF TRANSPORTATION
75th STREET
GENERAL NOTES AND
SUMMARY OF QUANTITIES

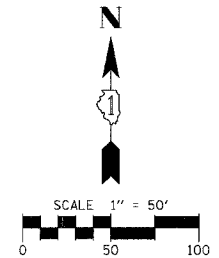
SCALE: VERT.
HORIZ.
DATE: 2/19/2008
DRAWN BY: KB
CHECKED BY: JPC

PROPOSED ROADWAY DESIGN CRITERIA

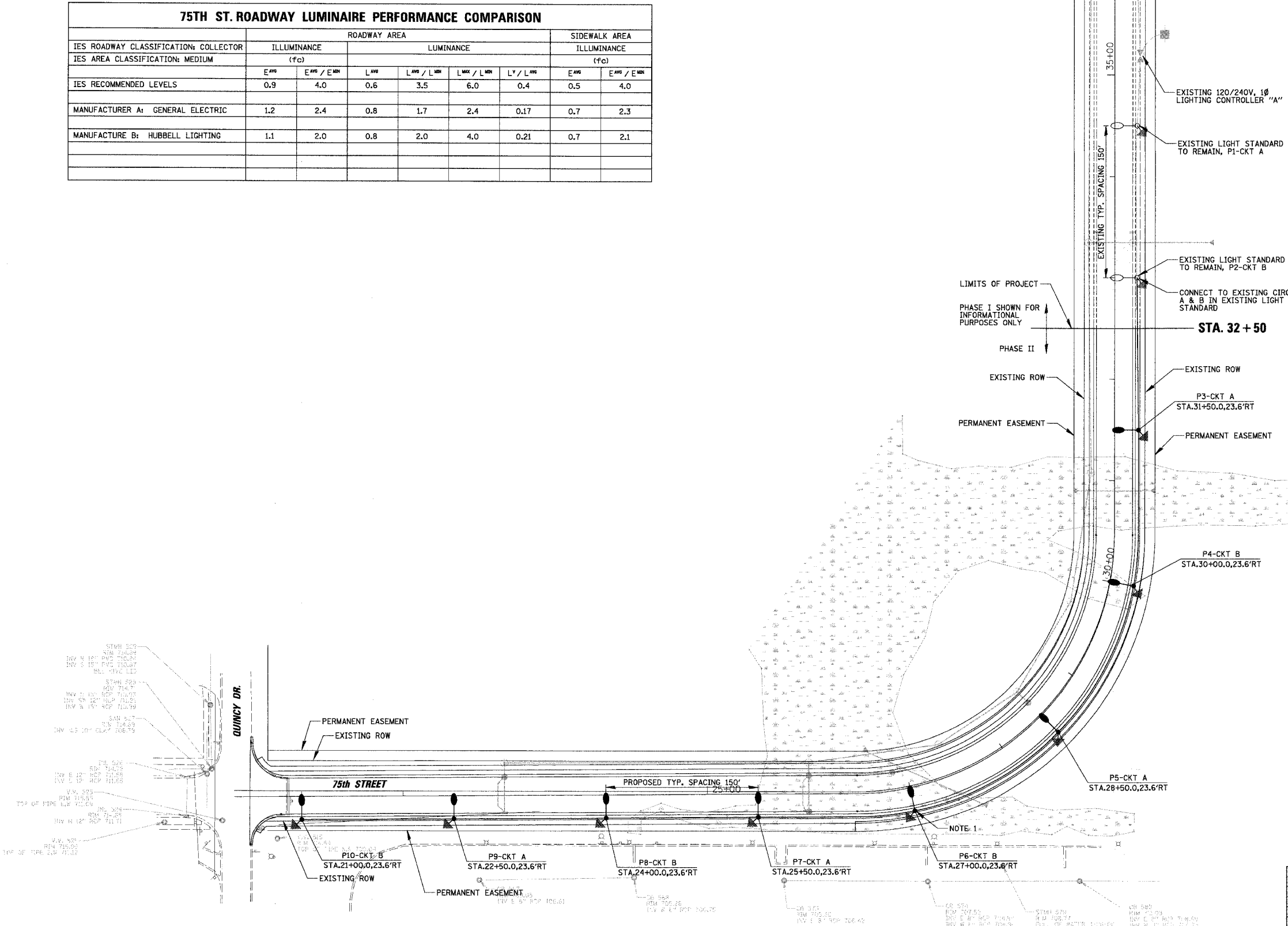
75TH ST. ROADWAY LUMINAIRE PERFORMANCE COMPARISON									
IES ROADWAY CLASSIFICATION: COLLECTOR	ROADWAY AREA						SIDEWALK AREA		
	ILLUMINANCE (fc)		LUMINANCE				ILLUMINANCE (fc)		
IES AREA CLASSIFICATION: MEDIUM	E _{AVG}	E _{AVG} / E _{MIN}	L _{AVG}	L _{AVG} / L _{MIN}	L _{MAX} / L _{MIN}	L _Y / L _{AVG}	E _{AVG}	E _{AVG} / E _{MIN}	
IES RECOMMENDED LEVELS	0.9	4.0	0.6	3.5	6.0	0.4	0.5	4.0	
MANUFACTURER A: GENERAL ELECTRIC	1.2	2.4	0.8	1.7	2.4	0.17	0.7	2.3	
MANUFACTURER B: HUBBELL LIGHTING	1.1	2.0	0.8	2.0	4.0	0.21	0.7	2.1	

F.A.U. RTE.	SECTION	COUNTY	TOTAL SHEETS	SHEET NO.
369	00-00018-00-PV	COOK	20	11
STA.	TO STA.			
FED. ROAD DIST. NO. 1 ILLINOIS FED. AID PROJECT				

CONTRACT NO. 83897



REFER TO PHASE I PLANS FOR CONTINUATION



- LEGEND**
- PROPOSED LIGHT POLE WITH 250W HIGH PRESSURE SODIUM LUMINAIRE MOUNTED AT 40' (SEE LIGHT STANDARD DETAIL FOR MODEL INFORMATION)
 - EXISTING LIGHTPOLE TO REMAIN (REFER TO PLANS FOR LOCATIONS)
 - PROPOSED 4-1/2" #8 & 1/2" #8 GROUND TYPE XLP-USE CABLES IN 1/4" UNIT DUCT, IN TRENCH
 - POLE NUMBER
 - CIRCUIT IDENTIFIER
 - OFFSET
 - STATION
 - EXISTING SANITARY SEWER
 - EXISTING STORM SEWER
 - EXISTING WATERMAIN
 - EXISTING OVERHEAD WIRES
 - EXISTING GASLINE
 - EXISTING CABLES IN UNIT DUCT
 - EXISTING LIGHTING CONTROLLER
 - EXISTING COM ED SERVICE LOCATION

NOTES:
 1. LIGHT POLE P6 SHALL HAVE A 20'-0" CONCRETE FOUNDATION DEPTH (REFER TO "CONCRETE FOUNDATION DETAIL" ON SHEET 13).

REVISIONS	
NAME	DATE

ILLINOIS DEPARTMENT OF TRANSPORTATION
75th STREET ROADWAY LIGHTING PLAN

SCALE: VERT. _____
 HORIZ. _____
 DATE 2/19/2008
 DRAWN BY KB
 CHECKED BY JPC

F.A.U. RTE.	SECTION	COUNTY	TOTAL SHEETS	SHEET NO.
369	00-00018-00-PV	COOK	20	12
STA.	TO STA.			
FED. ROAD DIST. NO. 1 ILLINOIS FED. AID PROJECT				

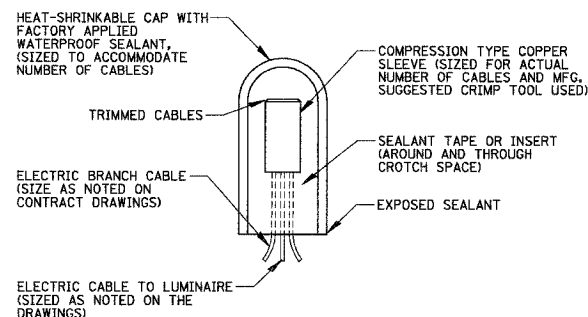
CONTRACT NO. 83897

CIRCUIT ID	250W HPS 240V LIGHT STANDARD	LOAD/UNIT (WATTS)	TOTAL CIRCUIT LOAD (WATTS)	TOTAL CIRCUIT LOAD (AMPS)
A	5	305 W	1525 W	6.4 A
B	5	305 W	1525 W	6.4 A
C	5	305 W	1525 W	6.4 A
D	5	305 W	1525 W	6.4 A
TOTAL			6100 W	25 A

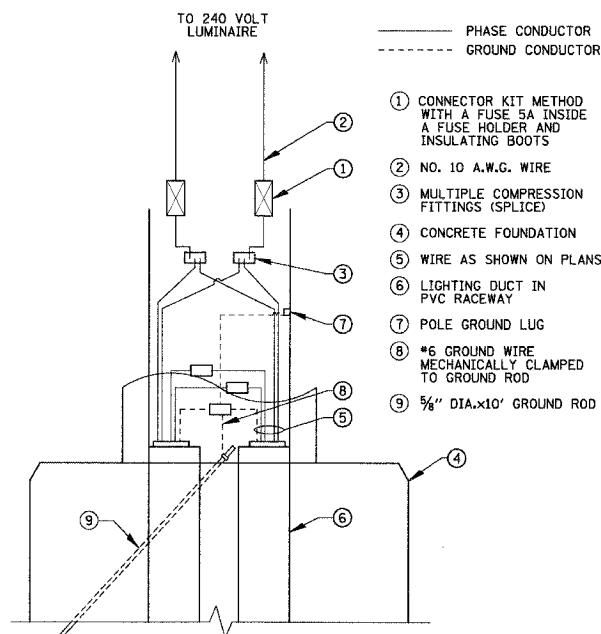
NOTE:
EXISTING CIRCUIT LOADS ARE SHOWN IN HALF TONE (FOR INFORMATIONAL PURPOSES ONLY).

EXISTING CONTROLLER "A" LIGHTING CIRCUIT LOADS

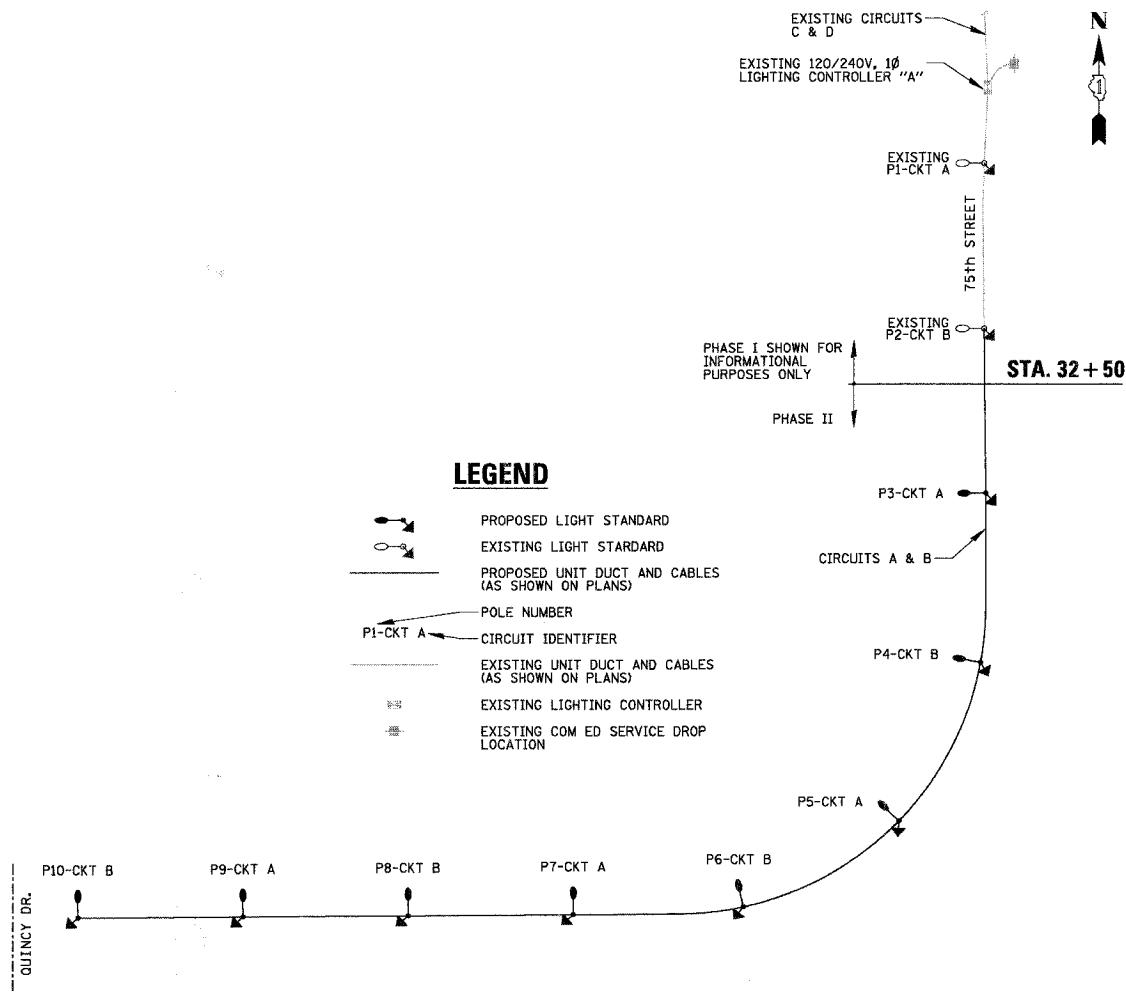
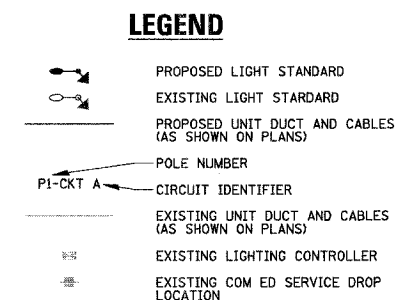
NOTE:
ALL CONDUCTORS IN THE UNIT DUCT RUNS SHALL HAVE COLOR CODED INSULATION THROUGHOUT THE ENTIRE LENGTH OF THE CONDUCTOR. THE COLOR IDENTIFICATION FOR THE SYSTEM GROUND SHALL BE GREEN. THE PHASE CONDUCTORS SHALL BE PER IDOT STANDARD 1066.02 (A).



SPlicing ELECTRIC CABLE
N.T.S.



POLE HANDHOLE WIRING DIAGRAM
N.T.S.



ONE LINE CIRCUIT DIAGRAM EXISTING CONTROLLER "A"
N.T.S.

REVISIONS	
NAME	DATE

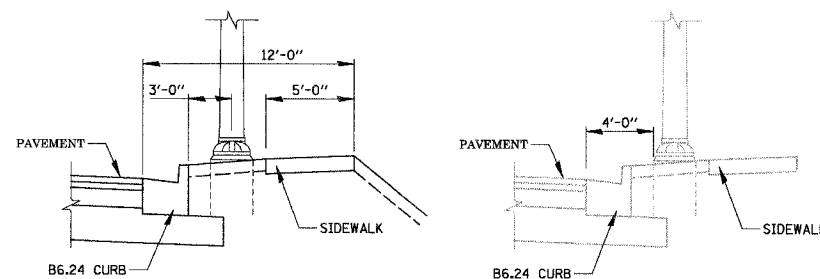
ILLINOIS DEPARTMENT OF TRANSPORTATION
75th STREET
ROADWAY LIGHTING DETAILS (1 OF 2)

SCALE: VERT. HORIZ. DATE: 2/19/2008 DRAWN BY: KB CHECKED BY: JPC

F.A.U. RTE.	SECTION	COUNTY	TOTAL SHEETS	SHEET NO.
369	00-00018-00-PV	COOK	20	13
STA.		TO STA.		
FED. ROAD DIST. NO. 1 ILLINOIS FED. AID PROJECT				

CONTRACT NO. 83897

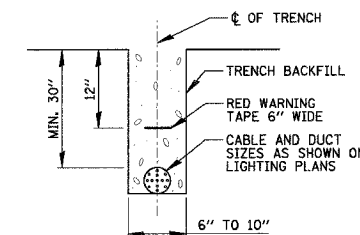
MATERIAL SPECIFICATIONS	
POLE & ARM TUBES	6063-T6
ANCHOR BASE & ALUM. COVER SKIRT	AA356-T6
SMALL HARDWARE	AISI 300 SERIES STN. STL.
EXTRUSIONS	6063-T6
H.H. FRAME	AA356-T6
BOLT COVERS	ASTM-B25(AA356)



PROPOSED POLES BETWEEN STA. 20+49.21 TO STA. 32+50

EXISTING POLES BETWEEN STA. 32+50 TO STA. 49+50

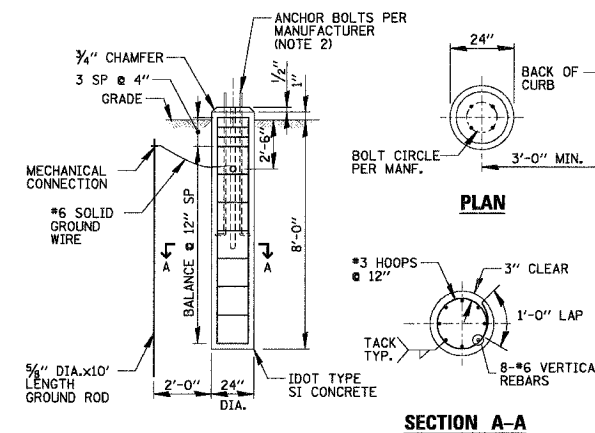
ROADWAY LIGHTING CROSS SECTION LAYOUT
N.T.S.



ELECTRIC CONDUIT UNDER PAVEMENT
N.T.S.

24 IN. DIA. FOUNDATION DEPTH TABLE
DESIGN BASE ON 80 M.P.H. AASHTO WIND LOADING

TYPE OF SOIL	FOUNDATION DEPTH D	REINFORCEMENT IN FOUNDATION	
		VERTICAL BARS	HORIZONTAL BARS
ROCK OR SOLIDIFIED SLAG	5'-0"	NONE	NONE
DENSE SAND	7'-9"	8-#6 x 7'-4"	#3 x 73'
MEDIUM SAND	8'-3"	8-#6 x 7'-10"	#3 x 78'
LOOSE SAND	9'-0"	8-#6 x 8'-7"	#3 x 85'
STIFF CLAY	7'-0"	8-#6 x 6'-7"	#3 x 66'
MEDIUM CLAY	9'-6"	8-#6 x 9'-1"	#3 x 90'
SOFT CLAY	13'-0"	8-#6 x 12'-7"	#3 x 122'



NOTES:

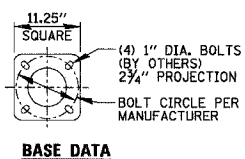
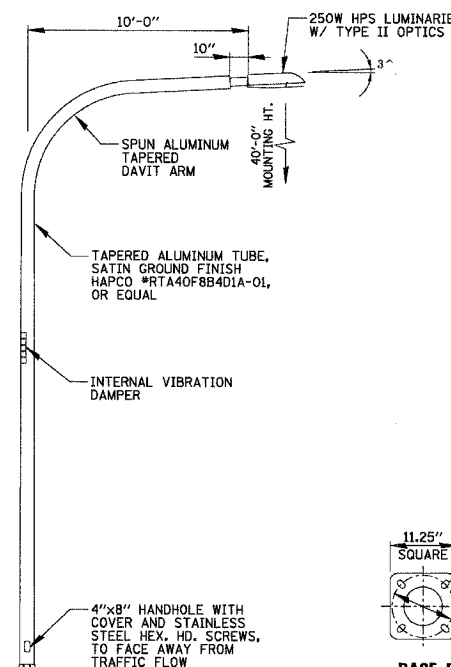
1. LIGHT POLE P6 SHALL HAVE A 20'-0" CONCRETE FOUNDATION DEPTH.
2. REFER TO "GENERAL NOTES" ON SHEET 10 FOR FOUNDATION NOTES.
3. FOUNDATIONS SHALL NOT PROTRUDE MORE THAN 4" ABOVE FINISHED GRADE INCLUDING ANCHOR RODS.

CONCRETE FOUNDATION DETAIL
N.T.S.

REVISIONS	
NAME	DATE

ILLINOIS DEPARTMENT OF TRANSPORTATION
75th STREET
ROADWAY LIGHTING DETAILS (2 OF 2)

SCALE: VERT. HORIZ.
DATE 2/19/2008
DRAWN BY KB
CHECKED BY JPC

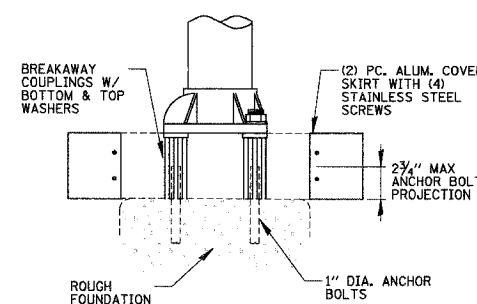


MFG.	MTG. HT.	LUMINARIE MODEL NO.	ARM LENGTH
A	40'-0"	GE #MDCL25SOA12FNC22	10'-0"
B	40'-0"	HUBBELL LIGHTING #RMC-3-3-RMD-25S38-3	10'-0"

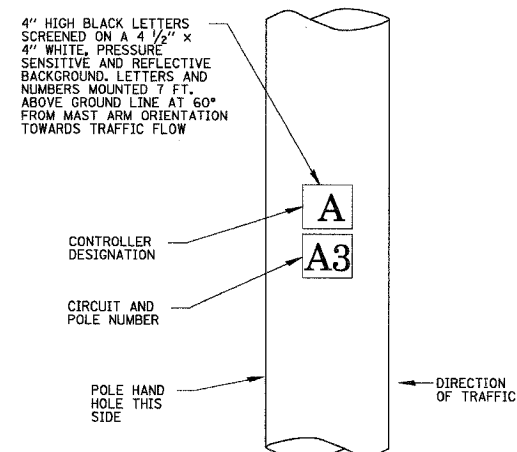
NOTES:

1. HUBBELL LIGHTING LUMINARIE SHALL BE FIELD ADJUSTED TO A TYPE II DISTRIBUTION.

LIGHT STANDARD DETAIL
N.T.S.



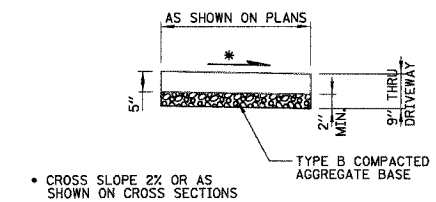
BREAKAWAY COUPLING DETAIL
N.T.S.



POLE IDENTIFICATION
N.T.S.

F.A.U. RTE.	SECTION	COUNTY	TOTAL SHEETS	SHEET NO.
369	00-00018-00-PV	COOK	20	14
STA.		TO STA.		
FED. ROAD DIST. NO. 1		ILLINOIS	FED. AID PROJECT	

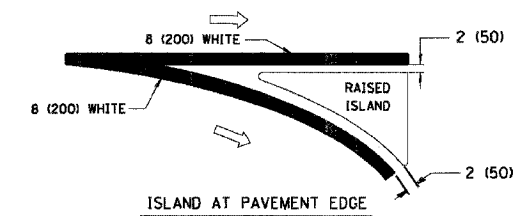
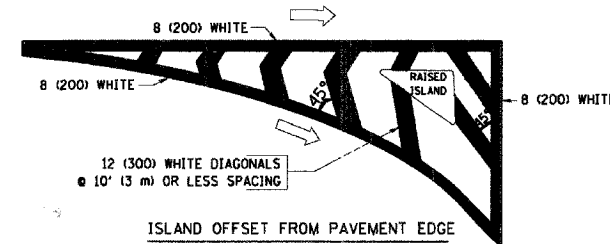
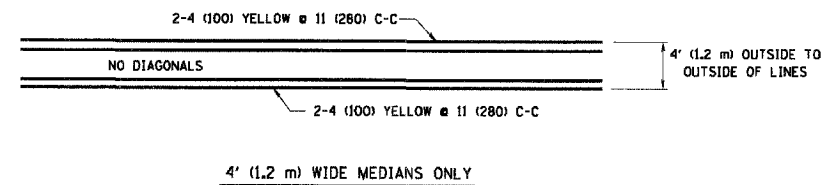
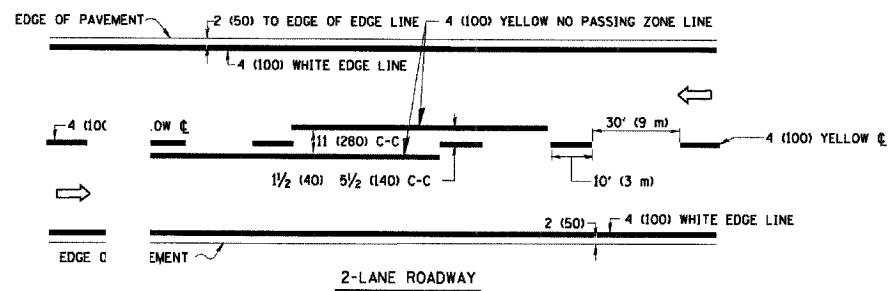
CONTRACT NO. 83897



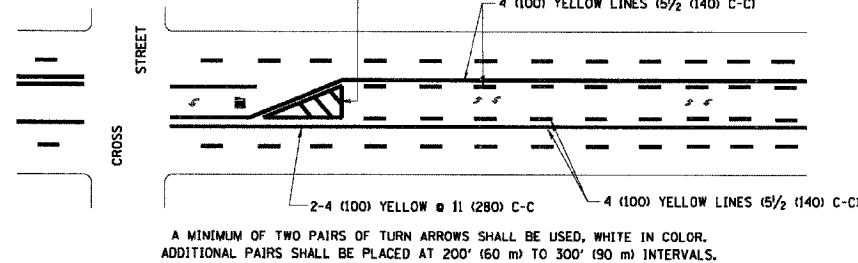
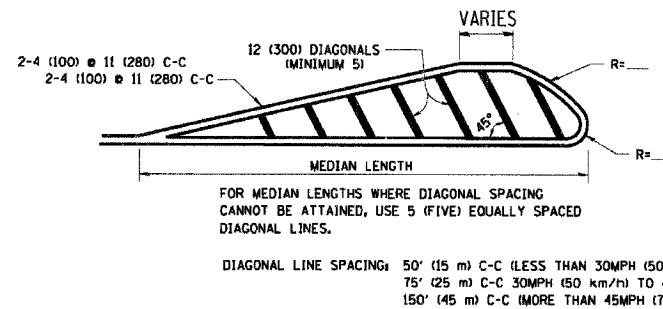
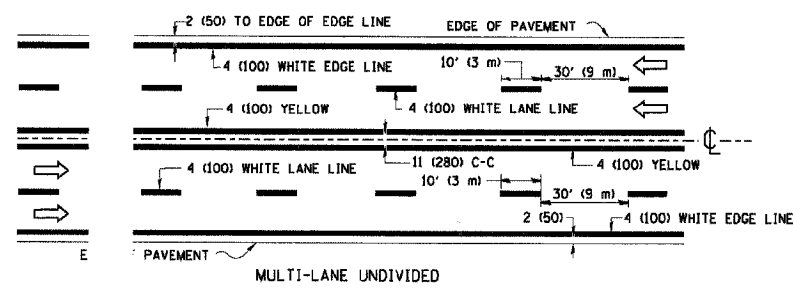
P.C.C. SIDEWALK 5 INCH, DETAIL
N.T.S.

REVISIONS		ILLINOIS DEPARTMENT OF TRANSPORTATION
NAME	DATE	
		75th STREET CONSTRUCTION DETAILS SCALE: VERT. N.T.S. HORIZ. N.T.S. DATE 2/19/2008 DRAWN BY EDT CHECKED BY LMF

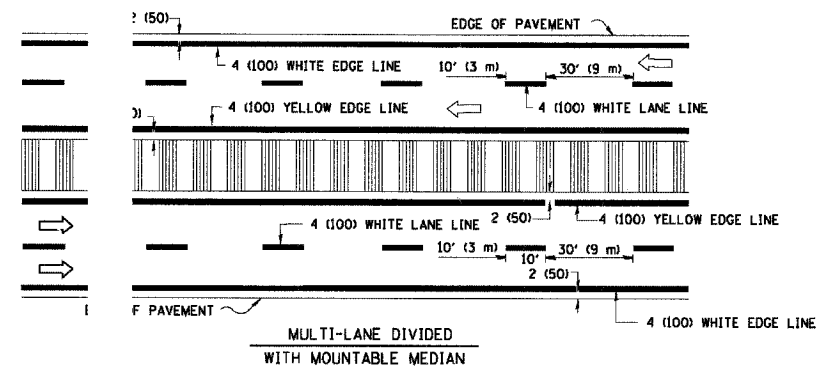
CONTRACT NO. 83897



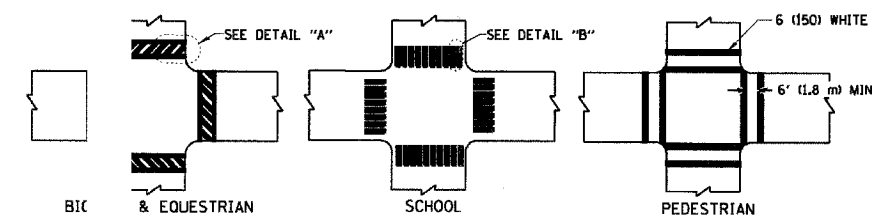
TYPICAL ISLAND MARKING



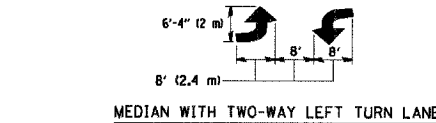
TYPICAL PAINTED MEDIAN MARKING



TYPICAL LANE AND EDGE LINE MARKING



TYPICAL CROSSWALK MARKING



TYPICAL LEFT (OR RIGHT) TURN LANE

FULL SIZE LETTERS 8' (2.4 m) AND ARROWS SHALL BE USED. AREA = 15.6 SQ. FT. (1.5 m²)

* TURN LANES IN EXCESS OF 400' (120 m) IN LENGTH MAY HAVE AN ADDITIONAL SET OF ARROW - "ONLY" INSTALLED MIDWAY BETWEEN THE OTHER TWO SETS OF ARROW - "ONLY".

TYPICAL TURN LANE MARKING

TYPE OF MARKING	WIDTH OF LINE	PATTERN	COLOR	SPACING / REMARKS
CENTERLINE ON 2 LANE PAVEMENT	4 (100)	SKIP-DASH	YELLOW	10' (3 m) LINE WITH 30' (9 m) SPACE
CENTERLINE ON MULTI-LANE UNDIVIDED PAVEMENT	2 @ 4 (100)	SOLID	YELLOW	11 (280) C-C
NO PASSING ZONE LINES FOR ONE DIRECTION FOR BOTH DIRECTIONS	4 (100) 2 @ 4 (100)	SOLID SOLID	YELLOW YELLOW	5/2 (140) C-C FROM SKIP-DASH CENTERLINE 11 (280) C-C OMIT SKIP-DASH CENTERLINE BETWEEN
LANE LINES	4 (100) 5 (125) ON FREEWAYS	SKIP-DASH SKIP-DASH	WHITE WHITE	10' (3 m) LINE WITH 30' (9 m) SPACE
DOTTED LINES (EXTENSIONS OF CENTER, LANE OR TURN LANE MARKINGS)	SAME AS LINE BEING EXTENDED	SKIP-DASH	SAME AS LINE BEING EXTENDED	2' (600) LINE WITH 6' (1.8 m) SPACE
EDGE LINES	4 (100)	SOLID	YELLOW-LEFT WHITE-RIGHT	OUTLINE MOUNTABLE MEDIANS IN YELLOW; EDGE LINES ARE NOT USED NEXT TO BARRIER CURB
TURN LANE MARKINGS	6 (150) LINE; FULL SIZE LETTERS & SYMBOLS (8' (2.4m))	SOLID	WHITE	SEE TYPICAL TURN LANE MARKING DETAIL
TWO WAY LEFT TURN MARKING	2 @ 4 (100) EACH DIRECTION 8' (2.4m) LEFT ARROW	SKIP-DASH AND SOLID IN PAIRS	YELLOW WHITE	10' (3 m) LINE WITH 30' (9 m) SPACE FOR SKIP-DASH; 5/2 (140) C-C BETWEEN SOLID LINE AND SKIP-DASH LINE SEE TYPICAL TWO-WAY LEFT TURN MARKING DETAIL
CROSSWALK LINES (PEDESTRIAN) A. DIAGONALS (BIKE & EQUESTRIAN) B. LONGITUDINAL BARS (SCHOOL)	2 @ 6 (150) 2 (600) APART 12 (300) @ 45° 12 (300) @ 90°	SOLID SOLID SOLID	WHITE WHITE WHITE	NOT LESS THAN 6' (1.8 m) APART 2' (600) APART 2' (600) APART SEE TYPICAL CROSSWALK MARKING DETAILS.
STOP LINES	24 (600)	SOLID	WHITE	PLACE 4' (1.2 m) IN ADVANCE OF AND PARALLEL TO CROSSWALK, IF PRESENT. OTHERWISE, PLACE AT DESIRED STOPPING POINT, PARALLEL TO CROSSROAD CENTERLINE, WHERE POSSIBLE
PAINTED MEDIANS	2 @ 4 (100) WITH 12 (300) DIAGONALS @ 45° NO DIAGONALS USED FOR 4' (1.2 m) WIDE MEDIANS	SOLID	YELLOW; TWO WAY TRAFFIC WHITE; ONE WAY TRAFFIC	11 (280) C-C FOR THE DOUBLE LINE SEE TYPICAL PAINTED MEDIAN MARKING.
GORE MARKING AND CHANNELIZING LINES	8 (200) WITH 12 (300) DIAGONALS @ 45°	SOLID	WHITE	DIAGONALS: 15' (4.5 m) C-C (LESS THAN 30MPH (50 km/h)) 20' (6 m) C-C (30MPH (50 km/h) TO 45MPH (70 km/h)) 30' (9 m) C-C (OVER 45MPH (70 km/h))
RAILROAD CROSSING	24 (600) TRANSVERSE LINES; "RR" IS 6' (1.8 m) LETTERS; 16 (400) LINE FOR "X"	SOLID	WHITE	SEE STATE STANDARD 780001 AREA OF: "R"=3.6 SQ. FT. (0.33 m ²) EACH "X"=54.0 SQ. FT. (5.0 m ²)
SHOULDER DIAGONALS	12 (300) @ 45°	SOLID	WHITE - RIGHT YELLOW - LEFT	50' (15 m) C-C (LESS THAN 30MPH (50 km/h)) 75' (25 m) C-C (30 MPH (50 km/h) TO 45MPH (70 km/h)) 150' (45 m) C-C (OVER 45MPH (70 km/h))

FOR FURTHER DETAILS ON PAVEMENT MARKING REFER TO STANDARD SPECIFICATIONS FOR ROAD AND BRIDGE CONSTRUCTION AND STATE STANDARD 780001.

All dimensions are in inches (millimeters) unless otherwise shown.

REVISIONS	
NAME	DATE
EVERS	03-19-90
T. RAMMACHER	10-27-94
ALEX HOUSEH	10-09-96
ALEX HOUSEH	10-17-96
T. RAMMACHER	01-06-00

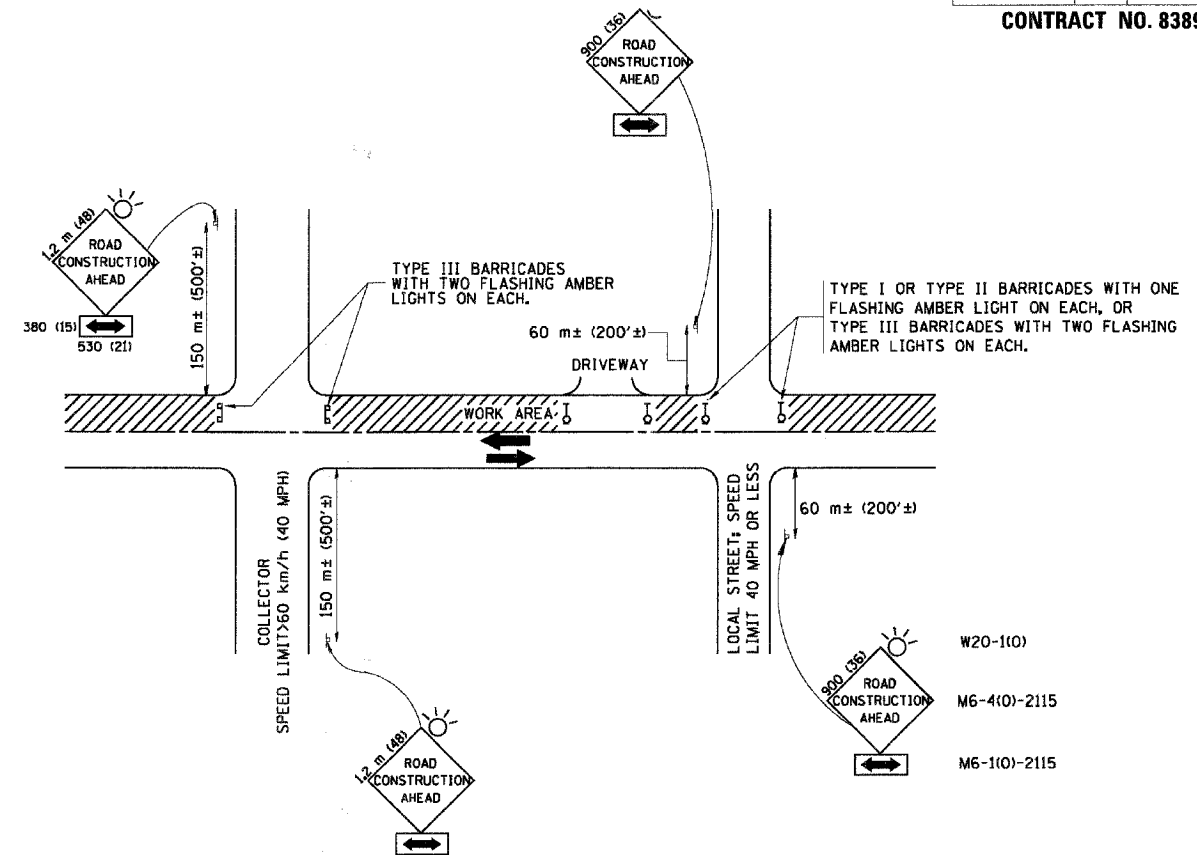
ILLINOIS DEPARTMENT OF TRANSPORTATION
DISTRICT ONE
TYPICAL PAVEMENT MARKINGS

SCALE: NONF 07/25/05

DRAWN BY CADD

F.A.U. RT.	SECTION	COUNTY	TOTAL SHEETS	SHEET NO.
369	00-00018-00-PV	COOK	20	16
STA.		TO STA.		
FED. ROAD DIST. NO. 1 ILLINOIS FED. AID PROJECT				

CONTRACT NO. 83897



TRAFFIC CONTROL AND PROTECTION FOR SIDE ROADS, INTERSECTIONS, AND DRIVEWAYS

NOTES:

A. FOR NO LANE RESTRICTION ON THE SIDE ROAD OR DRIVEWAYS

1. SIDE ROAD WITH A SPEED LIMIT OF 60 km/h (40 MPH) OR LESS AS SHOWN ON THE DRAWING AND AS DIRECTED BY THE ENGINEER:

a) ONE ROAD CONSTRUCTION AHEAD SIGN 900x900 (36x36) WITH A FLASHER AND FLAG MOUNTED ON IT APPROXIMATELY 60 m (200') IN ADVANCE OF THE MAIN ROUTE.

b) THE CLOSED PORTION OF THE MAIN ROUTE SHALL BE PROTECTED BY BLOCKING WITH TYPE I, TYPE II OR TYPE III BARRICADES, 1/3 OF THE CROSS SECTION OF THE CLOSED PORTION.

2. SIDE ROAD WITH A SPEED LIMIT GREATER THAN 60 km/h (40 MPH) AS SHOWN ON THE DRAWING AND AS DIRECTED BY THE ENGINEER:

a) ONE ROAD CONSTRUCTION AHEAD SIGN 1.2 m x 1.2 m (48x48) WITH A FLASHER MOUNTED ON IT APPROXIMATELY 150 m (500') IN ADVANCE OF THE MAIN ROUTE.

b) THE CLOSED PORTION OF THE MAIN ROUTE SHALL BE PROTECTED BY BLOCKING WITH TYPE III BARRICADES, 1/2 OF THE CROSS SECTION OF THE CLOSED PORTION.

3. WHEN THE SIDE ROAD LIES BETWEEN THE BEGINNING OF THE MAINLINE SIGNING AND THE WORK ZONE, A SINGLE HEADED ARROW (M6-1) SHALL BE USED IN LIEU OF THE DOUBLE HEADED ARROW (M6-4).

B. FOR A LANE CLOSURE ON A SIDE ROAD OR DRIVEWAY:

USE APPLICABLE PORTIONS OF THE TYPICAL APPLICATION OF TRAFFIC CONTROL DEVICES (STD. 701501, STD. 701606 OR THE APPROPRIATE STANDARD). THE SPACING OF SIGNS AND BARRICADES SHALL BE ADJUSTED FOR FIELD CONDITIONS AS DIRECTED BY THE ENGINEER. THE DIRECTIONAL ARROW SHALL BE COVERED OR REMOVED WHEN NO LONGER CONSISTENT WITH THE SIDE ROAD LANE CLOSURE.

C. ADVANCE WARNING SIGNS ARE TO BE OMITTED ON DRIVEWAY UNLESS OTHERWISE NOTED.

D. THE TRAFFIC CONTROL AND PROTECTION FOR SIDE ROADS, INTERSECTIONS, AND DRIVEWAYS SHALL BE INCIDENTAL TO THE COST OF SPECIFIED TRAFFIC CONTROL STANDARDS OR ITEMS.

REVISIONS	
NAME	DATE
LHA	6/89
T. RAMMACHER	09/08/94
J. OBERLE	10/18/95
A. HOUSEH	03/06/96
A. HOUSEH	10/15/96
T. RAMMACHER	01/06/00

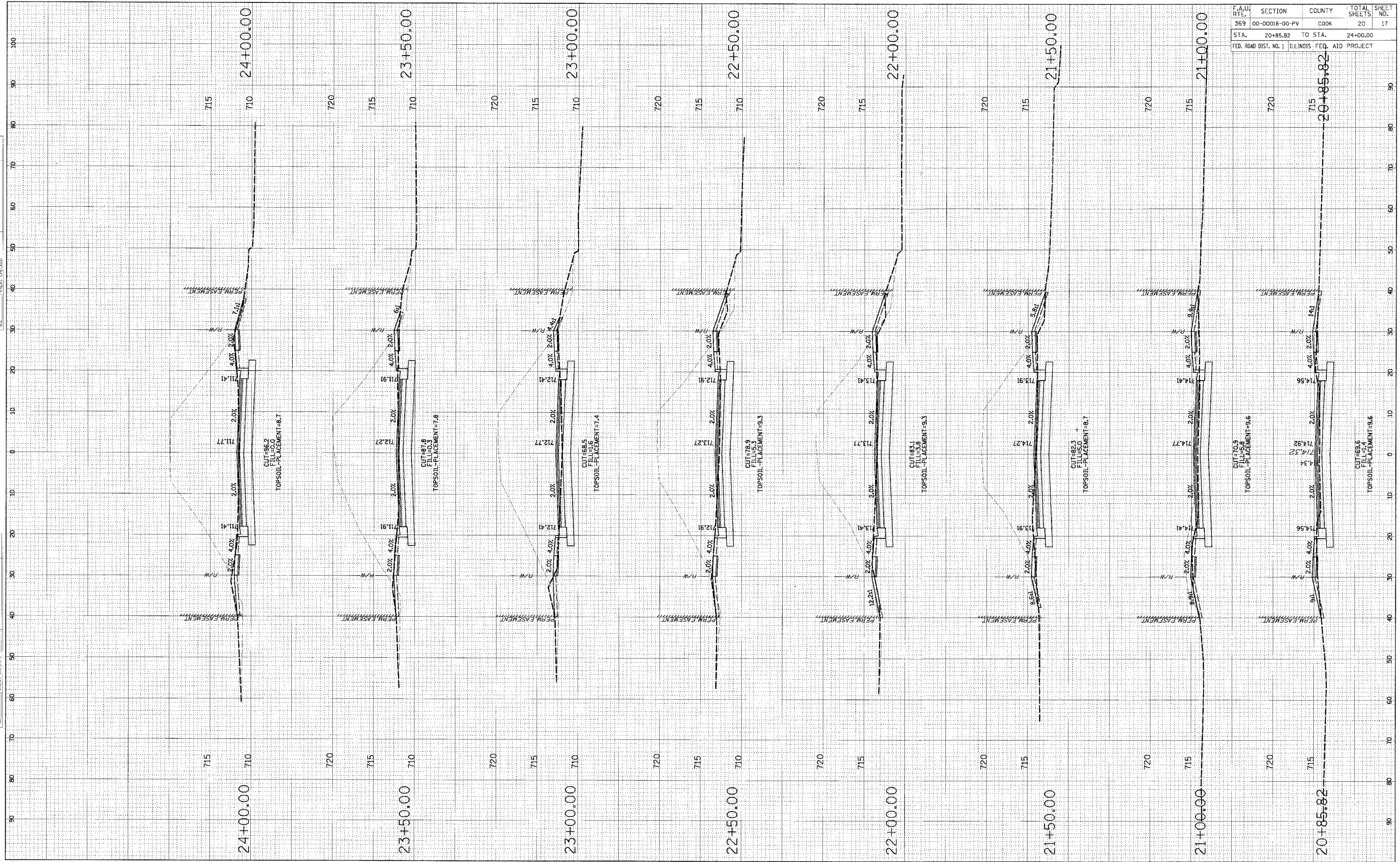
ILLINOIS DEPARTMENT OF TRANSPORTATION
TRAFFIC CONTROL AND PROTECTION
FOR
SIDE ROADS, INTERSECTIONS, AND
DRIVEWAYS

SCALE:
DATE: 2/15/2006

DRAWN BY
CHECKED BY

PLOT DATE: 2/15/2006
FILE NAME: W:\projects\83897\83897.plt
PLOT SCALE: 1/8"=1'-0"
USER NAME: gspencer

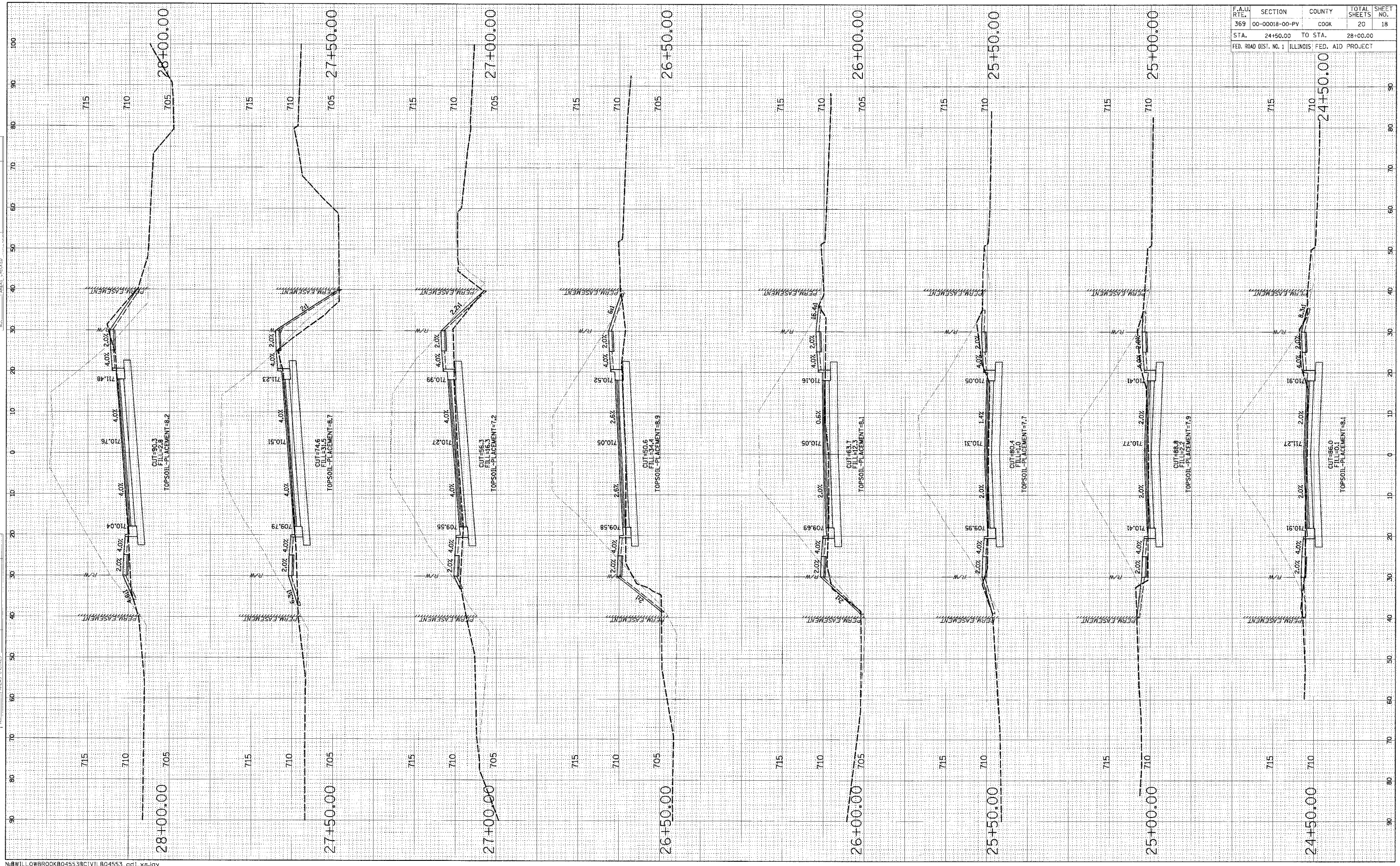
F.A.U. RTE.	SECTION	COUNTY	TOTAL SHEETS	SHEET NO.
369	00-00018-00-PV	COOK	20	17
STA. 20+85.82 TO STA. 24+00.00		FED. ROAD DIST. NO. 1 ILLINOIS FED. AID PROJECT		



DATE: _____ BY: _____
 ORIGINAL SURVEY PLOTTED SURVEY NOTE BOOK AREAS CHECKED NO. _____
 FINAL SURVEY PLOTTED SURVEY NOTE BOOK AREAS CHECKED NO. _____

DATE: _____ BY: _____
 ORIGINAL SURVEY PLOTTED SURVEY NOTE BOOK AREAS CHECKED NO. _____
 FINAL SURVEY PLOTTED SURVEY NOTE BOOK AREAS CHECKED NO. _____

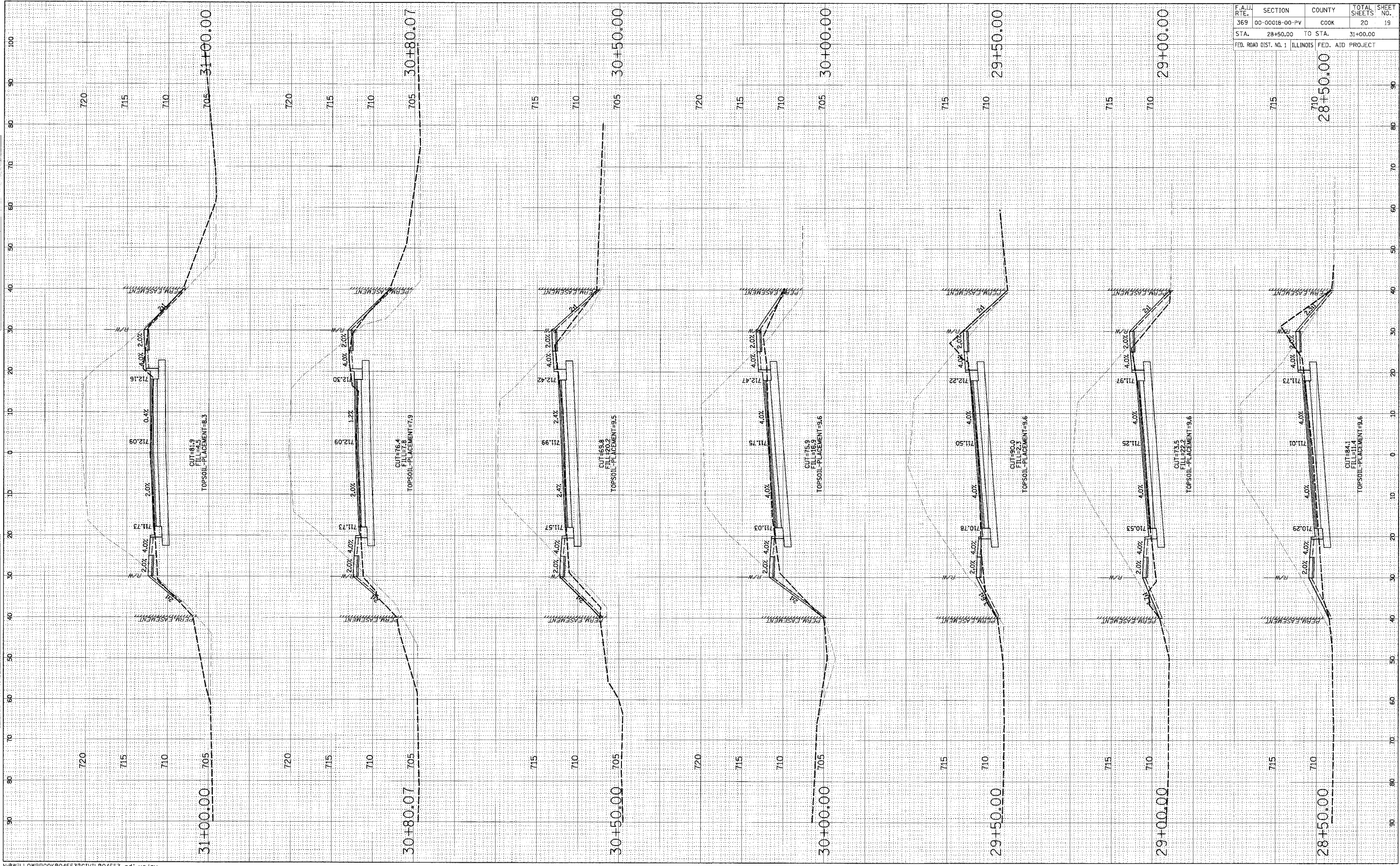
F.A.U. RTE.	SECTION	COUNTY	TOTAL SHEETS	SHEET NO.
369	00-00018-00-PV	COOK	20	18
STA. 24+50.00		TO STA. 28+00.00		
FED. ROAD DIST. NO. 1 ILLINOIS FED. AID PROJECT				



FINAL SURVEY PLOTTED NOTE BOOK AREAS CHECKED

ORIGINAL SURVEY PLOTTED NOTE BOOK AREAS CHECKED

F.A.U. RTE.	SECTION	COUNTY	TOTAL SHEETS	SHEET NO.
369	00-00018-00-PV	COOK	20	19
STA.	28+50.00	TO STA.	31+00.00	
FED. ROAD DIST. NO. 1 ILLINOIS FED. AID PROJECT				



FINAL SURVEY	DATE	BY
SURVEYED TO		
NOTE BOOK		
AREAS CHECKED		
NO.		

ORIGINAL SURVEY	DATE	BY
SURVEYED TO		
NOTE BOOK		
AREAS CHECKED		
NO.		

F.A.U. RTE.	SECTION	COUNTY	TOTAL SHEET NO.
369	00-00018-00-PV	COOK	20
STA.	31+50.00	TO STA.	32+50.00
FED. ROAD DIST. NO. 1 ILLINOIS		FED. AID PROJECT	

FINAL SURVEY
 SURVEYED _____
 FIELD _____
 NOTE BOOK _____
 TAMP DAT _____
 AREAS CHECKED _____
 NO. _____

ORIGINAL SURVEY
 SURVEYED _____
 FIELD _____
 NOTE BOOK _____
 TAMP DAT _____
 AREAS CHECKED _____
 NO. _____

