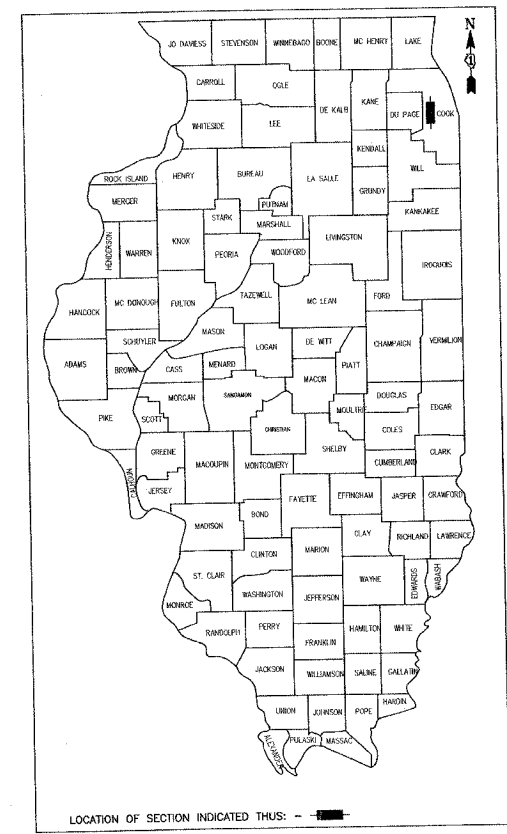


F.A.P. RTE.	SECTION	COUNTY	TOTAL SHEETS	SHEET NO.
	07-00087-00-RS	COOK	10	1
FED. ROAD DIST. NO. 1 ILLINOIS		HIGH PRIORITY PROJECT		
CONTRACT NO. 83915				

STATE OF ILLINOIS DEPARTMENT OF TRANSPORTATION DIVISION OF HIGHWAYS PLANS FOR PROPOSED FEDERAL AID HIGHWAY

**KEYSTONE AVENUE FROM CHICAGO AVENUE TO DIVISION STREET
AUGUSTA STREET FROM THATCHER AVENUE TO KEYSTONE AVENUE**

**SECTION NO. 07-00087-00-RS
PROJECT NO. HPP-4065(002)
JOB NO. C-91-158-07
VILLAGE OF RIVER FOREST, COOK COUNTY**



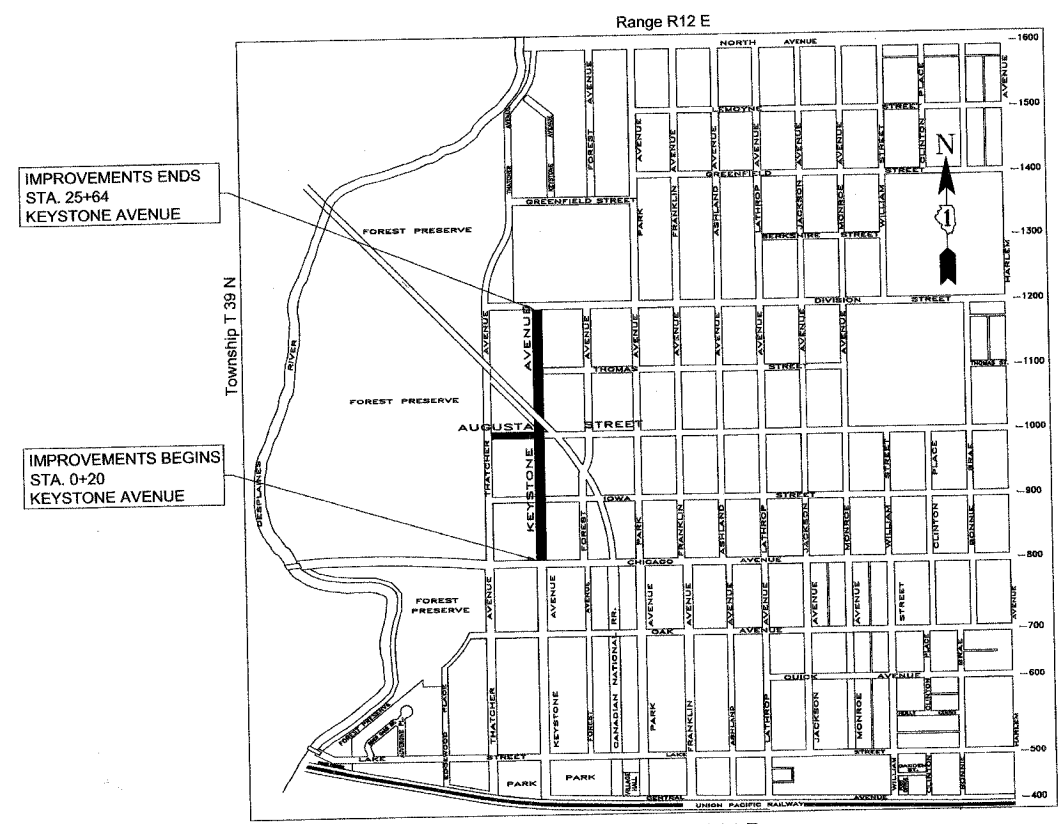
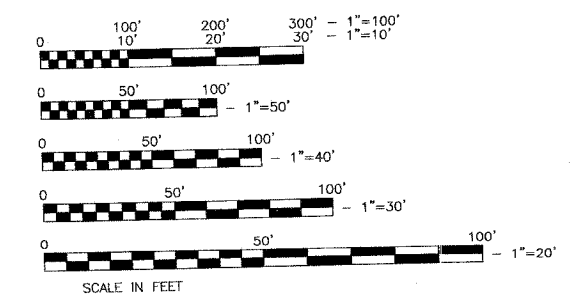
- INDEX OF SHEETS**
- 1 COVER SHEET
 - 2 LEGEND, SUMMARY OF QUANTITIES AND GENERAL NOTES
 - 3 TYPICAL SECTIONS
 - 4-7 PLAN SHEETS
 - 8 PAVEMENT MARKING PLAN
 - 9 STANDARDS AND DETAILS
 - 10 PAVEMENT PATCHING FOR HMA SURFACED PAVEMENT

- HIGHWAY STANDARDS**
- 000001-05 STANDARD SYMBOLS ABBREVIATIONS AND PATTERNS
 - 424001-05 CURB RAMPS FOR SIDEWALKS
 - 442201-03 CLASS C AND D PATCHES
 - 602301-01 INLET TYPE A
 - 604001-02 FRAME AND LIDS TYPE 1
 - 606001-03 CONCRETE CURB TYPE B AND COMBINATION CONCRETE CURB AND GUTTER
 - 701501-04 URBAN LANE CLOSURE 2L, 2W UNDIVIDED
 - 701701-05 URBAN LANE CLOSURE MULTILANE INTERSECTION
 - 701801-03 LANE CLOSURE MULTILANE 1W OR 2W CROSSWALK OR SIDEWALK CLOSURE
 - 701901 TRAFFIC CONTROL DEVICES
 - 780001-01 TYPICAL PAVEMENT MARKINGS
 - B.L.R. 17-3 TRAFFIC CONTROL DEVICES DAY LABOR CONSTRUCTION
 - B.L.R. 22-5 TRAFFIC CONTROL DEVICES CONSTRUCTION ON RURAL OR LOCAL HIGHWAYS

TRAFFIC DATA
KEYSTONE AVENUE
ADT = 2318
DESIGN DESIGNATION: LOCAL STREET

AUGUSTA STREET
ADT = 493
DESIGN DESIGNATION: LOCAL STREET

POSTED SPEED
25 M.P.H.



IMPROVEMENTS ENDS
STA. 25+64
KEYSTONE AVENUE

IMPROVEMENTS BEGINS
STA. 0+20
KEYSTONE AVENUE

LOCATION MAP
N.T.S.

LENGTH OF IMPROVEMENTS
GROSS PROJECT LENGTH (KEYSTONE AVENUE) = 2544 FEET = 0.48 MILES
NET PROJECT LENGTH (KEYSTONE AVENUE) = 2520 FEET
GROSS AND NET PROJECT LENGTH (AUGUSTA STREET) = 500 FEET = 0.095 MILES

GREGORY W. KRAMER
ILLINOIS REGISTERED PROFESSIONAL ENGINEER
NO. 062-040597 EXPIRATION DATE: 11/30/09

**STATE OF ILLINOIS
DEPARTMENT OF TRANSPORTATION
DIVISION OF HIGHWAYS**

APPROVED APRIL 10 20 08
Gregory W. Kramer
DIRECTOR OF PUBLIC WORKS, VILLAGE OF RIVER FOREST

PASSED APRIL 14 20 08
Christina Holt
REGION ONE ENGINEER OF LOCALS ROADS & STREETS

RELEASING FOR BID BASED ON LIMITED REVIEW APRIL 14 20 08
Diane M. O'Keefe
DEPUTY DIRECTOR OF HIGHWAYS, REGION ONE ENGINEER

PRINTED BY AUTHORITY OF THE STATE OF ILLINOIS

VILLAGE OF RIVER FOREST
ENGINEERING DEPARTMENT
400 PARK AVE.
RIVER FOREST, IL 60305
(630) 366-8500 FAX (630) 366-3702

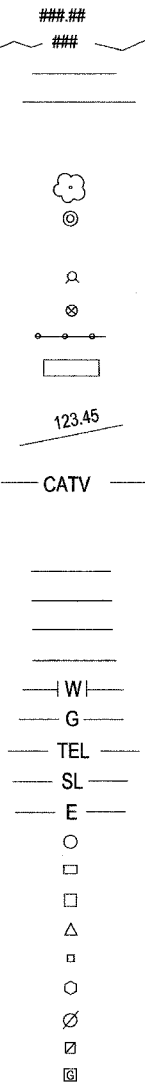
FIELD ENGINEER: MARLIN SOLOMON (847) 705-4407

SUMMARY OF QUANTITIES - CONSTRUCTION TYPE CODE I000
30% FEDERAL, 20% VILLAGE

CODE NO	ITEM	UNIT	TOTAL QUANTITY
20800150	TRENCH BACKFILL	CU YD	1.5
21101610	TOPSOIL FURNISH AND PLACE, 3"	SQ YD	65
25200110	SODDING, SALT TOLERANT	SQ YD	65
25200200	SUPPLEMENTAL WATERING	UNIT	14
31101000	SUB-BASE GRANULAR MATERIAL, TYPE B	TON	28
40600100	BITUMINOUS MATERIALS (PRIME COAT)	GAL	960
40600625	LEVELING BINDER (MACHINE METHOD), N50	TON	411
40603310	HOT-MIX ASPHALT SURFACE COURSE, MIX "C", N50	TON	822
42400200	PORTLAND CEMENT CONCRETE SIDEWALK 5 INCH	SQ FT	250
42400800	DETECTABLE WARNINGS	SQ FT	24
44000158	HOT-MIX ASPHALT SURFACE REMOVAL, 2 1/4"	SQ YD	9530
44000500	COMBINATION CURB AND GUTTER REMOVAL	FOOT	145
44000600	SIDEWALK REMOVAL	SQ FT	250
550A0030	STORM SEWERS, CLASS A, TYPE 1 8"	FOOT	3
60234500	INLETS, TYPE A, TYPE 1 FRAME, OPEN LID (24" DEPTH)	EACH	1
60300310	FRAMES AND LIDS TO BE ADJUSTED (SPECIAL)	EACH	15
60406000	FRAMES AND LIDS, TYPE 1, OPEN LID	EACH	1
60406100	FRAMES AND LIDS, TYPE 1, CLOSED LID	EACH	1
60500060	REMOVING INLETS	EACH	1
60604100	COMBINATION CONCRETE CURB AND GUTTER, TYPE B-6.12 (MODIFIED)	FOOT	145
67100100	MOBILIZATION	L SUM	1
70102620	TRAFFIC CONTROL AND PROTECTION, STANDARD 701501	L SUM	1
70102635	TRAFFIC CONTROL AND PROTECTION, STANDARD 701701	L SUM	1
70102640	TRAFFIC CONTROL AND PROTECTION, STANDARD 701801	L SUM	1
*78000100	THERMOPLASTIC PAVEMENT MARKING - LETTERS AND SYMBOLS	SQ FT	14.4
*78000200	THERMOPLASTIC PAVEMENT MARKING - LINE 4"	FOOT	320
*78000600	THERMOPLASTIC PAVEMENT MARKING - LINE 12"	FOOT	118
*78000610	THERMOPLASTIC PAVEMENT MARKING - LINE 16"	FOOT	88
XX006392	CLASS D PATCHES, 6" (SPECIAL)	SQ YD	425
Z0019600	DUST CONTROL WATERING	UNIT	10
Z0062000	SAWCUTTING	FOOT	145

* INDICATES SPECIALITY ITEMS

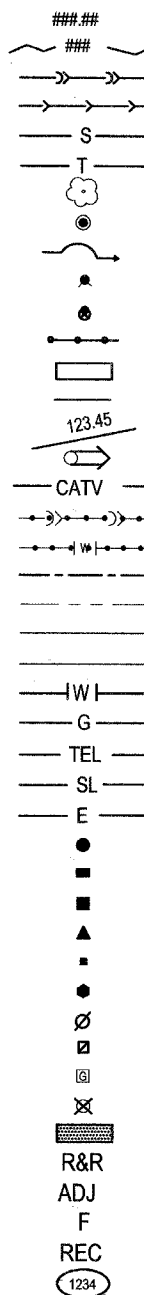
EXISTING



LEGEND

SPOT ELEVATION CONTOUR
COMBINED SEWER
STORM SEWER
SILT FENCE
TREE FENCE
TREE
MANHOLE
DRAINAGE FLOW
FIRE HYDRANT
BUFFALO BOX
FENCE
BUILDING
FLOW DIRECTION
SPOT GRADE
DOWN SPOUT
CABLE T.V.
ABANDON EXISTING SEWER (PLUG)
ABANDON EXISTING WATER
CENTER LINE
R.O.W. LINE
LEFT E.O.P.
RIGHT E.O.P.
WATER MAIN
GAS MAIN
TELEPHONE CABLE
STREET LIGHT CABLE
COMMONWEALTH EDDISON LINE
CATCH BASIN
INLET
VALVE VAULT
DOMESTIC WATER SERVICE
VALVE BOX
STREET LIGHT POLE
ELECTRIC POLE
ELECTRIC HAND HOLE
GAS BOX
STRUCTURES TO BE REMOVED
CONC. REMOVAL & REPLACEMENT
REMOVAL & REPLACE STRUCTURE
ADJUST FRAME
FILL STRUCTURES
RECONSTRUCT
HOUSE ADDRESS

PROPOSED

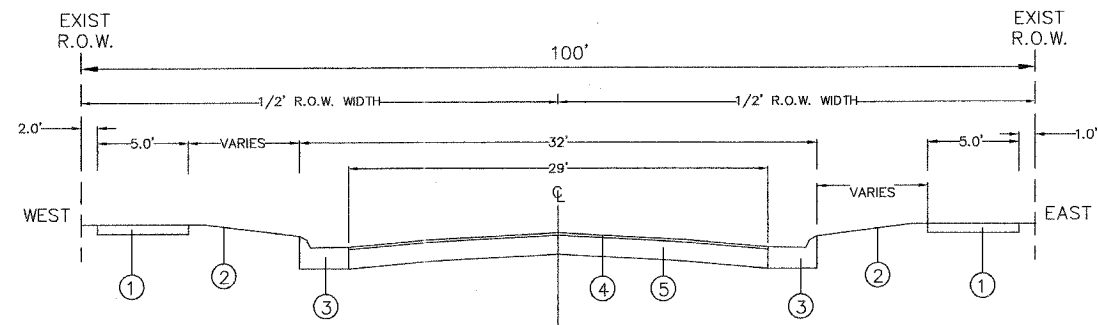


Plan Notes

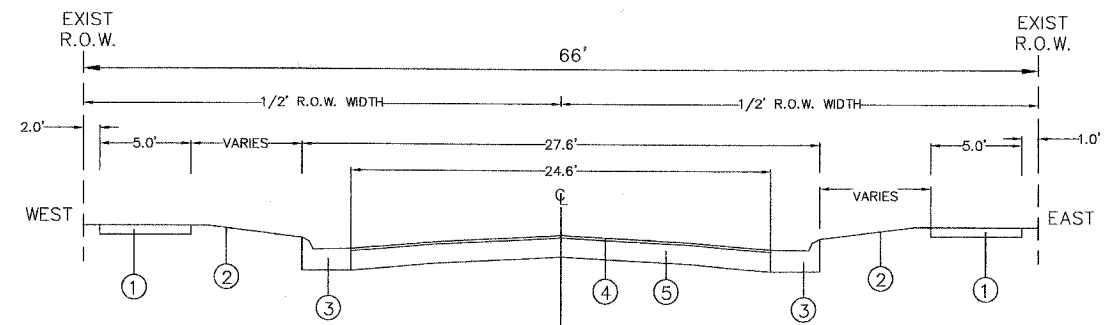
- Pipe Connection to Manholes** - A structural grade concrete or grout with minimum 28 day compressive strength of 3,000 psi shall be used. Existing reinforcement shall be bent into new concrete. The surface of the exposed concrete shall be sound, free from loose debris, brushed and coated with suitable bonding compound.
- Top of Curb Elevations** - Before setting the top of curb elevations, the engineer shall check the existing elevations at the adjacent property line, and if necessary, the Contractor is required to vary the curb exposure and/or gutter elevations in order to more closely follow the proper line grades. The proposed curb exposure shall vary in height from 6 inches (MAX.) to 4 inches (MIN.)
- Earth Excavations** - Except as noted in the special provisions, earth excavation which is necessary for the construction of proposed combination concrete curb and gutter, driveway pavement, sidewalk, street return radius and alley return adjustments shall be considered incidental to their respective pay items of removal and no additional compensation will be paid.
- Street Returns** - A 20 feet radius shall be used on all intersecting street returns unless indicated otherwise.
- Existing Utilities** - Contractor must notify companies for locations prior to commencement of work. Existing utilities shall be maintained in service at all times. Utilities and obstructions shown on the plans were derived from the best possible information through contacts made with various utilities and agencies known to have structures in the area. The location, material and dimensions of existing obstructions are based upon available records, and are shown on the plans and profile strictly as an aid to the Contractor, but must not be construed as being accurate, correct or complete. All structures above and below ground that are encountered during construction shall be properly supported and maintained. The Contractor shall make all arrangements with the Owner of such structures for shifting, support, temporary relocation and for protection where necessary. If damaged during construction, the Contractor shall make or pay to have made all repairs to the structure to the satisfaction of the Owner of the structure. No extra payment shall be made for such interferences or obstructions.
- Utility locations:** The Contractor shall contact Julie (800) 892-0123, and the Village of River Forest Department of Public Works (708) 366-8500 for utility locations prior to commencing construction. A joint July locate meeting is required. The Contractor shall notify all utility companies prior to construction to verify in the field all existing utilities and shall be responsible for protection of same. Contractor must exercise caution while working around existing utilities and existing trees in the area.
- Access/Resident Control:** The Contractor shall not close any street or private driveway without consent of the Engineer, and the proper notification of the affected resident(s) in the event the Engineer deems it necessary to close any driveways or streets, the Engineer shall make the necessary arrangements with the property owners, Police Department (708) 366-7125, and Fire Department (708) 366-7629.
- Use of fire hydrant:** No fire hydrant shall be used to obtain water unless a hydrant use permit is obtained. Permit application can be obtained at the Village of River Forest, Department of Public Works, 400 Park Avenue, River Forest, Illinois 60305 (708-366-8500).
- Notification of Work:** The Contractor shall notify the Village of River Forest at least 48 hours prior to initial start of operations, and also prior to any temporary cessation and resumption of operations, and 24 hours prior to each inspection at (708-366-8500).
- Service connections for existing utilities (gas, water and sanitary sewer)** are not shown on the drawings. Contractor shall assume service connections cross street opposite from utility location indicated on drawings and shall take care not to disturb them.
- Utility service (i.e., combined sewer, storm sewer, water main, gas, telephone, electric cable TV)** are generally shown on the drawings but may not be complete. Contractor shall maintain all utility services and repair any damage resulting from construction operations.

F.A.P. RTE.	SECTION	COUNTY	TOTAL SHEETS	SHEET NO.
07-00087-00-RS		COOK	10	3
FED. ROAD DIST. NO. 1	ILLINOIS	HIGH PRIORITY PROJECT		

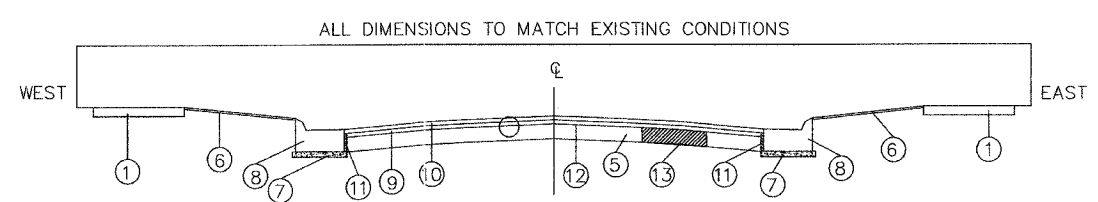
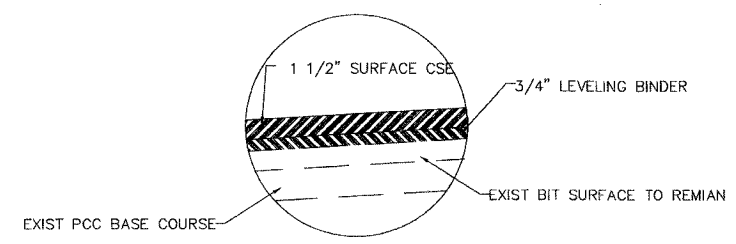
CONTRACT NO. 83915



**KEYSTONE AVENUE
EXISTING TYPICAL SECTION**
STA: 0+20 TO STA 25+64

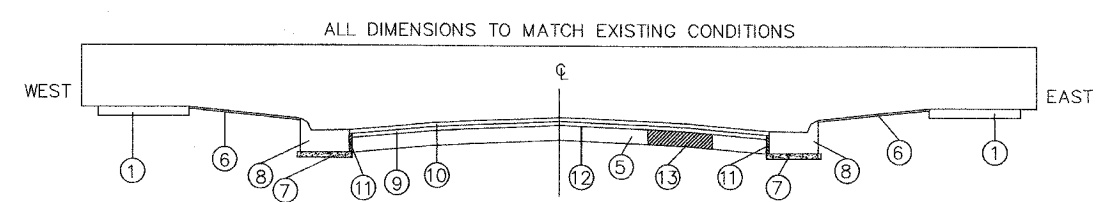


**AUGUSTA STREET
EXISTING TYPICAL SECTION**
STA: 0+00 TO STA 5+00



**KEYSTONE AVENUE
PROPOSED TYPICAL SECTION**
STA: 0+20 TO STA 25+64

NOT TO SCALE



**AUGUSTA STREET
PROPOSED TYPICAL SECTION**
STA: 0+00 TO STA 5+00

NOT TO SCALE

LEGEND

- EXISTING P.C.C. SIDEWALK
- EXISTING PARKWAY
- EXISTING COMBINATION CONCRETE CURB AND GUTTER B-6.12
- EXISTING HOT MIX ASPHALT SURFACE COURSE VARIABLE THICKNESS. REMOVE SURFACE 2.25 INCHES
- EXISTING PCC BASE COURSE
- PROPOSED TOPSOIL PLACEMENT AND SODDING AT LOCATIONS C&G REPLACEMENT
- PROPOSED SUB-BASE GRANULAR MATERIAL TYPE B
- PROPOSED COMBINATION CONCRETE CURB AND GUTTER, TYPE B-6.12 AT DESIGNATED LOCATION BY ENGINEER
- PROPOSED LEVELING BINDER, 0.75"
- PROPOSED HOT-MIX ASPHALT SURFACE COURSE, MIX "C", N50, 1.5"
- PROPOSED PCC BASE COURSE 8", WIDTH AS REQUIRED (INCIDENTAL TO COMB. CURB AND GUTTER)
- PROPOSED BITUMINOUS MATERIALS (PRIME COAT)
- PROPOSED CLASS D PATCHES, 8 INCHES (SPECIAL)

HOT MIX ASPHALT MIXTURE REQUIREMENTS

ITEM	AC TYPE	VOIDS
HOT MIX ASPHALT SURFACE COURSE, MIX C, N50, IL-9.5 MM	PG 64-22	4% @ 50 GYR
LEVELING BINDER (mm), N50 (IL-9.5mm)	PG 64-22 *	4% @ 50 GYR
CLASS D PATCHES, 6 INCHES (SPECIAL) BINDER IL-19 MM	PG 64-22 *	4% @ 70 GYR

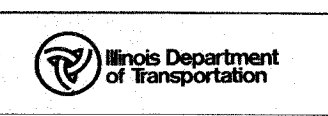
NOTES:
THE UNIT WEIGHT USED TO CALCULATE ALL HOT-MIX ASPHALT (HMA) SURFACE MIXTURE QUANTITIES IS 112 LBS/SQYD/IN.
* WHEN RAP EXCEEDS 20%, THE NEW ASPHALT BINDER IN THE MIX SHALL BE PG 58-22.

REVISIONS			
DATE	BY	DESCRIPTION	

DESIGNED: TJT
DRAFTED: TJT
CHECKED: GWK
APPROVED: GWK DATE: 12/28/08

**VILLAGE OF RIVER FOREST
ENGINEERING DEPARTMENT
400 PARK AVE.
RIVER FOREST, IL 60305
(708) 366-8500**

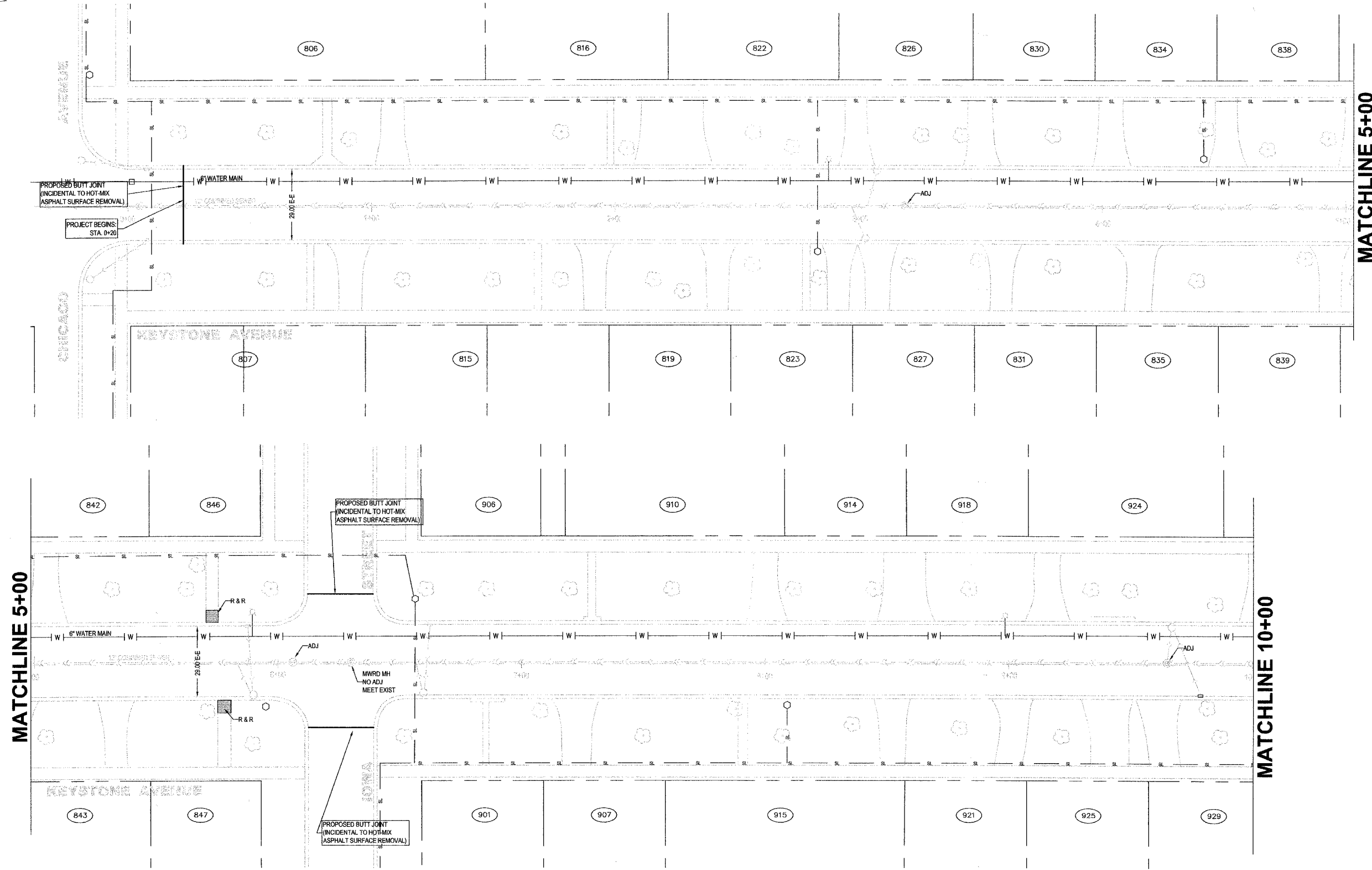
TITLE:
KEYSTONE AVENUE AND AUGUSTA STREET
RESURFACING IMPROVEMENTS
TYPICAL SECTIONS
SECTION NO: 07-00087-00-RS



SCALE: NONE
DATE: 3/12/2008
PROJ. NO: 4065
SHEET: 3 OF 10

F.A.P. RTE.	SECTION	COUNTY	TOTAL SHEETS	SHEET NO.
07-00087-00-RS		COOK	10	4
FED. ROAD DIST. NO. 1	ILLINOIS	HIGH PRIORITY PROJECT		

CONTRACT NO. 83915



MATCHLINE 5+00

MATCHLINE 5+00

MATCHLINE 10+00

REVISIONS							
DATE	BY	DESCRIPTION	DATE	BY	DESCRIPTION	DATE	BY

DESIGNED: TJT
DRAFTED: TJT
CHECKED: GWK
APPROVED: GWK DATE: 12/28/06

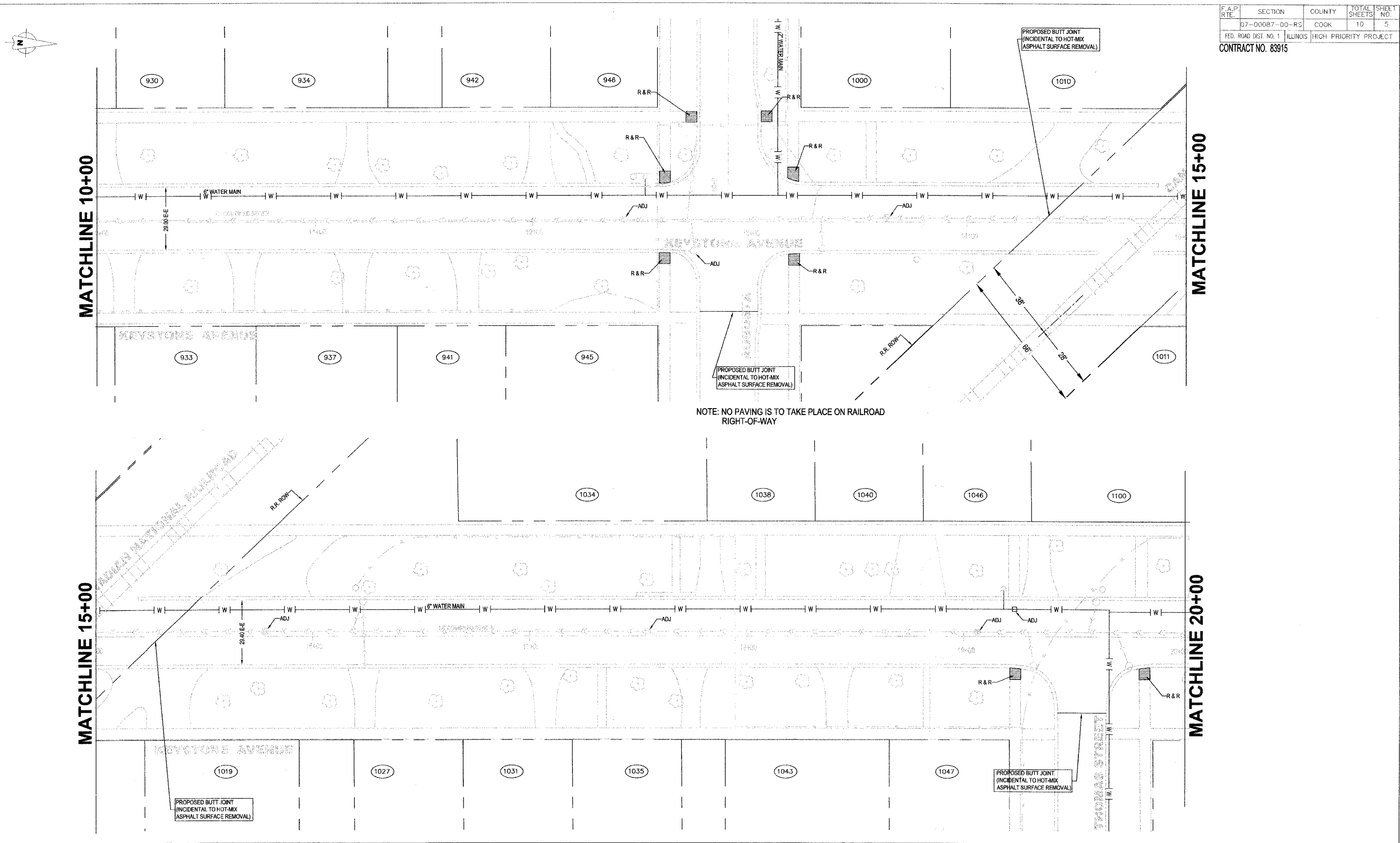


VILLAGE OF RIVER FOREST
ENGINEERING DEPARTMENT
400 PARK AVE.
RIVER FOREST, IL 60305
(708) 366-8500

TITLE:
 KEYSTONE AVENUE AND AUGUSTA STREET
 RESURFACING IMPROVEMENTS
 PLAN
 SECTION NO: 07-00087-00-RS



SCALE: 1"=20'
DATE: 3/12/2008
PROJ. NO: 4065
SHEET: 4 OF 10



F.A.P. R.T.E.	SECTION	COUNTY	TOTAL SHEETS	SHEET NO.
	07-00087-00-RS	COOK	10	5
FED. ROAD DIST. NO. 1		ILLINOIS	HIGH PRIORITY PROJECT	
CONTRACT NO. 83915				

NOTE: NO PAVING IS TO TAKE PLACE ON RAILROAD RIGHT-OF-WAY

REVISIONS					
DATE	BY	DESCRIPTION	DATE	BY	DESCRIPTION

DESIGNED:	TJT
DRAFTED:	TJT
CHECKED:	GWK
APPROVED:	GWK
DATE:	12/28/08

VILLAGE OF RIVER FOREST
ENGINEERING DEPARTMENT
400 PARK AVE.
RIVER FOREST, IL 60305
(708) 366-8500

TITLE:
 KEYSTONE AVENUE AND AUGUSTA STREET
 RESURFACING IMPROVEMENTS
 PLAN
 SECTION NO: 07-00087-00-RS



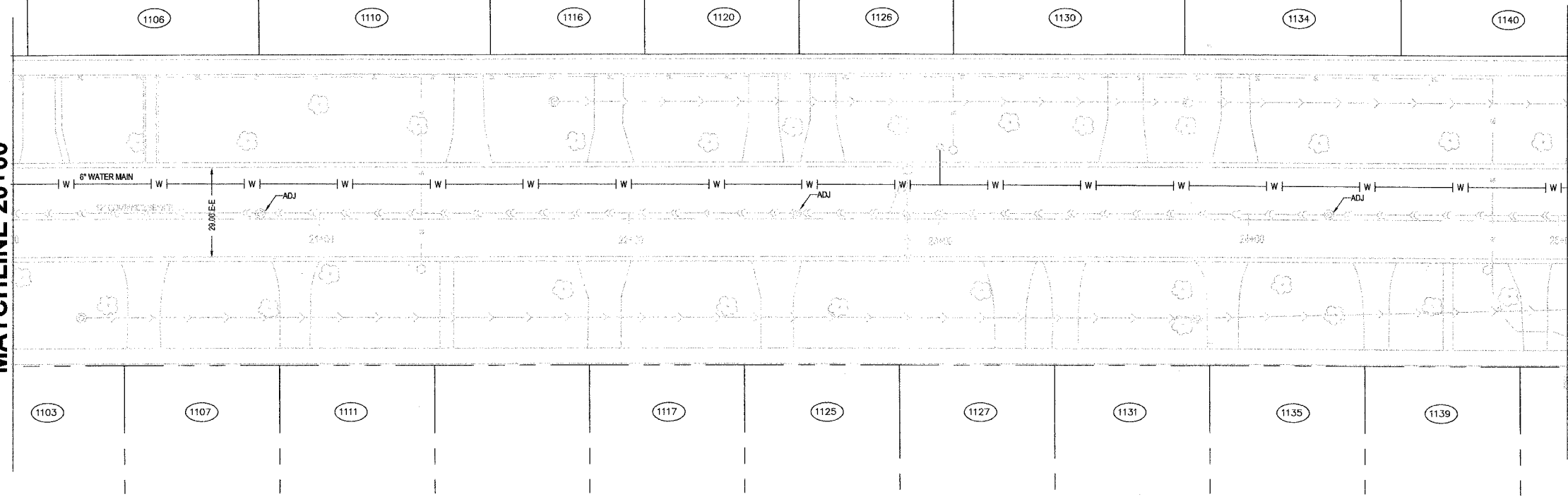
SCALE:	1" = 20'
DATE:	3/12/2008
PROJ. NO:	4065
SHEET:	5 of 10



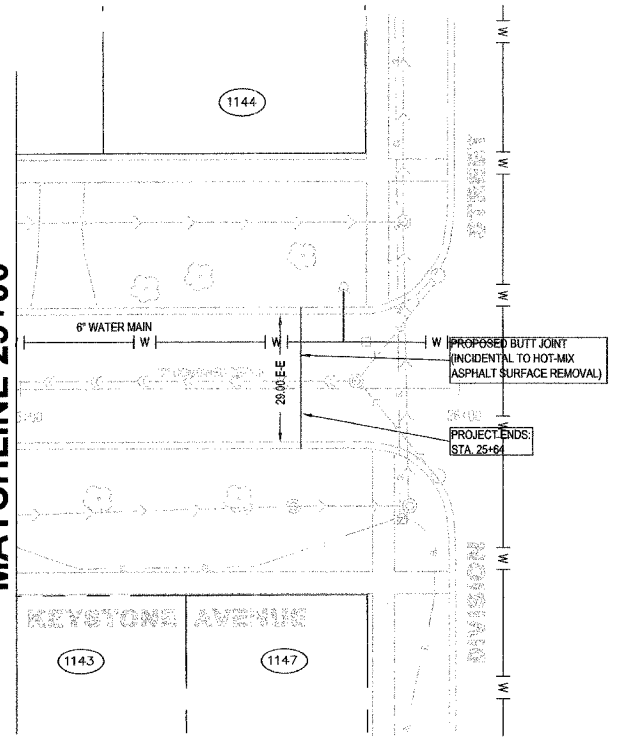
F.A.P. RT#	SECTION	COUNTY	TOTAL SHEETS	SHEET NO.
07-00087-00-RS		COOK	10	6
FED. ROAD DIST. NO. 1 ILLINOIS HIGH PRIORITY PROJECT				
CONTRACT NO. 83915				

MATCHLINE 20+00

MATCHLINE 25+00



MATCHLINE 25+00

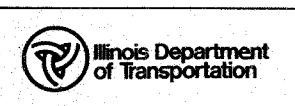


REVISIONS					
DATE	BY	DESCRIPTION	DATE	BY	DESCRIPTION

DESIGNED: TJT
DRAFTED: TJT
CHECKED: GWK
APPROVED: GWK DATE: 1/28/08

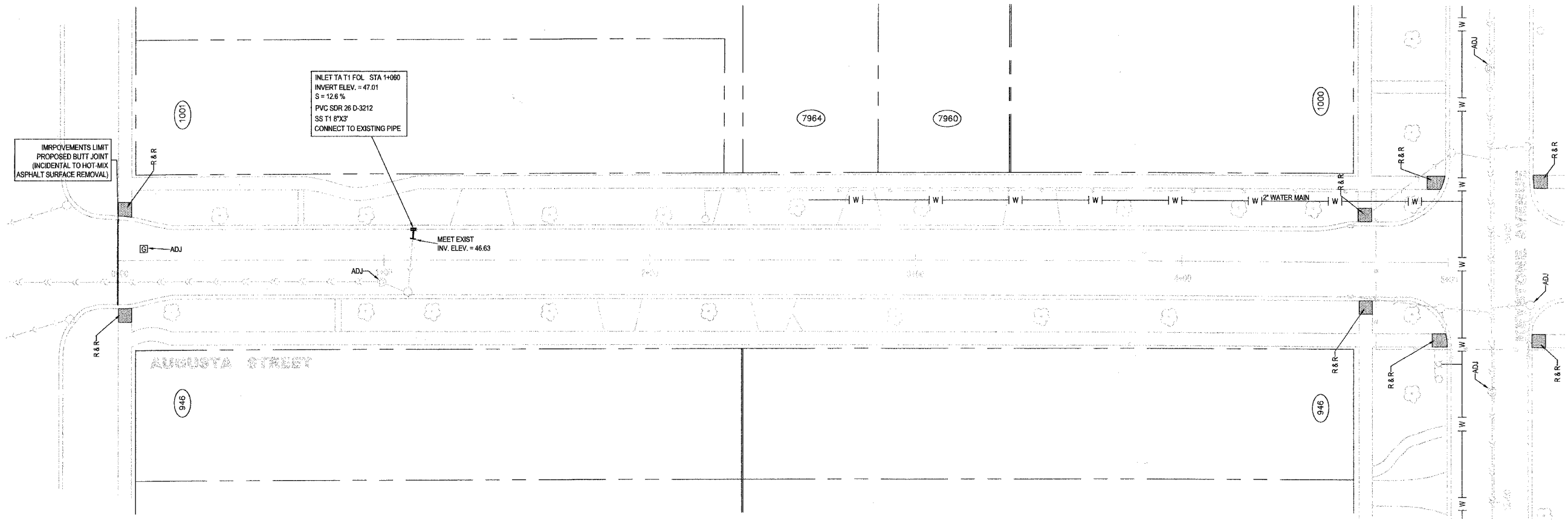
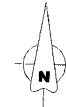
VILLAGE OF RIVER FOREST
ENGINEERING DEPARTMENT
 400 PARK AVE.
 RIVER FOREST, IL 60305
 (708) 366-8500

TITLE:
 KEYSTONE AVENUE AND AUGUSTA STREET
 RESURFACING IMPROVEMENTS
 PLAN
 SECTION NO: 07-00087-00-RS



SCALE: 1"=20'
DATE: 3/12/2008
PROJ. NO: 4065
SHEET: 6 OF 10

F.A.P. RTE.	SECTION	COUNTY	TOTAL SHEETS	SHEET NO.
07-00087-00-RS		COOK	10	7
FED. ROAD DIST. NO. 1		ILLINOIS HIGH PRIORITY PROJECT		
CONTRACT NO. 83915				



REVISIONS					
DATE	BY	DESCRIPTION	DATE	BY	DESCRIPTION

DESIGNED:	TJT
DRAFTED:	TJT
CHECKED:	GWK
APPROVED:	GWK
DATE:	12/28/06

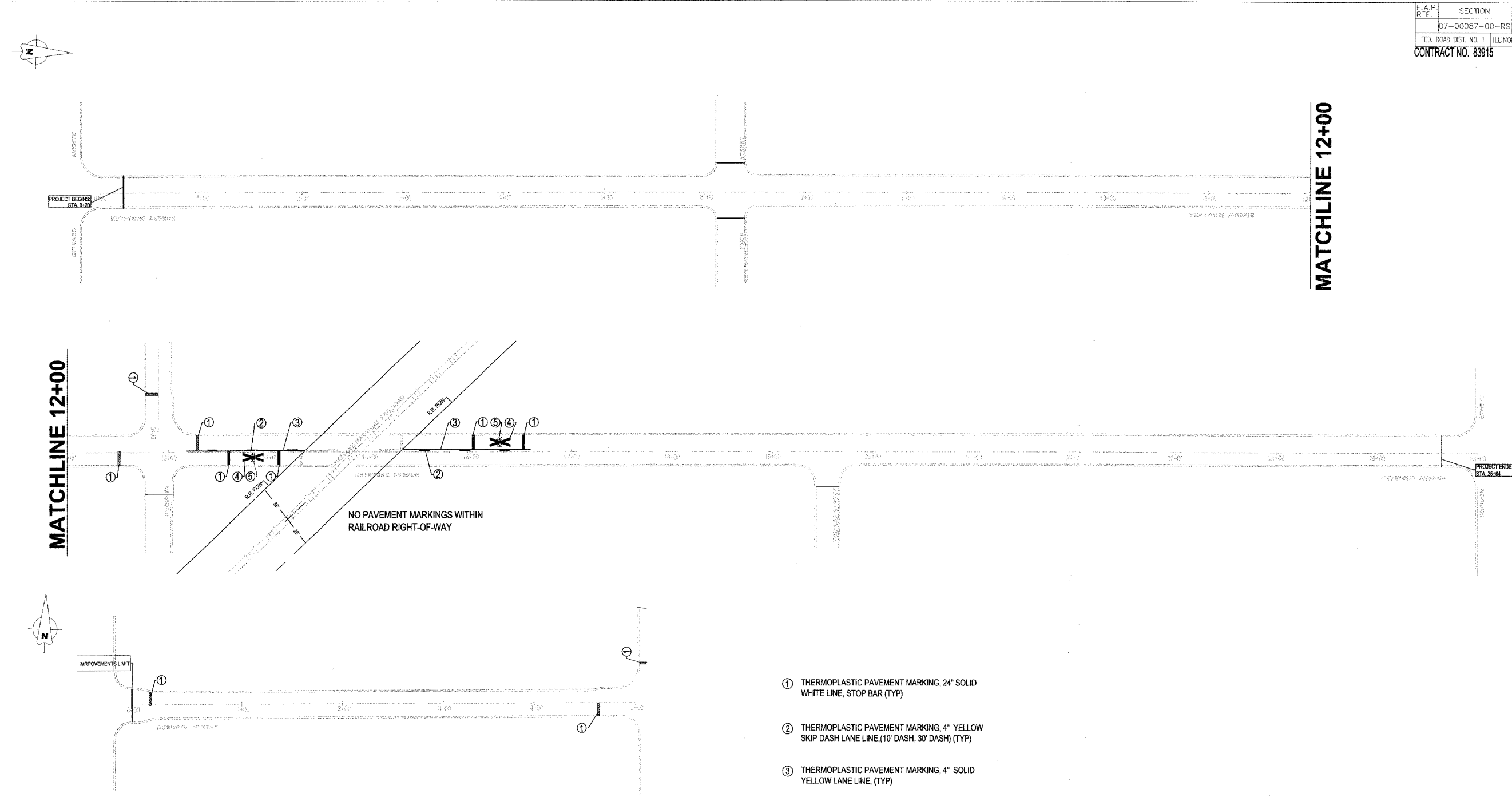
**VILLAGE OF RIVER FOREST
ENGINEERING DEPARTMENT**
400 PARK AVE.
RIVER FOREST, IL 60305
(708) 366-8500

TITLE:
KEYSTONE AVENUE AND AUGUSTA STREET
RESURFACING IMPROVEMENTS
PLAN
SECTION NO: 07-00087-00-RS

**Illinois Department
of Transportation**

SCALE:	1" = 20'
DATE:	3/12/2008
PROJ. NO.:	4065
SHEET:	7 OF 10

F.A.P. R.T.E.	SECTION	COUNTY	TOTAL SHEETS	SHEET NO.
	D7-00087-00-RS	COOK	10	8
FED. ROAD DIST. NO. 1		ILLINOIS	HIGH PRIORITY PROJECT	
CONTRACT NO. 83915				



NO PAVEMENT MARKINGS WITHIN RAILROAD RIGHT-OF-WAY

- ① THERMOPLASTIC PAVEMENT MARKING, 24" SOLID WHITE LINE, STOP BAR (TYP)
- ② THERMOPLASTIC PAVEMENT MARKING, 4" YELLOW SKIP DASH LANE LINE, (10' DASH, 30' DASH) (TYP)
- ③ THERMOPLASTIC PAVEMENT MARKING, 4" SOLID YELLOW LANE LINE, (TYP)
- ④ THERMOPLASTIC PAVEMENT MARKING, 16" SOLID WHITE, RAILROAD GRADE CROSSING
- ⑤ THERMOPLASTIC LETTERS, WHITE RAILROAD GRADE CROSSING RR

REVISIONS					
DATE	BY	DESCRIPTION	DATE	BY	DESCRIPTION

DESIGNED: TJT
 DRAFTED: TJT
 CHECKED: GWK
 APPROVED: GWK DATE: 12/28/06



VILLAGE OF RIVER FOREST
ENGINEERING DEPARTMENT
 400 PARK AVE.
 RIVER FOREST, IL 60305
 (708) 366-8500

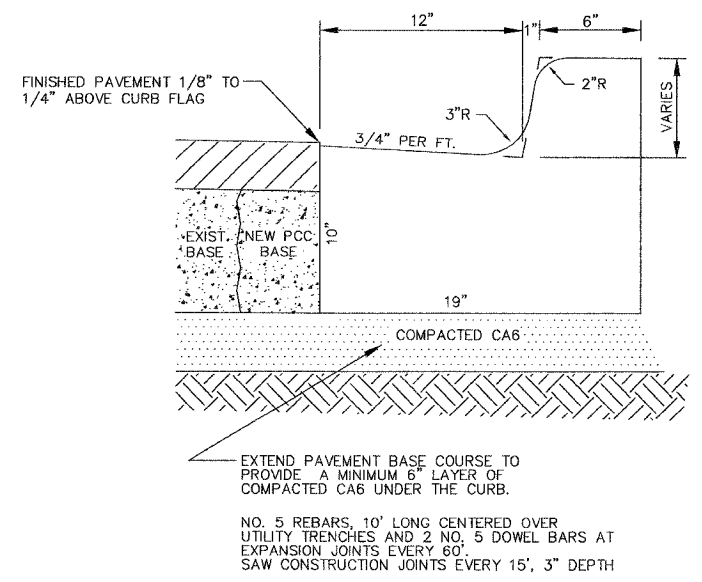
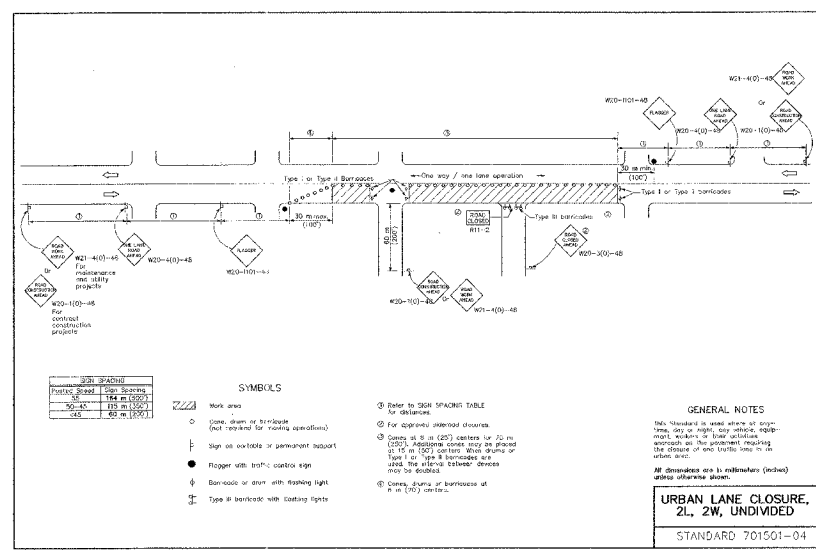
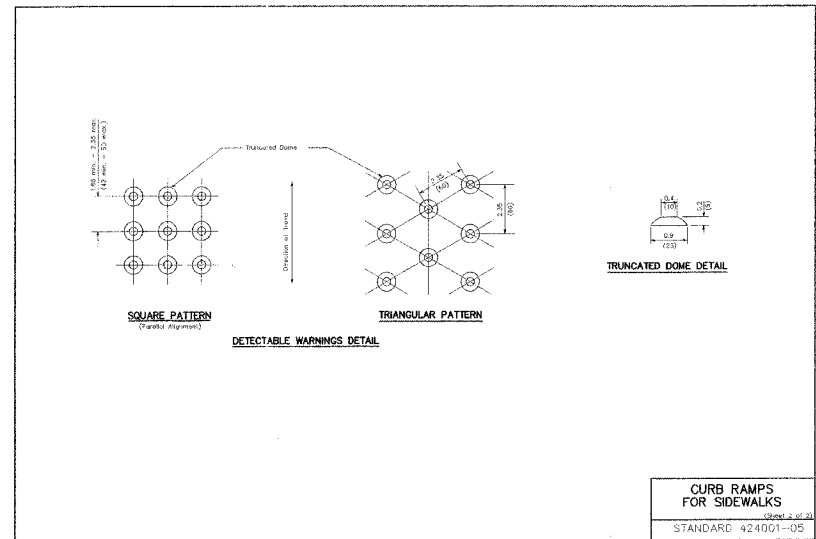
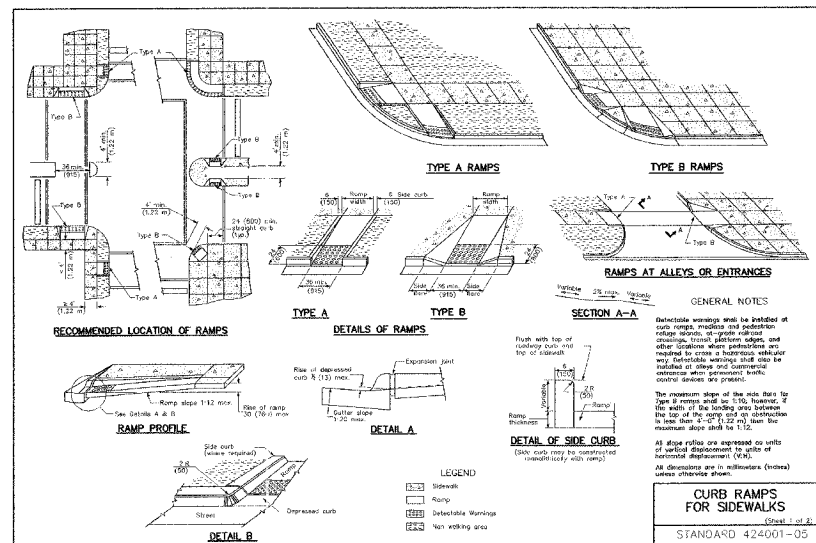
TITLE:
 KEYSTONE AVENUE AND AUGUSTA STREET
 RESURFACING IMPROVEMENTS
 PAVEMENT MARKING PLAN
 SECTION NO: 07-00087-00-RS



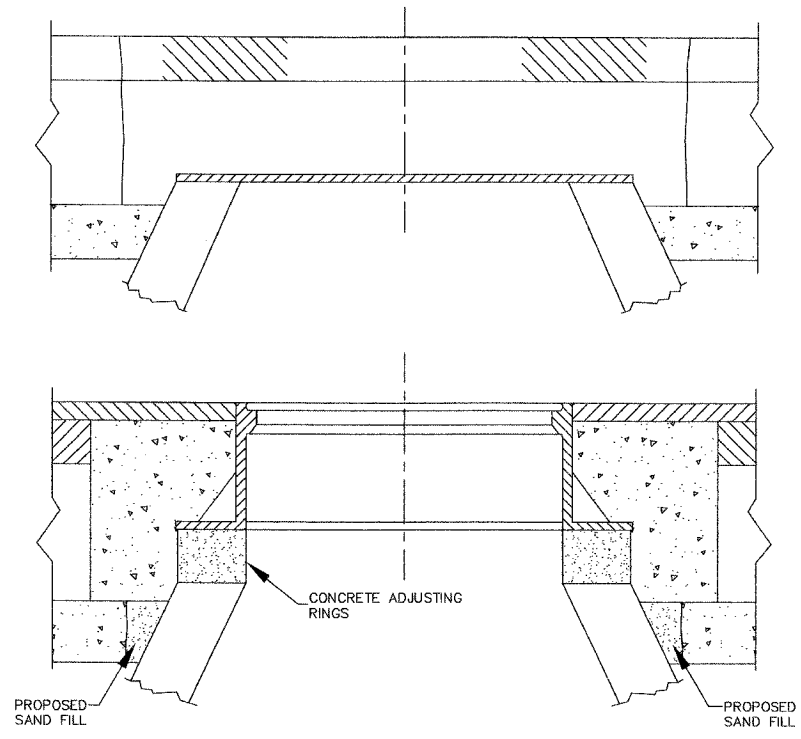
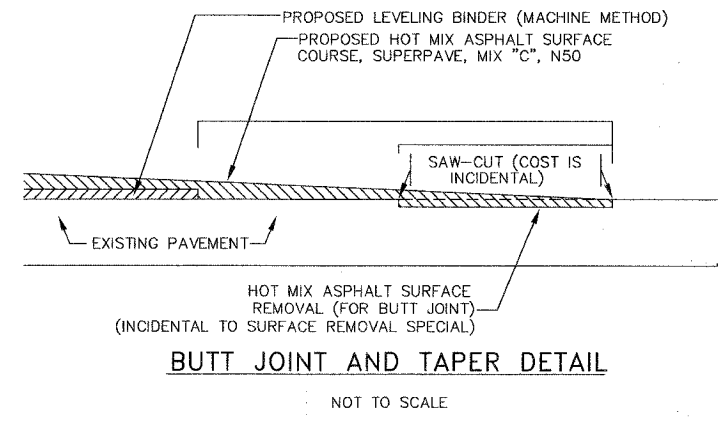
Illinois Department of Transportation

SCALE:	1" = 50'
DATE:	3/12/2008
PROJ. NO.:	4065
SHEET:	8 of 10

F.A.P. RITE.	SECTION	COUNTY	TOTAL SHEETS	SHEET NO.
	07-00087-00-RS	COOK	10	9
FED. ROAD DIST. NO. 1		ILLINOIS	HIGH PRIORITY PROJECT	
CONTRACT NO. 83915				



B6:12 CURB & GUTTER MODIFIED
NOT TO SCALE



CONSTRUCTION PROCEDURES

- STAGE I (BEFORE PAVEMENT MILLING)
- REMOVE A MINIMUM OF 12" OF THE PAVEMENT FROM AROUND THE STRUCTURE.
 - REMOVE THE EXISTING FRAME AND LID FROM THE STRUCTURE.
 - COVER THE STRUCTURE OPENING WITH A 36" DIAMETER METAL PLATE.
 - BACKFILL WITH CRUSHED STONE AND A MINIMUM 1 1/2" THICK BITUMINOUS MATERIAL APPROVED BY THE ENGINEER.
- STAGE II (AFTER PAVEMENT MILLING)
- REMOVE THE BITUMINOUS MATERIAL AND CRUSHED STONE.
 - INSTALL THE FRAME AND LIDS ADJUST THE FRAME TO ITS FINAL SURFACE ELEVATION.
 - THE SURROUNDING SPACE SHALL BE FILLED WITH CLASS SI CONCRETE TO THE ELEVATION OF THE SURFACE OF THE EXISTING BASE COURSE.

THE PROCEDURE EXPLAINED ABOVE SHALL CONFORM TO THE APPLICABLE PORTIONS OF SECTION 353, 406, 602, AND 603 OF THE STANDARD SPECIFICATIONS.

LOCATION OF STRUCTURES

THE CONTRACTOR WILL BE REQUIRED TO KEEP A RECORD OF THE LOCATIONS OF THE BURIED STRUCTURES ACCORDING TO THE STATION AND DISTANCE LEFT OR RIGHT OF THE CENTERLINE OF PAVEMENT. UPON COMPLETION OF THE WORK THE CONTRACTOR WILL DELIVER THE RECORD TO THE ENGINEER.

BASIS OF PAYMENT

FRAMES AND LIDS TO BE ADJUSTED (SPECIAL)

NOTES

- EXISTING BROKEN FRAMES AND LIDS SHALL BE REMOVED AND DISPOSED OF BY THE CONTRACTOR AND SHALL BE REPLACED AS DIRECTED BY THE ENGINEER. REPLACEMENT FRAMES AND LIDS WILL BE PAID FOR IN ACCORDANCE WITH ARTICLE 109.04 OF THE STANDARD SPECIFICATIONS UNLESS A SEPARATE PAY ITEM HAS BEEN PROVIDED.
- IF THE EXISTING LIDS ARE OPEN, THE FRAME WILL BE ADJUSTED TO THE ELEVATION OF THE MILLED PAVEMENT SURFACE PRIOR TO THE MILLING OPERATION. THE FRAME WILL NOT BE REMOVED AND COVERED BY THE METAL PLATE.
- THE METAL PLATE USED TO COVER THE STRUCTURE SHALL REMAIN THE PROPERTY OF THE CONTRACTOR.

FRAMES AND LIDS TO BE ADJUSTED (SPECIAL)

NOT TO SCALE

REVISIONS	DATE	BY	DESCRIPTION	DATE	BY	DESCRIPTION	DATE	BY	DESCRIPTION

DESIGNED: TJT
DRAFTED: TJT
CHECKED: GWK
APPROVED: GWK DATE: 12/28/08

VILLAGE OF RIVER FOREST
ENGINEERING DEPARTMENT
400 PARK AVE.
RIVER FOREST, IL 60305
(708) 366-8500

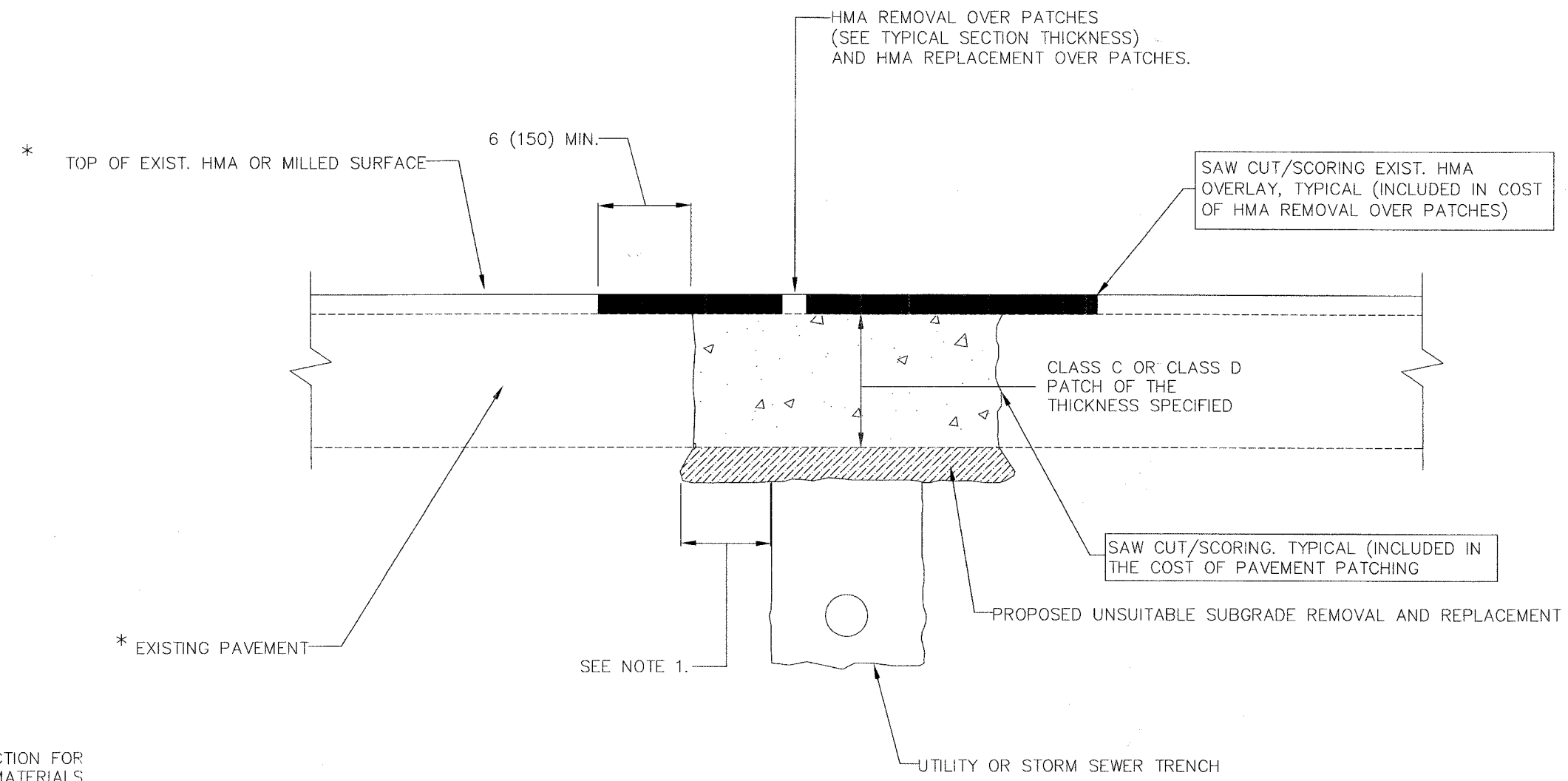
TITLE:
KEYSTONE AVENUE AND AUGUSTA STREET
RESURFACING IMPROVEMENTS
STANDARDS AND DETAILS
SECTION NO: 07-00087-00-RS

Illinois Department of Transportation

SCALE: NONE
DATE: 3/12/2008
PROJ. NO: 4065
SHEET: 9 of 10

F.A.P. RTE.	SECTION	COUNTY	TOTAL SHEETS	SHEET NO.
	07-00087-00-RS	COOK	10	10
FED. ROAD DIST. NO. 1	ILLINOIS	HIGH PRIORITY PROJECT		

CONTRACT NO. 83915



* SEE TYPICAL SECTION FOR THICKNESS AND MATERIALS

NOTES:

1. THE WIDTH OF THE FULL DEPTH PATCH OVER A TRENCH SHALL BE 12 (300) WIDER ON EACH SIDE OF THE TRENCH.
2. FOR METHOD OF MEASUREMENT AND BASIS OF PAVEMENT. SEE RECURRING SPECIAL PROVISIONS "PATCHING WITH HOT-MIX ASPHALT OVERLAY REMOVAL".

SCHEDULE OF CONSTRUCTION

1. REMOVE THE EXISTING HMA MATERIAL OVER THE AREA TO BE PATCHED.
2. REMOVE AND REPLACE FULL PATCHES
3. REPLACE HMA MATERIAL OVER THE AREA TO BE PATCHED.

ILLINOIS DEPARTMENT OF TRANSPORTATION
 PAVEMENT PATCHING FOR
 HMA SURFACED PAVEMENT
 SCALE: VERT: NONE HORIZ: NONE DRAWN BY:
 PLOT DATE: 2/21/2007 CHECKED BY: