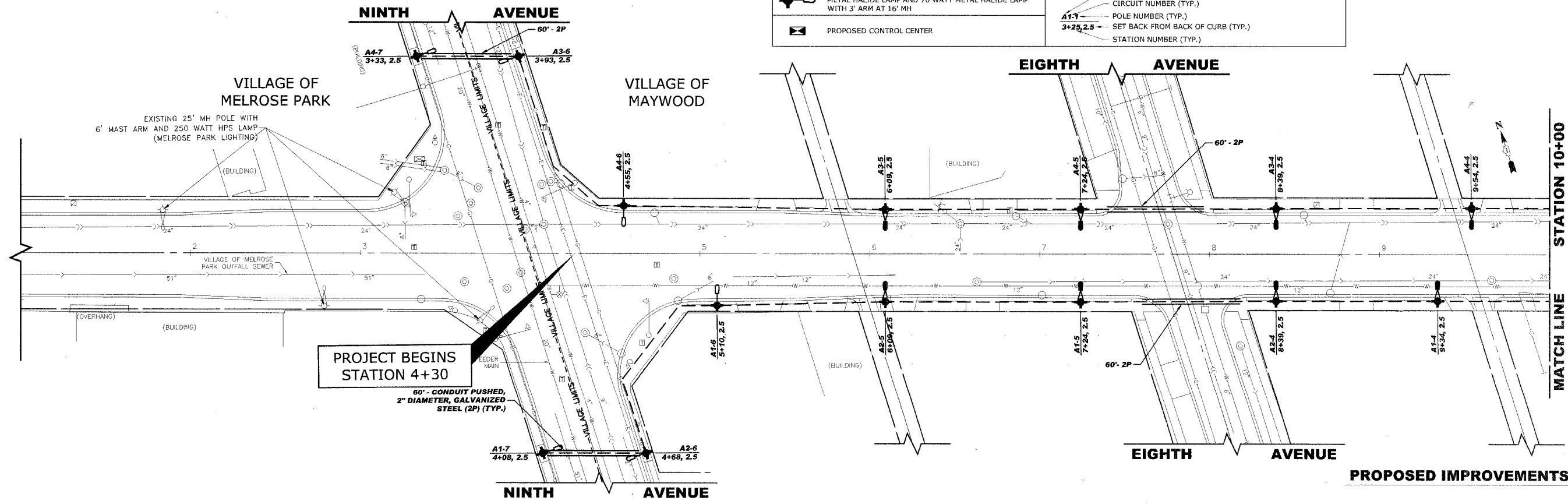


PROJECT BEGINS STATION 4+30

LEGEND OF SYMBOLS	
	EXISTING LIGHT POLE AND FIXTURE
	PROPOSED 30' MH POLE WITH 6' SCROLL ARM & 150 WATT METAL HALIDE LAMP AND 70 WATT METAL HALIDE LAMP WITH 3' ARM AT 16' MH
	PROPOSED 30' MH POLE WITH 6' SCROLL ARM & 175 WATT METAL HALIDE LAMP AND 70 WATT METAL HALIDE LAMP WITH 3' ARM AT 16' MH
	PROPOSED 30' MH POLE WITH 6' SCROLL ARM & 400 WATT METAL HALIDE LAMP AND 70 WATT METAL HALIDE LAMP WITH 3' ARM AT 16' MH
	PROPOSED CONTROL CENTER
	EXISTING OVERHEAD STREET LIGHT WIRING
	PROPOSED UNIT DUCT WITH 3-1/2 No.4 & 1-1/2 No.6 GROUND, 600V (XLP-TYPE USE), 1 1/4" DIAMETER OR AS NOTED, BORED & PULLED OR AS NOTED
	PROPOSED GALVANIZED STEEL CONDUIT IN TRENCH OR PUSHED AS NOTED
	CONTROLLER IDENTIFICATION (TYP.)
	CIRCUIT NUMBER (TYP.)
	POLE NUMBER (TYP.)
	SET BACK FROM BACK OF CURB (TYP.)
	STATION NUMBER (TYP.)



PROJECT BEGINS STATION 4+30

Drawing file: W:\Projects\55508153 - Lake St Streetscape\Lake St Streetscape.dwg Feb 20, 2008 - 4:30pm

	◆ Civil Engineers	9933 Roosevelt Road
	◆ Municipal Consultants	Westchester, Illinois 60154-2780
	◆ Established 1911	Phone: 708/865-0300
		Fax: 708/865-1212

**LAKE STREET STREETSCAPE  
VILLAGE OF MAYWOOD, ILLINOIS**

**LIGHTING PLAN**

SCALE:	1"=30'	SHEET <b>12</b>
DRAWN BY:	LEV ECW	
BOOK NO.:	SDR33/1480/1484/1.S	OF <b>22</b>
DATE:	02/20/2008	
REVISION:	E.H.E. NO.: 565-06-15302	