

**STATE OF ILLINOIS
DEPARTMENT OF TRANSPORTATION
PLANS FOR PROPOSED
LOCAL AGENCY IMPROVEMENT
FEDERAL-AID HBP PROJECT
HIGHWAY BRIDGE PROGRAM
TR 61A
SECTION 06-15118-01-BR/ OGLE COUNTY
SECTION 06-02121-01-BR/ WINNEBAGO COUNTY
PROJECT BHOS-141(64)
JOB NO. C-92-062-07
CONTRACT NO. 85416
2008**

INDEX OF SHEETS

- 1 = COVER SHEET
- 2 = PLAN AND PROFILE
- 3 = GENERAL PLAN AND ELEVATION
- 4 = CAP REPAIR DETAILS FOR PIERS 1,2, & 3
- 5 = BACKWALL REPAIR DETAILS FOR ABUTMENTS

SUMMARY OF QUANTITIES

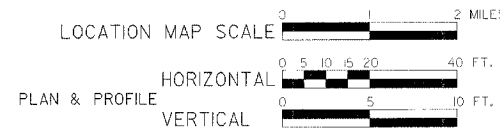
PAY CODE	QUANTITY	UNIT	ITEM
*20200100	5	Cu. Yd.	Earth Excavation
*20700220	3	Cu. Yd.	Porous Granular Embankment
*28100109	156	Sq. Yd.	Stone Riprap, Class A5
40800050	21	Ton	Incidental Hot-Mix Asphalt Surfacing
*44000900	66	Sq. Yd.	Bituminous Concrete Removal
50102400	1.1	Cu. Yd.	Concrete Removal
*50300225	10.0	Cu. Yd.	Concrete Structures
50500405	3,375	Pound	Furnishing and Erecting Structural Steel
50800205	1.190	Pound	Reinforcement Bars, Epoxy Coated
51500100	1	Each	Name Plates
58100200	66	Sq. Yd.	Waterproofing Membrane System
67100100	1	L. Sum	Mobilization
*70101700	1	L. Sum	Traffic Control and Protection
*X0325305	2.8	Sq. Ft.	Structural Repair of Concrete (Depth Equal to or Less Than 5 inches)
*Z0032400	3	Each	Joint Repair

* See Special Provisions

STANDARDS

- 000001-05 STANDARD SYMBOLS, ABBREVIATIONS AND PATTERNS
- 515001-02 NAME PLATE FOR BRIDGES
- 701901 TRAFFIC CONTROL DEVICES
- 720011 METAL POSTS FOR SIGNS, MARKERS & DELINEATORS
- 728001 TELESCOPING STEEL SIGN SUPPORT
- 729001 APPLICATIONS OF TYPES A & B METAL POSTS (FOR SIGNS & MARKERS)
- BLR-21-7 TYPICAL APPLICATION OF TRAFFIC CONTROL DEVICES FOR CONSTRUCTION ON RURAL LOCAL HIGHWAYS
- BLR-22-5 TYPICAL APPLICATION OF TRAFFIC CONTROL DEVICES FOR CONSTRUCTION ON RURAL LOCAL HIGHWAYS

NET LENGTH 219.58 FT. = 0.042 MILES



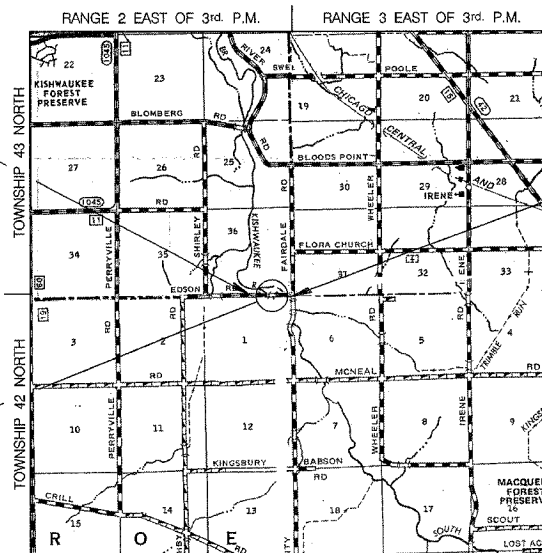
PAVEMENT MIXTURE REQUIREMENTS

LOCATION:	EDSON RD STA 39+90.21 - 42+09.79
MIXTURE USE:	SURFACE
PG:	PG 64-22
DESIGN AIR VCIDS	4%
MIXTURE COMPOSITION (GRADATION MIXTURE)	1L 12.5 - 1L 9.5
FRICTION AGGREGATE	D

Bituminous Materials (Prime Coat) not required.

NAME AND ADDRESS OF UTILITIES	TYPE
NICOR GAS Attn: Scott Puffer 300 West Terra Cotta Crystal Lake, IL 60014 (815) 455-0271	GAS
COMED Attn: Dave Schacht 123 Energy Avenue Rockford, IL 61109 (815) 490-3261	ELECTRIC
VERIZON NORTH, INC. Attn: Garrett Burt 112 West Elm Street Sycamore, IL 60178 (815) 855-1538	TELEPHONE

STRUCTURE REHABILITATION (S.N. 071-3304)
REHABILITATION ONLY.
REPAIR JOINTS, WATERPROOFING MEMBRANE SYSTEM OVER PIERS & AT ABUTMENTS, WIDEN PIER CAPS & ADD POST-TENSIONING RODS, PLACE STONE RIPRAP, CLASS A5 AROUND PIERS.



LOCATION MAP

AGENCY RESPONSIBLE FOR LETTING	
APPROVED	<i>[Signature]</i> 2008 OGLE COUNTY, COUNTY ENGINEER
APPROVED	<i>[Signature]</i> 2008 WINNEBAGO COUNTY, COUNTY ENGINEER
PASSED	<i>[Signature]</i> 2008 DISTRICT 2 ENGINEER OF LOCAL ROADS & STREETS
RELEASING FOR BID BASED ON LIMITED REVIEW	<i>[Signature]</i> 2008 DEPUTY DIRECTOR OF HIGHWAYS, REGION 2 ENGINEER



Plans Prepared By:
Brian K. Converse
DATE: 3/11/2008
EXPIRES 11/30/09

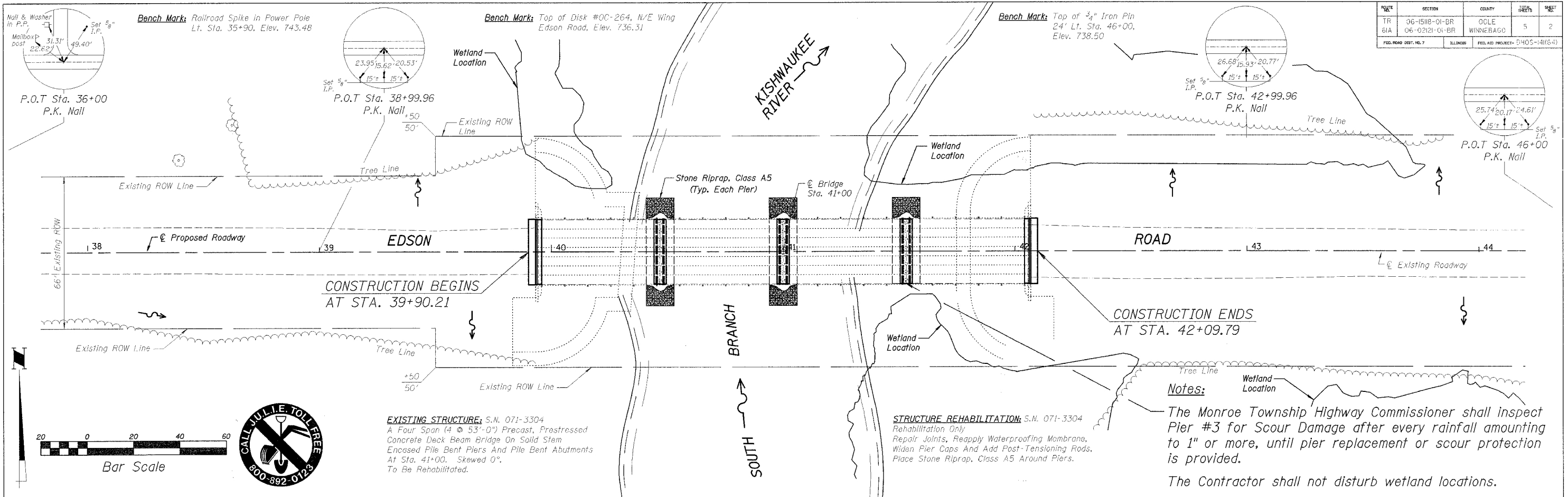
Plans Prepared By:
**WILLETT,
HOFMANN &
ASSOCIATES, INC.**
CONSULTING ENGINEERS
Land Surveying - Transportation - Structural
Environmental - Architecture
800 East Second Street Dixon, Illinois 61021
Phone 815-294-3391 Fax 815-294-5355
Design Firm #184-000918
www.willett-hofmann.com

WHA # 1092D06

HIGHWAY CLASSIFICATION: LOCAL ROAD (NON-URBAN)
DESIGN SPEED: 30 MPH
ADT = 125
3R GUIDELINES



TR	SECTION	COUNTY	SHEETS	SHEET
61A	06-02121-01-BR	OCLE WINNEBAGO	5	2
FED. ROAD DIST. NO. 7		ILLINOIS	FED. AID PROJECT: 1405-H(164)	

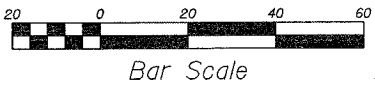


Notes:
 The Monroe Township Highway Commissioner shall inspect Pier #3 for Scour Damage after every rainfall amounting to 1" or more, until pier replacement or scour protection is provided.
 The Contractor shall not disturb wetland locations.

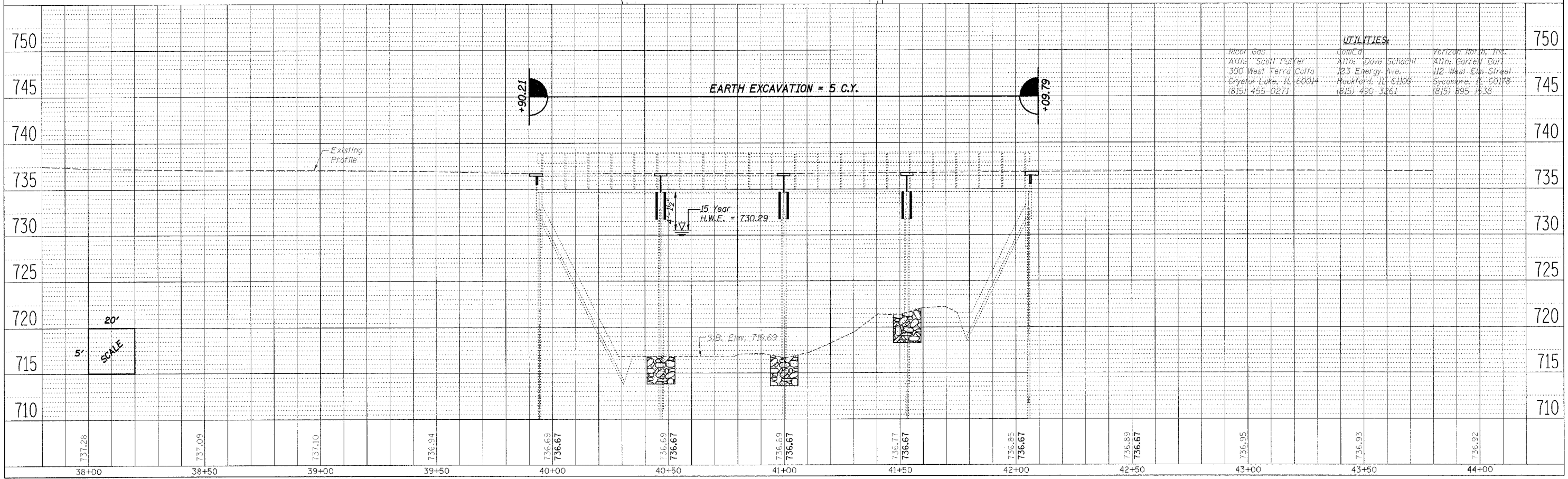
EXISTING STRUCTURE: S.N. 071-3304
 A Four Span (4 @ 53'-0") Precast, Prestressed Concrete Deck Beam Bridge On Solid Stem Encased Pile Bent Piers And Pile Bent Abutments At Sta. 41+00. Skewed 0°. To Be Rehabilitated.

STRUCTURE REHABILITATION: S.N. 071-3304
 Rehabilitation Only
 Repair Joints, Reapply Waterproofing Membrane, Widen Pier Caps And Add Post-Tensioning Rods. Place Stone Riprap, Class A5 Around Piers.

DATE	
BY	
REVIEWED	
PLANNED	
NOTED	
NO. 1	
NO. 2	
NO. 3	
NO. 4	
NO. 5	
NO. 6	
NO. 7	
NO. 8	
NO. 9	
NO. 10	



DATE	
BY	
REVIEWED	
PLANNED	
NOTED	
NO. 1	
NO. 2	
NO. 3	
NO. 4	
NO. 5	
NO. 6	
NO. 7	
NO. 8	
NO. 9	
NO. 10	



EDSON ROAD (TR 61A) - PLAN & PROFILE

S:\Struct\1092006EdsonRoad\ppEDSON1.dgn

EXISTING STRUCTURE: S.N. 071-3304

A Four Span (4x53') Precast Prestressed Concrete Deck Beams on Solid Stem Encased Pile Bent Piers and Pile Bent Abutments At Sta. 41+00, Skewed 0°, To Be Rehabilitated.
 Section 89-15118-00-BR (Ogle County)
 Section 89-02121-00-BR (Winnebago County)

Bench Mark: Railroad Spike in Power Pole

Lt. Sta. 35+90
 Elev. 743.48

Bench Mark: Top of Disk #0C-264

Northeast Wingwall
 Elev. 736.31

Bench Mark: Top of 3/4" I.P.

24' Lt. Sta. 46+00
 Elev. 738.50

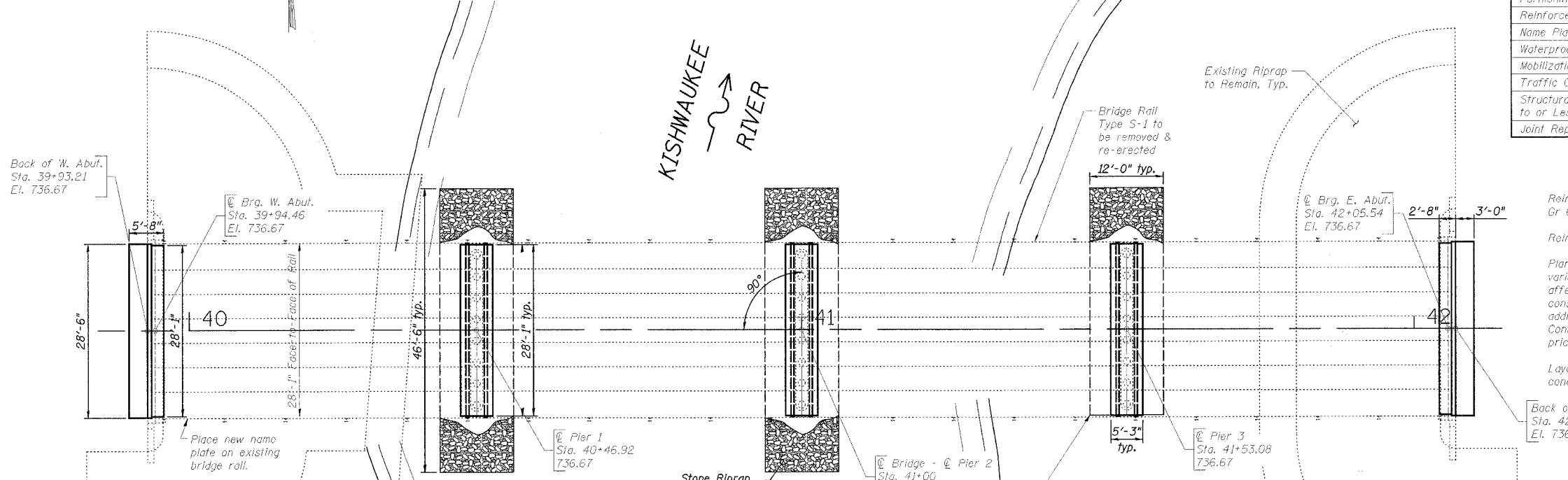
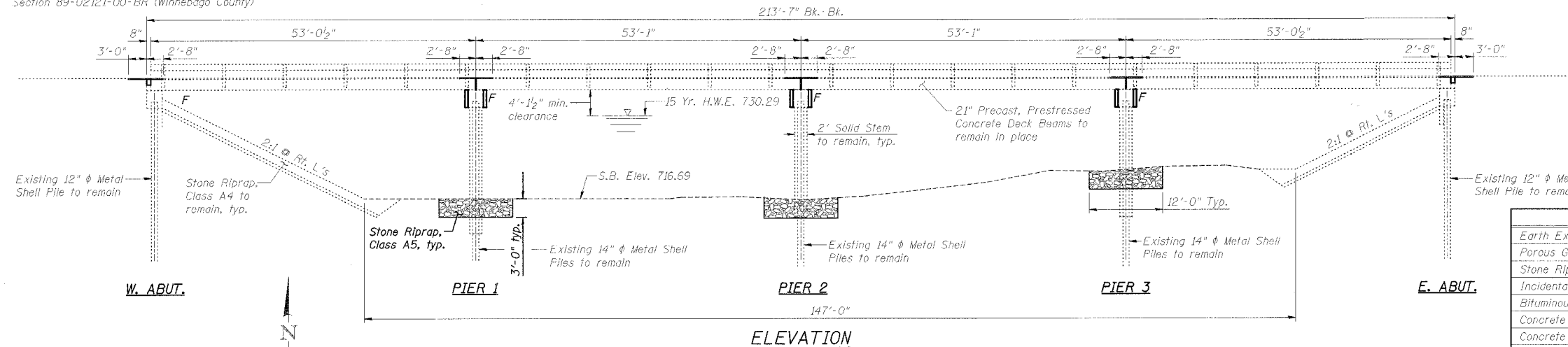
ROUTE	SECTION	COUNTY	DATE	SHEET
TR 61A	06-15118-01-BR 06-02121-01-BR	OGLE WINNEBAGO	5	3
FED. ROAD DIST. NO. 7		ILLINOIS	FED. AID PROJECT: BHOS-14(16.4)	

SOUTH BRANCH KISHWAUKEE RIVER
 REHABILITATION 2008 BY
 SECTION 06-15118-01-BR (OGLE CO.)
 SECTION 06-02121-01-BR (WINNEBAGO CO.)
 TR 61A STA. 41+00
 F.A. PROJ. BHOS-14(16.4)
 STR. NO. 071-3304 LOADING HS20

NAME PLATE LETTERING
 Refer to Std. 515001

BILL OF MATERIALS - BRIDGE

Item	Unit	Sub.	Super.	Total
Earth Excavation	Cu. Yd.	---	5	5
Porous Granular Embankment	Cu. Yd.	---	3	3
Stone Riprap, Class A5	Sq. Yd.	156	---	156
Incidental Hot-Mix Asphalt Surfacing	Ton	---	21	21
Bituminous Concrete Removal	Sq. Yd.	---	66	66
Concrete Removal	Cu. Yd.	1.1	---	1.1
Concrete Structures	Cu. Yd.	10.0	---	10.0
Furnishing and Erecting Structural Steel	L. Sum	1	---	1
Reinforcement Bars, Epoxy Coated	Pound	1,190	---	1,190
Name Plates	Each	---	1	1
Waterproofing Membrane System	Sq. Yd.	---	66	66
Mobilization	L. Sum	---	---	1
Traffic Control and Protection	L. Sum	---	---	1
Structural Repair of Concrete (Depth Equal to or Less Than 5 inches)	Sq. Ft.	2.8	---	2.8
Joint Repair	Each	---	3	3



GENERAL NOTES:

Reinforcement bars shall conform to the requirements of ASTM A 706 Gr 60 (IL Modified). See Special Provisions.
 Reinforcement bars designated (E) shall be epoxy coated.
 Plan dimensions and details relative to existing plans are subject to routine variations. The Contractor shall field verify existing dimensions and details affecting new construction and make necessary approved adjustments prior to construction or ordering of materials. Such variations shall not be cause for additional compensation for a change in scope of the work, however, the Contractor will be paid for the quantity actually furnished based upon the unit price bid for the work.
 Layout of slope protection system may be varied in the field to suit ground conditions as directed by the Engineer.

WATERWAY INFORMATION

DRAINAGE AREA	414 Sq. Mi.
DESIGN DISCHARGE (15 YR.)	9,500 C.F.S.
EXISTING OPENING	1,400 Sq. Ft.
REQUIRED OPENING	1,870 Sq. Ft.
PROPOSED OPENING	1,870 Sq. Ft.
CREATED HEAD (15 YR.)	< 0.5'
100 YR. DISCHARGE	15,300 C.F.S.
CREATED HEAD (100 YR.)	< 1.0'
HIGH WATER ELEV. (100 YR.)	733.09 Ft.

DESIGN SPECIFICATIONS

Design In Accordance With 2002 A.A.S.H.T.O. Standard Specifications - 17th Edition

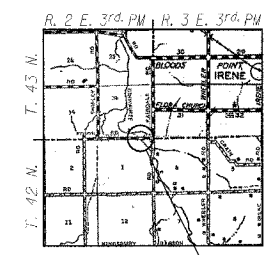
DESIGN STRESSES

FIELD UNITS
 $f_c = 3,500$ psi
 $f_y = 60,000$ psi (Reinforcement)



Brian K. Converse
 DATE: 3/11/2008
 EXPIRES 11/30/08

"I CERTIFY THAT TO THE BEST OF MY KNOWLEDGE, INFORMATION AND BELIEF, THIS BRIDGE DESIGN IS STRUCTURALLY ADEQUATE FOR THE DESIGN LOADINGS SHOWN ON THE PLANS, THE DESIGN IS AN ECONOMICAL ONE FOR THE STYLE OF STRUCTURE AND COMPLIES WITH REQUIREMENTS OF THE CURRENT 'AASHTO STANDARD SPECIFICATIONS FOR HIGHWAY BRIDGES'."



Bridge Site
LOCATION SKETCH

GENERAL PLAN AND ELEVATION
EDSON ROAD (TR 61A) OVER
SOUTH BRANCH KISHWAUKEE RIVER
STA. 41+00 (S.N. 071-3304)
SECTION 06-15118-01-BR
MONROE ROAD DISTRICT
OGLE COUNTY
SECTION 06-02121-01-BR
CHERRY VALLEY ROAD DISTRICT
WINNEBAGO COUNTY



800 East Second Street, Dixon, Illinois 61021
 Phone 815.284.3381 Fax 815.284.3385
 Design Firm #164-000918
 www.willett-hofmann.com

Designed By: M. A. Small
 Date: 4/07
 Checked By: B. K. Converse
 Date: 4/07
 Drawn By: F. D. Lachat
 Date: 4/07

WHA # 1092D06

