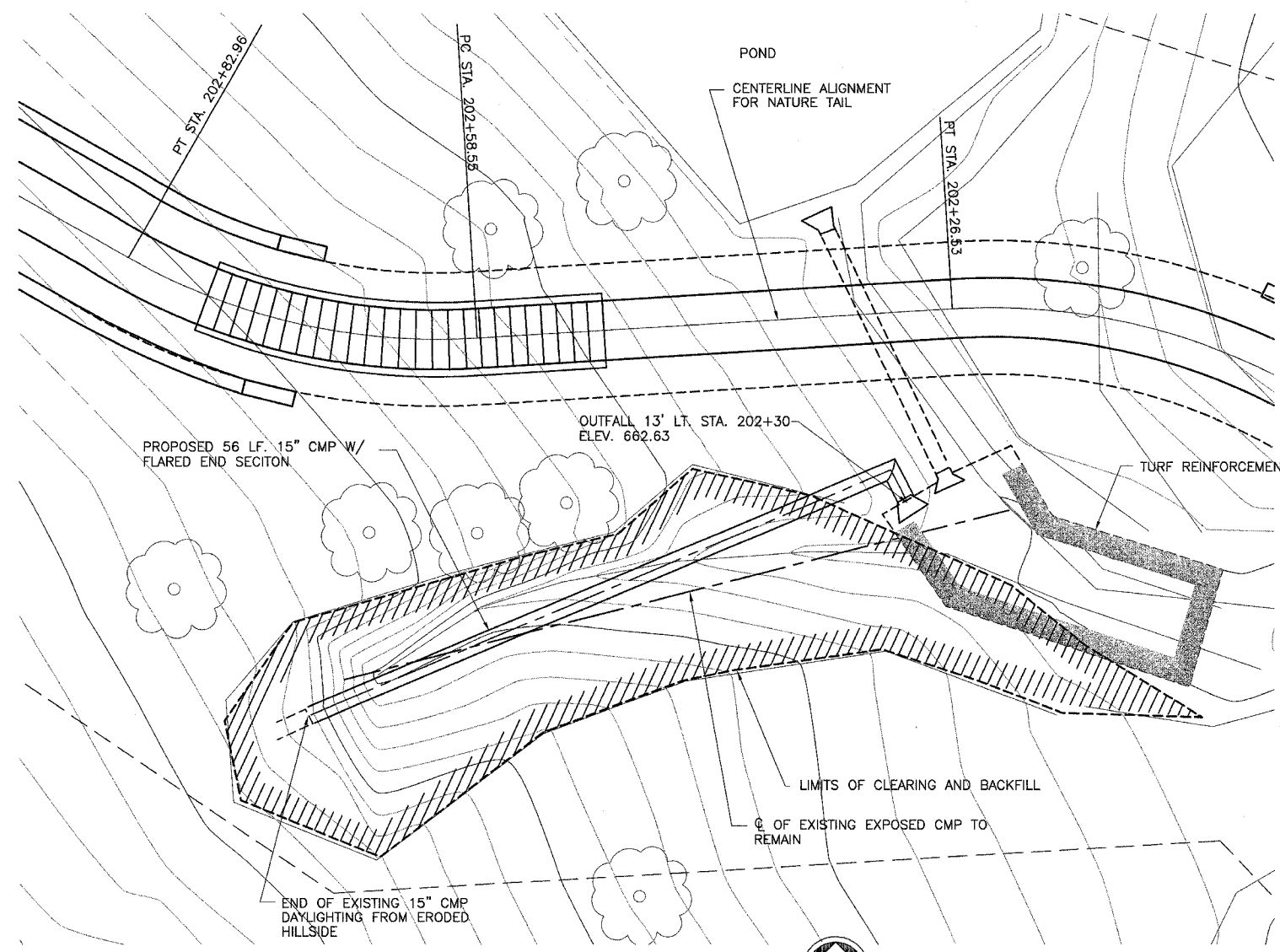


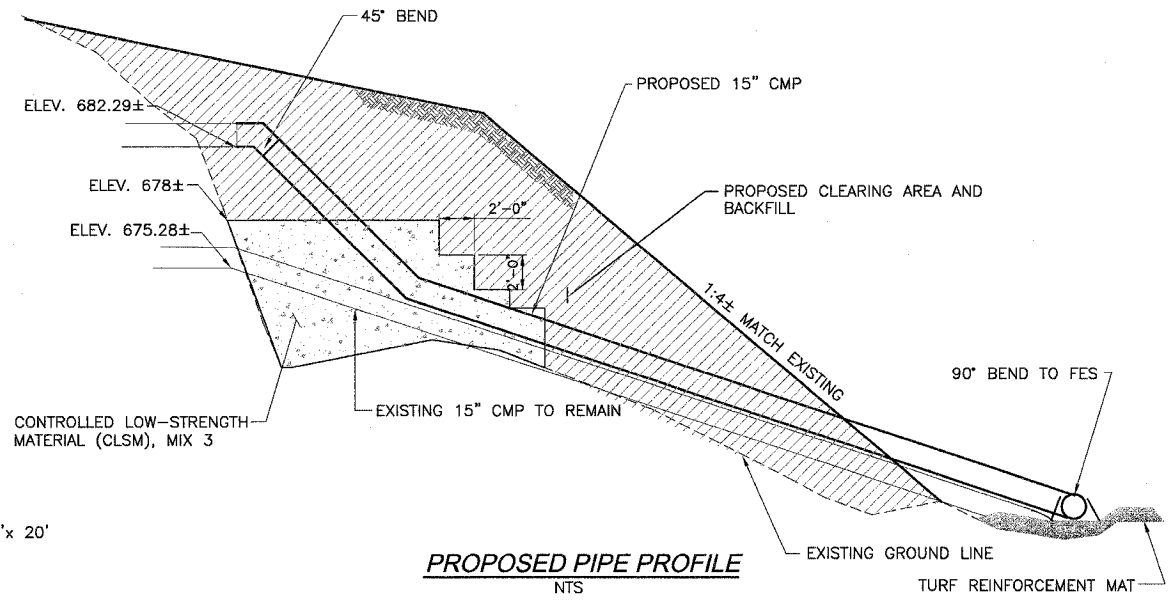
STATE OF ILLINOIS
DEPARTMENT OF TRANSPORTATION

ROUTE NO.	SECTION	COUNTY	TOTAL SHEETS	SHEET NO.
	*	ROCK ISLAND	112	40
FED. ROAD DIST. NO. 7		ILLINOIS	FED. AID PROJECT-	

* 05-00174-00-BT



PLAN
NTS



PROPOSED PIPE PROFILE
NTS

GENERAL NOTES:

- REMOVE WOODY / ORGANIC DEBRIS FROM ERODED TRENCH UNDER EXISTING CMP
- CONNECT 15" CMP ELBOW TO EXISTING DAYLIGHTED CMP AND INSTALL NEW 15" CMP AS SHOWN IN PROFILE
- STABILIZE PIPE INSTALLATION AND BACKFILL WITH CONTROLLED LOW-STRENGTH MATERIAL (CLSM) MIX 3, PER SECTION 1019 IN THE STANDARD SPEC. IL.D.O.T, TO APPROXIMATE ELEVATION SHOWN
- BACKFILL WITH SOIL MATERIAL COMPACTED TO 90% STD PROCTOR TO APPROXIMATE PROFILE

DESIGNED	MHM
CHECKED	JBF
DRAWN	RAP
CHECKED	JBF