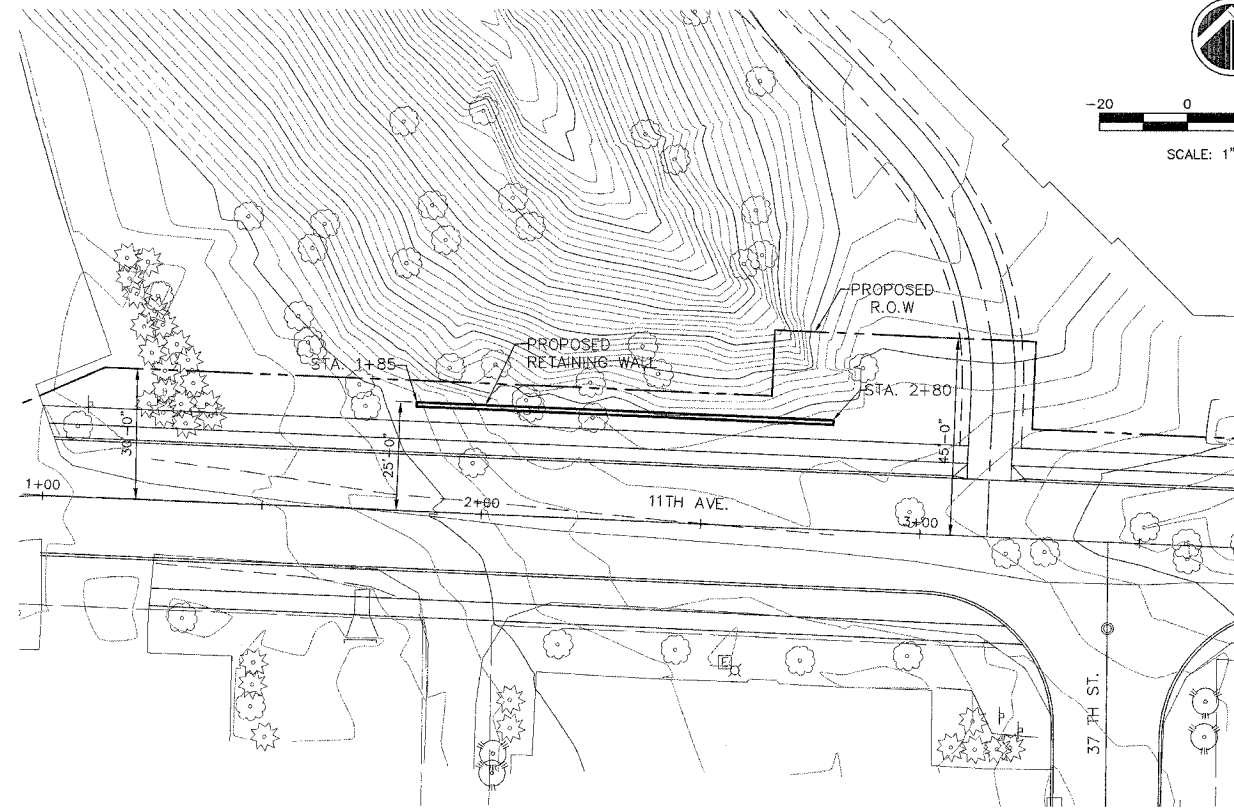
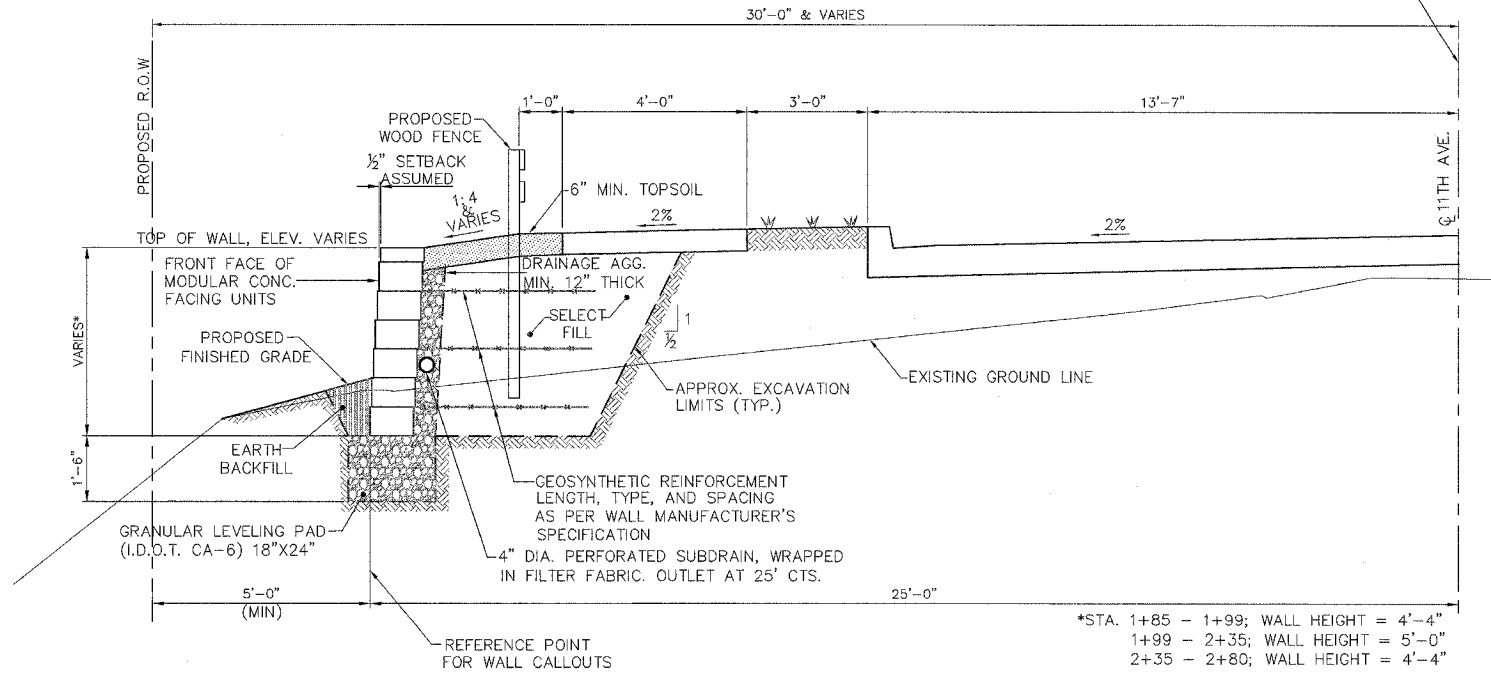
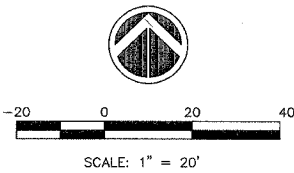


Route No.	SECTION	COUNTY	TOTAL SHEETS	SHEET NO.
05-00174-00-BT		Rock Island	112	52
Sta.	To Sta.			
FED. ROAD DIST. NO. 7	ILLINOIS			



PLAN-RETAINING WALL
SCALE 1" = 20'



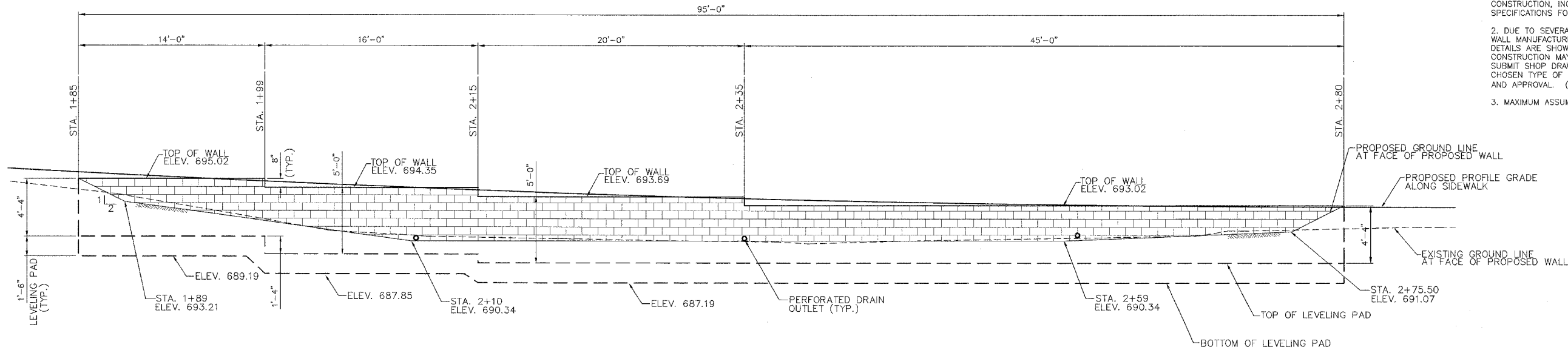
SECTION-RETAINING WALL
SCALE 1/4" = 1'-0"

*STA. 1+85 - 1+99; WALL HEIGHT = 4'-4"
1+99 - 2+35; WALL HEIGHT = 5'-0"
2+35 - 2+80; WALL HEIGHT = 4'-4"

BILL OF MATERIAL

SEGMENTAL CONCRETE BLOCK WALL	SQ.FT.	436
-------------------------------	--------	-----

- GENERAL NOTES:**
1. THE CONTRACTOR SHALL COMPLY WITH THE ILLINOIS DEPARTMENT OF TRANSPORTATION (I.D.O.T.), 2007 STANDARD SPECIFICATIONS FOR ROAD AND BRIDGE CONSTRUCTION, INCLUDING ALL SUPPLEMENTAL SPECIFICATIONS FOR THIS PROJECT.
 2. DUE TO SEVERAL ACCEPTABLE SEGMENTAL BLOCK WALL MANUFACTURERS AVAILABLE, GENERAL WALL DETAILS ARE SHOWN ON THE PLANS. BEFORE CONSTRUCTION MAY BEGIN, THE CONTRACTOR SHALL SUBMIT SHOP DRAWINGS AND CALCULATIONS FOR CHOSEN TYPE OF WALL TO THE ENGINEER FOR REVIEW AND APPROVAL. (SEE SPECIAL PROVISIONS).
 3. MAXIMUM ASSUMED BEARING CAPACITY = 2,500 psf.



ELEVATION-RETAINING WALL
SCALE 1/4" = 1'-0"

DESIGNED	MHM
CHECKED	JBF
DRAWN	RAP
CHECKED	JBF

RETAINING WALL