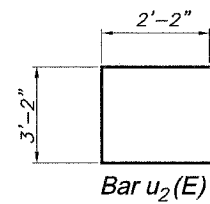
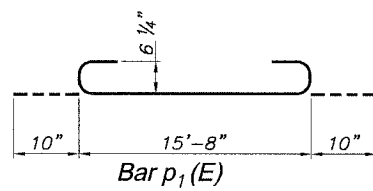
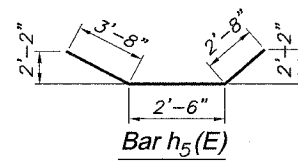
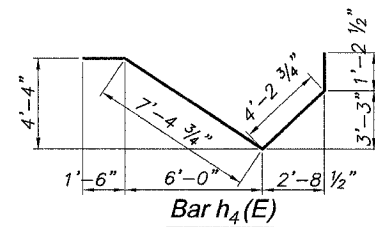
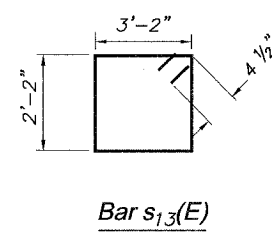
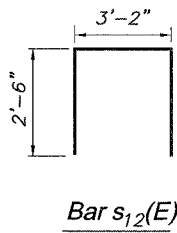
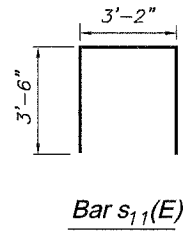
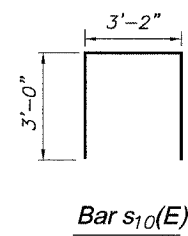
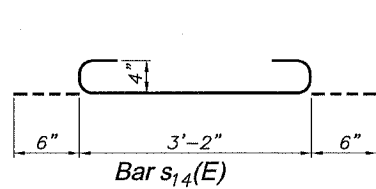
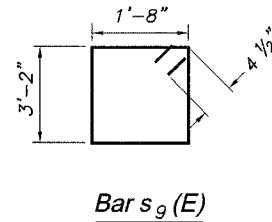
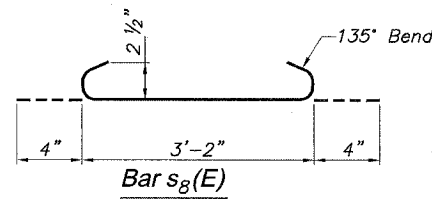
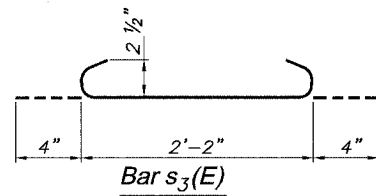
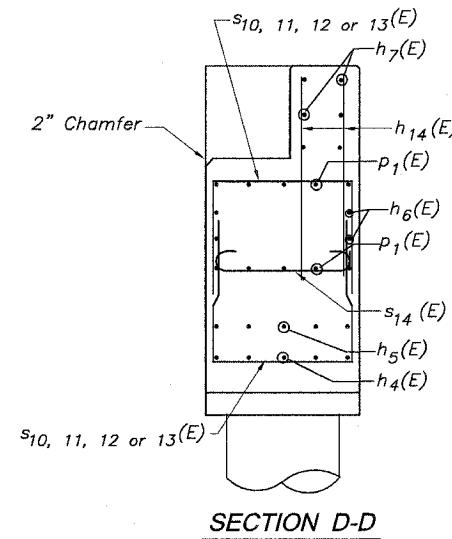
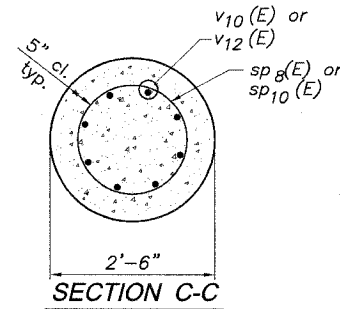
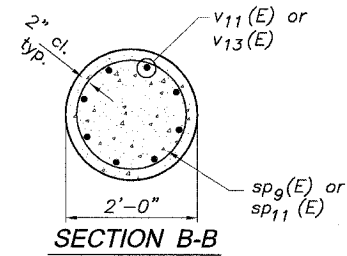
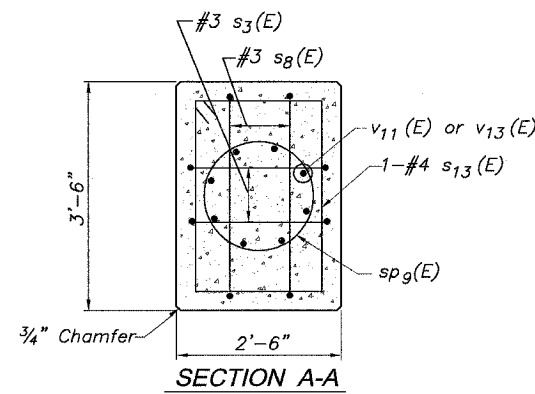


STATE OF ILLINOIS
DEPARTMENT OF TRANSPORTATION

ROUTE NO.	SECTION	COUNTY	TOTAL SHEETS	SHEET NO.
	*	ROCK ISLAND	112	69
FED. ROAD DIST. NO. 7		ILLINOIS	FED. AID PROJECT-	

SHEET NO. 16
19 SHEETS

* 05-00174-00-BT



DESIGNED	LRT
CHECKED	JBF
DRAWN	RAP
CHECKED	JBF

Bar	No.	Size	Length	Shape
h4(E)	10	#6	14'-4"	U
h5(E)	10	#6	8'-10"	U
h6(E)	4	#6	15'-8"	U
h7(E)	6	#5	15'-8"	U
p1(E)	10	#7	17'-4"	U
s3(E)	4	#3	2'-10"	U
s8(E)	4	#3	3'-10"	U
s9(E)	6	#4	10'-5"	U
s10(E)	8	#4	9'-2"	U
s11(E)	8	#4	10'-2"	U
s12(E)	8	#4	8'-2"	U
s13(E)	4	#4	11'-5"	U
s14(E)	10	#4	4'-2"	U
sp8(E)	1	#3	32'-7"	W
sp9(E)	1	#3	6'-5"	W
sp10(E)	1	#3	36'-1"	W
sp11(E)	1	#3	2'-11"	W
u2(E)	8	#4	7'-6"	U
v10(E)	8	#9	32'-7"	U
v11(E)	8	#9	10'-4"	U
v12(E)	8	#9	36'-1"	U
v13(E)	8	#9	6'-10"	U
v14(E)	42	#5	4'-6"	U
v2(E)	16	#9	8'-0"	U
Structure Excavation		Cu.Yd.	13.6	
Concrete Structures		Cu.Yd.	11.2	
Reinforcement Bars Epoxy Coated		Pound	4,500	
Drilled Shafts in Soil		Cu.Yd.	12.6	

Reinf. bars designated (E) shall be Epoxy coated.

PIER #5 REINF. DETAILS
AUGUSTANA COLLEGE MULTI-USE BRIDGE
SECTION 05-00174-00-BT
PROJECT NO. HPP-4113-(001)
CITY OF ROCK ISLAND
ROCK ISLAND COUNTY